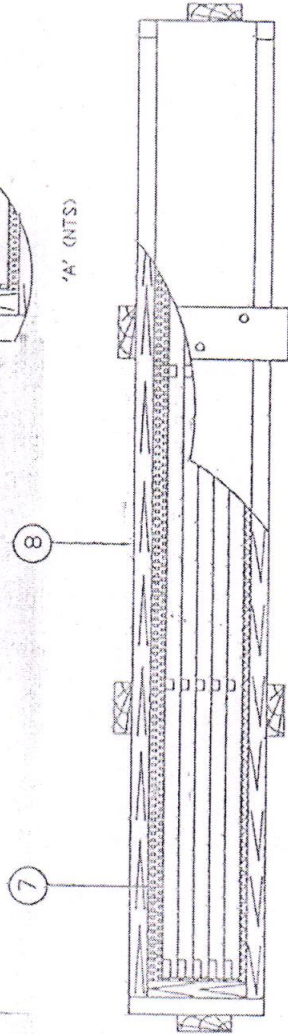
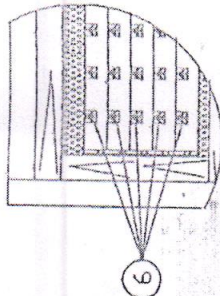


DRAWING CONVENTIONS CONFORM TO ISPEC-CATION

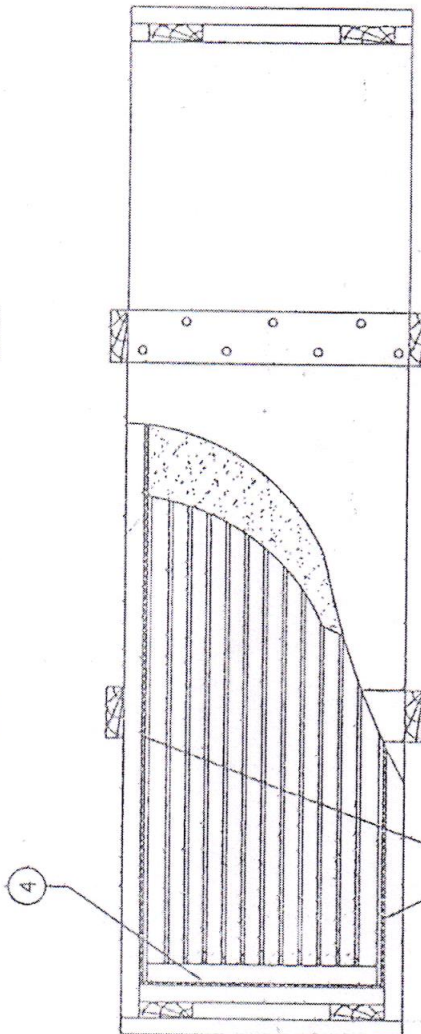
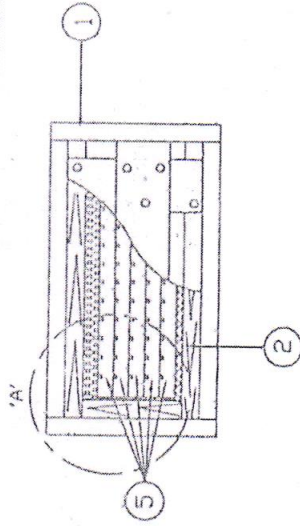
ON 100% DIMSCALE IN MM

LIST OF COMPONENTS

S.No.	DESCRIPTION	DRGNO.	DET.No.	QTY
1	BOX FOR FLSC 49/m, 12 Ø/m & 25Ø/m (EMPTY)	HEMRL DRG. HE/CAST 081	1	1
2	BOTTOM PACKING SHEET	HEMRL DRG. HE/CAST 081	2	1
3	FRONT & REAR PACKING SHEET	HEMRL DRG. HE/CAST 081	3	2
4	SIDE PACKING SHEET	HEMRL DRG. HE/CAST 081	4	2
5	FLSC 49/m HOLDING TRAY (SUBASST)	HEMRL DRG. HE/CAST 081	5	5
6	FLSC 49/m	HEMRL DRG. HE/CAST 050	-	55
7	TOP PACKING SHEET	HEMRL DRG. HE/CAST 081	8	1
8	LID	HEMRL DRG. HE/CAST 081	9	1



'A' (NTS)



SEALING NOTE :

AFTER PACKING, THE CATCHES ARE TO BE SECURED AS SHOWN WITH WIRE STEEL SOFT GALVANISED Ø10 OR Ø1.25X160L CONFORMING TO SPEC IS:280-1978 TO BE PASSED THROUGH HOLES IN THE ENDS OF THE WIRE SHOULD BE TWISTED & SEALED WITH LEAD SEAL 10mm WHICH IS STAMPED WITH INSPECTOR MONOGRAM, THE ENDS OF THE WIRE TO BE LEFT LONG ENOUGH TO ENABLE UNTWISTING BY HAND

TECHNICAL REQUIREMENT: AS PER SPEC IA948 (Gd)

FOR METHOD OF STENCILLING SEE HEMRL DRG HE/CAST 081, SHT 2

DRN. ALS	ICHD	TR	LEAD	ASSY.DRG
CD.	PASSED	SCALE	DESIGN AUTHORITY	
APPROVED	SCALE	SCALE	HEMRL PUNE-411021	
C.D. G.D	SCALE	SCALE		
MAT'L REF	COMPONENT DRG			
DATE AUTHORITY	BRIEF RECORD	ZONE	SIGN	
DRG SEALED				

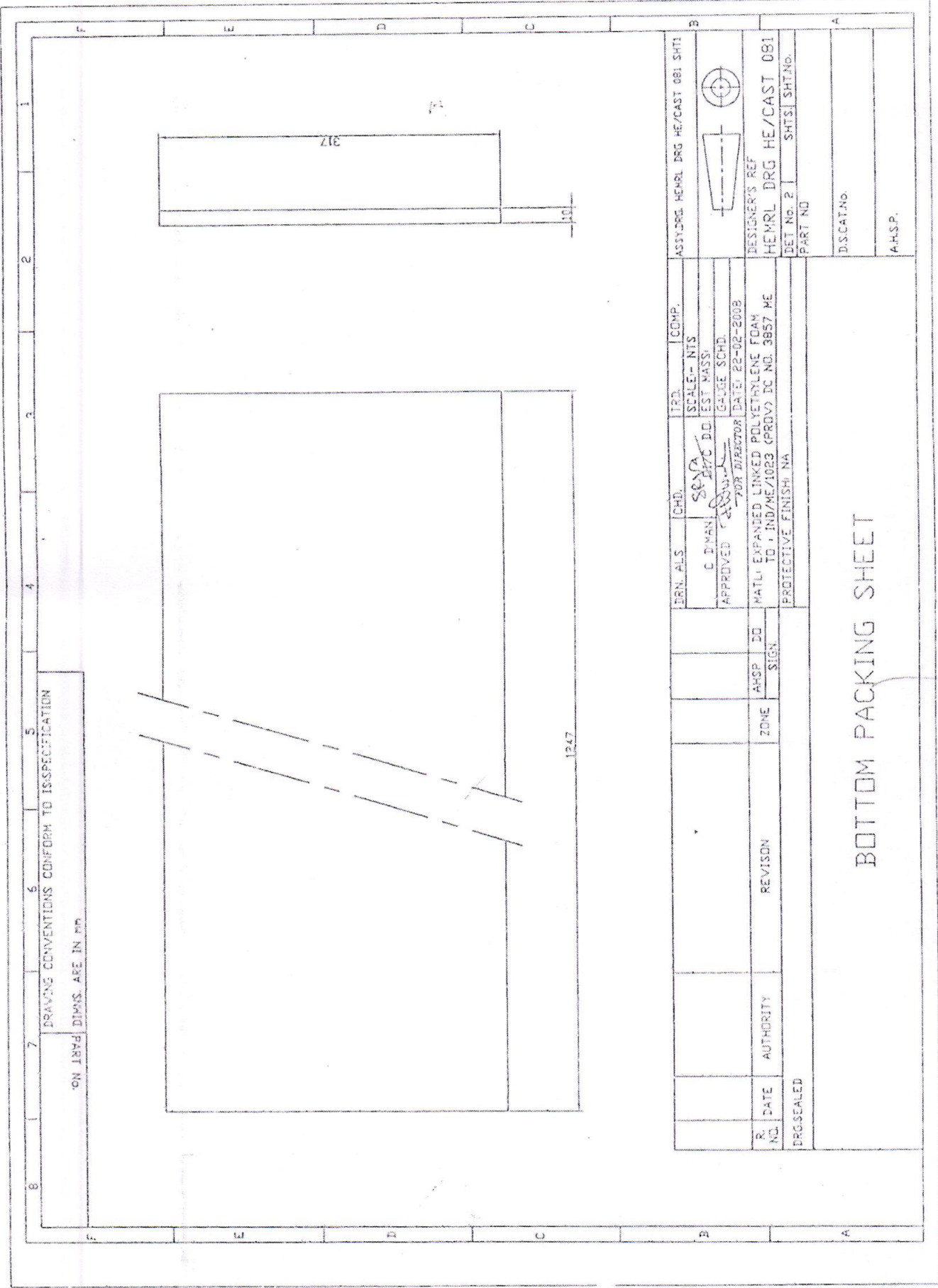
DRGNO. HEMRL DRG. HE/CAST 081
 PART NO. B. SHS. SHI001
 DSCATNO.
 AHP.P.

METHOD OF PACKING FOR :

BOX FOR FLSC 49/m (FILLED)

OF BA/CX/151

CFBA/CX/154
47

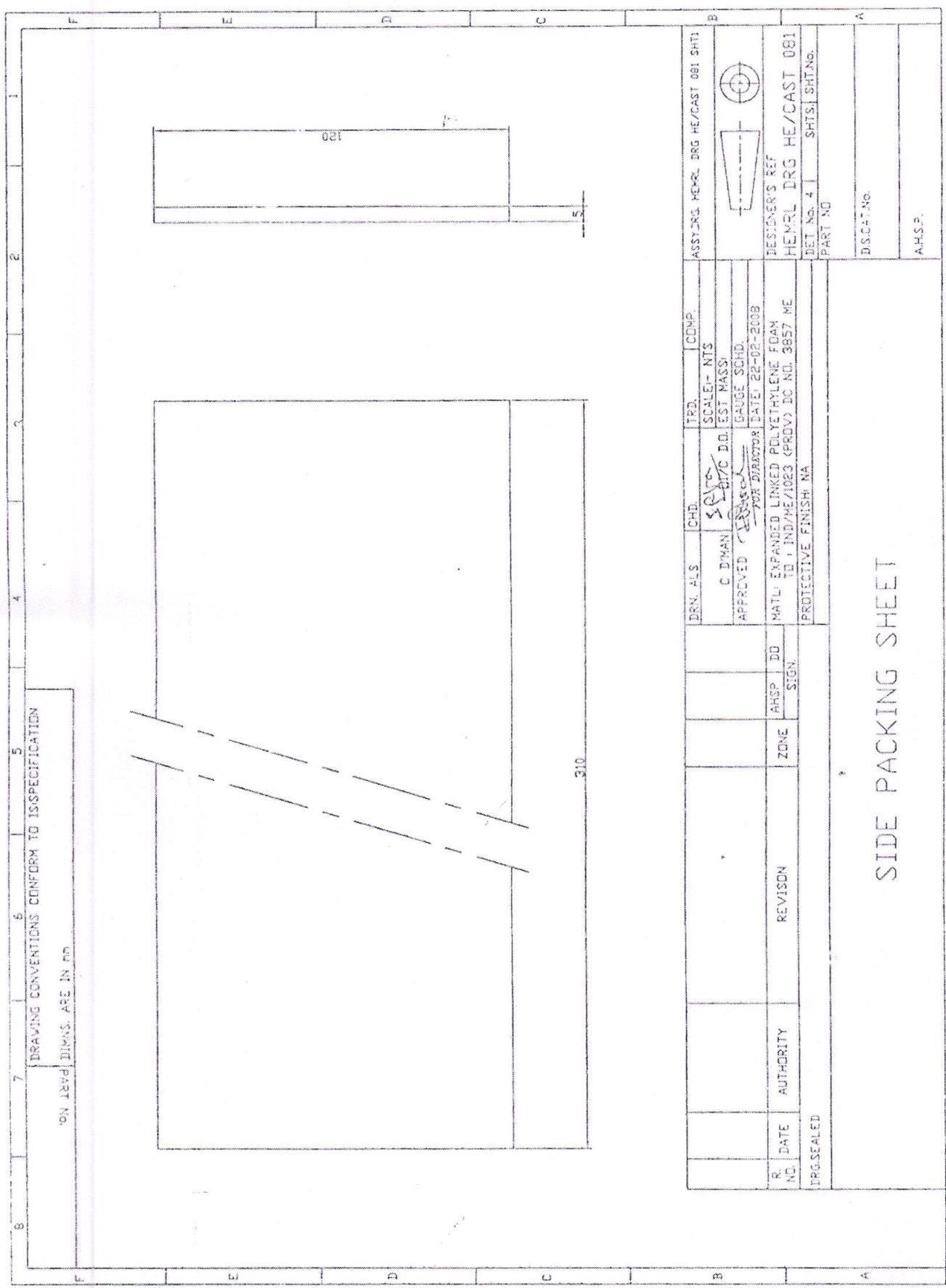


ON 1894 DIMS. ARE IN MM
DRAWING CONVENTIONS CONFORM TO ISSPECIFICATION

DESIGNER'S REF HEMRL DRG HE/CAST 081	DET No. 2	SHTS/ SHT.ND.	
PART NO			
D.SCAT.No.			
A.H.S.P.			
IRN. ALS.	CHD.	TRD.	COMP.
C. DIMAN	SCALE- INTS	EST. MASS.	
APPROVED	G.A.U.C. DO	G.A.U.C. SCHED.	
FOR DIRECTOR DATE: 22-02-2008			
R. DATE	AHSP DO	ZONE	REVISION
NO.	SIGN		
DRG. SEALED			
PROTECTIVE FINISH: NA			
MATERIAL: EXPANDED LINKED POLYETHYLENE FOAM			
ID: IND/ME/1023 (PROV) IC NO. 3957 ME			

BOTTOM PACKING SHEET

49
 CR-BA/CX/14C



DRAWING CONVENTIONS CONFORM TO ISSPECIFICATION
 DIMAS. ARE IN mm

DRN. ALS	CHD.	TRD.	CDMP.	ASST. DRG. HE/REL. DRG. HE/CAST 081 SHT1
C DIMAN	SCA	SCALE- NTS		
APPROVED	EST MASSI	GAGE. SCHD.		
	FOR DIAPYTORI	DATE: 22-02-2008		
R. DATE	AHSP DD	MATL: EXPANDED LINKED POLYETHYLENE FOAM	DESIGNER'S REF	HEMRL DRG HE/CAST 081
	ZONE	TO: IND/HE/10E3 (PROV) DC NO. 3857 ME	DET No. 4	SHTS: SHTNO.
	REVISION	PROTECTIVE FINISH: NA	PART NO	
	AUTHORITY		D.SCHT. NO.	
			A.H.S.P.	

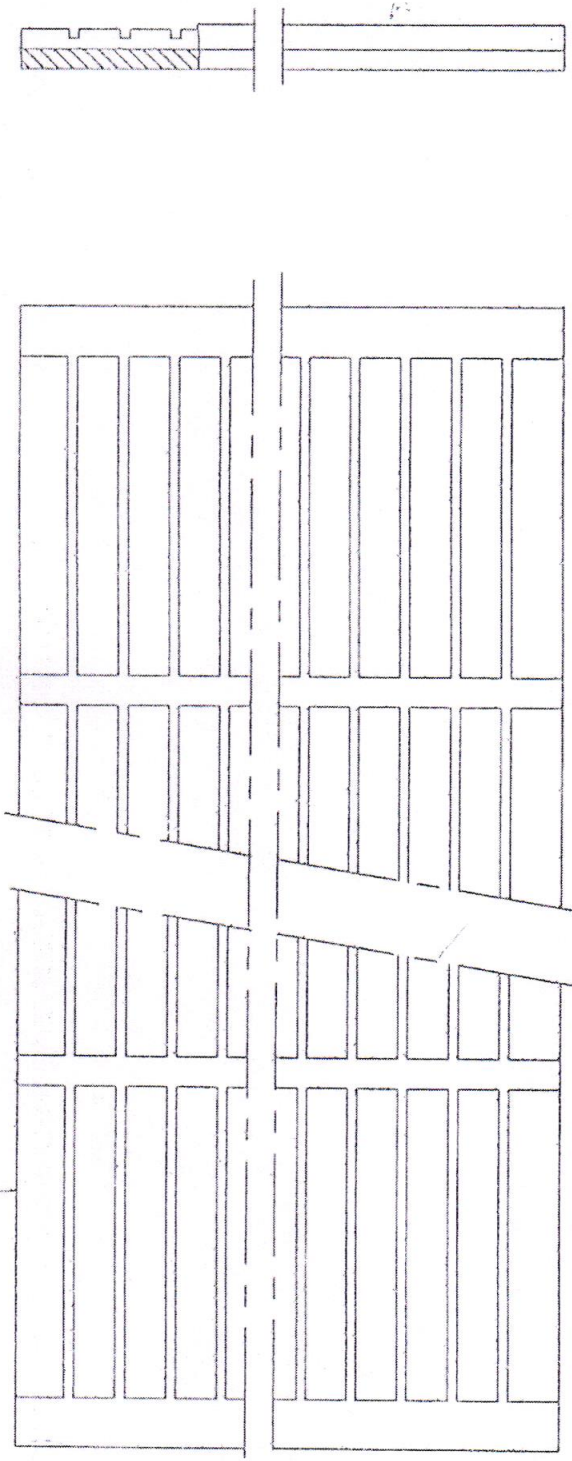
SIDE PACKING SHEET

LIST OF COMPONENTS

S.No.	DESCRIPTION	DRG.No.	DET.No.	No.DFF
1	FLSC 49/m HOLDING TRAY	HEMRL DRG HE/CAST 081	6	1
2	SIDE SUPPORT STRIP	HEMRL DRG HE/CAST 081	7	2

DRAWING CONVENTIONS CONFORM TO ISSPECIFICATION

ALL DIMS ARE IN MM



NOTE

ITEM NO 2 TO BE PASTED TO ITEM NO 1 BY USING FEVICOL SR 998 OR SUITABLE ADHESIVE MATERIAL

DRN. ALS	CHD.	TRD.	COMP.
C D'WAN	SPVA	SCALE:- NTS	ASSY.DRG. HEMRL DRG HE/CAST 081 SHT1
APPROVED	BY C D'WAN	EST MASS	
	FOR DIRECTOR	GAUGE SCHD.	
		DATE: 03-03-2008	
R. DATE	AUTHORITY	REVISION	DESIGNER'S REF
			HEMRL DRG HE/CAST 081
DRG-SEALED			DET No. 5
			SHTS: SHT.No.
			PART NO
			DISCAT.No.
			A.H.S.P.

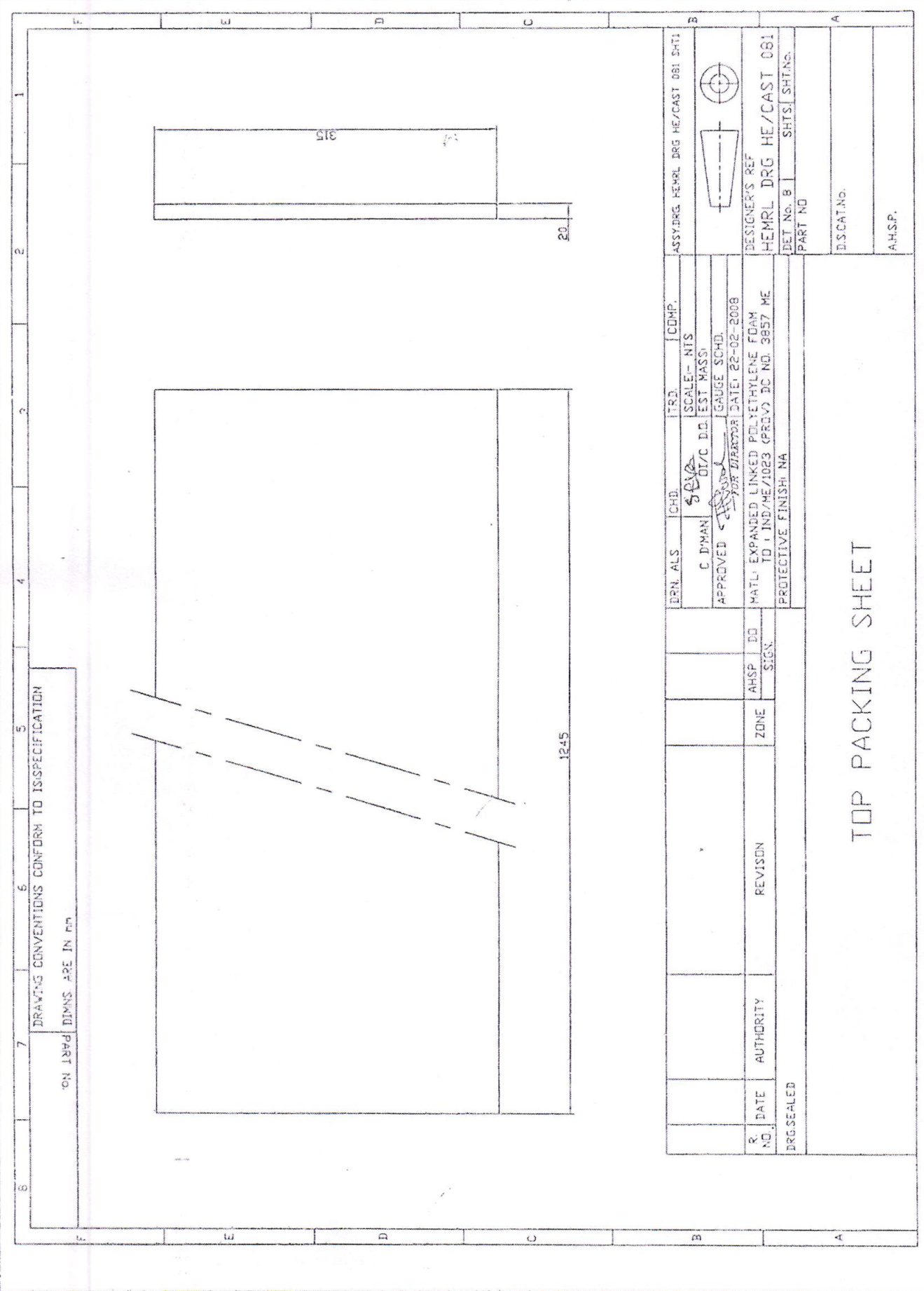
FLSC 49/m HOLDING TRAY (SUBASSY)

50 0182/01/17

4	3	2	1				
PART No.		DRG. CONVENTIONS CONFORM TO IS: SPECIFICATIONS.					
		DIMENSIONS ARE IN mm.					
F							
E							
D							
C							
B							
R.No.	DATE	AUTHORITY	REVISION		ZONE	AHSP	D.O.
						SIG.	
DRG. SEALED:-							
DRN. ALS	CHD.	TRD.	COMP.	ASSY. DRG. HEMRL DRG HE/CAST 081/5,082/1			
C.D'MAN	<i>S.P.V.S</i> O/C D.O.	SCALE:- 1 : 2.5					
APPD.	<i>[Signature]</i> FOR DIRECTOR	EST.MASS:-					
		GAUGE SCHD:-					
		DATE:-03-03-2008					
MATL: EXPANDED LINKED POLYETHYLENE FOAM				DESIGNER'S REF.			
TD : IND/ME/1023 (PROV) DC NO. 3857 ME				HEMRL DRG HE/CAST 081			
PROTECTIVE FINISH:- NA				DET NO 7	SHTS.	SHT.NO.	
SIDE SUPPORT STRIP				PART No.			
				D.S.CAT No.			
				AHSP:-			

OFBA/CX/159
52

DFBA/CX/150
53



7 DRAWING CONVENTIONS CONFORM TO ISSPECIFICATION
PART NO. DIMS ARE IN IN

DRN. ALS	CHD.	TRD.	COMP.	ASSY.DRG. HEMRL DRG HE/CAST 081 SHT1
C. DIMAN	SCALE - NTS	DIVC D.D. EST MASS		
APPROVED	GAGE SCHED.	708 D/BA0001 DATE: 22-02-2008		
R. NO.	DATE	AUTHORITY	REVISION	ZONE
DRG. SEALED				
DESIGNER'S REF HEMRL DRG HE/CAST 081				
DET. No. B SHTS. SHT. No.				
PART NO				
D.S.CAT.No.				
A.H.S.P.				

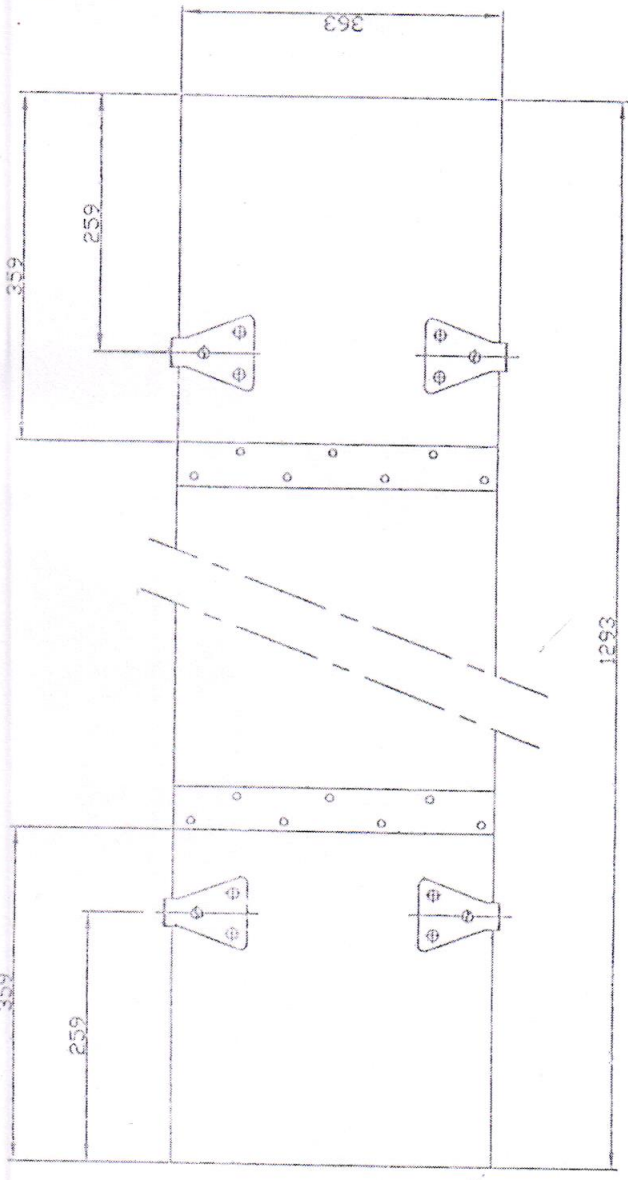
TOP PACKING SHEET

ON 1874 DIMS. ARE IN mm

DRAWING CONVENTIONS REFER TO IS SPECIFICATION

PLATE HOOK- 4NDS
 DRG NO JA-1053 SHT 5 (PART NO ISV 286)
 SECURED TO LID BY 2-M S RIVETS FLAT HD
 Ø4.76X20L TO IS: 2155 & BY 1 C/SK HD
 WOOD SCREW NO 7X12L TO IS: 6760-1972 OR
 ANY EQUIVALENT APPROVED LOCKING SYSTEM

2-BATTONS 363LX70WX23THK
 ARE TO BE SECURED WITH NAILS
 OF MS WIRE PLAIN HD Ø2.5X50L
 TO IS: 723 AND CLINCHED



ALL SCREWS, NAILS & RIVETS SHOULD BE
 GALVANISED
 NAILS TO BE ROUND, WIRE, MS PLAIN HD
 TO SPEC IS: 723-1972

TECHNICAL REQUIREMENT: AS PER SPEC IA948 (cod)

ERN. ALS	CHD.	TRD.	COMP.	ASSY. DRG. HEMRL DRG HE/CAST 081 SHT 1
C DIMAN	SC/MS DI/C D.O.	SCALE- 1:5	TEST MASS.	
APPROVED	APPROVED	Gauge	SCHD.	
	FOR DIRECTOR	DATE: 03-03-2008		
8	DATE	AUTHORITY	REVISION	ZONE
DRG SEALED				
MATERIAL DEPARTMENT/CHIEF TO SPEC. IND./ME/S33 (F) PROV PROTECTIVE FINISH: NA				
DESIGNER'S REF HEMRL DRG HE/CAST 081				
DET No. 9 SHTS. SHT. NO.				
PART NO.				
D.S. CAT. NO.				
A.H.S.P.				

LID

54 OFBA/CX/151