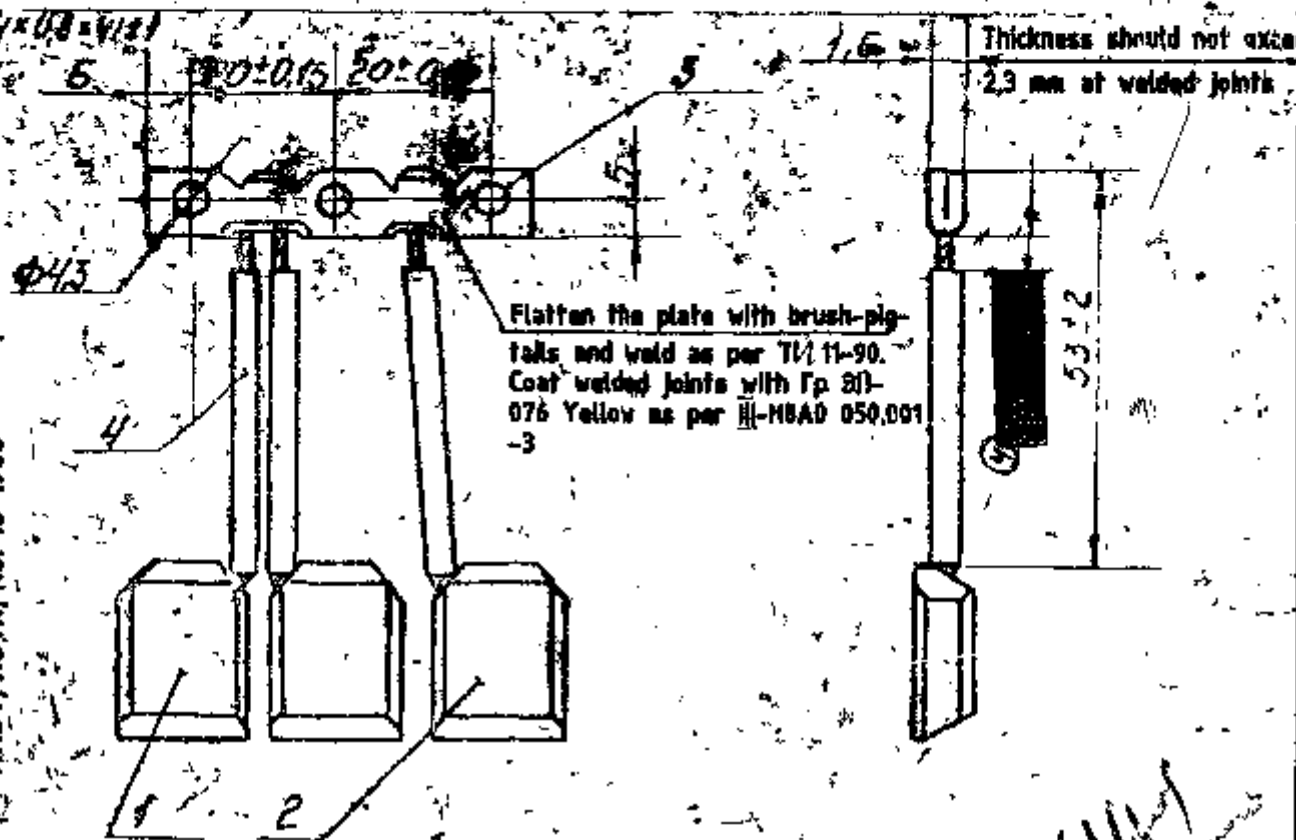


- 555/182
1. Grinding radius of brushes should be in compliance with remarks in drawings 557,007 H and 557,008 H,
  2. Height of brush after grinding should be at least 24mm,
  3. Part reference no: 4 may be made from rubber tube B4x0,8x41±1  
5p - 129 TY38-10554-76.



AMDT, NOTN, No: 06-1900

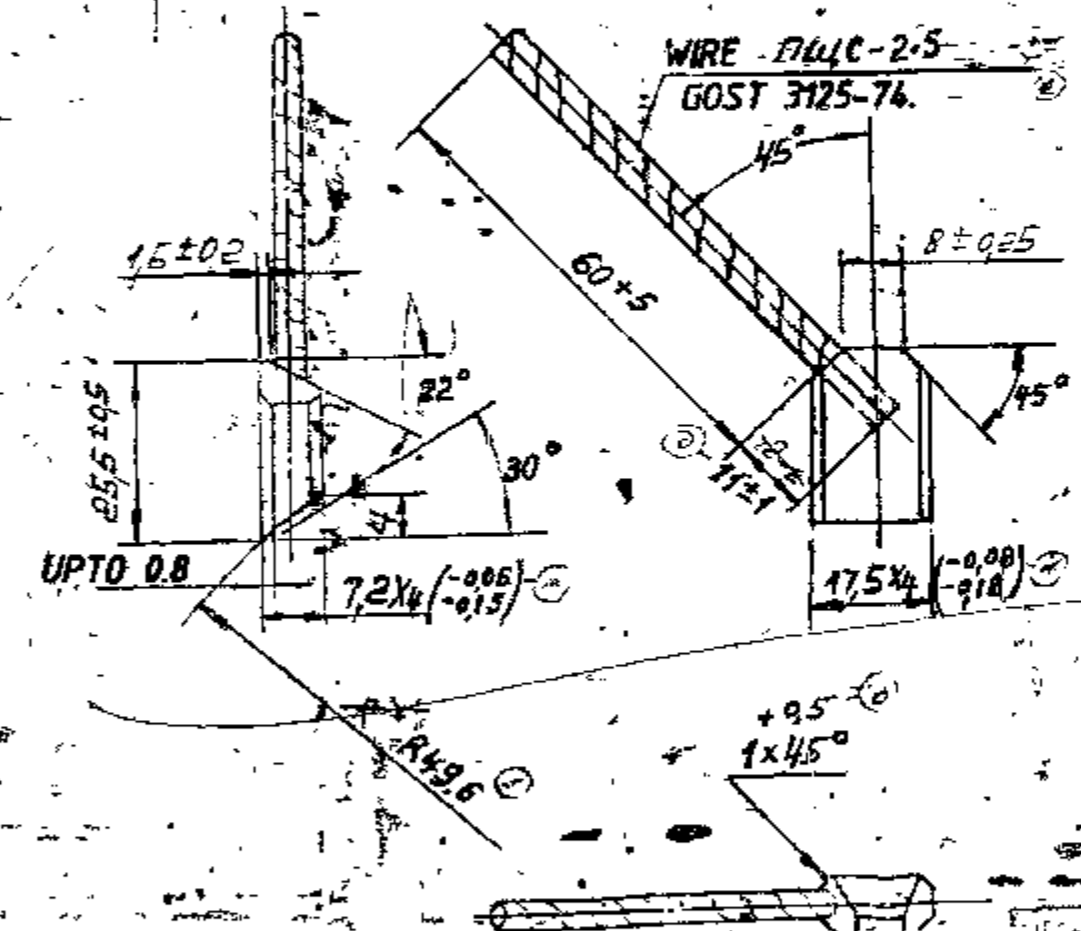
D  
83

4.		Rubber tube WPP-1338P external		
		φ4x0,5x41±1 TY38-40576-77.	3	
3.	751, 309 H	✓ Contact plate	1	
2.	557, 008 H	✓ Brush	2	
1.	557, 007 H	✓ Brush	1	
S.No	Designation	Description	Qty	Remarks

PILOT SAMPLE SHOULD BE APPROVED BY A H S P BEFORE BULK PRODUCTION

		EST. MASS 0,05 Kg	TO BE STAMPED OR MARKED WHERE INDICATED THUS * LETTERS	33
		ALL SHARP EDGES AND CORNERS TO BE REMOVED UNLESS OTHERWISE STATED MACHINED CORNERS TO HAVE R OUTSIDE R INSIDE EQUIVALENT CHAMFERS ARE PERMISSIBLE		
ISSUE DATE	NATURE OF AMENDMENTS	MATERIAL -	USED ON - 002-145 H	
DRN	SCALE- 1:1	CONTROLLERATE OF INSPECTION(HEAVY VEHICLES) AVADI		
CHD	DIMENSIONS IN mm	TITLE- BRUSH		
TCO	TOLERANCE ON DIMS UNLESS OTHERWISE STATED	D S CAT NUMBER		
APPO	ALL THREADS CONFORM TO	DRAWING NUMBER 555-182 H		
DATE 9-9-87				

1. Caulker's iron is copper silvered with at least 30% silver content.
2. Force to pull-out standard wire-rope should be at least 12 kg.
3. Sharp corners of upper and lower ends may be blunt upto 0,3m
4. Incomplete caulking of wire is allowed upto 0,5mm from upper end of brush.
5. Tolerance for free dimensions are as per accuracy class 7 A7,B7, for angles  $\pm 1^{\circ}30'$ .
6. Brushes are supplied without r R<sup>3</sup>) with additional dimensions "upto 0,8" and 30°.
7. Contact electrical resistance between the body of brush and wire should not exceed 1 m. Ohm.
8. Mark.



X 144  
93

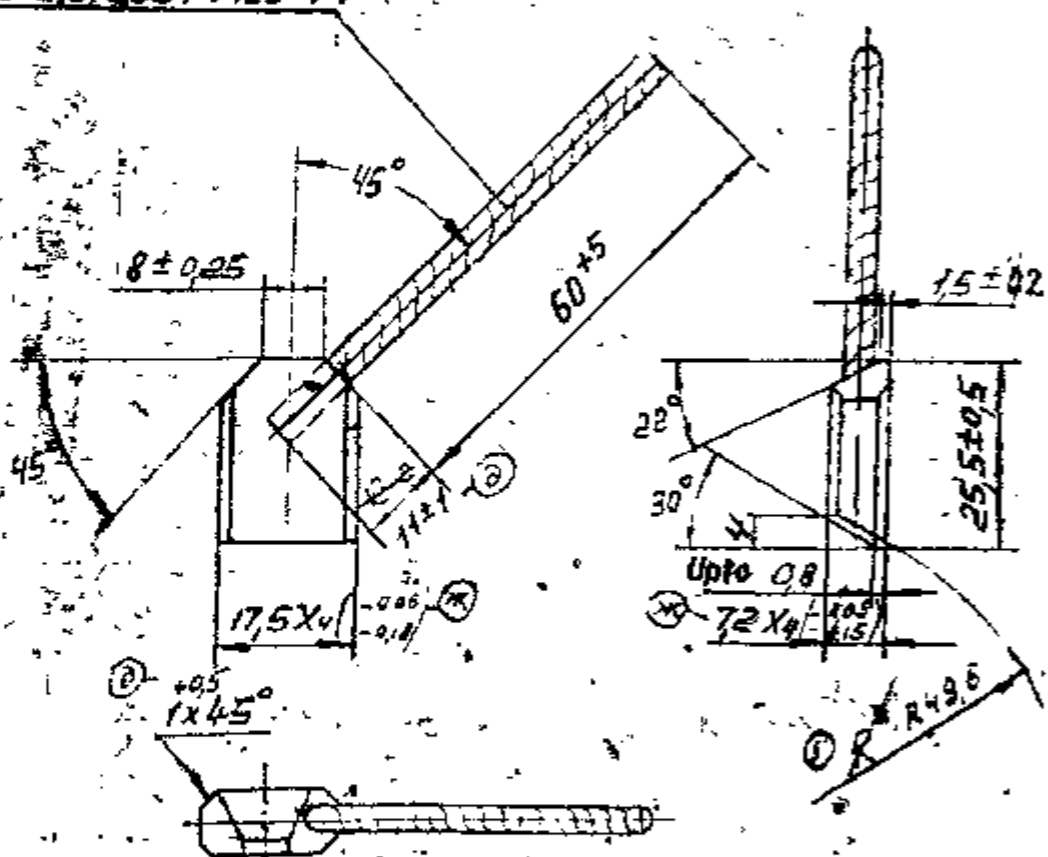
GRADE MFC - 7

PILOT SAMPLE SHOULD BE APPROVED BY A IFS P BEFORE BULK PRODUCTION Q. 104

EST MASS 0,013 Kg	TO BE STAMPED OR MARKED WHERE INDICATED THIS #	LETTERS) <b>104</b>
ALL SHARP EDGES AND CORNERS TO BE REMOVED UNLESS OTHERWISE STATED HATHED FORM TO HAVE R OUTSIDE R INSIDE EQUIVALENT CHAMFERS ARE PERMISSIBLE		
ISSUE DATE ORN	NATURE OF AMENDMENTS SCALE - 1:1	MATERIAL * SEE ABOVE
WHO TEC	DIMENSIONS IN mm TOLERANCE ON DIMS UNLESS OTHERWISE STATED.	USED ON 555-182 H
APPD DATE 9-9-87	ALL THREADS CONFORM TO	CONTROLLED BY INSPECTION (HEAVY VEHICLES) AVADI
TITLE BRUSH		DRAWING NUMBER 557-007 H

557.008 M

WIRE 7440-2.5 GOST 9125-74



- 1) Caulker's iron is copper silvered with at least 30% silver contact.
- 2) Force to pull-out standard wire-rope should be at least 12 kg.
- 3) Sharp corners of upper and lower ends may be blunt upto 0,3 mm.
- 4) Incomplete caulking of wire is allowed upto 0,5 mm from upper end of brush.
- 5) Brushes are supplied without R \* ) with additional dimensions upto 0,8 and 30°
- 6) Tolerances for free dimensions are as per accuracy class 7, A7, B7, for angles ±1° 30'
- 7) Contact electrical resistance between the body of brush and wire should not exceed 1,0 mohm.
- 8) Mark

GRADE HFC - X 111

PILOT SAMPLE SHOULD BE APPROVED BY A H S P BEFORE BULK PRODUCTION

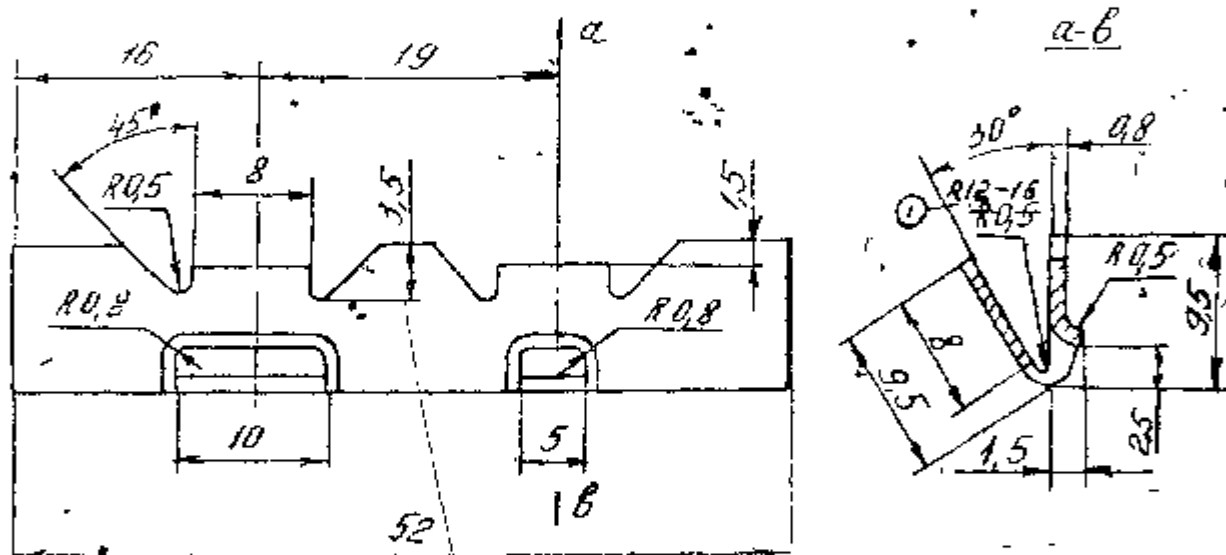
		EST. MASS 0,03 Kg	TO BE STAMPED OR MARKED WHERE INDICATED THUS $\Phi$ LETTERS )
		ALL SHARP EDGES AND CORNERS TO BE REMOVED UNLESS OTHERWISE STATED MACHINED CORNERS TO HAVE R OUTSIDE R INSIDE EQUIVALENT CHAMFERS ARE PERMISSIBLE	
ISSUE	DATE	NATURE OF AMENDMENTS	
DRH		SCALE - 1:1	MATERIAL - * SEE ABOVE
END		DIMENSIONS IN mm	USED ON - 555-182 M
YCD		TOLERANCE ON DIMS UNLESS OTHERWISE STATED	CONTROLLERATE OF INSPECTION (HEAVY VEHICLES) AVADI
APPD		ALL THREADS CONFORM TO	TITLE: BRUSH
DATE 9-9-07			D S CAT NUMBER
			DRAWING NUMBER 557-008 M

105

© H60E 19L

M/D

1. Tolerances for free dimensions are as per 22AT 52
2. Surface ruptures of material to depth not exceeding 0,2 mm are allowed in the corners of flanging.



AMDT, NGTN, No: 0057-82

\* SHEET 0,8 x 710 x 16,10 M.D. GOST 931-78  
 Д, ПРМ/08 А 63

D-83

PILOT SAMPLE SHOULD BE APPROVED BY A.H.S.P BEFORE BULK PRODUCTION

0116

		EST. MASS 0,005 Kg	TO BE STAMPED OR INDICATED THUS * ( LETTERS )
		ALL SHARP EDGES AND CORNERS TO BE REMOVED UNLESS OTHERWISE STATED MACHINED CORNER TO HAVE R OUTSIDE R INSIDE EQUIVALENT CHAMFERS ARE PERMISSIBLE	
ISSUE	DATE	NATURE OF AMENDMENTS	
DRN		SCALE - 2 : 1	MATERIAL - * SEE ABOVE
CHD		DIMENSIONS IN mm	USED ON :- 555-182 H
TCD		TOLERANCE ON DIMS UNLESS OTHERWISE STATED	CONTROLLERATE OF INSPECTION (HEAVY VEHICLES) AVADI
APPD		ALL THREADS TO CONFORM TO	TITLE - CONTACT PLATE
DATE 9-9-87			D S CAT NUMBER DRAWING NUMBER 751-309H

116