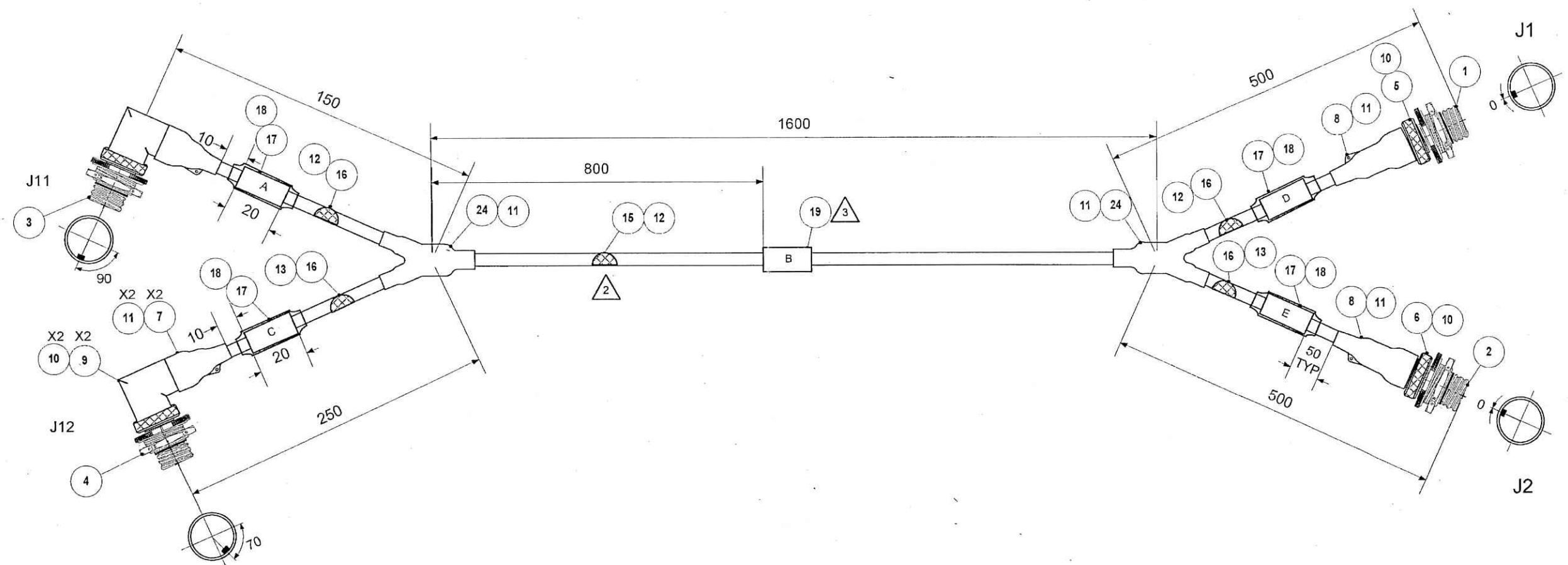


THIS DOCUMENT AND THE INFORMATION CONTAINED IN IT ARE PROPRIETARY AND CONFIDENTIAL TO OFT. NO PERSON OR ENTITY IS ALLOWED TO COPY, REPRINT, REPRODUCE OR PUBLISH ANY PART OF THIS DOCUMENT, NOR DISCLOSE ITS CONTENTS TO OTHERS, NOR MAKE ANY USE OF IT, NOR ALLOW OR ASSIST OTHERS TO MAKE ANY USE OF IT UNLESS BY THE PRIOR WRITTEN EXPRESS AUTHORIZATION OF OFT AND THEN ONLY TO THE EXTENT AUTHORIZED.
COPYRIGHT-OFT.

SHEET REV STATUS
ALL SHEETS ARE THE SAME REVISION

REVISION RECORD					
REV	ECO	DESCRIPTION	DATE	APVD	
01		Freeze	05-Nov-17	I. Arblman	
02		Freeze	24-May-18	I. Arblman	
-		Identical To Previous	Released	10-Oct-18	Z. Rabayev
A-	ZR1121/00	Released	12-May-19	Z. Rabayev	
B-	ZR1629/00	Released	18-Jun-20	Z. Rabayev	

UNCLASSIFIED COPY
DRAWINGS
27-03-21
Drawing Office
Factory
610016



- NOTES:
- 1. MANUFACTURING ACCORDING TO ELBIT 03711A-00
 - 2. BRAID TUBE F/N:15 IS THE OVER ALL SHIELD OF THE MIDDLE PART OF THE CABLE.
 - 3. THE TMS SHALL BE WITH NO CLEAR TUBE.

STAMPING REQUIREMENTS:

A	B	C	D	E
WPKS12B_J11 TO WPKH7_P11 SIGNALS	ELBIT WPKS12B Y18506A-XX MM/YY_S/N____ REV__	WPKS12B_J12 TO WPKH6_P12 POWER	WPKS12B_J1 TO WPKS2_P2	WPKS12B_J2 TO WPKS1_P1

SEE SEPARATE PARTS LIST

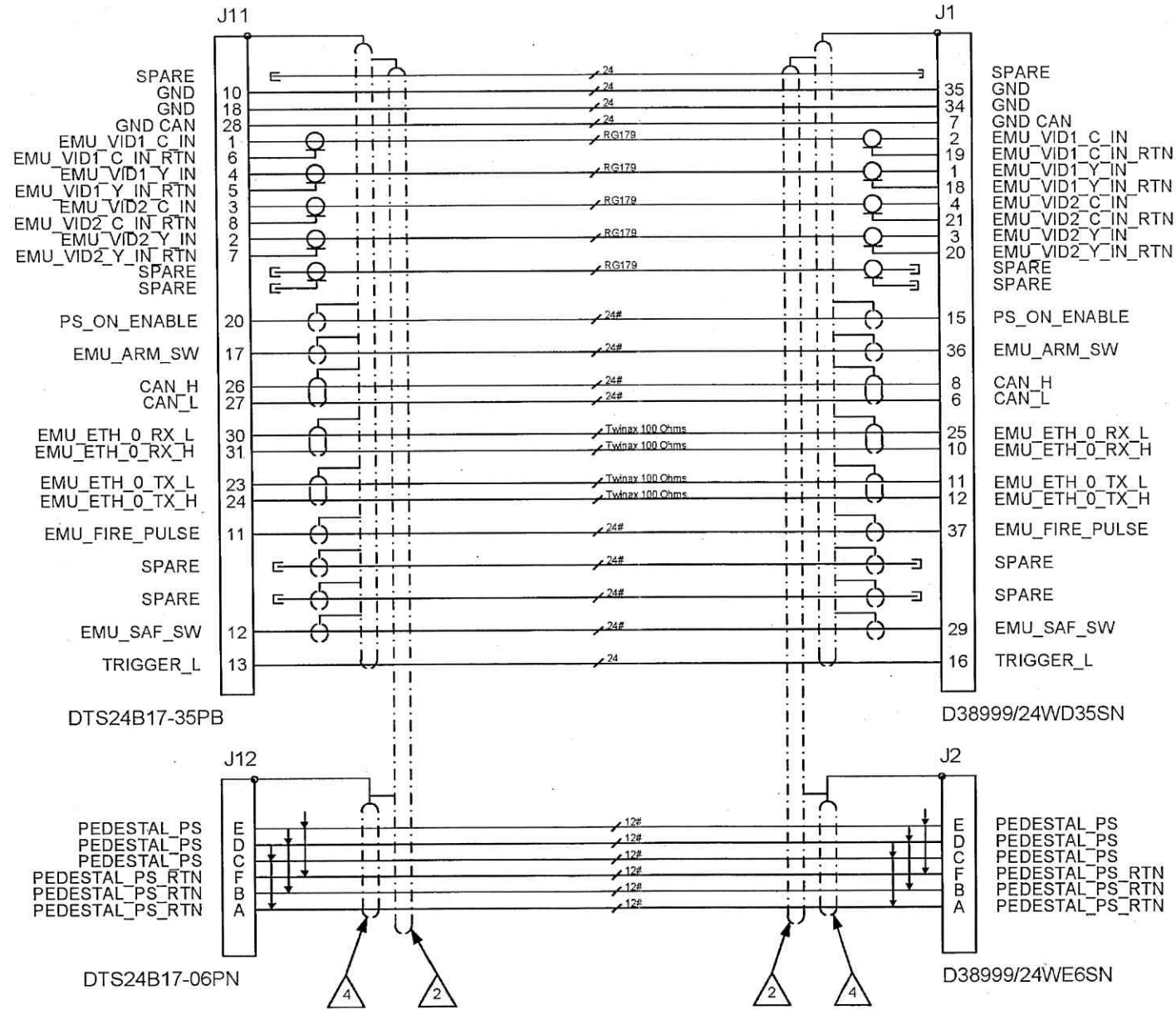
UNLESS OTHERWISE SPECIFIED		SIGNATURE	DATE	ORDNANCE FACTORY TIRUCHIRAPPALLI	
DIMENSIONS ARE IN MM PER ASME Y14.5M -1994		DRAWN			
TOLERANCES LINEAR ANGULAR		CHECKED		TITLE CABLE ASSY, WPKS12B	
3rd ANGLE PROJECTION		HOS/DDO		FOR: TRAVERSE ASSY OF: 12.7MM SRCG	
PROJECT OFFICER		OFFICER/PRODN		SIZE C	CAGE CODE 2291A
SURFACE TEXTURE IN Micro INCH		OFFICER/OC		DWG NO Y18506A-00	B-
		OFFICER/DDO		SCALE 1:1	SHEET 1 OF 2

DWG NO Y18506A-00
SH 1

THIS DOCUMENT AND THE INFORMATION CONTAINED IN IT ARE PROPRIETARY AND CONFIDENTIAL TO OFT. NO PERSON OR ENTITY IS ALLOWED TO COPY, REPRINT, REPRODUCE OR PUBLISH ANY PART OF THIS DOCUMENT, NOR DISCLOSE ITS CONTENTS TO OTHERS, NOR MAKE ANY USE OF IT, NOR ALLOW OR ASSIST OTHERS TO MAKE ANY USE OF IT UNLESS BY THE PRIOR WRITTEN EXPRESS AUTHORIZATION OF OFT AND THEN ONLY TO THE EXTENT AUTHORIZED.
COPYRIGHT-OFT.

WPKS12B

UNCLASSIFIED
 CORRECT COPY
 DRAWINGS
 27-03-21
 Drawing Office
 Ordnance Factory
 Machilipatnam-520014



- △ 2 BRAID TUBE F/N:15 IS THE OVER ALL SHIELD OF THE MIDDLE PART OF THE CABLE.
- △ 4 BRAID TUBE F/N:16 SHALL BE STRAIGHT FROM J12 TO J2.

SIZE	CAGE CODE	DWG NO	REV
C	2291A	Y18506A-00	B-
SCALE 1:1		SHEET 2 OF 2	

OFT

ASSEMBLY PARTS LIST

Assembly Parts List For: Y18506A-00

Rev: B-

Status: Released

Description: CABLE ASSY, WPKS12B

FN	CMD	PART NUM	ECO	DESCRIPTION	MB	QTY	UIM	REF. DES./REMARKS	MFG. PN / CUSTOMER	LA	LI
1	PO	99930156M		RECEPT CIRC 37 S NO.15 J/N	P	1.000	Each	J1	59173-D38999/24WD35SN		
2	PO	40332039577 (99940520M)		RECEPT CIRC 6 S NO.17 J/N	P	1.000	Each	J2	46429-D38999/24WE6SN		
3	PO	00157808N		RECEPT CIRC 55 P NO.17 MARIN.	P	1.000	EA	J11	44163-DTS24B17-35PB		
4	PO	00157610N		RECEPT CIRC 6 P NO.17 M.BRONZE	P	1.000	EA	J12	55386-DTS24B17-06PN		
5	MP	031518D-03		ADAPTER D38999-III-15-05	M	1	Each				
6	MP	031518E-03		ADAPTER D38999-III-17-05	M	1	Each				
7	VW	33230310M		BOOT SHRINK STR 1.12 TO .56	P	2	Each		58034-202K132-25-01		
8	VW	21126828000 (33230306M)		BOOT SHRINK STR 1.12 TO .56	P	2	Each		48142-D-382001-3-02		
9	PO	00150367N		BACKSHELL CONN #17 38999-3,4 R	P	2.000	Each	BS J11,J12	56194-BTH3-17-10-2-Z		
10	HO	00072033N		STRAP TIE DOWN CRES L=14.25" PRE	P	4	Each		47017-600-083-1		
11	YR	00003356N		ADHESIVE EPOXY POLYAMID KIT FO	P	15.000	GM		20012-S1125 KIT-8		
12	VW	99928297M		TUBE SHRINK .750/.375 BLK F.R.	P	2.250	MR		59033-M23053/16-004-0		
13	VW	40687004000 (27727002M)		TUBE SHRINK .500/.250 BLK F.R.	P	0.800	MR		55386-DR-25-1/2-0-SP		
15	VW	99930210M		BRAID TUBE .500ID CU/TIN(.625X	P	1.750	MR		54148-A-A-59569R36T0500		
16	VW	33373803M		BRAID TUBE .375ID CU/TIN(.625X	P	1.800	MR		54151-A-A-59569R36T0375		
17	VW	40687010677 (99963633M)	ZR1629	MARKER SLEEVE 3/4DIAx2.0 WHT	P	4	Each		58011-TMS-SCE-3/4-2.0-9		
18	VW	99941582M	ZR1629	TUBE SHRINK .750/.375 CLR F.R.	P	0.200	MR		58011-M23053/18-209-C		
19	VW	40687010777 (99963634M)	ZR1629	MARKER SLEEVE 1.0DIAx2.0 WHT	P	1	Each		58011-TMS-SCE-1-2.0-9		
24	VW	20206813600 (34356801M)		BOOT SHRINK Y-TRANSITION	P	2	Each		58034-382A023-25		
25	VW	00076163N		COAX TERMINATION 24AWG F/RG179	P	12	Each		58011-D-181-2224-90/9		
26	WO	40687012877 (34464970M)		CABLE TWINX 100OHM 24 AWG BLK *	P	5.300	MR		58034-0024A0311-0		
27	WO	99921309M		CABLE ELECT 1X24AWG SHLD TIN B	P	15.900	MR		58011-44A1111 24-1-9		
28	WO	40683002900 (99920592M)		CABLE COAX RG179BUJ OTHR OTHER*	P	13.250	MR		60247-M17/94-RG179		
29	WO	99928301M		CABLE ELECT 2X 24 AWG WHT PVF2*	P	2.650	MR		60016-M27500-24ML2T08		
30	WO	40682034924 (99929774M)		WIRE ELECT 24 AWG WHT TEFLON *	P	13.250	MR		70059-M81044/12-24-9		
31	WO	99946677M		CABLE ELECT 2X12AWG UNSHLD UNJ	P	7.950	MR		60016-M27500-12ML2U00		

ALL RIGHTS RESERVED
 THIS IS A COPY
 OF THE ORIGINAL DRAWINGS
 DATE: 27-03-21
 HHT
 Drawing Office
 Service Factory,
 Telephone: 620016

THIS DOCUMENT AND THE INFORMATION CONTAINED IN IT ARE PROPRIETARY AND CONFIDENTIAL TO OFT. NO PERSON OR ENTITY IS ALLOWED TO COPY, REPRINT, REPRODUCE OR PUBLISH ANY PART OF THIS DOCUMENT, NOR DISCLOSE ITS CONTENTS TO OTHERS, NOR MAKE ANY USE OF IT, NOR ALLOW OR ASSIST OTHERS TO MAKE ANY USE OF IT UNLESS BY THE PRIOR WRITTEN EXPRESS AUTHORIZATION OF OFT AND THEN ONLY TO THE EXTENT AUTHORIZED.
COPYRIGHT-OFT.

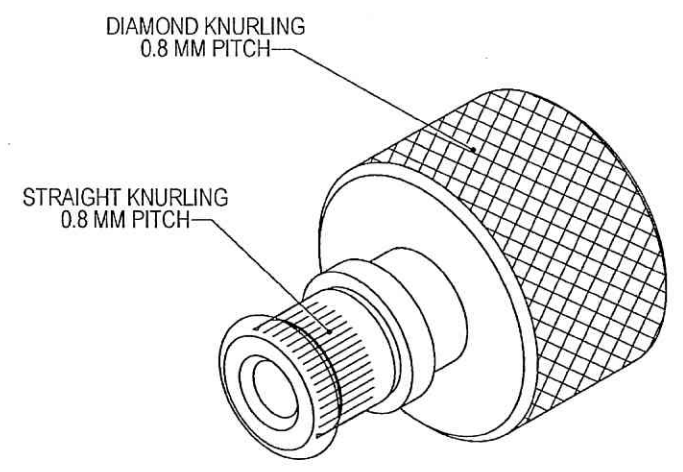
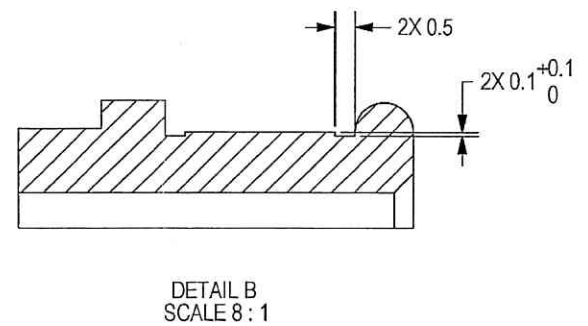
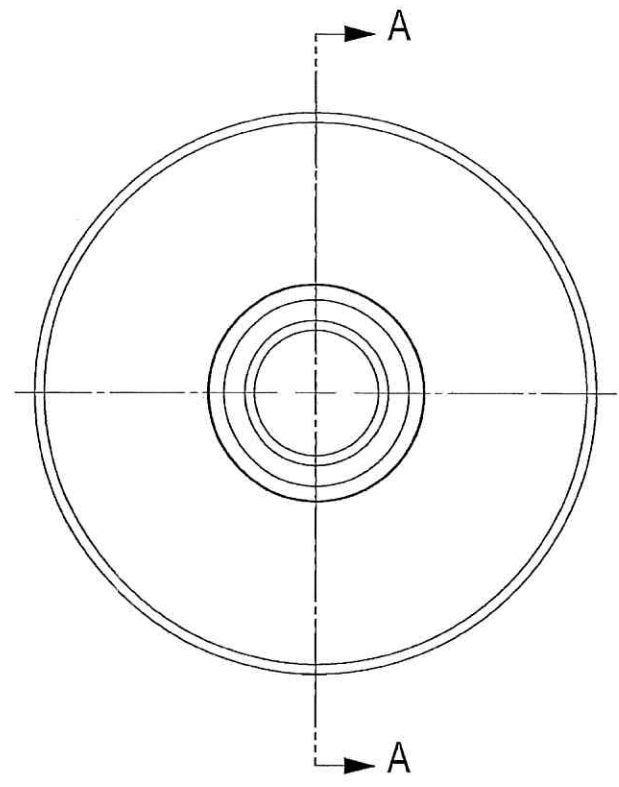
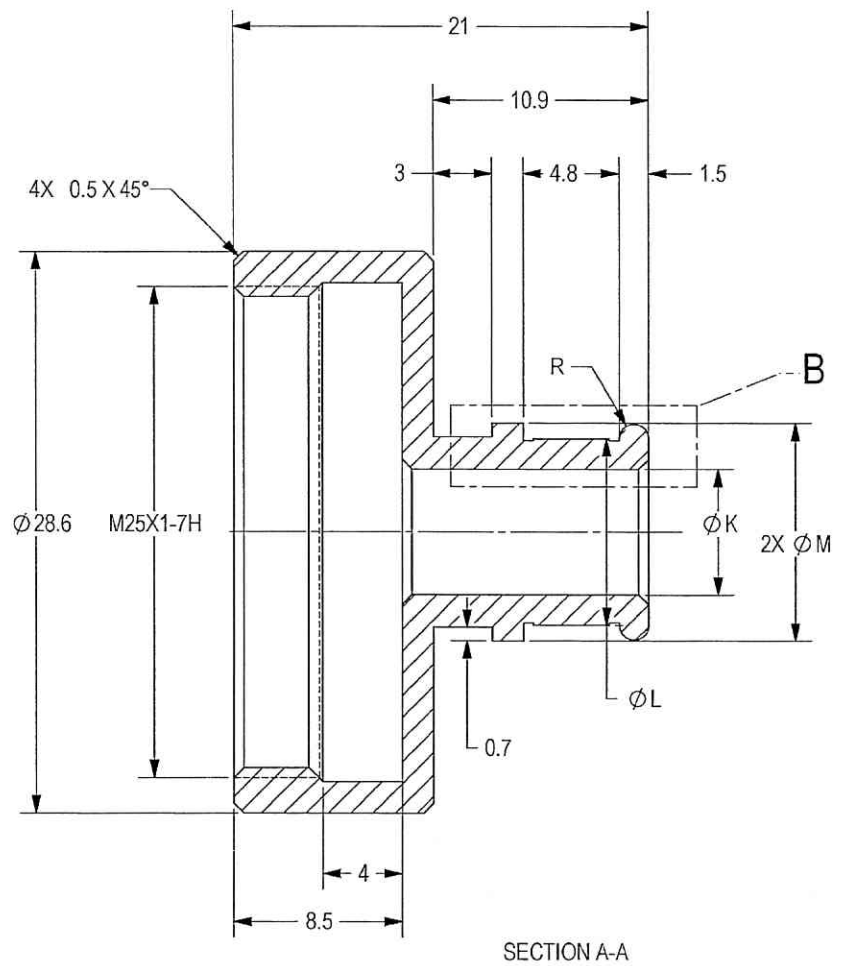
SHEET REV STATUS
ALL SHEETS ARE THE SAME REVISION

REVISION RECORD				
REV	ECO	DESCRIPTION	DATE	APVD
01		Freeze	08-Jul-09	M Levin
-		Released	16-Feb-10	A.Ben-or
A-	VA103/00	Released	14-Feb-11	D.Nave

NOTES :

- INTERPRET THIS DRAWING IAW ASME Y14.100M.
- MATERIAL: ALUM. ROD 6061-T6 PER AMS-QQ-A-225/8.
- UNLESS OTHERWISE SPECIFIED, UNDEFINED MACHINED FILLET MAX RADII SHALL BE 0.2.
- DEBURR AND REMOVE SHARP EDGES, APPROX. 0.2X45 Deg.
- FINISH:
 - ZINC COATING - OVER ELECTROLESS NICKEL.
 - ELECTROLESS NICKEL CLASS 3 GRADE B, 13 MICRON THICK PER MIL-C-26074.
 - ZINC COATING ELECTRODEPOSITED TYPE II, COLOR BLACK, CLASS 3 (OR SC2), 8 MICRON THICK PER ASTM B 633.
- QUALITY ASSURANCE PROVISIONS FOR THIS ITEM PER RDMQD00012P.
- PACKAGING AND PACKING:
THE FINISHED PART SHALL BE PRESERVED AND PACKAGED IN ACCORDANCE WITH MANUFACTURER'S COMMERCIAL PRACTICE.
- IDENTIFY PER MIL-STD-130 PARA 4.1.B, BY LABELING ITS CONTAINER WITH THE PART NUMBER. CHARACTERS 3.2 MM HIGH.

UN COPY
27-03-21
Drawing Office
Ordnance Factory
Tiruchirappalli



PART NO.	INDENT NO.	K	L	M
031518E-00	D38999-III-17-02	6.4	9.5	11.1
031518E-01	D38999-III-17-03	9.5	12.7	14.3
031518E-02	D38999-III-17-04	12.7	15.9	17.4
031518E-03	D38999-III-17-05	15.9	19.1	20.6

125

SEE ATTACHED MEDIA

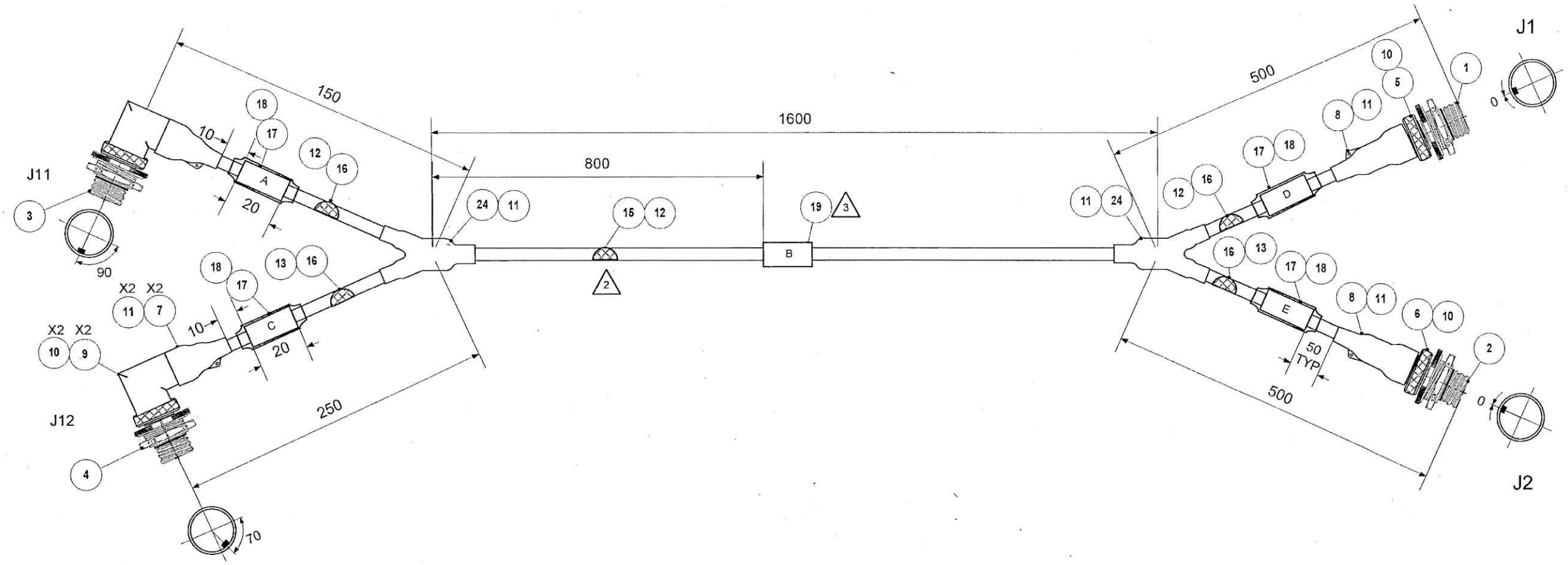
UNLESS OTHERWISE SPECIFIED		SIGNATURE		DATE	
DIMENSIONS ARE IN MM PER ASME Y14.5M-1994		DRAWN		17/2/20	
TOLERANCES		CHECKED		TITLE	
LINEAR	ANGULAR	HOS/DDO		FOR: CABLE ASSY, WPKS12B	
± 0.2	± 0.5°	OFFICER/PRODN		ADAPTER DRAWING, D38999-III-17 OF:12.7MM SRCG	
3rd ANGLE PROJECTION		OFFICER/QC		SIZE	
SURFACE TEXTURE IN Micro INCH		OFFICER/DDO		CAGE CODE	
				S0123	
				DWG NO	
				031518E-TB	
				SCALE 4:1	
				AUTOMATED DRAWING (SW)	
				SHEET 1 OF 1	

THIS DOCUMENT AND THE INFORMATION CONTAINED IN IT ARE PROPRIETARY AND CONFIDENTIAL TO OFT. NO PERSON OR ENTITY IS ALLOWED TO COPY, REPRINT, REPRODUCE OR PUBLISH ANY PART OF THIS DOCUMENT, NOR DISCLOSE ITS CONTENTS TO OTHERS, NOR MAKE ANY USE OF IT, NOR ALLOW OR ASSIST OTHERS TO MAKE ANY USE OF IT UNLESS BY THE PRIOR WRITTEN EXPRESS AUTHORIZATION OF OFT AND THEN ONLY TO THE EXTENT AUTHORIZED.
COPYRIGHT-OFT.

SHEET REV STATUS
ALL SHEETS ARE THE SAME REVISION

REVISION RECORD					
REV	ECO	DESCRIPTION	DATE	APVD	
01		Freeze	05-Nov-17	I. Arbilman	
02		Freeze	24-May-18	I. Arbilman	
-		Identical To Previous	Released	10-Oct-18	Z. Rabayev
A-	ZR1121/00	Released	12-May-19	Z. Rabayev	
B-	ZR1629/00	Released	18-Jun-20	Z. Rabayev	

27-03:21
Drawing Office
Ordnance Factory,
Tiruchirappalli-630018



- NOTES:
- 1. MANUFACTURING ACCORDING TO ELBIT 03711A-00
 - 2. BRAID TUBE F/N:15 IS THE OVER ALL SHIELD OF THE MIDDLE PART OF THE CABLE.
 - 3. THE TMS SHALL BE WITH NO CLEAR TUBE.

STAMPING REQUIREMENTS:

A	B	C	D	E
WPKS12B_J11 TO WPKH7_P11 SIGNALS	ELBIT WPKS12B Y18506A-XX MM/YY_S/N REV_	WPKS12B_J12 TO WPKH6_P12 POWER	WPKS12B_J1 TO WPKS2_P2	WPKS12B_J2 TO WPKS1_P1

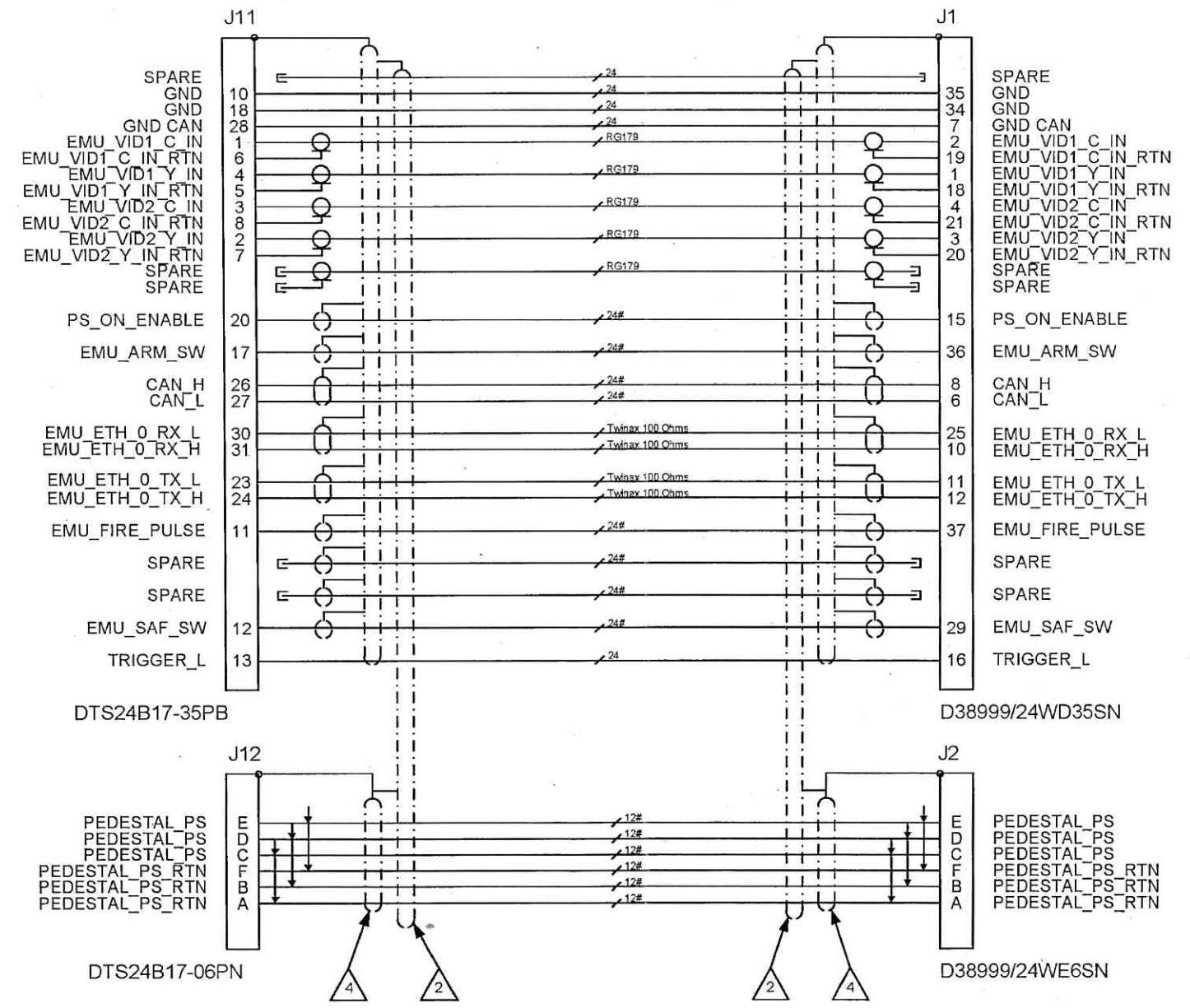
SEE SEPARATE PARTS LIST

UNLESS OTHERWISE SPECIFIED		SIGNATURE	DATE	ORDNANCE FACTORY TIRUCHIRAPPALLI
DIMENSIONS ARE IN MM PER ASME Y14.5M -1994		DRAWN		
TOLERANCES		CHECKED		TITLE
LINEAR	ANGULAR	HOS/DDO		CABLE ASSY, WPKS12B
3rd. ANGLE PROJECTION		OFFICER/PRODN		FOR: TRAVERSE ASSY
SURFACE TEXTURE IN Micro INCH		OFFICER/QC		OF: 12.7MM SRCG
PROJECT OFFICER	OFFICER/DDO			SIZE
				GAGE CODE
				DWG NO
				C 2291A
				Y18506A-00
				B-
				SCALE 1:1
				SHEET 1 OF 2

THIS DOCUMENT AND THE INFORMATION CONTAINED IN IT ARE PROPRIETARY AND CONFIDENTIAL TO OFT. NO PERSON OR ENTITY IS ALLOWED TO COPY, REPRINT, REPRODUCE OR PUBLISH ANY PART OF THIS DOCUMENT, NOR DISCLOSE ITS CONTENTS TO OTHERS, NOR MAKE ANY USE OF IT, NOR ALLOW OR ASSIST OTHERS TO MAKE ANY USE OF IT UNLESS BY THE PRIOR WRITTEN EXPRESS AUTHORIZATION OF OFT AND THEN ONLY TO THE EXTENT AUTHORIZED.
 COPYRIGHT-OFT.

WPKS12B

REVISION COPY
 DRAWINGS
 27-03-21
 Drawing Office
 Defence Factory
 Madhapalle-620014



- △ 2 BRAID TUBE F/N:15 IS THE OVER ALL SHIELD OF THE MIDDLE PART OF THE CABLE.
- △ 4 BRAID TUBE F/N:16 SHALL BE STRAIGHT FROM J12 TO J2.

SIZE C	CAGE CODE 2291A	DWG NO Y18506A-00	REV B-
SCALE 1:1		SHEET 2 OF 2	

OFT

ASSEMBLY PARTS LIST

Assembly Parts List For: Y18506A-00

Rev: B-

Status: Released

Description: CABLE ASSY, WPKS12B

FN	CMD	PART NUM	ECO	DESCRIPTION	MB	QTY	U/M	REF. DES./REMARKS	MFG. PN / CUSTOMER	LA	LI
1	PO	99930156M		RECEPT CIRC 37 S NO.15 J/N	P	1.000	Each	J1	59173-D38999/24WD35SN		
2	PO	40332039577 (99940520M)		RECEPT CIRC 6 S NO.17 J/N	P	1.000	Each	J2	46429-D38999/24WE6SN		
3	PO	00157808N		RECEPT CIRC 55 P NO.17 MARIN.	P	1.000	EA	J11	44163-DTS24B17-35PB		
4	PO	00157610N		RECEPT CIRC 6 P NO.17 M.BRONZE	P	1.000	EA	J12	55386-DTS24B17-06PN		
5	MP	031518D-03		ADAPTER D38999-III-15-05	M	1	Each				
6	MP	031518E-03		ADAPTER D38999-III-17-05	M	1	Each				
7	VW	33230310M		BOOT SHRINK STR 1.12 TO .56	P	2	Each		58034-202K132-25-01		
8	VW	21126828000 (33230306M)		BOOT SHRINK STR 1.12 TO .56	P	2	Each		48142-D-382001-3-02		
9	PO	00150367N		BACKSHELL CONN #17 38999-3,4 R	P	2.000	Each	BS J11,J12	56194-BTH3-17-10-2-Z		
10	HO	00072033N		STRAP TIE DOWN CRES L=14.25" PRE	P	4	Each		47017-600-083-1		
11	YR	00003356N		ADHESIVE EPOXY POLYAMID KIT FO	P	15.000	GM		20012-S1125 KIT-8		
12	VW	99928297M		TUBE SHRINK .750/.375 BLK F.R.	P	2.250	MR		59033-M23053/16-004-0		
13	VW	40687004000 (27727002M)		TUBE SHRINK .500/.250 BLK F.R.	P	0.800	MR		55386-DR-25-1/2-0-SP		
15	VW	99930210M		BRAID TUBE .500ID CU/TIN(.625X	P	1.750	MR		54148-A-A-59569R36T0500		
16	VW	33373803M		BRAID TUBE .375ID CU/TIN(.625X	P	1.800	MR		54151-A-A-59569R36T0375		
17	VW	40687010677 (99963633M)	ZR1629	MARKER SLEEVE 3/4DIAx2.0 WHT	P	4	Each		58011-TMS-SCE-3/4-2.0-9		
18	VW	99941582M	ZR1629	TUBE SHRINK .750/.375 CLR F.R.	P	0.200	MR		58011-M23053/18-209-C		
19	VW	40687010777 (99963634M)	ZR1629	MARKER SLEEVE 1.0DIAx2.0 WHT	P	1	Each		58011-TMS-SCE-1-2.0-9		
24	VW	20206813600 (34356801M)		BOOT SHRINK Y-TRANSITION	P	2	Each		58034-382A023-25		
25	VW	00076163N		COAX TERMINATION 24AWG F/RG179	P	12	Each		58011-D-181-2224-90/9		
26	WO	40687012877 (34464970M)		CABLE TWIX 100OHM 24 AWG BLK *	P	5.300	MR		58034-0024A0311-0		
27	WO	99921309M		CABLE ELECT 1X24AWG SHLD TIN B	P	15.900	MR		58011-44A1111 24-1-9		
28	WO	40683002900 (99920592M)		CABLE COAX RG179BUJ OTHR OTHER*	P	13.250	MR		60247-M17/94-RG179		
29	WO	99928301M		CABLE ELECT 2X 24 AWG WHT PVF2*	P	2.650	MR		60016-M27500-24ML2T08		
30	WO	40682034924 (99929774M)		WIRE ELECT 24 AWG WHT TEZEL 0*	P	13.250	MR		70059-M81044/12-24-9		
31	WO	99946677M		CABLE ELECT 2X12AWG UNSHLD UNJ	P	7.950	MR		60016-M27500-12ML2U00		

JW 021-03
 COPY
 AT THE... 27-03-21...
 Drawing Office
 Chennai Factory,
 Tiruchirappalli-620016

THIS DOCUMENT AND THE INFORMATION CONTAINED IN IT ARE PROPRIETARY AND CONFIDENTIAL TO OFT. NO PERSON OR ENTITY IS ALLOWED TO COPY, REPRINT, REPRODUCE OR PUBLISH ANY PART OF THIS DOCUMENT, NOR DISCLOSE ITS CONTENTS TO OTHERS, NOR MAKE ANY USE OF IT, NOR ALLOW OR ASSIST OTHERS TO MAKE ANY USE OF IT UNLESS BY THE PRIOR WRITTEN EXPRESS AUTHORIZATION OF OFT AND THEN ONLY TO THE EXTENT AUTHORIZED.
 COPYRIGHT-OFT.

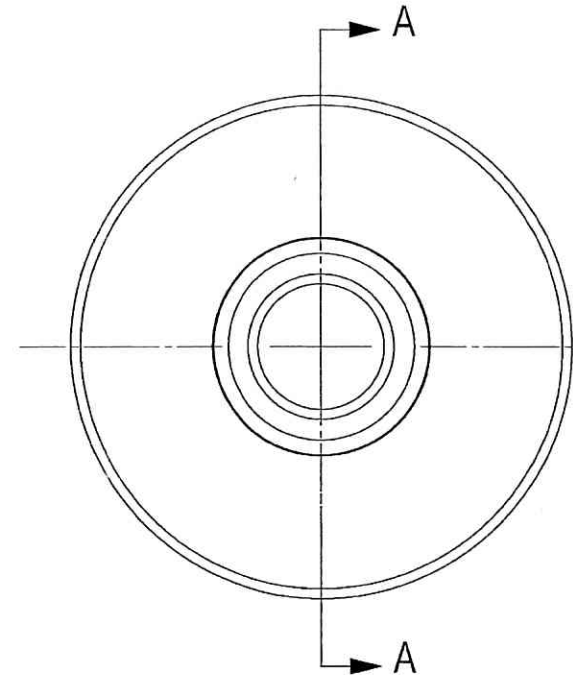
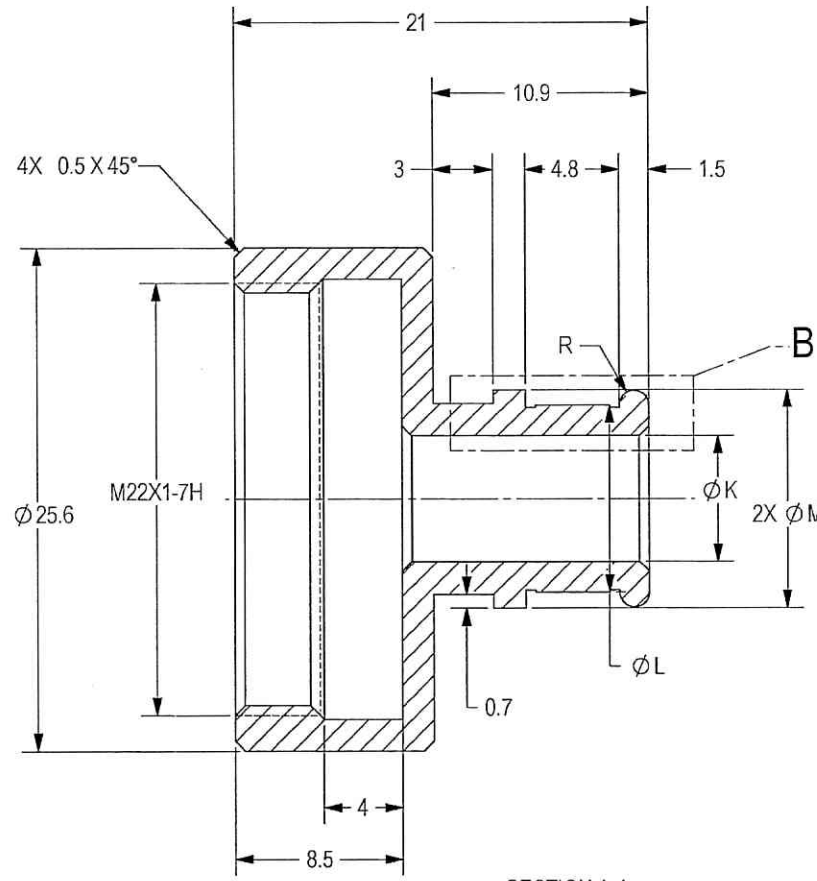
SHEET REV STATUS
 ALL SHEETS ARE THE SAME REVISION

REVISION RECORD				
REV	ECO	DESCRIPTION	DATE	APVD
01		Freeze	08-Jul-09	M. Levin
-		Released	26-Nov-09	A. Ben-or
A-	VA103/00	Released	14-Feb-11	D. Nave

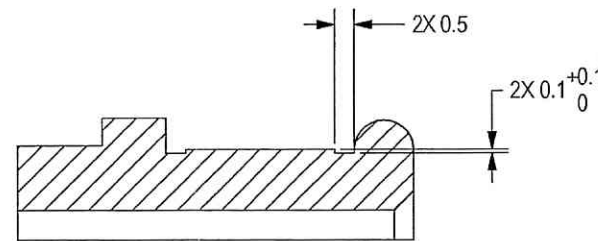
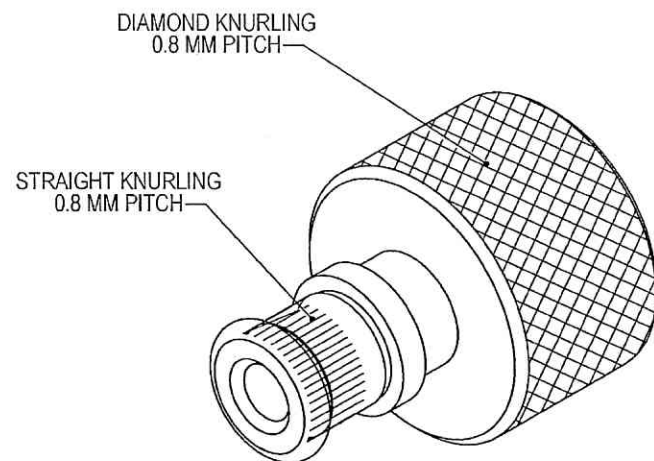
NOTES :

1. INTERPRET THIS DRAWING IAW ASME Y14.100M.
2. MATERIAL: ALUM. ROD 6061-T6 PER AMS-QQ-A-225/8.
3. UNLESS OTHERWISE SPECIFIED, UNDEFINED MACHINED FILLET MAX RADII SHALL BE 0.2.
4. DEBURR AND REMOVE SHARP EDGES, APPROX. 0.2X45 Deg.
5. FINISH:
 - 5.1. ZINC COATING - OVER ELECTROLESS NICKEL.
 - 5.2. ELECTROLESS NICKEL CLASS 3 GRADE B, 13 MICRON THICK PER MIL-C-26074.
 - 5.2. ZINC COATING ELECTRODEPOSITED TYPE II, COLOR BLACK, CLASS 3 (OR SC2), 8 MICRON THICK PER ASTM B 633.
6. QUALITY ASSURANCE PROVISIONS FOR THIS ITEM PER RDMQD00012P.
7. PACKAGING AND PACKING:

THE FINISHED PART SHALL BE PRESERVED AND PACKAGED IN ACCORDANCE WITH MANUFACTURER'S COMMERCIAL PRACTICE.
8. IDENTIFY PER MIL-STD-130 PARA 4.1.B, BY LABELING ITS CONTAINER WITH THE PART NUMBER. CHARACTERS 3.2 MM HIGH.



ENTRUSTED CORRECT COPY
 27-03-21
 Drawing Office
 Ordnance Factory,
 Tiruchirappalli-620016



DETAIL B
 SCALE 8 : 1

PART NO.	INDENT NO.	K	L	M
031518D-00	D38999-III-15-02	6.4	9.5	11.1
031518D-01	D38999-III-15-03	9.5	12.7	14.3
031518D-02	D38999-III-15-04	12.7	15.9	17.4
031518D-03	D38999-III-15-05	15.9	19.1	20.6

SEE ATTACHED MEDIA

125

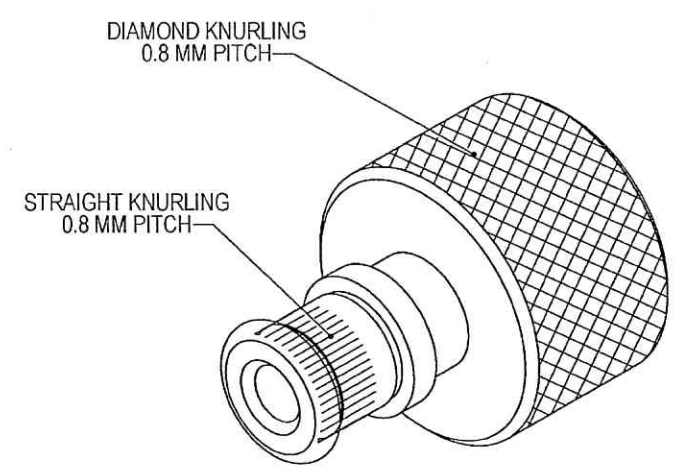
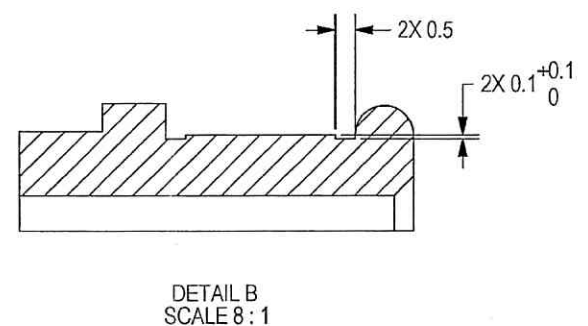
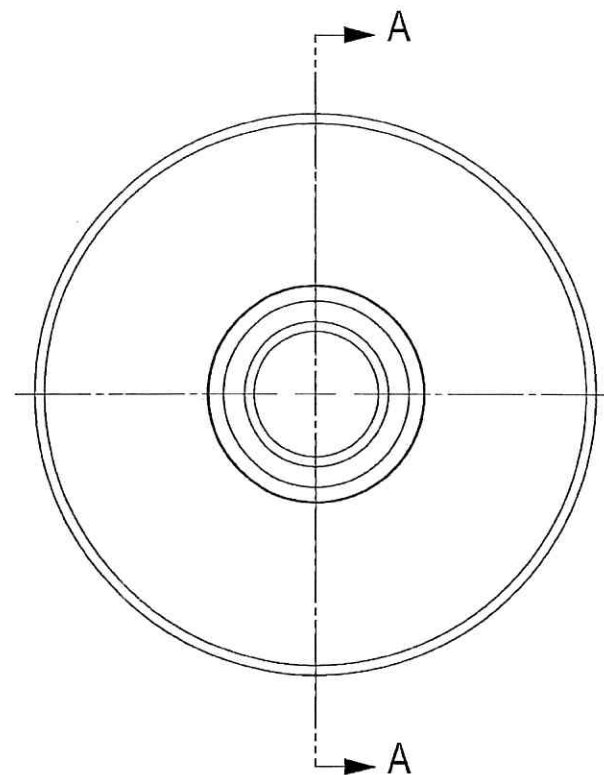
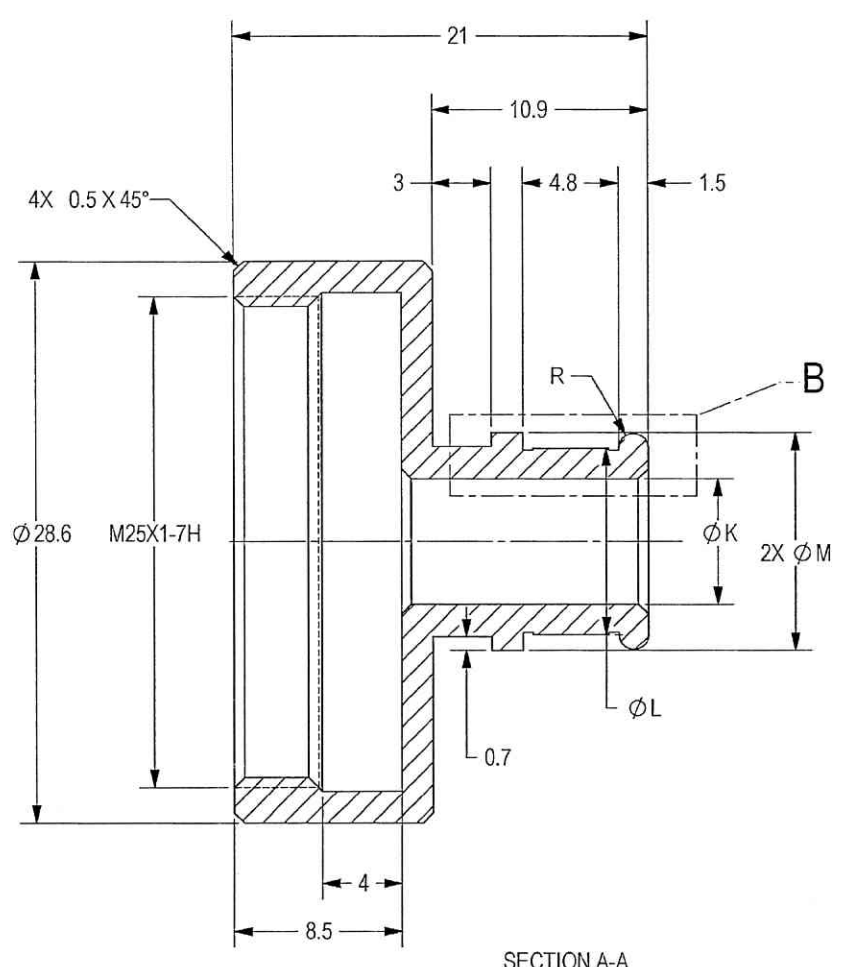
UNLESS OTHERWISE SPECIFIED	SIGNATURE	DATE	ORDNANCE FACTORY TIRUCHIRAPPALLI
DIMENSIONS ARE IN MM PER ASME Y14.5M-1994	DRAWN	17/2/20	
TOLERANCES	CHECKED		TITLE
LINEAR ±0.2	HOS/DDO	18/10/20	FOR: CABLE ASSY, WPKS12B
ANGULAR ±0.5°	OFFICER/PRODN		ADAPTER DRAWING, D38999-III-15 OF:12.7MM SRCG
3rd ANGLE PROJECTION	OFFICER/QC		SIZE C
	OFFICER/DDO		CAGE CODE S0123
PROJECT OFFICER			DWG NO 031518D-TB
SURFACE TEXTURE IN Micro INCH			SCALE 4:1
			AUTOMATED DRAWING (SW)
			SHEET 1 OF 1

THIS DOCUMENT AND THE INFORMATION CONTAINED IN IT ARE PROPRIETARY AND CONFIDENTIAL TO OFT. NO PERSON OR ENTITY IS ALLOWED TO COPY, REPRINT, REPRODUCE OR PUBLISH ANY PART OF THIS DOCUMENT, NOR DISCLOSE ITS CONTENTS TO OTHERS, NOR MAKE ANY USE OF IT, NOR ALLOW OR ASSIST OTHERS TO MAKE ANY USE OF IT UNLESS BY THE PRIOR WRITTEN EXPRESS AUTHORIZATION OF OFT AND THEN ONLY TO THE EXTENT AUTHORIZED.
COPYRIGHT-OFT.

SHEET REV STATUS
ALL SHEETS ARE THE SAME REVISION

REVISION RECORD				
REV	ECO	DESCRIPTION	DATE	APVD
01		Freeze	08-Jul-09	M Levin
		Released	16-Feb-10	A.Ben-or
A-	VA103/00	Released	14-Feb-11	D.Nave

- NOTES :
1. INTERPRET THIS DRAWING IAW ASME Y14.100M.
 2. MATERIAL: ALUM. ROD 6061-T6 PER AMS-QQ-A-225/8.
 3. UNLESS OTHERWISE SPECIFIED, UNDEFINED MACHINED FILLET MAX RADII SHALL BE 0.2.
 4. DEBURR AND REMOVE SHARP EDGES, APPROX. 0.2X45 Deg.
 5. FINISH:
 - 5.1. ZINC COATING - OVER ELECTROLESS NICKEL.
 - 5.2. ELECTROLESS NICKEL CLASS 3 GRADE B, 13 MICRON THICK PER MIL-C-26074.
 - 5.2. ZINC COATING ELECTRODEPOSITED TYPE II, COLOR BLACK, CLASS 3 (OR SC2), 8 MICRON THICK PER ASTM B 633.
 6. QUALITY ASSURANCE PROVISIONS FOR THIS ITEM PER RDMQD00012P.
 7. PACKAGING AND PACKING:
THE FINISHED PART SHALL BE PRESERVED AND PACKAGED IN ACCORDANCE WITH MANUFACTURER'S COMMERCIAL PRACTICE.
 8. IDENTIFY PER MIL-STD-130 PARA 4.1.B, BY LABELING ITS CONTAINER WITH THE PART NUMBER. CHARACTERS 3.2 MM HIGH.



UNCLASSIFIED
27-03-21
Drawing Office
Ordnance Factory,
Tiruchirappalli-620015

PART NO.	INDENT NO.	K	L	M
031518E-00	D38999-III-17-02	6.4	9.5	11.1
031518E-01	D38999-III-17-03	9.5	12.7	14.3
031518E-02	D38999-III-17-04	12.7	15.9	17.4
031518E-03	D38999-III-17-05	15.9	19.1	20.6

125

SEE ATTACHED MEDIA

UNLESS OTHERWISE SPECIFIED	SIGNATURE	DATE	ORDNANCE FACTORY TIRUCHIRAPPALLI	
DIMENSIONS ARE IN MM PER ASME Y14.5M -1994	DRAWN	17/2/20	FOR: CABLE ASSY, WPKS12B	
TOLERANCES LINEAR ANGULAR	CHECKED		TITLE ADAPTER DRAWING, D38999-III-17-05 OF:12.7MM SRCG	
±0.2 ±0.5°	HOS/DDO	18/04	SIZE	CAGE CODE
3rd ANGLE PROJECTION	OFFICER/PRODN		C	S0123
	OFFICER/OC		DWG NO	031518E-TB
	OFFICER/DDO		SCALE	4:1
SURFACE TEXTURE IN Micro INCH			AUTOMATED DRAWING (SW)	SHEET 1 OF 1