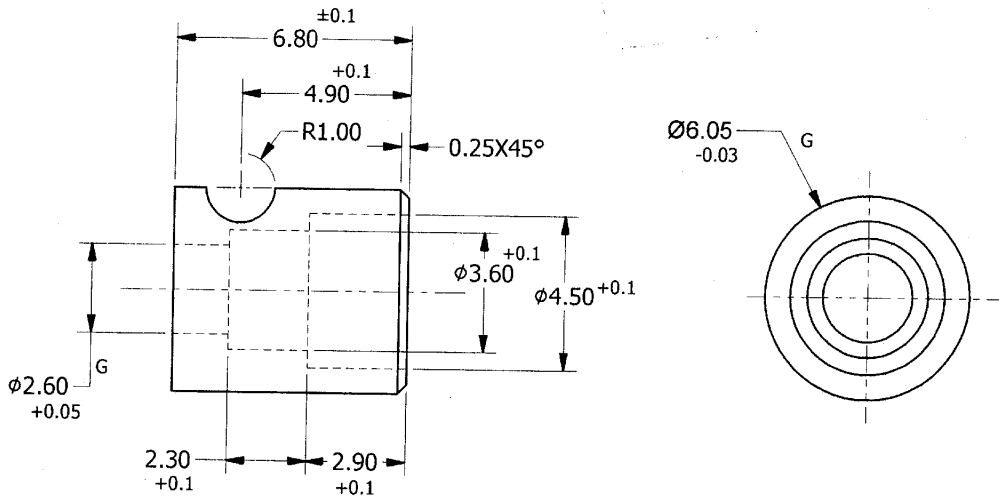


*As per
03/06/20*



MATERIAL:- STEEL BS970 Pt.1:1983 Gd.817M40 (En-24) OR 826M40 (En-26)

HEAT TREATMENT:- HARDENED & TEMPERED TO 528 - 613 H.V. (51 -56 HRC)

PROTECTIVE FINISH:- PHOSPHATED TO SPECN. J.S.S. -0465-01:1988 CLASS II (ACCELERATED) OIL FINISH.

ALT. MATL.:- ASTM A465 OR MPIF MIM-4605

DIMENSIONS ARE IN mm.

IMPT. DIMNS. ARE MARKED THUS '⊕'

INFORMATION MKD. THUS '†' TO BE MKD. ON

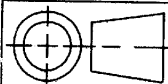
SURFACE MARKED 'G' TO BE GRIND.

REVOLVER.32 (7.65 mm) SIDE SWING

RECOIL PLATE (EXPERIMENTAL)

SCALE

5 : 1



**SMALL ARMS FACTORY
KANPUR**

DRAWN	TRACED	CHKD.
-------	--------	-------

A.S.RANA

DATE	15.07.2020
------	------------

APPROVED

JWM/DDO

DRG.NO.

RV- 03/6 SW

SHEET 1 OF 1

NOTE! MINOR DIMS. MAY BE CHANGED.