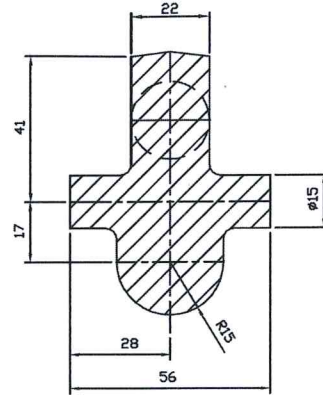
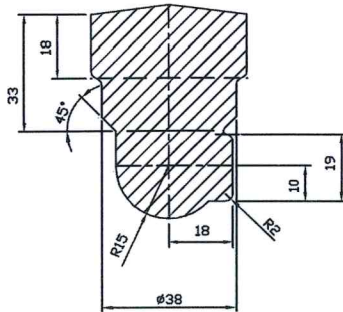
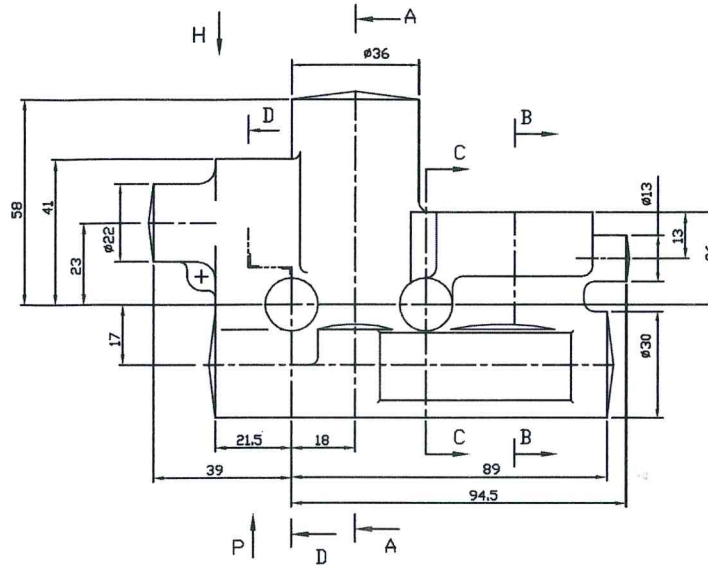


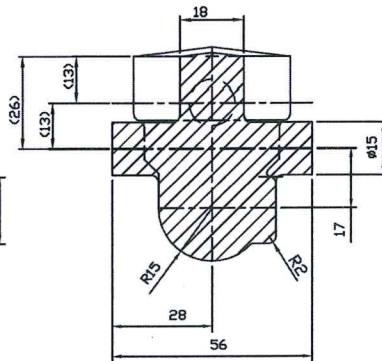
SECTION-AA



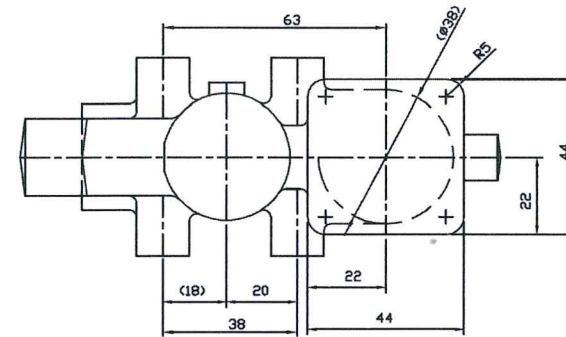
SECTION-DD



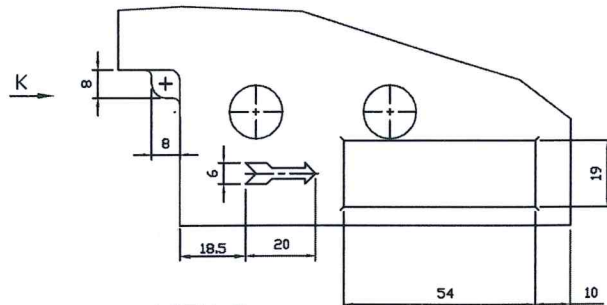
SECTION-BB



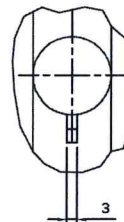
SECTION-CC



VIEW-H



VIEW-P



VIEW-K

NOTE:-

1. TECH SPEC. ON STAMPING ARE AS PER DST 190003-72
2. FORGING DRAFT 7° MAX. RADII 3 MM.
3. UNLESS OTHERWISE SPECIFIED TOL. ON STAMPING ARE AS PER AH-1986. (555-65)
TOL. ON FREE DIM. ARE AS PER 22 AT-52
4. HARDNESS HB > 100
5. NEAREST EQUI. MATL ALUMINIUM ALLOY 22588 IS:734-75

PROVISIONAL DRAWING FOR TENDER ONLY

FORGING DRG PREPARED BASED ON COMP. DRG ADY3-008

MATERIAL			FORGING DRAWING NO.	WEIGHT
AL. ALLOY AK6 GST 21488-76			OFPM/00435	
ALL DIMENSIONS ARE IN MM			COLLABORATOR'S DWG No.	
			ADYS-008	
DRAWN	DVE	SIGN	BODY (FORGING)	SCALE
CHKD	GR	DATE		PROJECTION
APPVD	BOD/DS			1:1
UNSPECIFIED DEVIATIONS ARE AS PER IS:2102			ORDNANCE FACTORY MEDAK	SHEET 1 OF 1 SHEETS