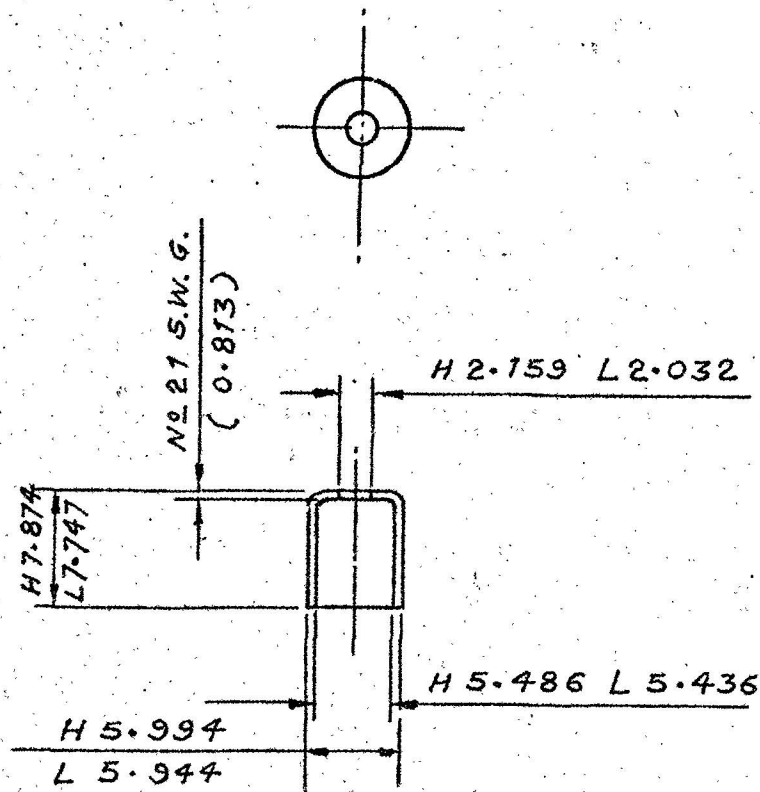


QX 1254
PART NO

DRG CONVENTIONS CONFORM TO IS 696
DIMNS. ARE IN mm

DCI 25257-A



NOTE :-

TOL ON UNTOL DIMENSIONS
FOR ONE DECIMAL PLACE ± 1.3
FOR TWO OR MORE DECIMAL PLACES $\pm .13$

ANNEAL TO COLLAPSE NOT MORE THAN 0.89
WHEN A LOAD OF 444.82 N IS APPLIED ON TOP.
THE CUP MUST COLLAPSE TO A HEIGHT NOT
GREATER THAN 2.79 WHEN A LOAD OF 800.68 N
IS APPLIED

TO BE TIN PLATED TO BS 1872 CLASS E ALL OVER.
DIMENSIONS APPLY AFTER PLATING

07-07-2010			DRG. SCANNED WITHOUT CHANGE			DRN:- SDI-	CHD:- SDI-	TCD-RDT	COMP.-R	ASSY DRG
27-6-87	DCI 34168-A		MATL AMENDED & D S CAT NO ADDED.					SCALE - 2:1		QX 146 GE
15-4-85			RETRACED WITHOUT CHANGE			C D MAN	0/1 C D O	EST MASS -		
			PREVIOUS D C'S (1) NOS 25257-A, 32465-A			APPD		GAUGE SCHD -		
						SDI		FOR C.I.(A) DATE 1-6-55		
R NO	DATE	AUTHORITY	REVISION	ZONE	AHSP	D O		MATE: BRASS BS 2870:1980 CZ 101 CONDITION 'O'		DESIGNER'S REF
								PROTECTIVE FINISH - SEE ABOVE		S 5/7805/E/621

PART NO
QX 1254
D.S. CAT. NO
1390-000337
AHSP:- C.I.(A) KIRKEE

CUP