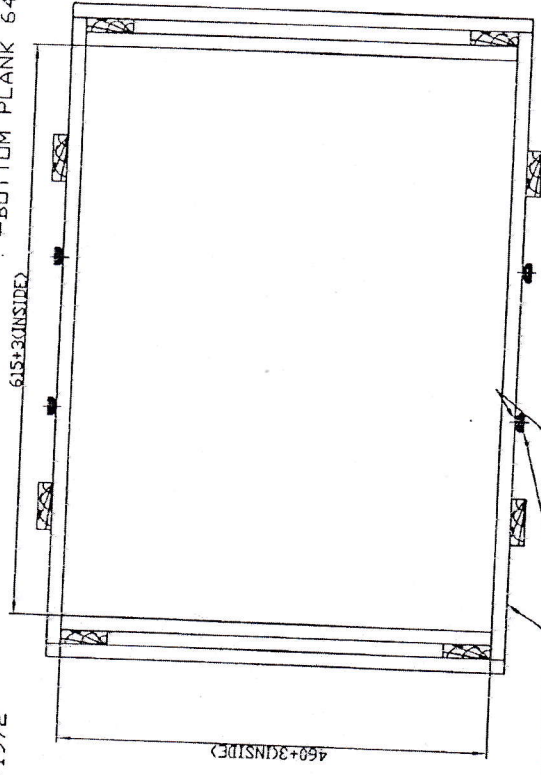
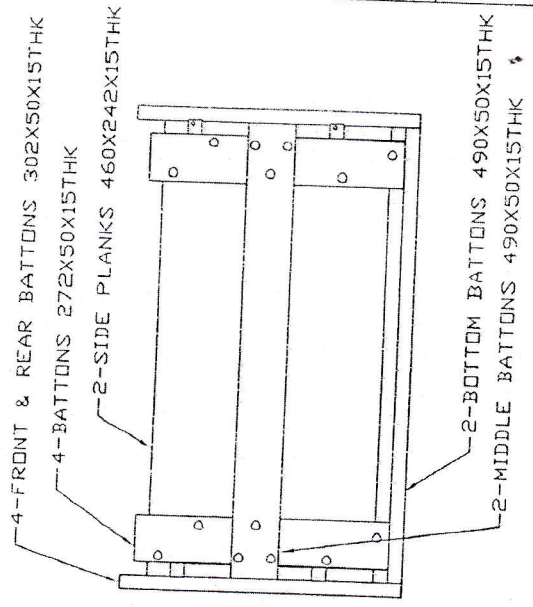
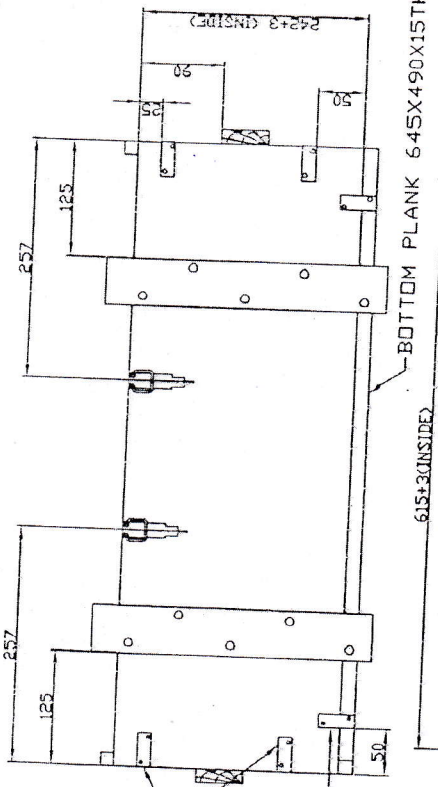


DRAWING CONVENTIONS CONFORM TO IS:696
DIMENSIONS ARE IN mm

STORAGE DIMENSIONS
LENGTH- 715
WIDTH- 530
HEIGHT- 310

PLATE ANGLE-8
DRG NO IA 793 SHT9 EACH
SECURED TO SIDE & FRONT/REAR
PLANK BY 4 WOOD SCREWS
NO 8X12 LONG TO IS:6760-1972

PLATE ANGLE-4
DRG NO IA 793 SHT9 EACH
SECURED TO FRONT/REAR & BOTTOM
PLANK BY 4 WOOD SCREWS
NO 8X12 LONG TO IS:6760-1972



CATCH LOCKING
CATCH 4 NOS
DRG NO IA-1053 SHT 1 (PART NO ISV 140A)
HASP DRG NO 1053 SHT 3 PART NO ISV 284
SECURED TO BODY BY 2 MS RIVETS
FLAT HD Ø4.76X20L TO IS:2155
OR ANY EQUIVALENT APPROVED LOCKING SYSTEM

NOTES :

ALL BATTENS ARE TO BE SECURED WITH NAILS
OF ROUND WIRE, MS PLAIN HD Ø2 X 50 LONG
TO SPEC IS:723-1972 & CLINCHED

ALL PLANKS ARE TO BE SECURED WITH SUITABLE
WIRE NAILS OF ROUND WIRE MS PLAIN HD
Ø2X30 LONG TO SPEC IS: 723-1972 & CLINCHED
ALL SCREWS, NAILS & RIVETS SHOULD BE
GALVANISED

SCREWS TO BE WOOD MS C'SK HEAD
TO SPEC IS:451-1972

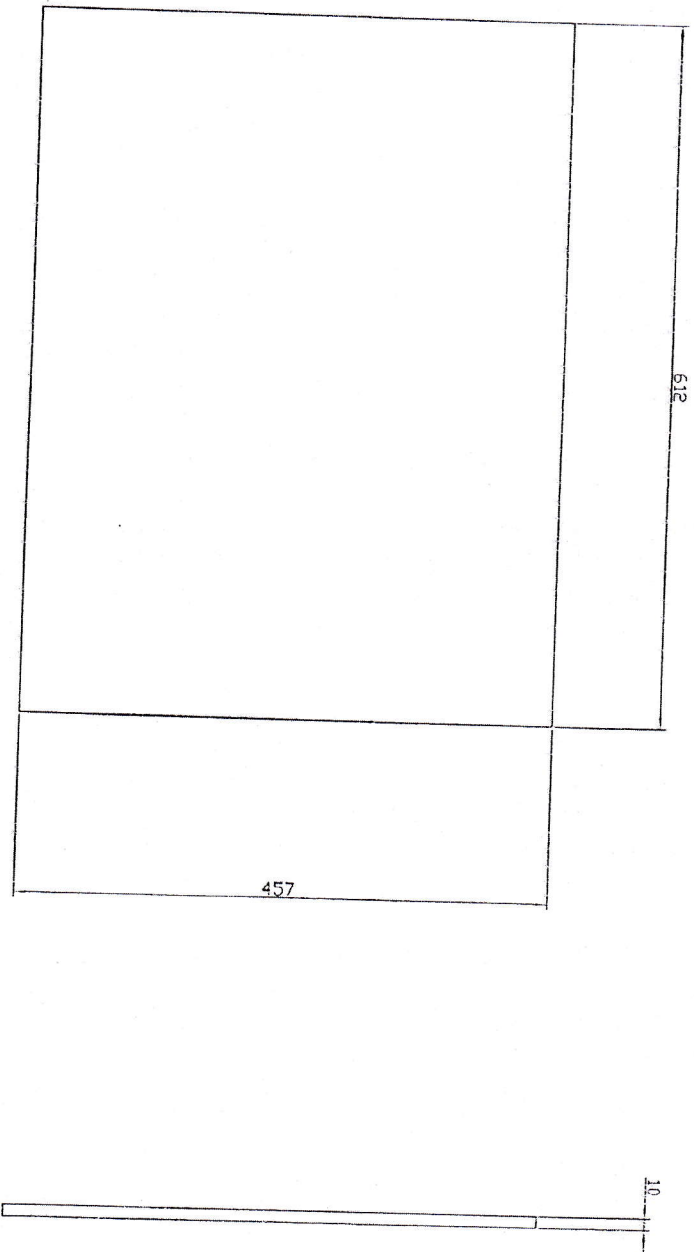
TECHNICAL REQUIREMENTS AS PER SPEC IA948 (a&d)

DRN. ALS	CHD.	TRD.	CDMP.	ASSY DRG HEMRL DRG HE/CAST 086 SHT1
CD/MAN/	DI/C	DO	EST/MSS.	DESIGN AUTHORITY
APPROVED	FOR DIRECTOR	DATE: 14-03-2008	HEMRL PUNE-411021	
MATL.	DEODAR/SAL/CHIP	TO SPEC IND/HE/083 (P) PROV		
PROTECTIVE FINISH	NA			
R NO	DATE	AUTHORITY	REVISION	ZONE
DRG SEALED				
AHSP	DI	SIG		

DRG NO.	HEMRL DRG HE/CAST 086
PART NO.	HEMRL DRG HE/CAST 086
D.S.CATNO.	
A.H.S.P.	

BOX FOR SHAPED CHARGES 90mm S/C (EMPTY)

ON LTR/D
DRAWING CONVENTIONS CONFORM TO ISPECIFICATION
DIMNS. ARE IN mm

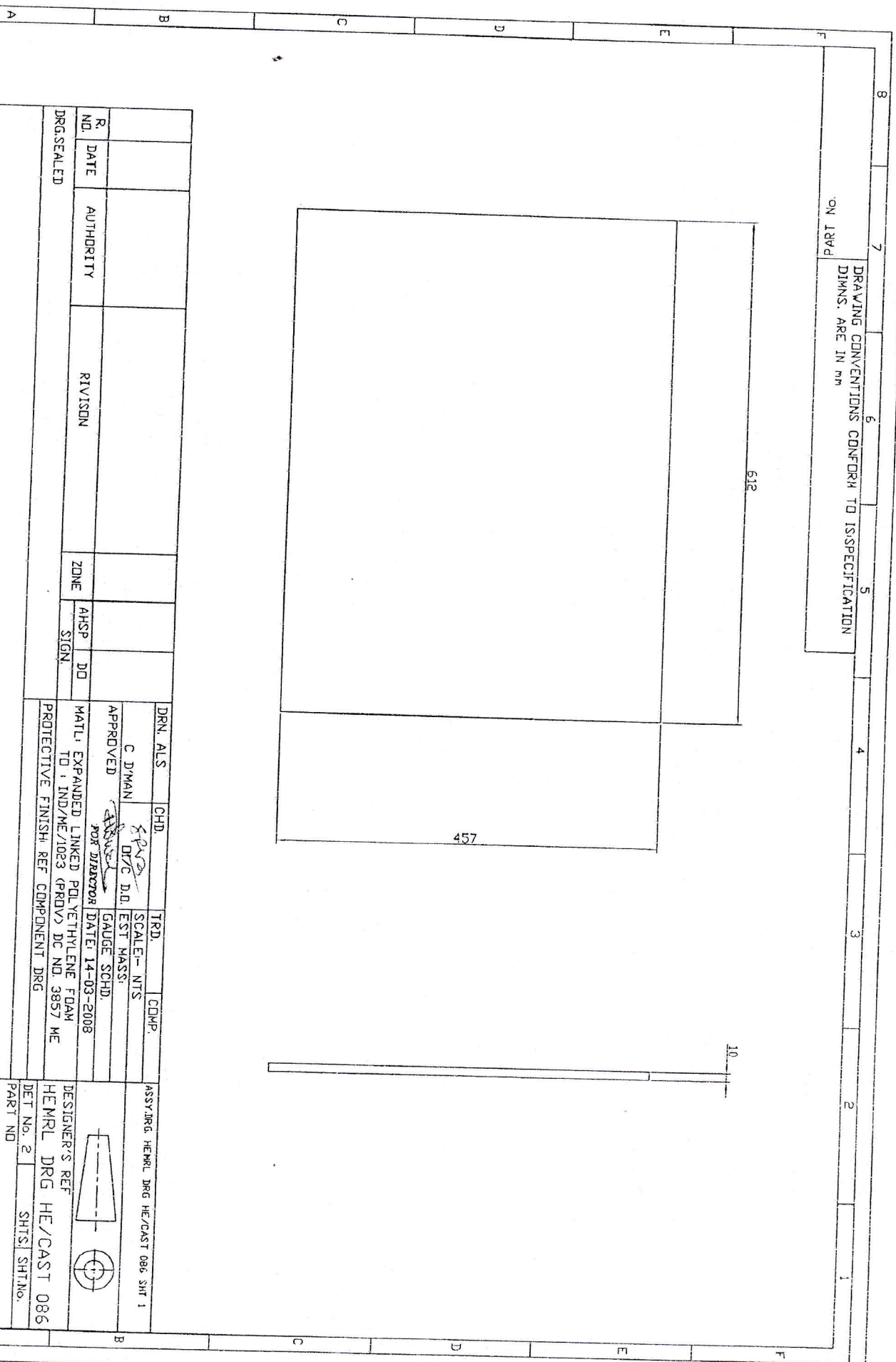


DRN. ALS	CHD.	TRD.	COMP.
C D/MAN	<i>SPD</i> D/C D.D.	SCALE- NTS	EST MASS:
APPROVED	<i>ASND</i> FOR DIRECTOR	GALGE SCHED.	DATE: 14-03-2008
MATL. EXPANDED LINKED POLYETHYLENE FOAM TO 1 IND/ME/1023 (PROV) DC NO. 3857 ME	PROJECTIVE FINISH. REF COMPONENT DRG		

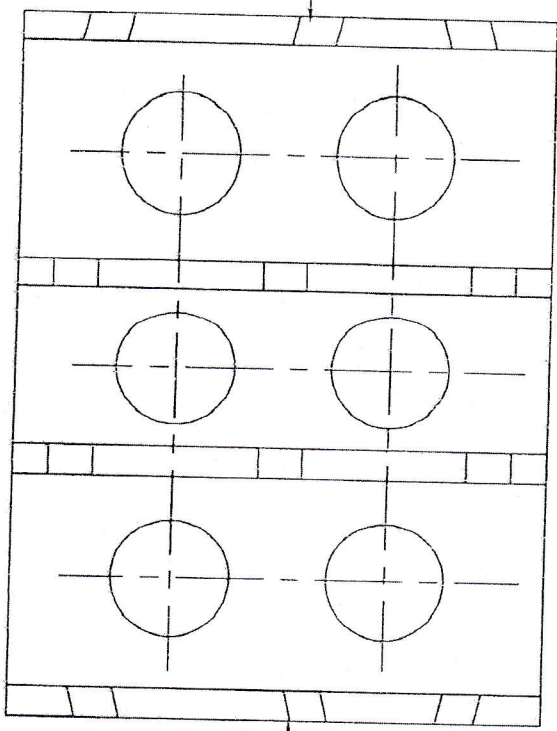
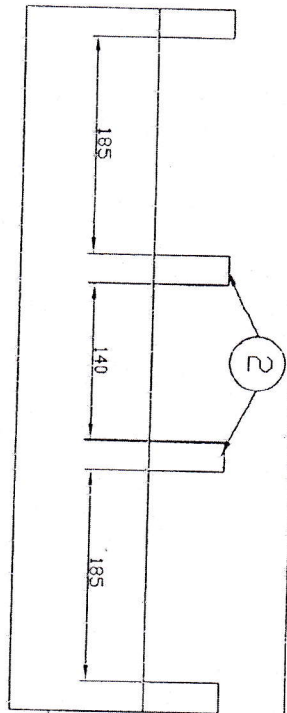
R. NO.	DATE	AUTHORITY	REVISION	ZONE	AHSP	DD

DESIGNER'S REF	HEMRL DRG HE/CAST 086
DET No. 2	SHTS: SH1.N0.
PART NO	
D.S.CAT.N0.	
AHSP.	

BOTTOM & TOP PACKING SHEET



ON LTRD
DRAWING CONVENTIONS CONFORM TO IS SPECIFICATION
DIMNS. ARE IN MM



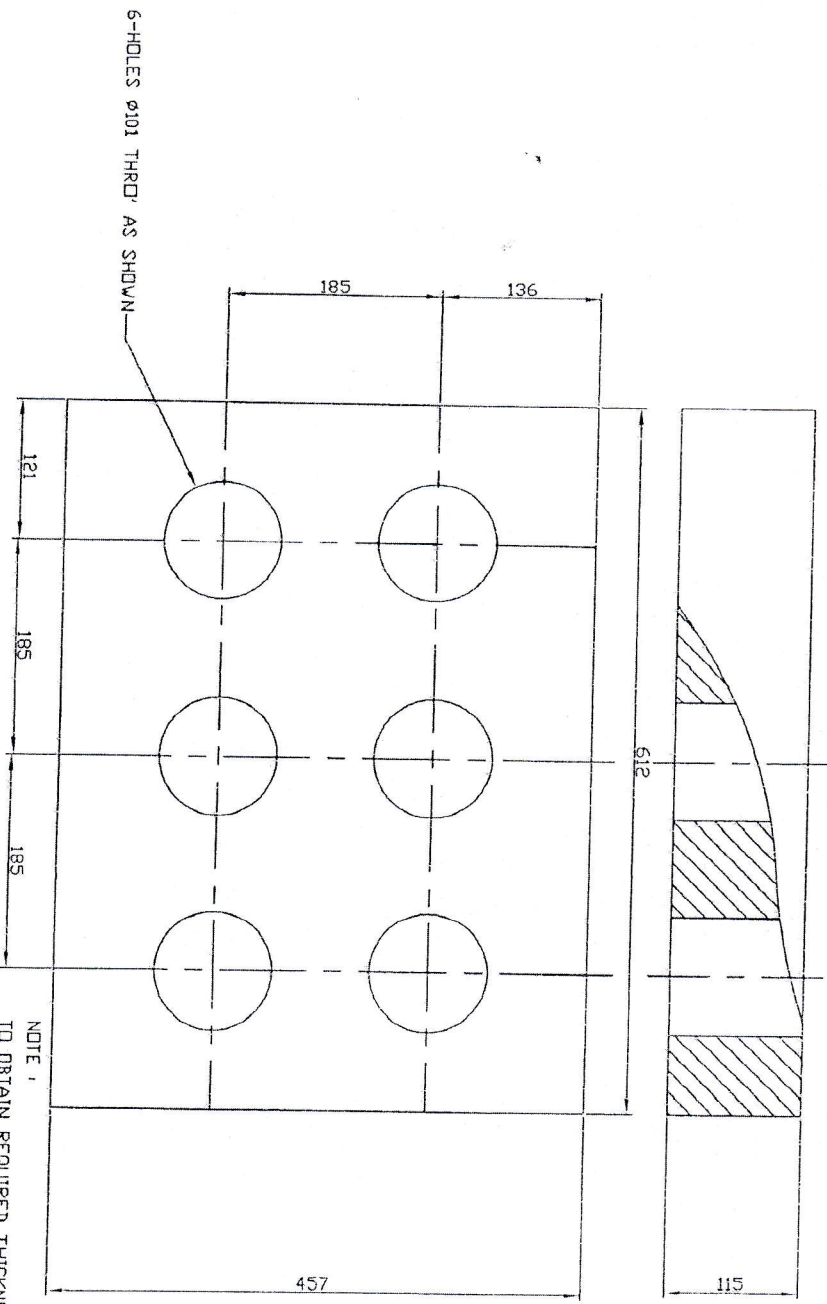
LIST OF COMPONENTS				
S.No.	DESCRIPTION	DRGNO.	DET.No.	NO.OFF
1	CHARGE HOLDING BLOCK	HEMRL DRG HE/CAST 086	4	1
2	LEG HOLDING STRIP I	HEMRL DRG HE/CAST 086	5	2
3	LEG HOLDING STRIP II	HEMRL DRG HE/CAST 086	6	1
4	LEG HOLDING STRIP III	HEMRL DRG HE/CAST 086	7	1

NOTE
ITEM NO 2,3&4 TO BE PASTED TO ITEM NO 1
USING FEVICOL SR 998 OR SUITABLE ADHESIVE MATERIAL.

DRN. ALS	CHD.	TRD.	CDMP.	ASSY.DRG. HEMRL DRG HE/CAST 086 SH 1
C D/WMAN	SPY D/C D.D.	SCALE- NTS		
APPROVED	<i>[Signature]</i>	EST MASS.		
	FOR DIRECTOR	GAUGE SCHD.		
		DATE 15-03-2008		
MATEL REF COMPONENT DRG				
PROTECTIVE FINISH				
DESIGNER'S REF				
HEMRL DRG HE/CAST 086				
PART NO				
DET No. 3				
SHTS/ SHITNo.				
DISCATNo.				
A.H.S.P.				

CHARGE HOLDING TRAY (SUBASSY)

8 7 6 5 4 3 2 1
 DRAWING CONVENTIONS CONFORM TO IISPECIFICATION
 DIMNS. ARE IN MM
 No. PART



NOTE:
 TO OBTAIN REQUIRED THICKNESS SHEETS TO BE PASTED
 TOGETHER USING FEVICOL SR 998 OR SUITABLE ADHESIVE MATERIAL

DRG. NO.	DATE	AUTHORITY	REVISION	ZONE	AHSP	DD	DRN. ALS	CHD.	TRD.	COMP.	ASSY. DRG.	HEMRL	DRG	HE/CAST	086/3
							C D/YMAN	S.P.A.D.	SCALE- NTS						
							APPROVED	DIV/C D.D.	EST MASS						
							FOR DIRECTOR	DATE: 14-03-2008	GAUGE SCHD.						
							MATL. EXPANDED LINKED POLYETHYLENE FOAM TO 1 IND/ME/1023 (PROVY) DC NO. 3857 ME								
							PROTECTIVE FINISH: REF COMPONENT DRG								

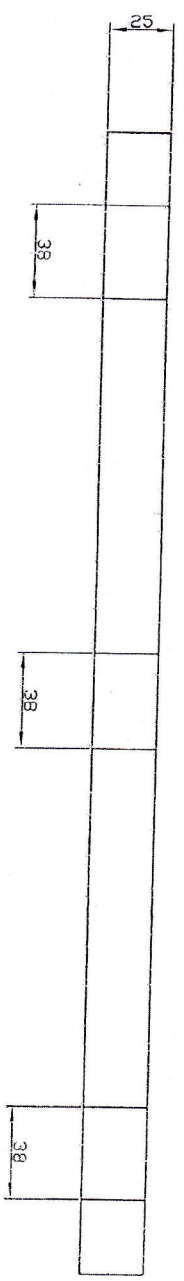
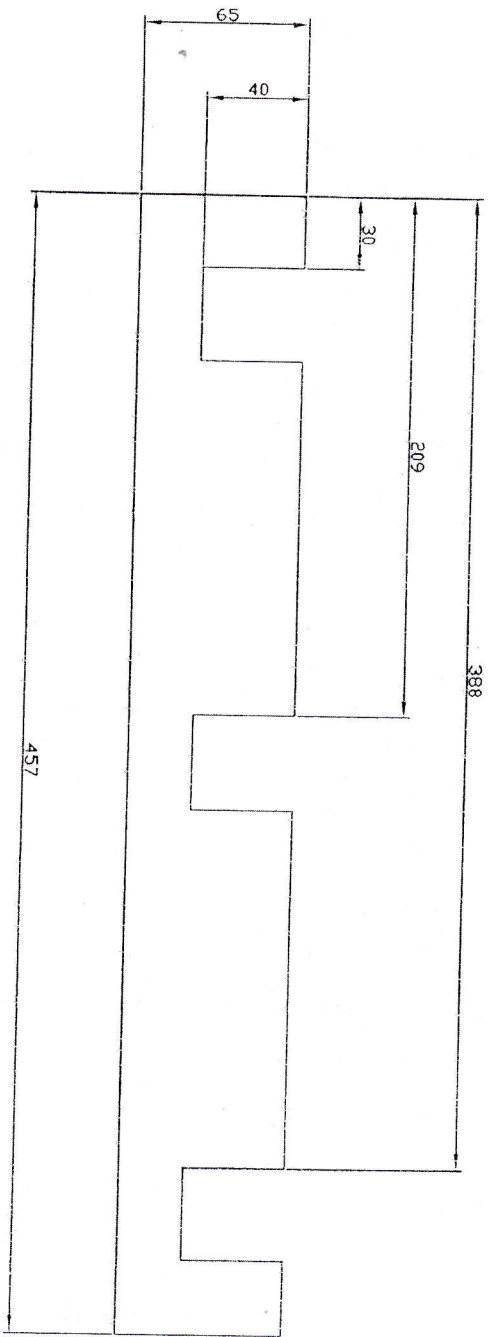
CHARGE HOLDING BLOCK

DESIGNER'S REF	HEMRL DRG HE/CAST 086
DET No. 4	SHTS. 3
PART NO	SHT. No.

D.S. CAT. No.

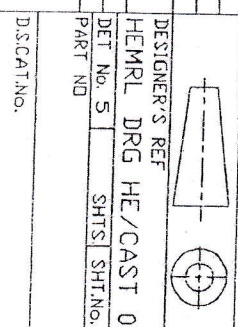
AHSP

NO. PART 7 5 4 3 2 1
 DRAWING CONVENTIONS CONFORM TO IS SPECIFICATION
 DIMNS. ARE IN MM

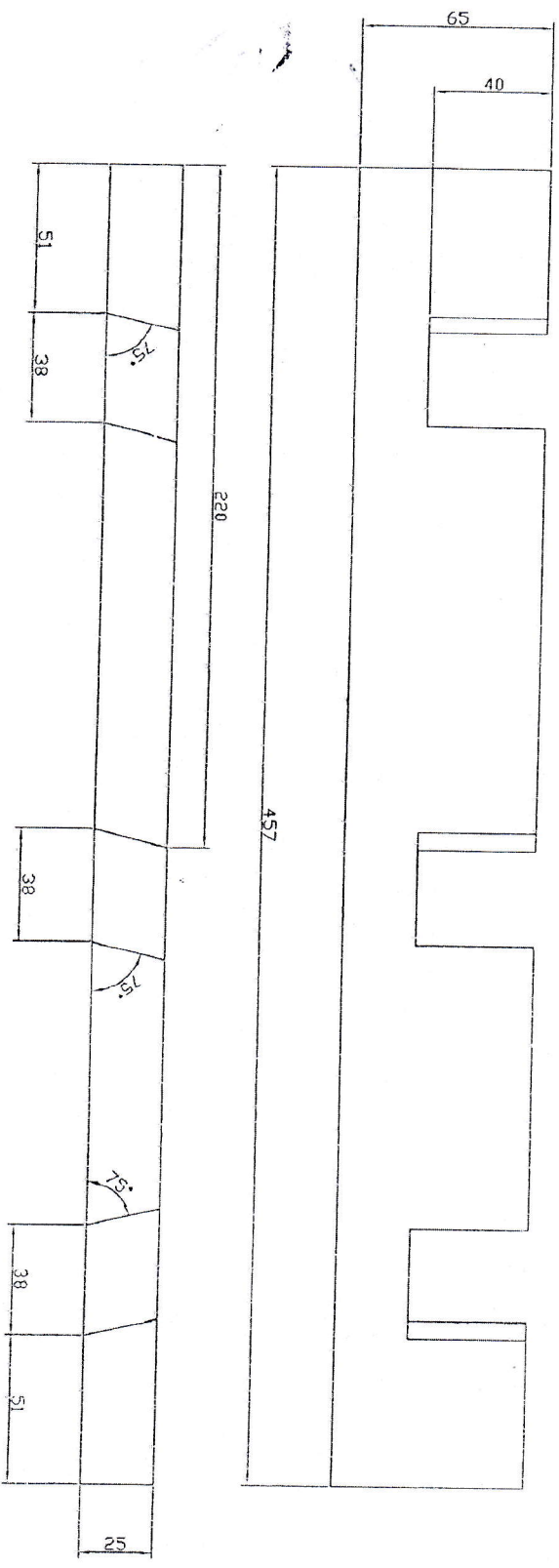


LEG HOLDING STRIP I

R. NO.	DATE	AUTHORITY	REVISION	ZONE	AHSP SIGN.	DD	DRN. ALS	CHD.	TRD.	SCALE	NTS	COMP.	ASSY. DRG.	HEMRL DRG	HE/CAST	086/3
							C. D'NMAN	SAVZ	DIV/C D.D.	EST MASS.						
APPROVED <i>[Signature]</i> FOR DIRECTOR DATE: 14-03-2008 GAUGE SCHED.																
MATERIAL: EXPANDED LINKED POLYETHYLENE FOAM TO I, IND/ME/1023 (PROV) DC NO. 3857 ME																
PROTECTIVE FINISH: REF COMPONENT DRG																
DESIGNER'S REF																
HEMRL DRG HE/CAST 086																
DET. No. 5 SHIS. SHIT. No.																
PART NO.																
D.SCAT. NO.																
A.H.S.P.																



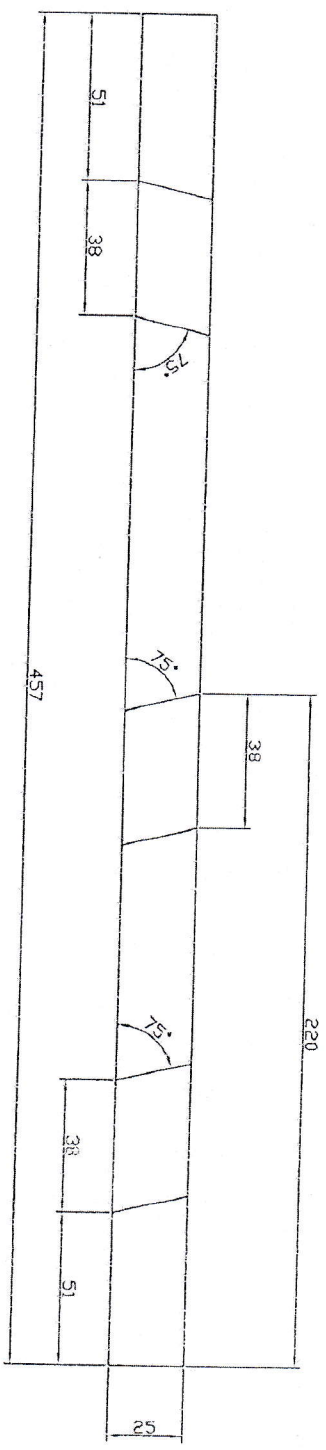
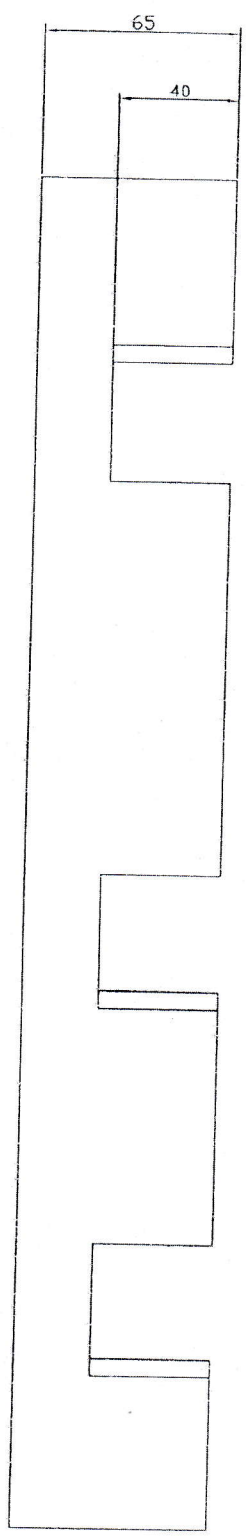
ON PART
DRAWING CONVENTIONS CONFORM TO I.S.SPECIFICATION
DIMNS. ARE IN MM



DRG. NO.	DATE	AUTHORITY	REVISION	ZONE	AHSP SIGN.	DD
DRG. SEALED						
DRN. ALS	CHD.	TRD.	SCALE	NTS	COMP.	ASSY. DRG. HEMRL DRG HE/CAST 086/3
APPROVED	C DYMAN	DIV/C D.O.	EST MASS.	Gauge	SOHD.	DATE 14-03-2008
MATERIAL: EXPANDED LINKED POLYETHYLENE FOAM TD 1 IND/ME/1023 (PROV) DC NO. 3857 MC PROTECTIVE FINISH. REF COMPONENT DRG.						
DESIGNER'S REF	HEMRL DRG HE/CAST 086	DET. NO.	6	SHTS.	SHT. NO.	
DISCAT. NO.						
AHSP						

LEG HOLDING STRIP II

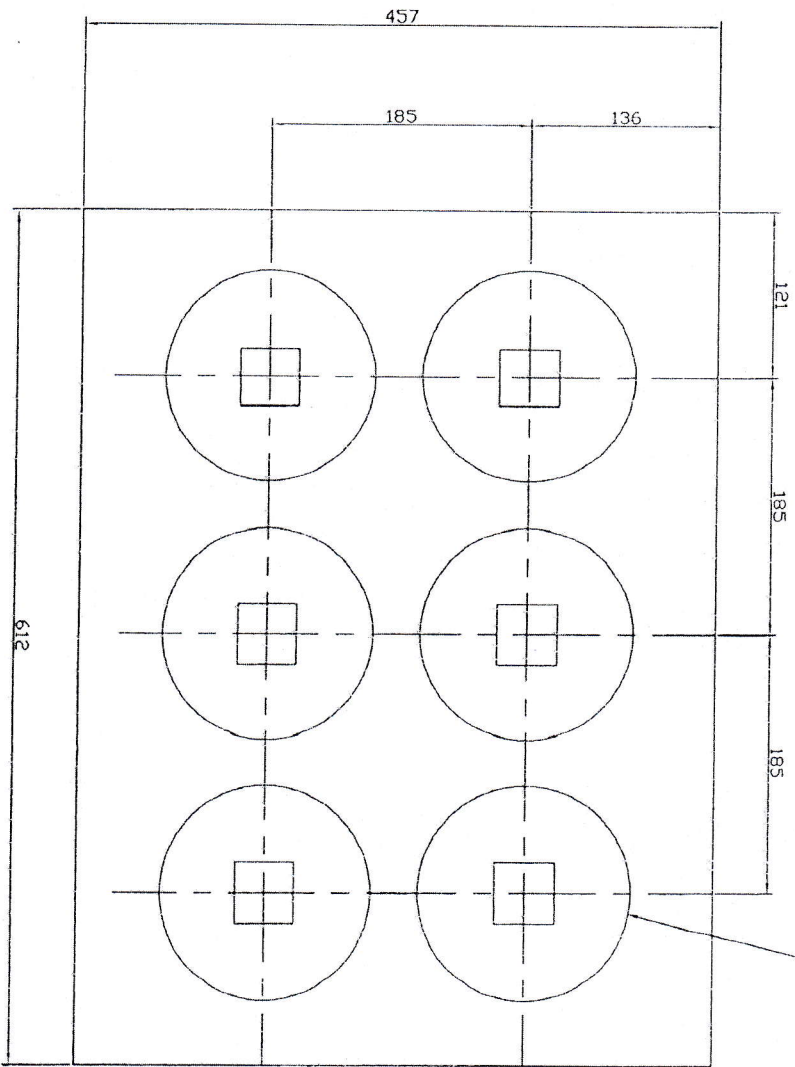
DRAWING CONVENTIONS CONFORM TO ICSPECIFICATION
 DIMS. ARE IN mm
 ON PART



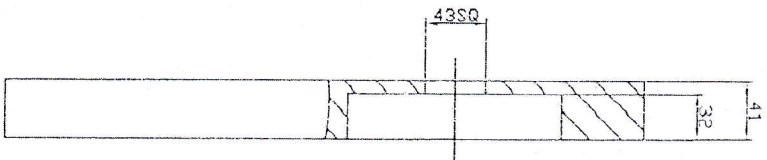
DRN. A.L.S.	CHD.	TRD.	SCALE- NTS	COMP.	ASSY.DRG. HEMRL DRG HE/CAST 086/V3
C D/MAN	SPANS AT/C D.D.	EST MASS	GAUGE SCHED.		
APPROVED	<i>[Signature]</i>	DATE: 17-03-2008			
MATERIAL: EXPANDED LINKED POLYETHYLENE FOAM TO : IND/ME/1023 (PRDV) DC NO 9857 ME PROTECTIVE FINISH REF COMPONENT DRG					
DESIGNER'S REF					
HEMRL DRG HE/CAST 086					
DET No. 7	SHTS. SHT.No.				
PART NO.					
DISCAT.No.					
AH.S.P.					

LEG HOLDING STRIP III

NO. PART 7 DRAWING CONVENTIONS CONFORM TO IS SPECIFICATION DIMS. ARE IN mm



6-HOLES Ø152 SPACED AS SHOWN



NOTE :
TO OBTAIN REQUIRED THICKNESS SHEETS TO BE PASTED TOGETHER USING FEVIGL SR 998 OR SUITABLE ADHESIVE MATERIAL

DRG. NO.	DATE	AUTHORITY	RIVISION	ZONE	AHSP SIGN.	DD	DRN. ALS	CHD	TRD.	COMP.	ASSY. JRG.	HEMRL DRG	HE/CAST	086	SHT 1	
							C DWAN	SP/DIC	SCALE: NTS							
APPROVED							FOR DIRECTOR	DATE: 14-03-2008	EST MASS:							
MATERIAL: EXPANDED LINKED POLYETHYLENE FOAM																
TD: IND/ME/1029 (PROV) DC NO: 3857 ME																
PROTECTIVE FINISH REF COMPONENT DRG																

SADDLE HOLDING TRAY

DESIGNER'S REF	HEMRL DRG HE/CAST 086
DET NO. 9	SHTS: SHT.Nb.
PART NO.	
D.S.CAT. No.	
AH.S.P.	

8 7 6 5 4 3 2 1

DRAWING CONVENTIONS CON
 DISPECIFICATION

ON LTRD DIMNS. ARE IN MM

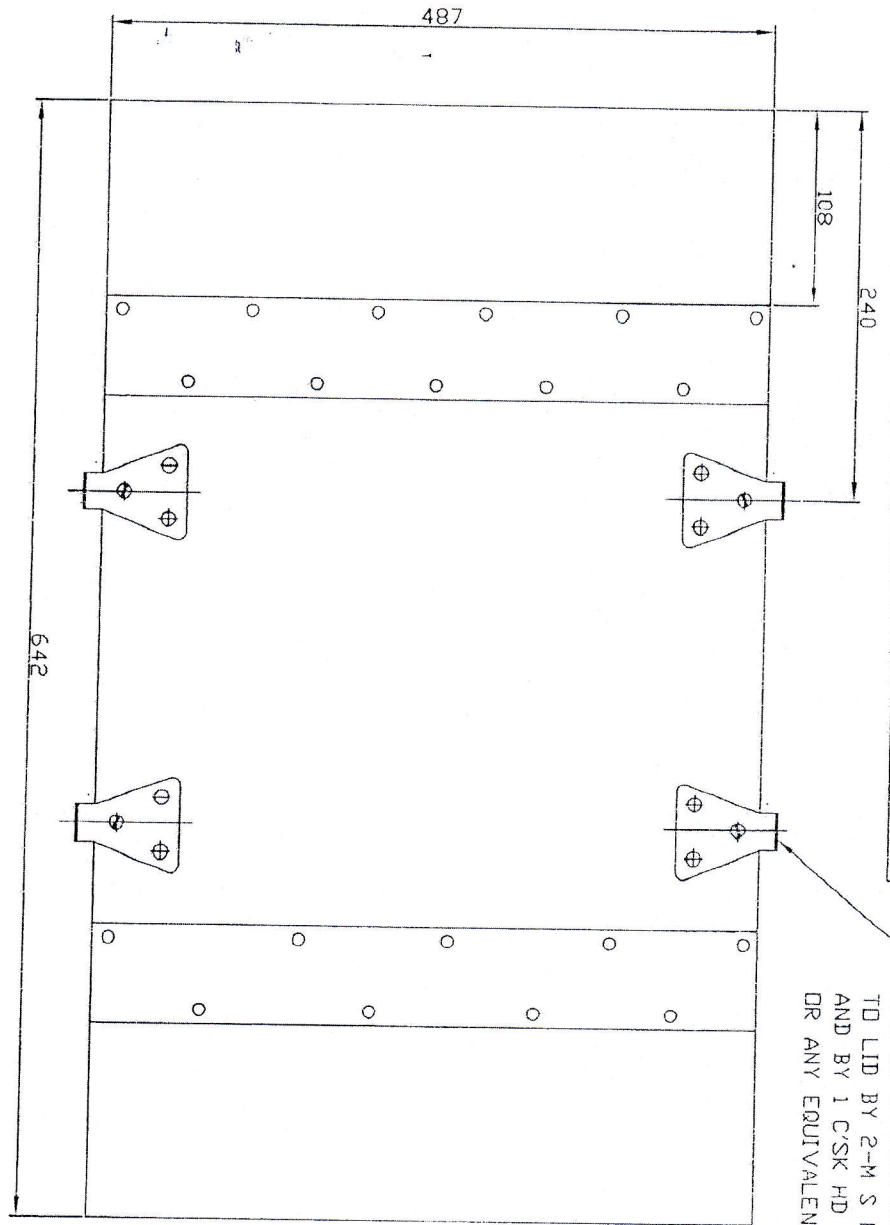


PLATE HOOK - 4NUS

DRG NO IA-1053 SHT 5 (PART NO ISV 286) SECURED TO LID BY 2-M S RIVETS FLAT HD ϕ 4.76X20L TO IS:2155 AND BY 1 C/SK HD WOOD SCREW NO 7X12L TO IS:6760-1972 OR ANY EQUIVALENT APPROVED LOCKING SYSTEM

2-BATTENS 487LX50WX15 THK ARE TO BE SECURED WITH NAILS OF MS WIRE PLAIN HD ϕ 2.5X50L TO IS:723 AND CLINCHED

ALL SCREWS, NAILS & RIVETS SHOULD BE GALVANISED
 NAILS TO BE ROUND WIRE, MS PLAIN HD TO SPEC IS:723-1972

TECHNICAL REQUIREMENT: AS PER SPEC IA948 (add)

DRN. ALS	CHD	TRD	COMP	ASSY. DRG. HEMRL DRG HE/CAST 086 SHT1
C DIMAN	SPAS B/C D/D	SCALE:- NTS		
APPROVED	<i>[Signature]</i>	EST MASS		
	FOR DESIGNER	GAUGE SCHED.		
	DATE: 15-03-2008			
MATL. DECOR/SAL/CHIR				DESIGNER'S REF
TD SPEC IND/ME/833 (P) PRDV				HEMRL DRG HE/CAST 086
PROTECTIVE FINISH: NA				DET. NO. 10
				SHTS. SHTING.
				PART NO
				D.S. CAT. NO.
				AH.S.P.

LID