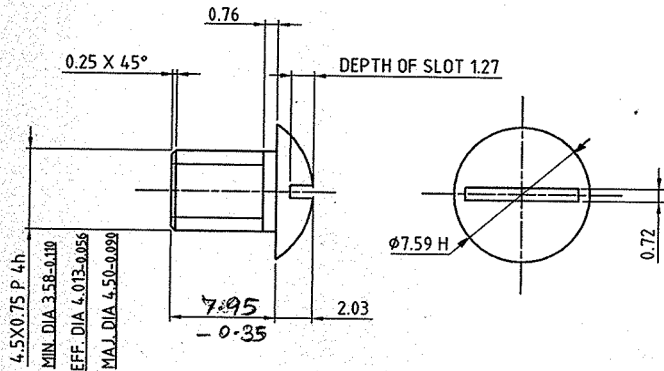


DRG.NO. 29P 0057*2

DIMENSIONS ARE IN mm.
 UNTOLERATED DIMNS. AS PER IS : 2102 (MED)
 MARK DRAWING No.




NOTE:-

THE HEAD OF THE SCREW TO BE TURNED FROM THE WIRE OR BAR AND NOT SPUN OR SET UP HEAD OF SCREW TO BE POLISHED BEFORE HARDENING OR PHOSPHATING.

MATERIAL:- STEEL BS 970 PT.1-1983 SEC.4 GR.045 M-10
 (CASE HARDENING)

(HARDENESS:- 300-400 H.V.) EXPERIMENTAL.

PROTECTIVE FINISH: PHOSPHATE TO SPECN.:
 JSS:0465:01;1988 CLASS-I, OIL FINISH.

1	SCREW,SPRING,BOLT LOCKING	1	AS ABOVE		
PART NO.	DESCRIPTIONS	NO OFF	MATERIAL	TREATMENT	REMARKS
①	SIGNATURE & DATE.		SUB: SCREW,SPRING,BOLT LOCKING		SCALE N.T.S
TRACED			FOR:		STORE DRG.NO.
DRAWN	<i>S. P. Subramani</i> 05/11/09		OF: .315" SPORTING RIFLE		SP 57
CHECKED	<i>S. P. Subramani</i>		DES. REF. NO. DS. CAT. NO. 5305-005014 (SP.57)		OPERATION NO.
OIC/D&DO			DRG. No.: 29P 0057*2		---
OFFICER/PRODN.			 ORDNANCE FACTORY TIRUCHIRAPPALLI-16.		SHEETS: 1
OFFICER/D&DO					SHEET No.: 1
AMENDMENTS	SIG. & DATE	UP DATED & APPROVED ON			
		05-11-09			

D.A.NO.8996/16/D00/02
 DATED: 05-11-09
 D.A.NO.8996/16/D00/22
 DATED: 20.12.05

Sd/-