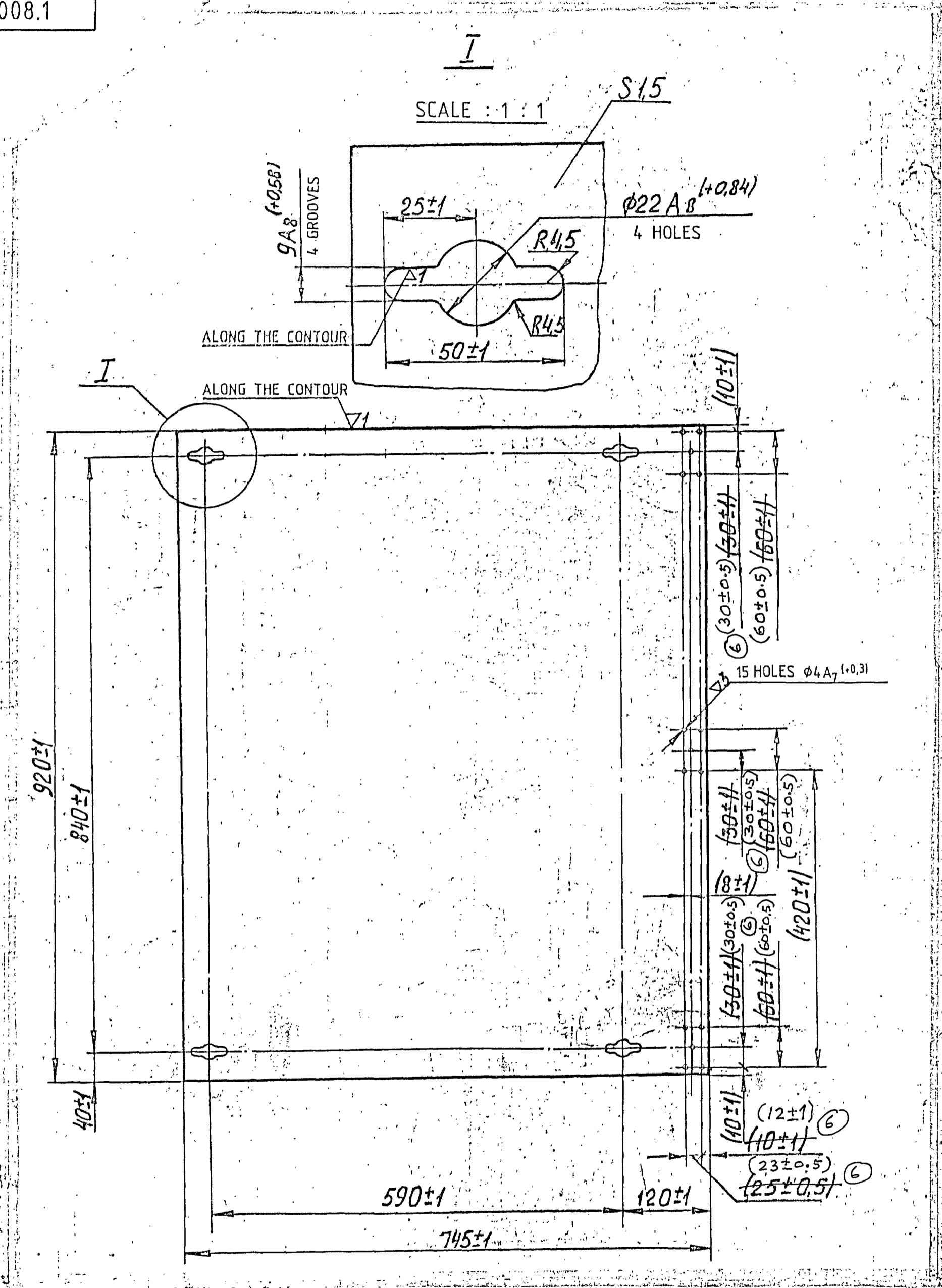


DRAWING NUMBER
B.MTO 1.41.008.1



PILOT SAMPLE SHOULD BE APPROVED BY A H S P BEFORE BULK PRODUCTION.

EST WT 2,75 Kg	TO BE STAMPED OR MARKED WHERE INDICATED THUS # (LETTERS)
-------------------	--

ALL SHARP EDGES AND CORNERS TO BE REMOVED UNLESS OTHERWISE STATED MACHINED CORNERS TO HAVE R OUTSIDE R INSIDE EQUIVALENT CHAMFERS ARE PERMISSIBLE.

- CAN BE MANUFACTURED FROM PLATE AMΓ-6M-1.5.
- DIMENSIONS IN BRACKETS ARE TO BE CARRIED OUT AS PER DRAWING MTO 1 41 002 Cb TOGETHER WITH COMPONENT β-MTO 1 41 009 AND β-MTO 1 41 010.

EXPLANATORY NOTE :-

- (a) REFERENCE MATERIAL QUOTED :-
ALUMINIUM ALLOY SHEET 1,5 mm THICK WITH TECHNOLOGICAL CLADDING ANNEALED TO GRADE AMΓ 6-6M GOST 21631-76.
- (b) REFERENCE NOTE 1 ON ALTERNATIVE MATERIAL :-
ALUMINIUM ALLOY SHEET ANNEALED TO GRADE AMΓ 6M GOST 21631-76 AND MANUFACTURED IN ACCORDANCE WITH GOST 4784-74.
- (a) CHEMICAL COMPOSITION :- AS PER GRADE AMΓ 6G GOST 21631-76.

GRADE OF ALLOY TO BE CLADD	CHEMICAL COMPOSITION OF CLADDING MATERIAL %											
	ALLOYING ELEMENTS						ADMIXTURES MAXIMUM					
	Al	Zn	Fe	Si	Cu	Mn	Zn	Ti	Mg	OTHER ADMIXTURES EACH SEPERATELY	SUM TOTAL	SUM TOTAL OF PERMISSIBLE ADMIXTURES
AMΓ 6G	99,30 MIN	—	0,30	0,30	0,02	0,025	0,10	0,15	0,05	0,02	—	0,70

- (b) CHEMICAL COMPOSITION :- AS PER GRADE AMΓ 6 GOST 4784-74.

ALLOYING CONSTITUENTS %											
Al	Cu	Mg	Mn	Ni	Fe	Si	Zn	Ti	Cr	Zr	BERILLIUM
BASE CONSTITUENT	—	5,80-6,80	0,50-0,80	—	—	—	—	0,02-0,10	—	—	0,0002-0,005

IMPURITIES MAXIMUM										
Fe	Si	Cu	Mn	Ni	Zn	Ti	Mg	Cr	OTHER IMPURITIES EACH TOTAL	
0,40	0,40	0,10	—	—	0,2	—	—	—	0,05	0,10

- (c) MECHANICAL PROPERTIES :- FOR GRADES AMΓ 6-6M, AMΓ 6M TO GOST 21631-76.

GRADE OF ALLOY	TENSILE STRENGTH	0,2 % PROOF STRESS	ELONGATION
	Kgf/mm ²	Kgf/mm ²	l=11,3 F %
AMΓ 6-6M AMΓ 6M	32,0	16,0	15,0

DRN	CHD	TCD	APPD	DATE	SCALE	DIMENSIONS IN mm	TOLERANCE ON DIMNS UNLESS OTHERWISE STATED IS: 2102-69	ALL THREADS TO CONFORM TO	MATERIAL :- PLATE AMΓ 6-6M-1.5 GOST 21631-76.	USED ON :- MTO 1 41 002 Cb.	CONTROLLERATE OF INSPECTION (HEAVY VEHICLES) AVADI	TITLE GUARD	D S CAT NUMBER	DRAWING NUMBER B.MTO 1.41.008.1
				11-04-98	1:5									
6	14.10.88	AMDT. LIST 6, PART II, BOOK-11												
ISSUE	DATE	NATURE OF AMENDMENTS												

COMMON TO BLT
DRG. CREATED BASED ON RUSSIAN ORIGINAL ISSUE-5

F-186/80

SIZE A2

1. **Introduction**

The purpose of this study is to investigate the effects of a new educational program on student performance.

The study was conducted over a period of six months, involving a sample of 100 students.

The results of the study indicate a significant improvement in student performance.

The findings suggest that the new educational program is effective in enhancing learning outcomes.

Further research is needed to explore the long-term effects of the program.

The study has several limitations, including a relatively small sample size.

Despite these limitations, the study provides valuable insights into the effectiveness of the program.

The results of this study have important implications for educational practice.

The study concludes that the new educational program is a promising approach to improve student performance.

The authors would like to thank the funding agency for their support.

The authors also thank the participants for their contribution to the study.

The authors declare no conflict of interest.

The authors have no other relevant declarations to make.

The authors have no other relevant declarations to make.

The authors have no other relevant declarations to make.

The authors have no other relevant declarations to make.

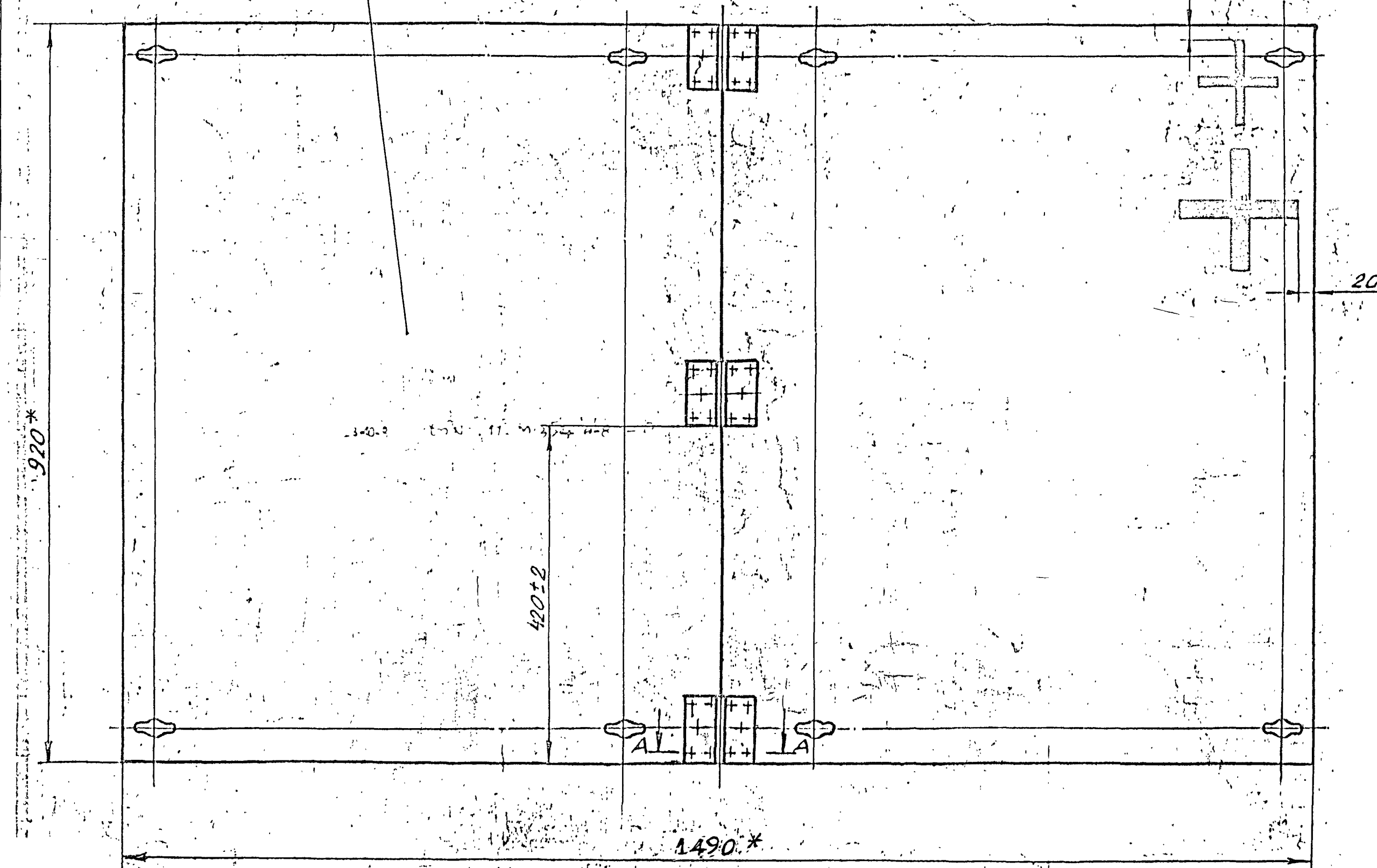
The authors have no other relevant declarations to make.

The authors have no other relevant declarations to make.

The authors have no other relevant declarations to make.

DRAWING NUMBER
MTO.1.41.002 Cb

REST OF THE SIGNS ARE NOT SHOWN



- ④ 1. GUARD MUST BE FOLDED UP FREELY WITHOUT JAMMING IN RINGS
PLAY IN HINGES IS NOT ALLOWED. HINGES MAY BE ADJUSTED.
- ⑥ 2. HOLES FOR HINGES ARE TO BE DRILLED IN ACCORDANCE WITH
COMPONENT DRAWINGS ~~8~~-MTO 1 41 009 AND ~~8~~-MTO 1 41 010.
3. WIRE No 5 AFTER FIXING IN HINGES No 2 AND 3 SHOULD BE RIVETED
OVER ON BOTH THE ENDS, AS PROVIDED IN POINT 1 OF TECHNICAL
REQUIREMENTS.
- ⑦ 4. PAINT COATING TO COMPLY WITH 175 TY 2-2.
5. THE ALIGNMENT CO-ORDINATES SHOULD BE MARKED WITH ENAMEL ПФ-223
BLACK GOST 14923-69. INSCRIPTION SHOULD BE MADE WITH TYPE П0-18
GOST 2930-62 IN ACCORDANCE WITH THE CO-ORDINATE ALIGNMENT
DIAGRAM OF UNITS, ON THE TURRET AT 25m, MARKING OF SIGN "09-3TK"
DIMENSION LINES AND DIMENSIONS SHOULD NOT BE MARKED.

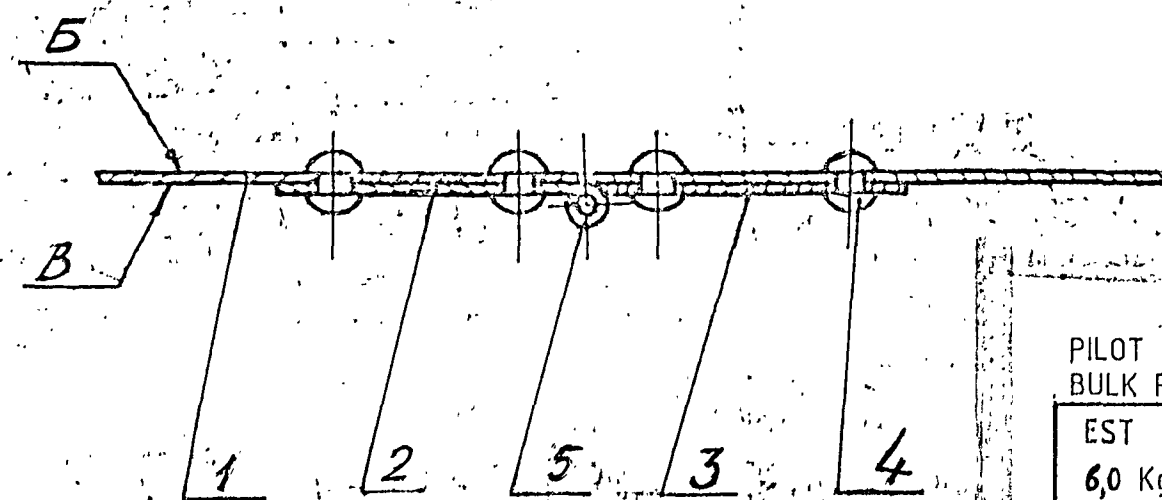
*DIMENSIONS FOR REFERENCE.

EXPLANATORY NOTE:-

7. REFERENCE NOTE 4 ON PAINTING:-
TO BE PAINTED IN ACCORDANCE WITH IND/VEH/1001 (LATEST).

4. COATING OF SURFACE Б: PRIMER БЛ - 02, PHOSPHATING YELLOW PRIMER
AK - 070, KHAKI ENAMEL XB - 518.
- ⑦ SURFACE А:
YELLOW PRIMER AK - 070, WHITE ENAMEL ПФ - 115.
REQUIREMENTS AS PER 520 Ty5.

A-A
SCALE 1 : 1



PILOT SAMPLE SHOULD BE APPROVED BY A H S P BEFORE
BULK PRODUCTION

EST WT 6,0 Kg	TO BE STAMPED OR MARKED WHERE INDICATED THUS :H: (LETTERS)
ALL SHARP EDGES AND CORNERS TO BE REMOVED UNLESS OTHERWISE STATED MACHINED CORNERS TO HAVE R OUT- SIDE R INSIDE EQUIVALENT CHAMFERS ARE PERMISSIBLE.	

DRN	CHD	TED	APPD	DATE	SCALE	DIMENSIONS IN mm	TOLERANCE ON DIMNS UNLESS OTHERWISE STATED IS: 2102-69	D S CAT NUMBER	DRAWING NUMBER	
				04-04-88	1 : 5				MTO.1.41.002 Cb	
7	27.7.90	Notn.No:172M. 655 "A"-88IAL.112								
6	23.10.89	Notn.No:172M.222'A'-87-A.9/3								
5	14.10.88	ITEM LIST AMENDED								
4	14.10.88	RMDT.LIST 6, PART II, BOOK-11								
ISSUE	DATE	NATURE OF AMENDMENTS								
						TITLE	PANEL ASSY.			
							USED ON 172.95.068 Cb			
						CONTROLLERATE OF INSPECTION (HEAVY VEHICLES AVADI)				

DRG.CREATED BASED ON RUSSIAN ORIGINAL ISSUE-3.

COMMON TO BLT

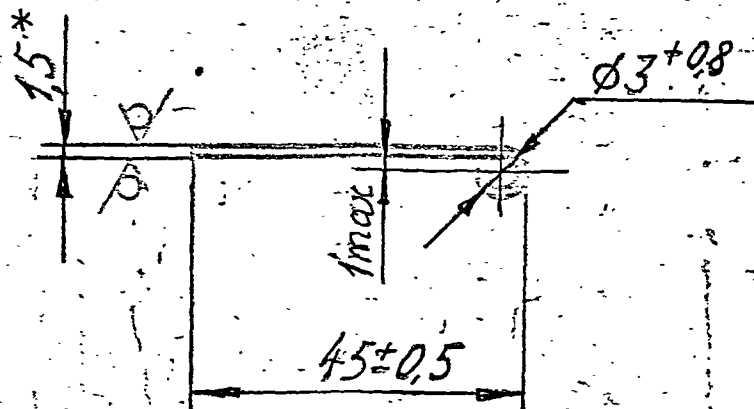
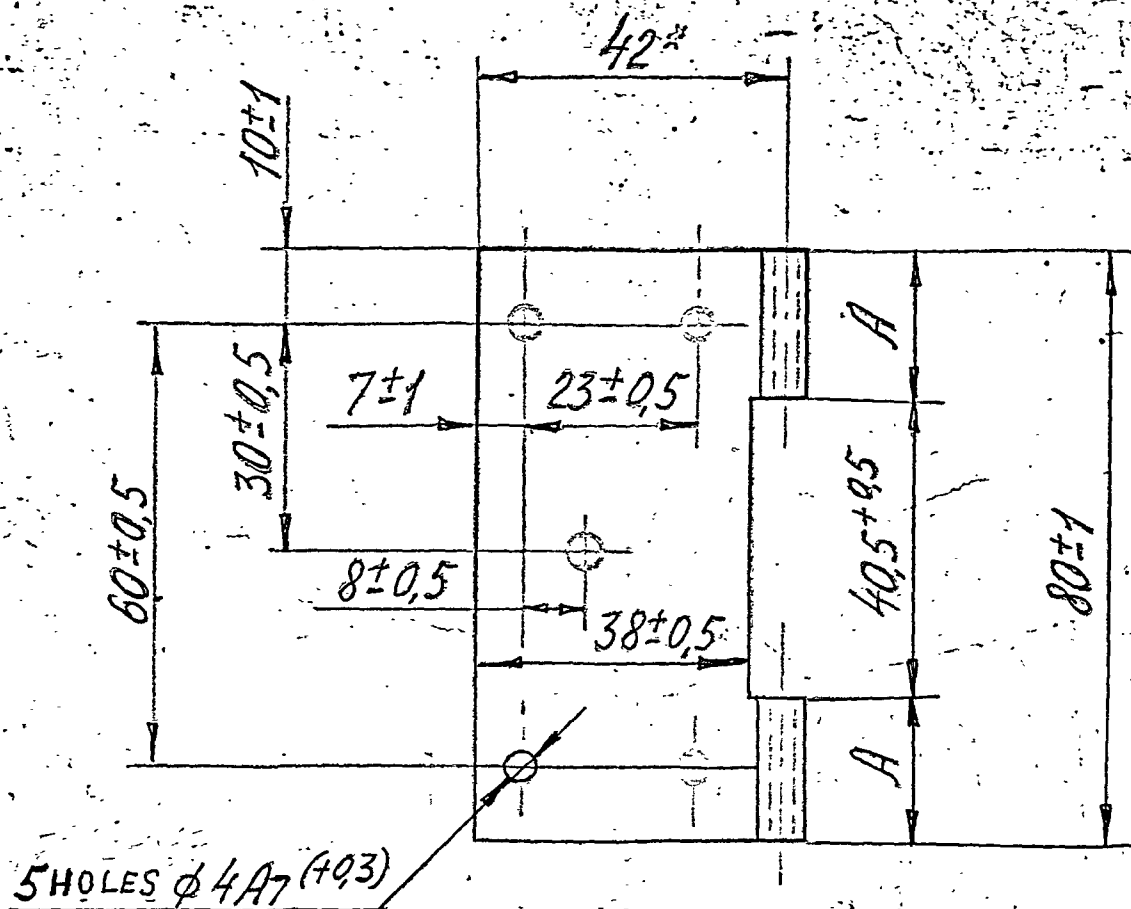
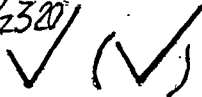
F-186
70

SIZE A2



MT0.1.41.009

Rz320



1. SUBSTITUTE MATERIAL :

SHEET

1.5 GOST 19904 - 74

4 - II - 20 GOST 16523 - 70

2. DIFFERENCE OF DIMENSIONS "A" SHOULD NOT EXCEED 1 MM.

3. ADJUSTING OF HINGE TO SUIT DIMENSION 40.5 +0.5. DURING MOUNTING AS PER THE ASSEMBLY DRAWING IS ALLOWED.

4.* DIMENSIONS FOR REFERENCE.

PILOT SAMPLE SHOULD BE APPROVED BY A K S P BEFORE BULK PRODUCTION

		EST. MASS. 0,04 Kg.	TO BE STAMPED OR MARKED WHERE INDICATED THIS #
		LETTERS 1	
		ALL SHARP EDGES AND CORNERS TO BE REMOVED UNLESS OTHERWISE STATED MACHINED CORNERS TO HAVE R OUTSIDE R INSIDE EQUIVALENT CHAMFERS ARE PERMISSIBLE	
ISSUE	DATE	NATURE OF AMENDMENTS	
DRN <i>Q. Vener</i>		SCALE : 1 : 1	MATERIAL : SHEET 1.5 GOST 19904-74 4-II-15 GOST 16523-70
DD <i>Q. Vener</i>		DIMENSIONS IN mm	USED ON : MT0.1.41.0'2cb
TD <i>R. Chudov</i>		TOLERANCE ON DIMS UNLESS OTHERWISE STATED	CONTROLLERATE OF QUALITY ASSURANCE (HEAVY VEHICLES) AVAD
APPD <i>Q. Vener</i>			TITLE : HINGE
DATE 13,10,88		ALL THREADS TO CONFORM TO	D S CAT <i>Q. Vener</i> DRAWING NUMBER MT0.1.41.009

COMMON TO BLT

REPLACES B-MTO 1.41.009, VIDE AMDT LIST 6, PART II BOOK-11

DRG. CREATED BASED ON RUSSIAN ORIGINAL, ISSUE-NIL

2105 01/01 27/1/83

F-17B
59

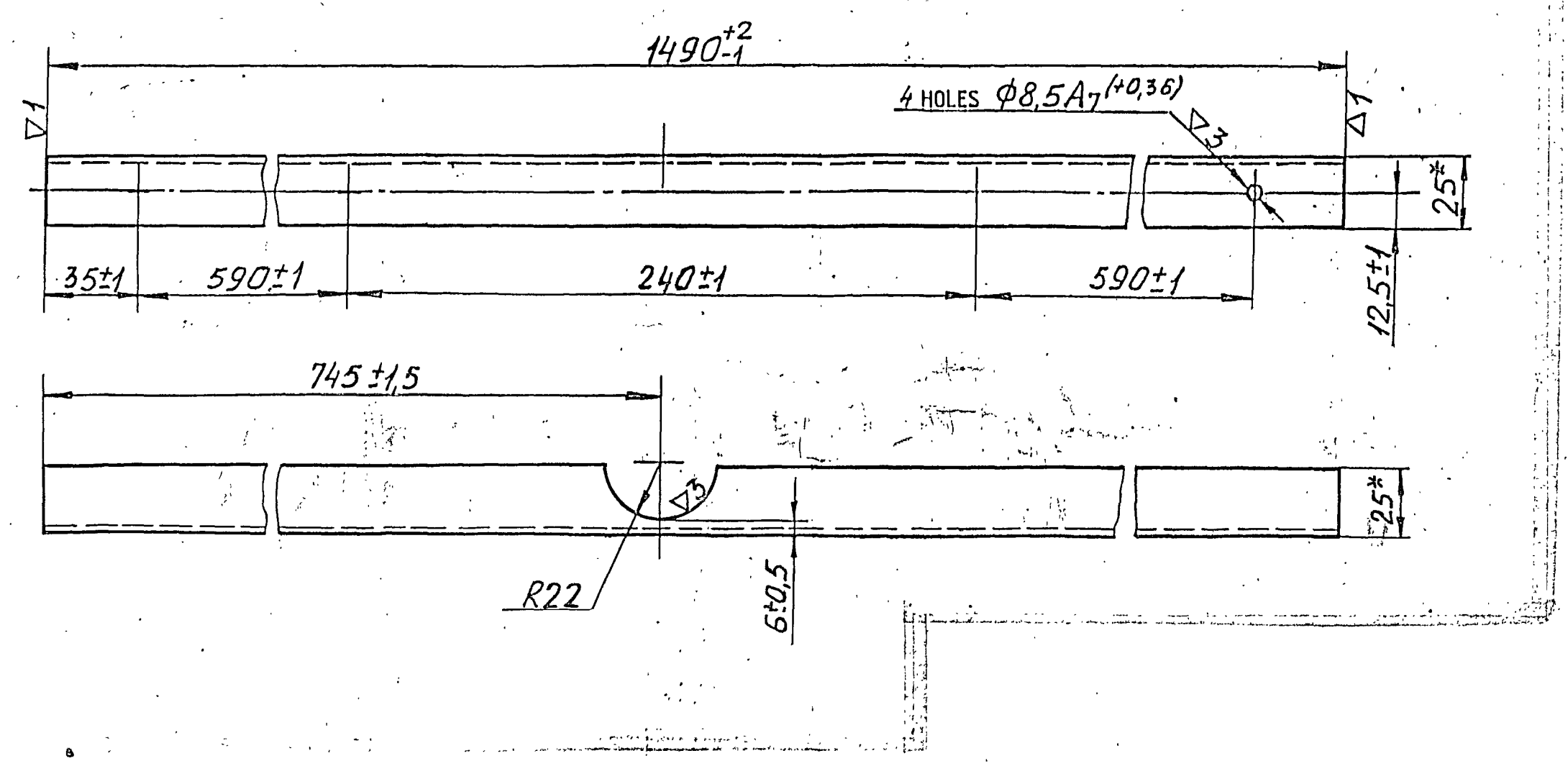
I





DRAWING NUMBER
B-MTO 1 41 003

2



1. COMPONENT MAY BE MANUFACTURED FROM EQUAL ANGLE PIECE 25 x 25 x 3 GOST 8509-72.
2. CAN BE MANUFACTURED FROM STEEL 15 AND 20 GOST 1050-60 OPEN HEARTH.
3. *DIMENSIONS FOR REFERENCE.

COMMON TO BLT

PILOT SAMPLE SHOULD BE APPROVED BY A H S P BEFORE BULK PRODUCTION

EST WT 1.62 Kg	TO BE STAMPED OR MARKED WHERE INDICATED THUS # (LETTERS)
-------------------	--

ALL SHARP EDGES AND CORNERS TO BE REMOVED UNLESS OTHERWISE STATED MACHINED CORNERS TO HAVE R OUT-SIDE R INSIDE EQUIVALENT CHAMFERS ARE PERMISSIBLE.

DRN	<i>Ch...</i>	MATERIAL :	USED ON:
CHD	<i>Ch...</i>	B STEEL 3C.P.2	B-MTO 1'41-004 cb
TCD	<i>Ch...</i>	GOST 380-71 OPEN HEARTH.	
APPD	<i>Ch...</i>	CONTROLLERATE OF INSPECTION (HEAVY VEHICLES AVADI)	
DATE	11-2-88		
SCALE	1:2		
DIMENSIONS IN mm			
TOLERANCE ON DIMNS UNLESS OTHERWISE STATED IS: 2102-69			
ALL THREADS TO CONFORM TO			
ISSUE	DATE	D S CAT NUMBER	DRAWING NUMBER
			B-MTO 1 41 003

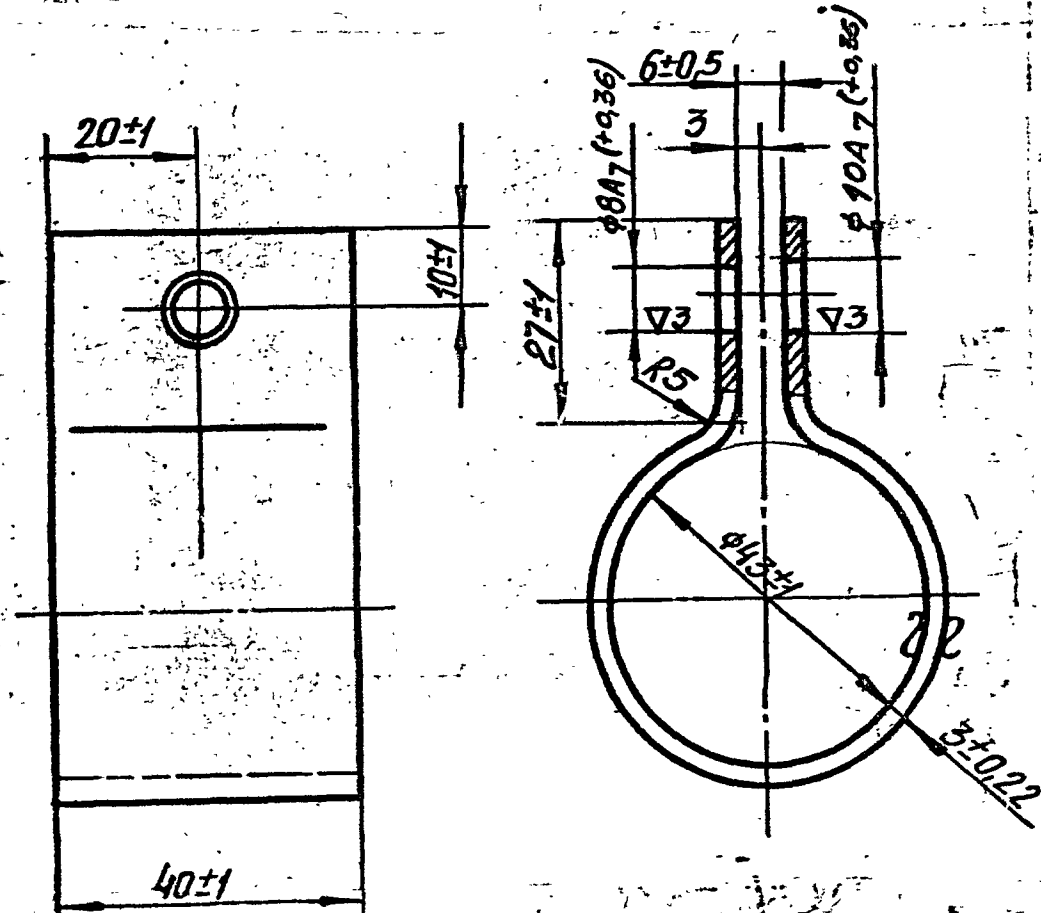
F.186
76

SIZE A2



DRAWING NUMBER
B MTO 1 41 004

▽1 (▽)



CAN BE MANUFACTURED FROM STEEL GRADE 20-4-II GOST 16523-70
OPEN HEARTH.

PILOT SAMPLE SHOULD BE APPROVED BY A H S P BEFORE BULK PRODUCTION.

COMMON TO BLT

F-186
77

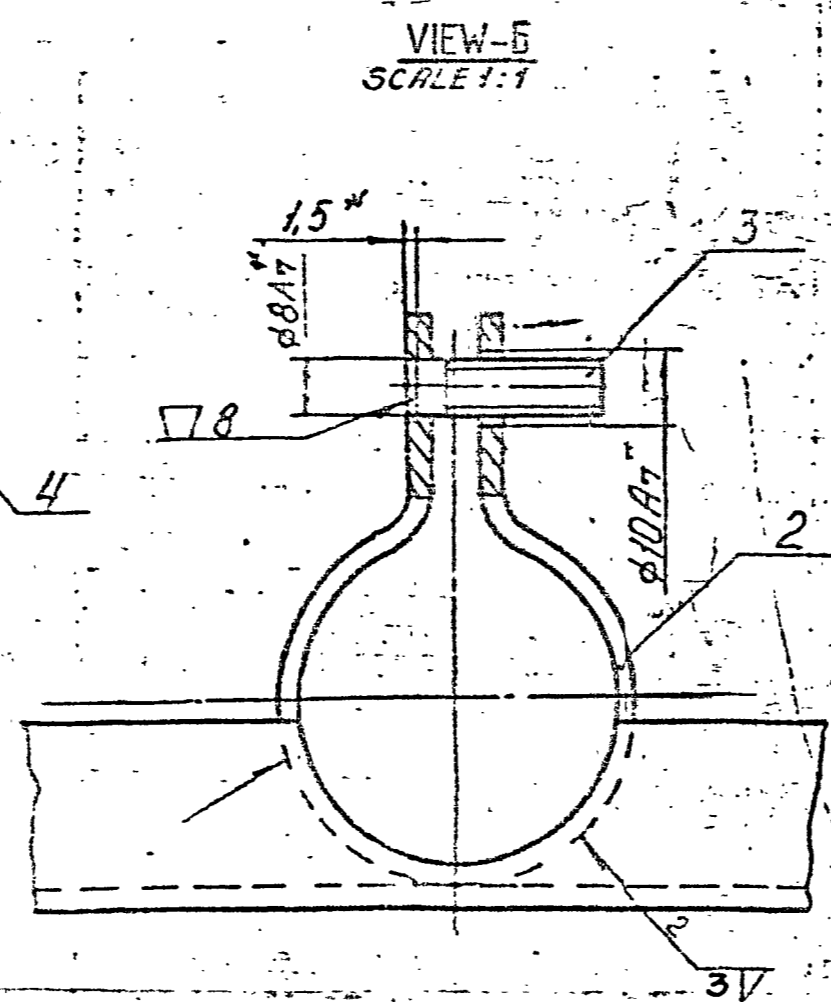
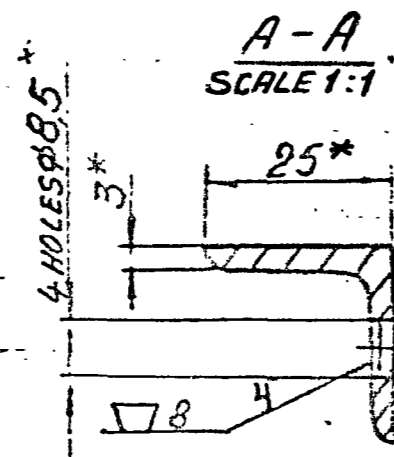
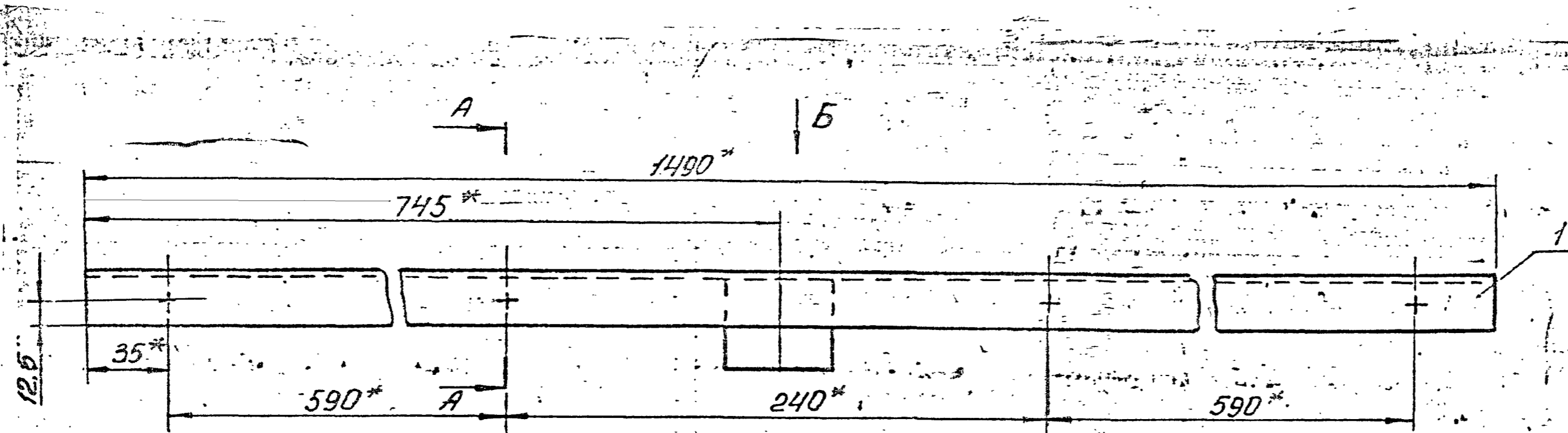
			EST. WT. 0.041 Kg	TO BE STAMPED OR MARKED WHERE INDICATED THUS # (LETTERS)
			ALL SHARP EDGES AND CORNERS TO BE REMOVED UNLESS OTHERWISE STATED MACHINED CORNERS TO HAVE R OUT- SIDE R NSIDE EQUIVALENT CHAMFERS ARE PERMISSIBLE.	
			MATERIAL:- OPEN HEARTH STEEL 15-4-II GOST 16523-70.	USED ON B MTO 1 41 004 Cb
ISSUE DATE	NATURE OF AMENDMENTS			
DRN <i>[Signature]</i>	SCALE:- 1:1 DIMENSIONS IN mm		CONTROLLERATE OF QUALITY ASSURANCE (HEAVY VEHICLES) AVADI.	
CHD <i>[Signature]</i>	TOLERANCE ON DIMENSIONS UNLESS OTHERWISE STATED IS 2102 -69			TITLE YOKE
TCD <i>[Signature]</i>	ALL THREADS CONFORM TO		D S CAT NUMBER	DRAWING NUMBER B MTO 1 41 004
DATE 17-03-88				
SIZE A4				



THE
LIFE OF
THE
LORD

THE
LIFE OF
THE
LORD

DRAWING NUMBER
B.MTO.1 41 004 Cb



1. MAY BE WELDED A MEDIUM OF SHIELDING GAS.
2. * DIMENSIONS FOR REFERENCE.
3. COATING: CHEMICAL PHOSPHATING-OIL FINISH.
- ④ 4. PAINT COATING IN ACCORDANCE WITH 175 TY-2-2.
- ⑨ 4. COATING OF OUTER SURFACES EXCEPT THREADED SURFACES. BROWN PRIMER ϕ A-03K, KHAKI ENAMEL XB-518. REQUIREMENTS AS PER 520 Ty 5.

COMMON TO BLT

DRG. INDIANISED BASED ON RUSSIAN ORIGINAL ISSUE-8.

PILOT SAMPLE SHOULD BE APPROVED BY A H S P BEFORE BULK PRODUCTION.

EST. WT. 1.7 Kg TO BE STAMPED OR MARKED WHERE INDICATED THUS = (LETTERS)

ALL SHARP EDGES AND CORNERS TO BE REMOVED UNLESS OTHERWISE STATED MACHINED CORNERS TO HAVE R OUT-SIDE R. INSIDE EQUIVALENT CHAMFERS ARE PERMISSIBLE.

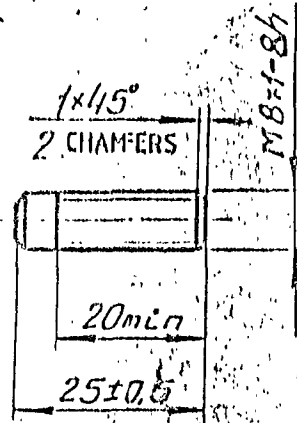
DRN	B. Dm	MATERIAL :-	USED ON :-
CHD	Handwritten		MTO.1 41 001 Cb
TCD	Handwritten		
APPD	Handwritten	CONTROLLERATE OF QUALITY ASSURANCE (HEAVY VEHICLES)	
DATE	29-03-88	A V A D I	
SCALE	1:2		
DIMENSIONS	IN mm.	TITLE	SHELF
TOLERANCE ON DIMNS	UNLESS OTHERWISE STATED IS 2102-69		
ISSUE	9	D S CAT NUMBER	DRAWING NUMBER
DATE	27.7.90		B.MTO.1 41 004 Cb
NATURE OF AMENDMENTS	Notn.No:172M. 655"A"- 88(AL.11/2).		

F-186
31
SIZE A4



DRAWING NUMBER
B-MTO 1 41 005

▽3



DRG. CREATED BASED ON RUSSIAN ORIGINAL ISSUE-4

COMMON TO BLT

1. ALTERNATE MATERIAL : STEEL 20 GOST 1050-60 OPEN HEARTH.
2. THREADING MAY BE CARRIED OUT TO THE ENTIRE LENGTH OF THE STUD.
- ⑤ 3. COATING: Zn 6 CR.

F-186
78

PILOT SAMPLE SHOULD BE APPROVED BY A H S P BEFORE BULK PRODUCTION,

EST. WT. 0,009 Kg	TO BE STAMPED OR MARKED WHERE INDICATED THUS ≡ (LETTERS)
----------------------	---

ALL SHARP EDGES AND CORNERS TO BE REMOVED UNLESS OTHERWISE STATED MACHINED CORNERS TO HAVE R OUT-SIDE R INSIDE EQUIVALENT CHAMFERS ARE PERMISSIBLE.

MATERIAL:- OPEN HEARTH STEEL 15 GOST 1050-60	USED ON B-MTO 1 41 004 Cb
--	------------------------------

5	14.10.88	AMD.T. LIST 6/II, BOOK-11
ISSUE	DATE	NATURE OF AMENDMENTS

CONTROLLEFATE OF QUALITY ASSURANCE (HEAVY VEHICLES) AVADI.

DRN	SCALE:- 1 : 1
CHD	DIMENSIONS IN mm

	TITLE STUD
--	---------------

TCD	TOLERANCE ON DIMENSIONS UNLESS OTHERWISE STATED IS 2102 -69
APPD	ALL THREADS CONFORM TO IS: 4218 Pt IV

D S CAT NUMBER	DRAWING NUMBER B-MTO 1 41 005
----------------	----------------------------------

DATE	16-03-89
SIZE	A4



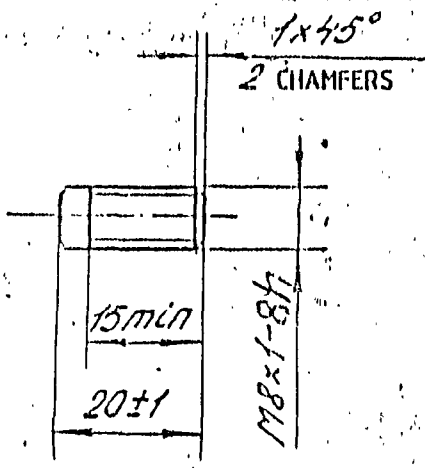
DRG. CREATED BASED ON RUSSIAN ORIGINAL ISSUE-4

COMMON TO BLT

F-186
79

DRAWING NUMBER
B-MTO 1 41 006

▽3



1. ALTERNATE MATERIAL ; STEEL 20 GOST 1050-60 open hearth.
2. THREADING IS TO BE CARRIED OUT TO THE ENTIRE LENGTH OF THE STUD.
- ⑤ 3. COATING: Zn 6 CR.

PILOT SAMPLE SHOULD BE APPROVED BY A H S P BEFORE BULK PRODUCTION,

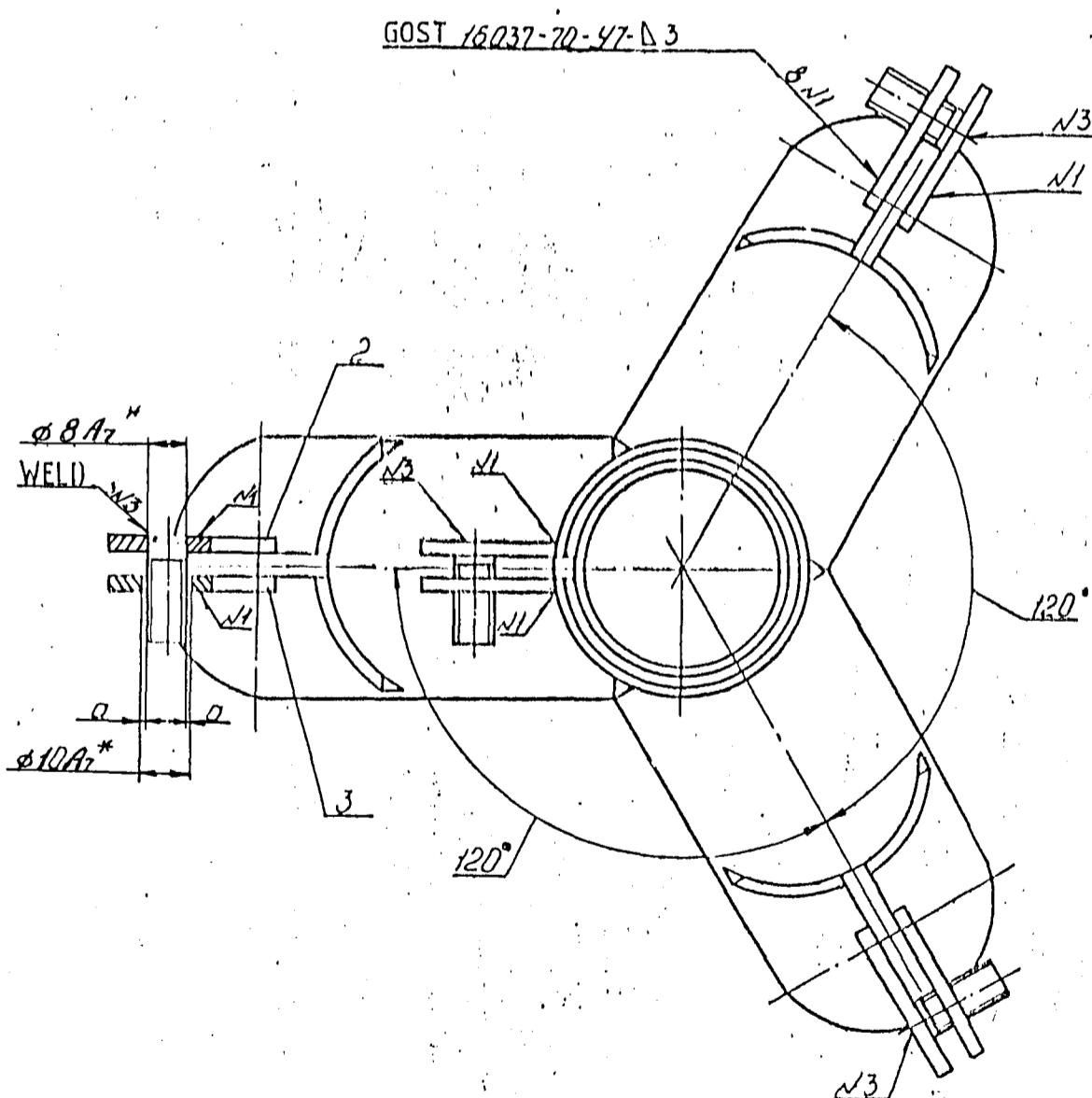
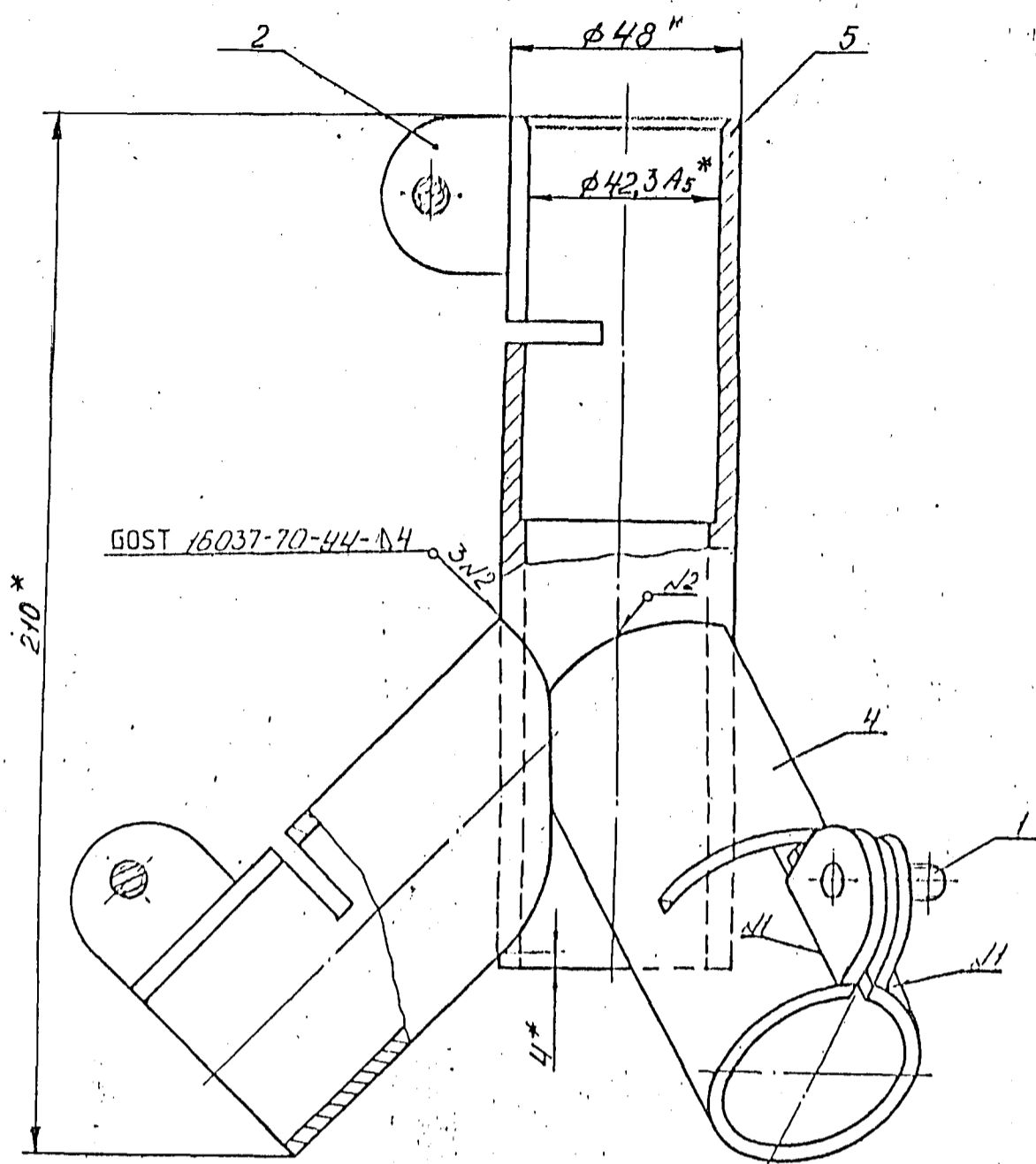
		EST. WT. 0,0078 Kg	TO BE STAMPED OR MARKED WHERE INDICATED THUS ≡ (LETTERS)
ALL SHARP EDGES AND CORNERS TO BE REMOVED UNLESS OTHERWISE STATED MACHINED CORNERS TO HAVE R OUT-SIDE R INSIDE EQUIVALENT CHAMFERS ARE PERMISSIBLE.			
MATERIAL:- OPEN HEARTH STEEL 15 GOST 1050-60		USED ON B-MTO 1 41 004 Cb B-MTO 1 41 005 Cb	
5	14.10.88	AMDT. LIST 6/II, BOOK-II	
ISSUE	DATE	NATURE OF AMENDMENTS	
DRN	<i>[Signature]</i>	SCALE:- 1:1 DIMENSIONS IN mm	
CHD	<i>[Signature]</i>	CONTROLLERATE OF QUALITY ASSURANCE (HEAVY VEHICLES) AVADI.	
TCD	<i>[Signature]</i>	TOLERANCE ON DIMENSIONS UNLESS OTHERWISE STATED IS 2102 -69	
APPD	<i>[Signature]</i>	ALL THREADS CONFORM TO IS: 4218 Pt IV	
DATE	16-03-88	TITLE STUD	
SIZE	A4	D S CAT NUMBER	
		DRAWING NUMBER B-MTO 1 41 006	

342





DRAWING NUMBER
B-MTO 1.41.005 Cb



1. ELECTRIC ARC WELDING IS TO BE CARRIED OUT FOR JOINTS IN A MIDST OF SHIELDING GAS.
2. DIFFERENCE OF DIMENSIONS "a" NOT TO EXCEED 1 mm.
3. COATING : CHEMICAL PHOSPHATING - OIL FINISH.
- ④ 4. ~~PAINT COATING IN ACCORDANCE WITH 175 TY 2-2.~~
5. * DIMENSIONS FOR REFERENCE.
- ④ 6. COATING OF OUTER SURFACES, EXCEPT THREADED SURFACES. BROWN PRIMER $\phi 1-03K$. KHAKI ENAMEL XB - 510. REQUIREMENTS AS PER 520 Ty 5.

PILOT SAMPLE SHOULD BE APPROVED BY A H S P BEFORE BULK PRODUCTION.

EST WT 1.45 Kg	TO BE STAMPED OR MARKED WHERE INDICATED THUS # (LETTERS)
ALL SHARP EDGES AND CORNERS TO BE REMOVED UNLESS OTHERWISE STATED MACHINED CORNERS TO HAVE R OUT-SIDE R INSIDE EQUIVALENT CHAMFERS ARE PERMISSIBLE.	

DRN	<i>Ch...</i>	MATERIAL :-	USED ON :- B-MTO 1.41 001 Cb.
CHD	<i>P...</i>		
TCO	<i>...</i>		
APPD	<i>...</i>	CONTROLLERATE OF INSPECTION (HEAVY VEHICLES AVADI)	
DATE	11-04-88		
SCALE :- N.T.S			
DIMENSIONS IN MM			
TOLERANCE ON DIMNS UNLESS OTHERWISE STATED IS: 2102-69		TITLE	SUPPORT
ALL THREADS TO CONFORM TO		D S. CAT NUMBER	DRAWING NUMBER B-MTO 1.41.005 Cb
B	27.7.90	Notn.No:172M. 655 'A"-88(AL.11/2).	
ISSUE	DATE	NATURE OF AMENDMENTS	

COMMON TO BLT DRG. INDIANISED BASED ON RUSSIAN ORIGINAL ISSUE-7.

F-186
72
SIZE A2



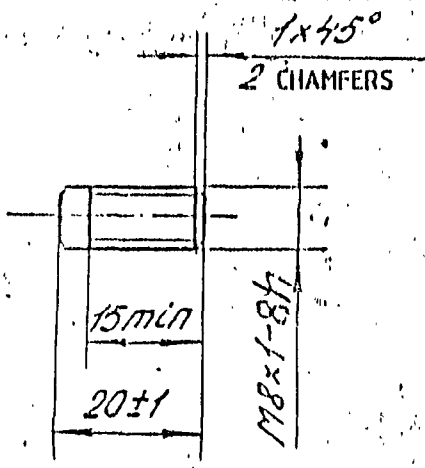
DRG. CREATED BASED ON RUSSIAN ORIGINAL ISSUE-4

COMMON TO BLT

F-186
79

DRAWING NUMBER
B-MTO 1 41 006

▽3



1. ALTERNATE MATERIAL ; STEEL 20 GOST 1050-60 open hearth.
2. THREADING IS TO BE CARRIED OUT TO THE ENTIRE LENGTH OF THE STUD.
- ⑤ 3. COATING: Zn 6 CR.

PILOT SAMPLE SHOULD BE APPROVED BY A H S P BEFORE BULK PRODUCTION,

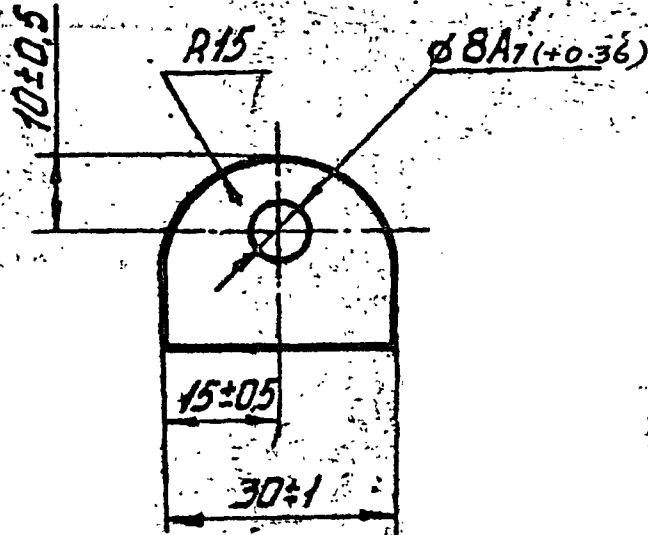
			EST. WT. 0,0078 Kg	TO BE STAMPED OR MARKED WHERE INDICATED THUS ≡ (LETTERS)
			ALL SHARP EDGES AND CORNERS TO BE REMOVED UNLESS OTHERWISE STATED MACHINED CORNERS TO HAVE R OUT-SIDE R INSIDE EQUIVALENT CHAMFERS ARE PERMISSIBLE.	
			MATERIAL:- OPEN HEARTH STEEL 15 GOST 1050-60	USED ON B-MTO 1 41 004 Cb B-MTO 1 41 005 Cb
5	14.10.88	AMDT. LIST 6/II, BOOK-II		
ISSUE	DATE	NATURE OF AMENDMENTS		
DRN	<i>[Signature]</i>	SCALE:- 1:1 DIMENSIONS IN mm	CONTROLLERATE OF QUALITY ASSURANCE (HEAVY VEHICLES) AVADI.	
CHD	<i>[Signature]</i>	TOLERANCE ON DIMENSIONS UNLESS OTHERWISE STATED IS 2102 -69	TITLE STUD	
TCD	<i>[Signature]</i>	ALL THREADS CONFORM TO IS: 4218 Pt IV		
APPO	<i>[Signature]</i>		D S CAT NUMBER	DRAWING NUMBER B-MTO 1 41 006
DATE	16-03-88			
SIZE	A4			

342



DRAWING NUMBER
B MTO 1 41 014

▽3 (▽)



CAN BE MANUFACTURED FROM STEEL 20-4-II GOST 16523-70
OPEN HEARTH.

COMMON TO BLT

F-186
85

PILOT SAMPLE SHOULD BE APPROVED BY A H S P BEFORE BULK PRODUCTION,

			EST. WT. 0.014 Kg	TO BE STAMPED OR MARKED WHERE INDICATED THUS ≠ (LETTERS)
			ALL SHARP EDGES AND CORNERS TO BE REMOVED UNLESS OTHERWISE STATED MACHINED CORNERS TO HAVE R OUT- SIDE R INSIDE EQUIVALENT CHAMFERS ARE PERMISSIBLE.	
			MATERIAL:- OPEN HEARTH STEEL 15-4-II GOST 16523-70	USED ON B MTO 1 41 005 Cb
ISSUE	DATE	NATURE OF AMENDMENTS		
DRN	<i>Whe</i>	SCALE:- 1:1 DIMENSIONS IN mm	CONTROLLERATE OF QUALITY ASSURANCE (HEAVY VEHICLES) AVADI.	
CHD	<i>Chand 09</i>			
TCD	<i>Sus</i>	TOLERANCE ON DIMENSIONS UNLESS OTHERWISE STATED IS 2102 -69		TITLE CHEEK PIECE
APPD	<i>1.8.88</i>	ALL THREADS CONFORM TO	D S CAT NUMBER	DRAWING NUMBER B MTO 1 41 014
DATE	18-03-88			
SIZE	A4			

1980

1981

1982

1983

1984

1985

1986

1987

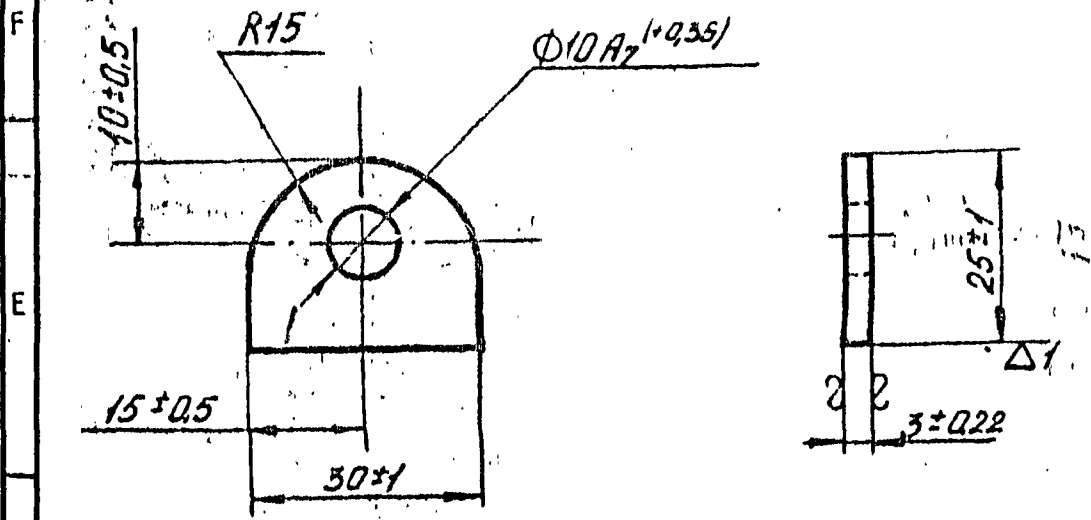
1988

1989

1990

DRAWING NUMBER
B.MTO.1 41 015

▽₃(▽)



CAN BE MANUFACTURED FROM STEEL 20-4-II GOST 16523-70
OPEN HEARTH.

INDIANISED DRG. PREPARED BASED ON ISSUE
COMMON TO BLT

F-186
86

PILOT SAMPLE SHOULD BE APPROVED BY A H S P BEFORE BULK PRODUCTION,

		EST. WT. 0.014 Kg	TO BE STAMPED OR MARKED WHERE INDICATED THUS ≡ I LETTERS)
		ALL SHARP EDGES AND CORNERS TO BE REMOVED UNLESS OTHERWISE STATED MACHINED CORNERS TO HAVE R OUT- SIDE R NSIDE EQUIVALENT CHAMFERS ARE PERMISSIBLE.	
		MATERIAL:- OPEN HEARTH STEEL 15-4-II GOST 16523-70	USED ON B.MTO.1 41 005 Cb
ISSUE DATE	NATURE OF AMENDMENTS	CONTROLLERATE OF QUALITY ASSURANCE (HEAVY VEHICLES) AVADI.	
DRN <i>[Signature]</i>	SCALE:- 1:1 DIMENSIONS IN mm	TITLE CHEEK PIECE	
CHD <i>[Signature]</i>	TOLERANCE ON DIMENSIONS UNLESS OTHERWISE STATED IS 2102 -69	D S CAT NUMBER	DRAWING NUMBER B.MTO.1 41 015
TCD <i>[Signature]</i>	ALL THREADS CONFORM TO		
APPO <i>[Signature]</i>			
DATE 17-03-88			
SIZE A4			



—



DRAWING NUMBER
B-MT0 141 016

UNLESS OTHERWISE SPECIFIED $R_z 80 / \checkmark (\checkmark)$

1. ALTERNATE MATERIAL : B 10 GOST 8733-74.
2. * DIMENSION FOR REFERENCE.

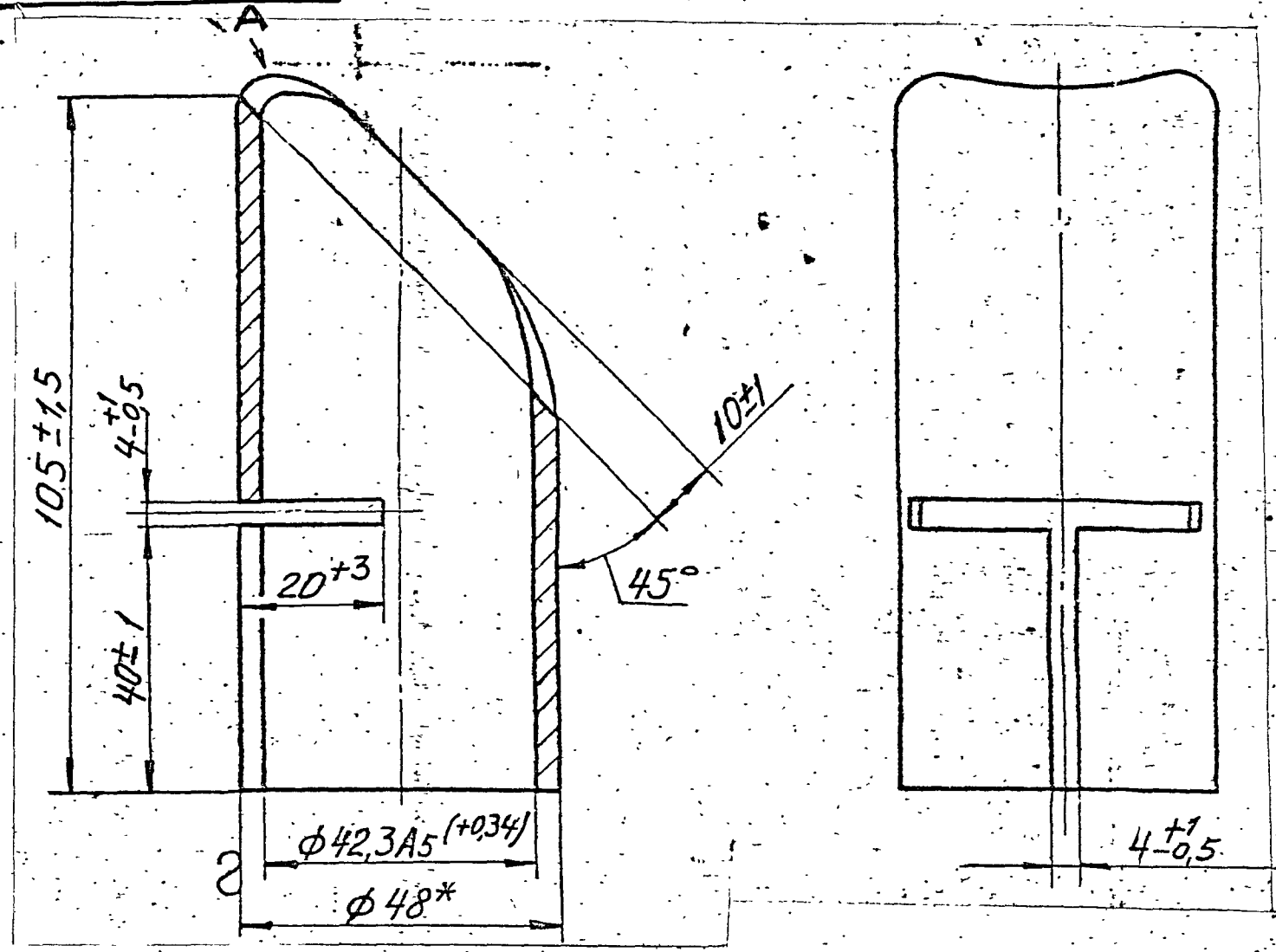
EXPLANATORY NOTE:-

- 3(a) REFERENCE MATERIAL QUOTED:
TUBE WITH EXTERNAL DIAMETER 48 ± 0.40 mm AND WALL THICKNESS $4.5 \pm 10\%$ AS PER GOST 8734-75 OF STEEL GRADE 20 AND SUPPLIED WITH MECHANICAL PROPERTIES AND CHEMICAL COMPOSITION AS PER GROUP 'B' GOST 8733-74. AND MANUFACTURED IN ACCORDANCE WITH STEEL GRADE '20' GOST 1050-74.
- (b) REFERENCE NOTE 2 ON ALTERNATIVE MATERIAL:
TUBE WITH EXTERNAL DIAMETER 48 ± 0.40 mm AND WALL THICKNESS $4.5 \pm 10\%$ AS PER GOST 8734-75. OF STEEL GRADE 10 AND SUPPLIED WITH MECHANICAL PROPERTIES AND CHEMICAL COMPOSITION AS PER GROUP 'B' GOST 8733-74 AND MANUFACTURED IN ACCORDANCE WITH STEEL GRADE 10 GOST 1050-74.
- 4(a) CHEMICAL COMPOSITION: AS PER STEEL GRADES 20 AND 10 GOST - 1050-74.

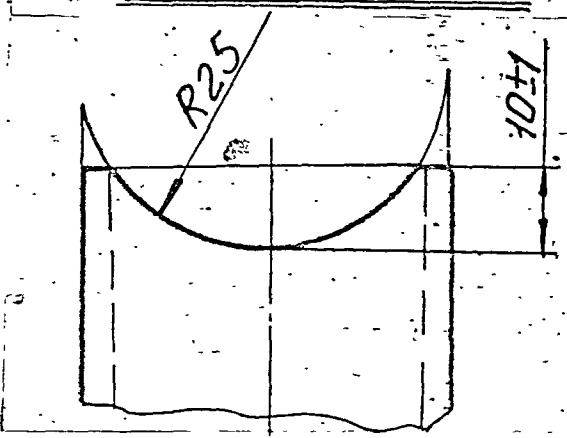
GRADE OF STEEL	CONTENT OF ELEMENTS %					
	C	Si	Mn	Cr	S	P
20	0.17-0.24	0.17-0.37	0.35-0.65	0.25	0.040	0.035
10	0.07-0.14	0.17-0.37	0.35-0.65	0.15	0.040	0.035

RESIDUAL CONTENT OF COPPER AND NICKEL SHOULD NOT EXCEED 0.25% EACH
MECHANICAL PROPERTIES: AS PER GOST 8733-74.

GRADE OF STEEL	TENSILE STRENGTH	YIELD POINT	ELONGATION %
	kgf/mm ²	kgf/mm ²	
20	42	25	21
10	35	21	24



VIEW 'A' TURNED



PILOT SAMPLE SHOULD BE APPROVED BY A H S P BEFORE BULK PRODUCTION

EST. WT. 0.24 Kg TO BE STAMPED OR MARKED WHERE INDICATED THIS # (LETTERS)

ALL SHARP EDGES AND CORNERS TO BE REMOVED UNLESS OTHERWISE STATED MACHINED CORNERS TO HAVE R OUT SIDE INSIDE EQUIVALENT CHAMFERS ARE PERMISSIBLE

DRN	35004	MATERIAL:-	USED ON
CH	35004	PIPE 48x4.5 GOST 8734-75	B-MT0 141 005 CB
TC	35004	PIPE B20 GOST 8733-74	
APPO	V. Rama	CONTROLLERATE OF QUALITY ASSURANCE (HEAVY VEHICLES)	
DATE	20.05.1994	AVADI	
SCALE:-	1:1	TITLE	
DIMENSIONS IN mm		PIPE	
TOLERANCE ON DIMS UNLESS OTHERWISE STATED IS: 2102-69		D S CAT NUMBER	
ALL THREADS TO CONFORM TO		DRAWING NUMBER	
ISSUE DATE		B-MT0 141 016	
MATURE OF AMENDMENTS			

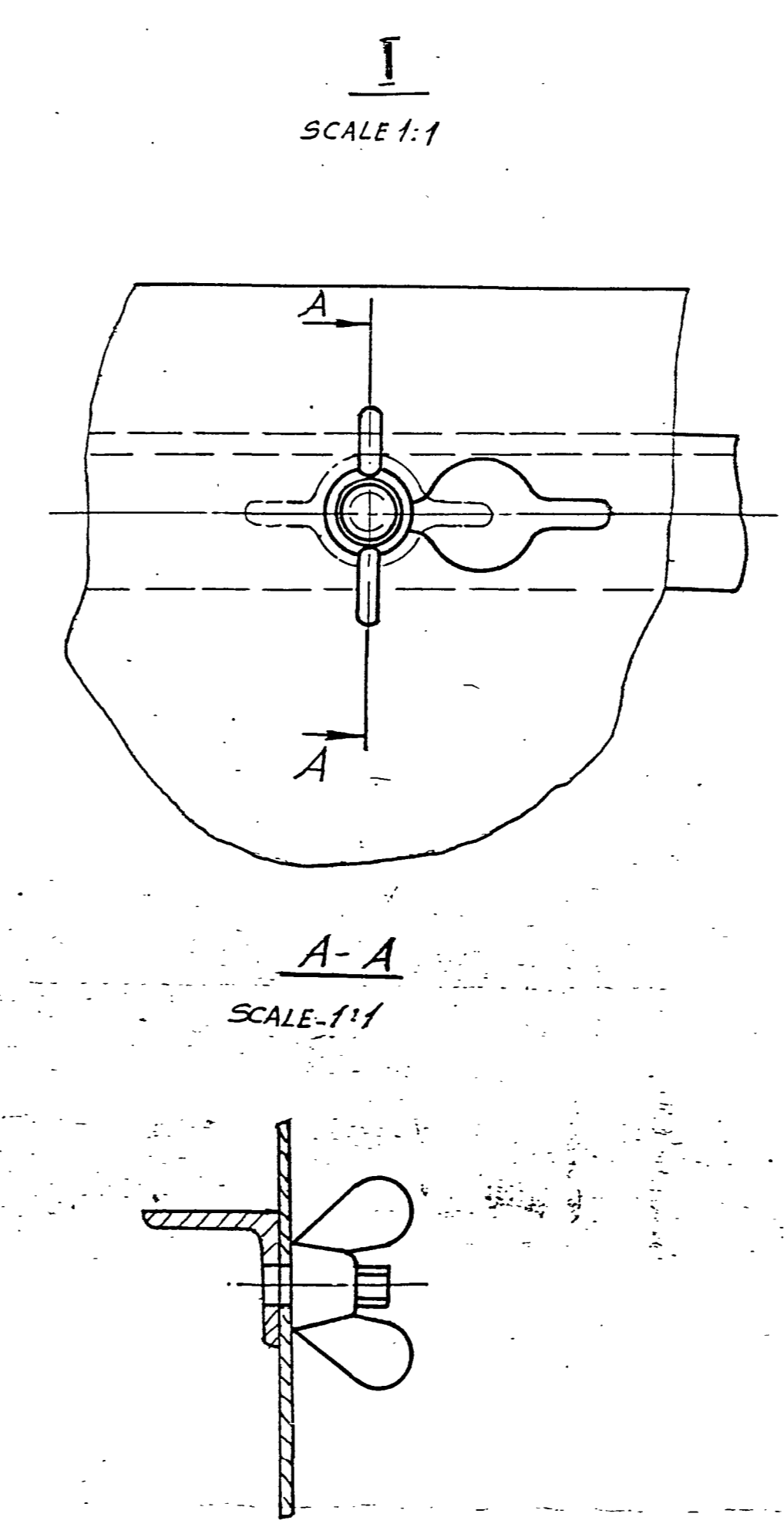
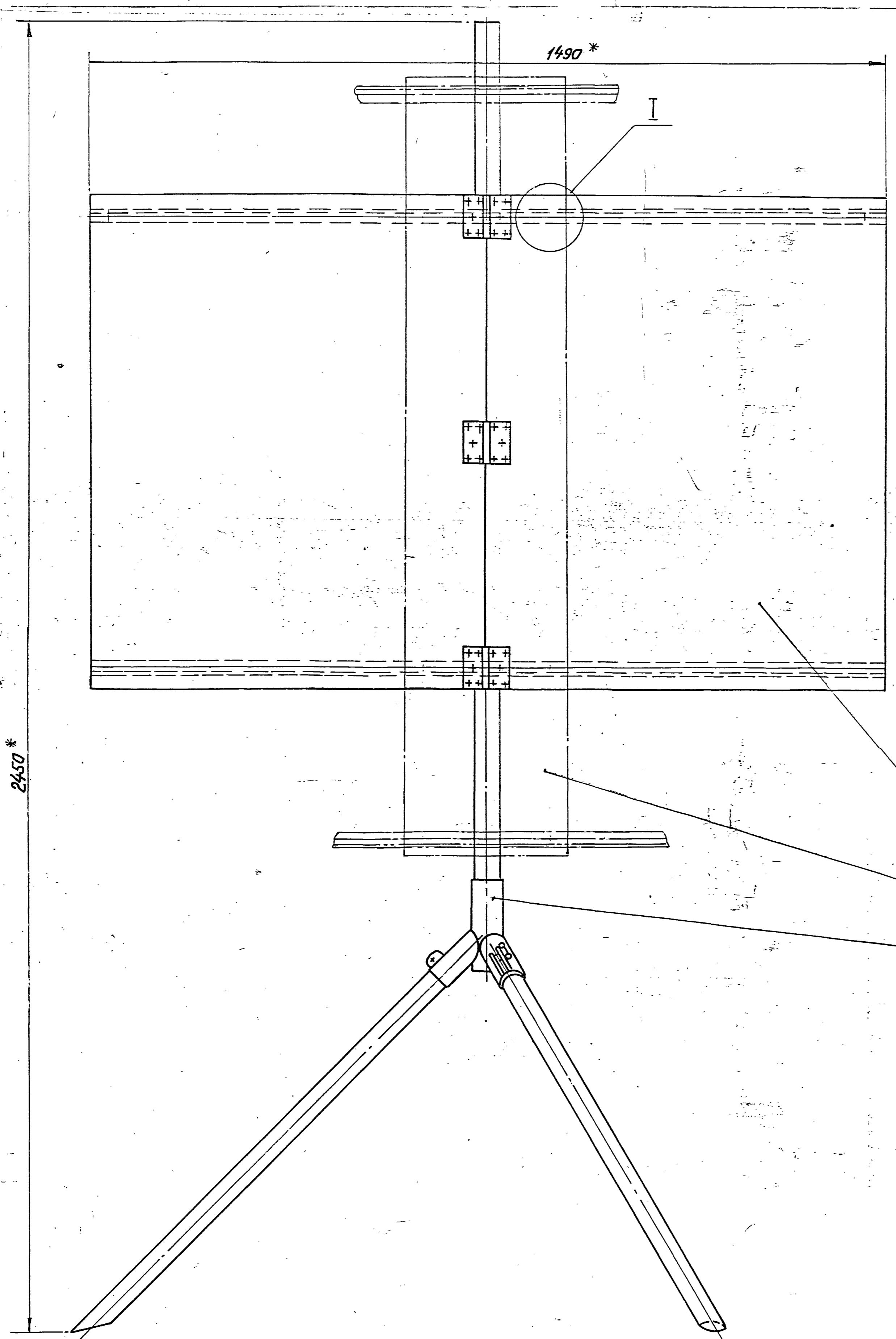
COMMON TO BLT

F-186
87

SIZE A3



DRAWING NUMBER
172 95 068Cb



1. TO BE FURNISHED WITH PANEL 2 WITH COORDINATES APPLIED AS PER DRAWING 172-21-1CX-4. COORDINATES MAY BE APPLIED DURING THE MANUFACTURING OF PANEL INSCRIPTION 172 21 1CX-4 IS TO BE MARKED AT LEFT TOP ANGLE OF THE PANEL AT FACE SPACE.
2. MOUNTING OF PANEL -3 FOR ALIGNMENT 2328M IS SHOWN WITH DOTTED LINES.
3. * DIMENSIONS FOR REFERENCE.

PILOT SAMPLE SHOULD BE APPROVED BY A H S P BEFORE BULK PRODUCTION.

EST. MASS	TO BE STAMPED OR MARKED WHERE INDICATED THIS #
24.0 Kg	

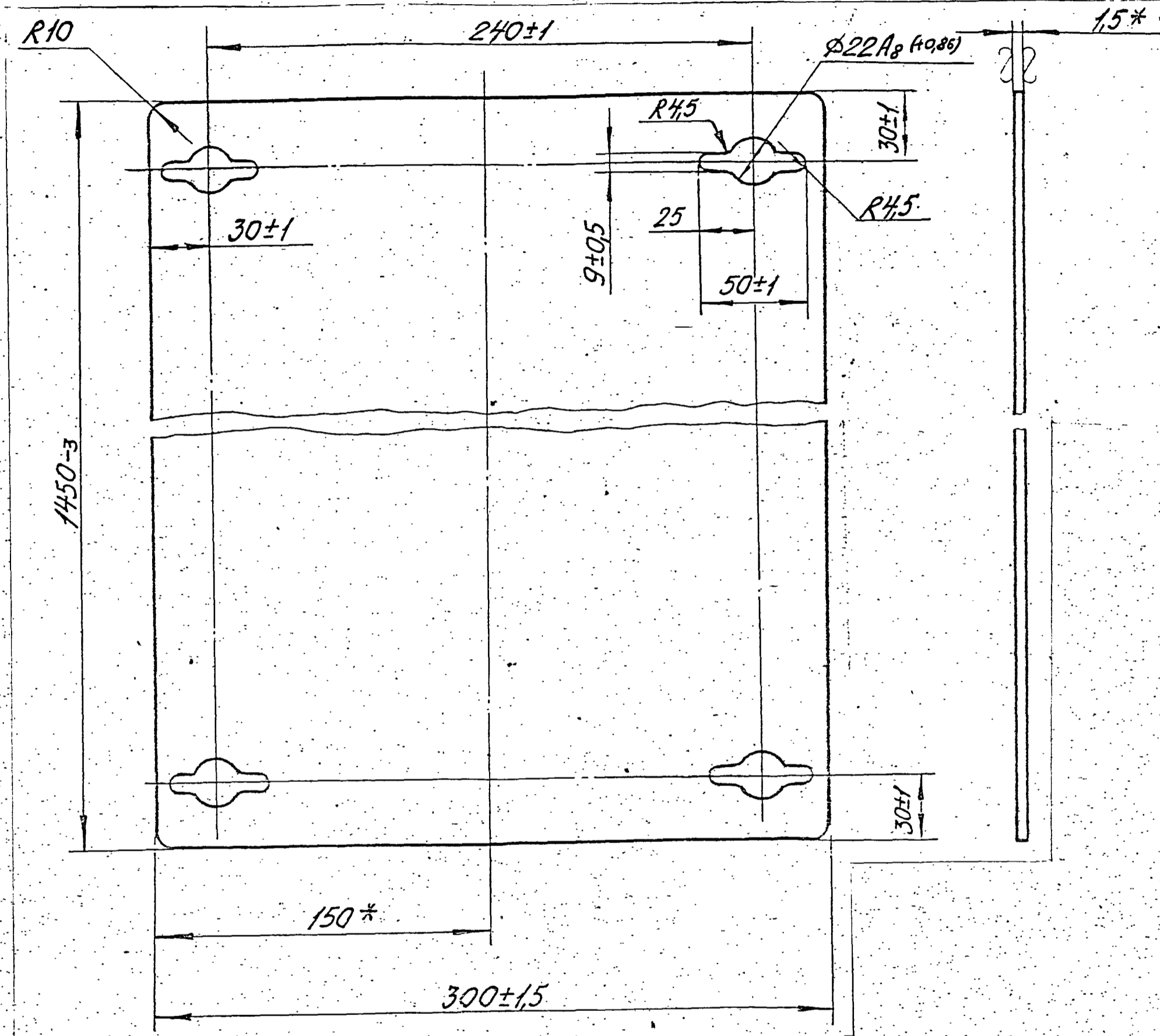
ALL SHARP EDGES AND CORNERS TO BE REMOVED UNLESS OTHERWISE STATED MACHINED CORNERS TO HAVE R OUTSIDE R INSIDE EQUIVALENT CHAMFERS ARE PERMISSIBLE.

DRN	26/6	MATERIAL :-	USED ON :-
EHD	Palmer		VARIOUS
TCD	8/11/88	CONTROLLERATE OF QUALITY ASSURANCE (HEAVY VEHICLES)	
APPD		A V A D I	
DATE	16-04-88	PANEL ALIGNMENT STAND ASSY	
SCALE	1:5	ISSUE DATE NATURE OF AMENDMENTS	
DIMENSIONS IN mm.		TOLERANCE ON DIMS UNLESS OTHERWISE STATED IS 2:02-69	
ALL THREADS TO CONFORM TO		D S CAT 11-11	

172 95 068Cb

DRAWING NUMBER
B-MTO 141 012

UNLESS OTHERWISE SPECIFIED. $R_{z80} \checkmark (\checkmark)$



1. SURFACES OF THE PLATE SHOULD BE CLEAN AND SMOOTH. IN THE LIMITS OF NEGATIVE TOLERANCE OF PLATE THICKNESS CRICKS AND SCRATCHES ARE ALLOWED, PROVIDING APPLICATION OF LONGITUDINAL AND CROSS-WISE LINES BY GRAPHITE PENCIL.
2. * DIMENSIONS FOR REFERENCE.

EXPLANATORY NOTE :-

3. REFERENCE MATERIAL QUOTED:
BRASS SHEET OF THICKNESS 1.5mm, SOFT FROM BRASS GRADE Л63 GOST 931-70 AND MANUFACTURED IN ACCORDANCE WITH BRASS (PRESSURE TREATED) GRADE Л63 GOST 15527-70.
4. CHEMICAL COMPOSITION :-
AS PER GRADE Л63 GOST 15527-70.

BASIC ELEMENTS %							ADMIXTURES % MAXIMUM										
Cu	Pb	Al	Fe	Mn	Sn	Zn	Pb	Fe	Sb	Bi	P	Mn	As	Sn	S	AL	TOTAL
62.0-65.0	-	-	-	-	-	REMAINDER	0.07	0.2	0.005	0.002	0.01	-	-	-	-	-	0.50

THE ADMIXTURES NOT INDICATED IN THE TABLE ARE CONSIDERED AS COMMON MIXTURES.

5. MECHANICAL PROPERTIES :-
AS PER GRADE Л63 SOFT GOST 931-70.

TENSILE STRENGTH Kgf/mm ²	ELONGATION % MIN	HARDNESS BHN
30-41	38	70

PILOT SAMPLE SHOULD BE APPROVED BY A H S P BEFORE BULK PRODUCTION.

EST. WT. 5.54 Kg TO BE STAMPED OR MARKED WHERE INDICATED THUS (LETTERS)
ALL SHARP EDGES AND CORNERS TO BE REMOVED. UNLESS OTHERWISE STATED MACHINED CORNERS TO HAVE R OUT - SIDE R INSIDE. EQUIVALENT CHAMFERS ARE PERMISSIBLE.

DRN	CHD	TCD	APPO	DATE	SCALE	DIMENSIONS IN mm	TOLERANCE ON DIMNS UNLESS OTHERWISE STATED IS 2102-69	ALL THREADS TO CONFORM TO	ISSUE	DATE	NATURE OF AMENDMENTS
				20.05.1994	1:2						
MATERIAL :- PLATE Л63 M-1.5 GOST 931-70								USED ON			
CONTROLLERATE OF QUALITY ASSURANCE (HEAVY VEHICLES)								A V A O I			
TITLE : GUARD								D S CAT NUMBER		DRAWING NUMBER B-MTO 141 012	

COMMON TO BLT

F.186
83
SIZE A2



