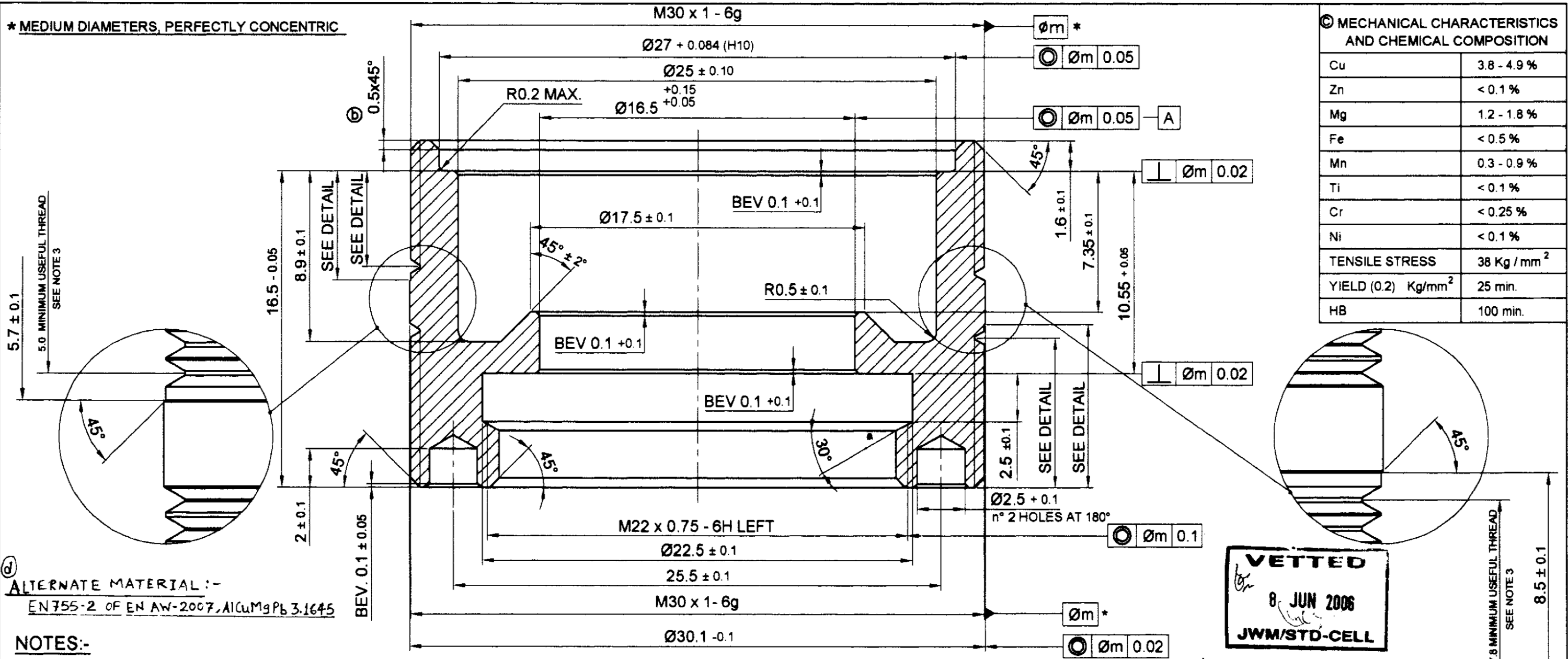


* MEDIUM DIAMETERS, PERFECTLY CONCENTRIC



MECHANICAL CHARACTERISTICS AND CHEMICAL COMPOSITION	
Cu	3.8 - 4.9 %
Zn	< 0.1 %
Mg	1.2 - 1.8 %
Fe	< 0.5 %
Mn	0.3 - 0.9 %
Ti	< 0.1 %
Cr	< 0.25 %
Ni	< 0.1 %
TENSILE STRESS	38 Kg / mm ²
YIELD (0.2) Kg/mm ²	25 min.
HB	100 min.

ALTERNATE MATERIAL :-
EN755-2 OF EN AW-2007, AlCuMgPb 3.1645

NOTES:-

- MATERIAL: ALUMINUM ALLOY 2024-TN (NOTE 5)
 - SURFACE TREATING : ANODIC OXIDATION - NEUTRAL COLOUR (NOTE 4)
 - THE TWO THREADS M30x1-6g SHALL HAVE NO INTERFERENCE WITH THE INTERMEDIATE ZONE WITH DIAMETER 30,20-0.009-0.034(g7).
 - THE ITEM SHALL BE RESISTANT TO SALT FOG SPRAY, 5% CONCENTRATION FOR 96 HOURS, ACCORDING TO METHOD 811.1 OF ASTM B 117-90
 - ALTERNATIVE MATERIAL : LIGHT ALLOY 2030, DIN 1747 SPECIFICATION- Al Cu Mg Pb F37 - 3.1645.51
- ⓑ BEV. MEANS BEVEL (ANGLE 45°)
- ⓒ THE SPEC. FED-STD-151b HAS BEEN SUPERSEDED BY THE ENCLOSED ASTM B 117-90, THE DURATION AND THE CONCENTRATION MUST BE KEPT CONSTANT.

इन आरेखणों तथा इसके साथ की सम्पूर्ण सामग्री का स्वत्वाधिकार भारत सरकार रक्षा मंत्रालय की भारतीय आयुध निर्माणियों के पास है। भारतीय आयुध निर्माणियों के महानिदेशक की लिखित अनुमति के बिना इनकी नकल या किसी भी रूप में इनके उद्धरण या इनमें समाहित सूचना किसी अनधिकृत व्यक्ति को उपलब्ध नहीं कराई जानी चाहिए।

THE COPYRIGHT OF THESE DRAWINGS AND ALL ATTACHMENTS THERE TO BELONGS TO THE INDIAN ORDNANCE FACTORIES, MINISTRY OF DEFENCE, GOVT OF INDIA THEY SHOULD NOT BE COPIED, REPRODUCED IN ANY WAY OR THE INFORMATION CONTAINED THEREIN MADE AVAILABLE TO UNAUTHORISED PERSONS WITHOUT THE WRITTEN PERMISSION OF THE DIRECTOR OF ORDNANCE FACTORIES.

मूलमाप व अन्वयोजन
NOMINAL SIZE & FIT

विचलन
DEVIATION

SELF CENTERING RING NUT							1		WEIGHT: 12.48 gm.	
संख्या NO OFF	विवरण DESCRIPTION	पुर्जा क्र. PART NO	पदार्थ MATERIAL	मानक STANDARD	परिमाण DIMENSIONS	अध्यक्ष REMARKS	दिनांक DATE	नाम NAME		
सामान्य सहिष्णुता GENERAL TOLERANCE	ⓐ	Alternate material added	ⓐ	DRAWING NUMBER CHANGED, DRG. NO. 3690010 WAS	16/06	AMOL				
रेखिक परिमाण LINEAR DIMENSION		Ref. letter No. 6808/FS/		00073690010.	2005	AMOL				
0-6	±0.1	PLG/2007 Dt. 19/05/07	ⓑ	DIMENSION ADDED 0.5x45° AND NOTE ADDED FOR	20/04	AMOL				
6-30	±0.2	NOTE NO. 4 amended as		BEVEL 45°, REF. LETTER NO. 6806/FUZE FB-40/MPPF	2006					
30-120	±0.3	Per Ref. letter NO - QAEW/		2006 (15485) AND (14808) DATED 31/01/06.						
120-315	±0.5	SO/FB-40 dated	ⓒ	MECHANICAL CHARACTERISTICS AND CHEMICAL COMP.	05/06	AMOL				
315-1000	±0.8	22/APRIL/2008		& NOTE ADDED, REF. NO. 6804/FS/FUZE FB-40, D. 24/05/06	2006					
1000-2000	±1.2									
कोणिक परिमाण ANGULAR DIMENSION	संख्या NO OFF	संबंधित पुर्जा क्र. DRG. NO OF ASSOCIATED PART	सूचक INDEX	संशोधन ALTERATION	2003	दिनांक DATE	नाम NAME			
1-10	±1°									
10-50	±30'									
50-100	±20'									
> 100	±10'									
मापक 'म्यू एम' में VALUE IN 'μm'										
-	> 25									
∇	8-25									
∇∇	1.6-8									
∇∇∇	0.025-1.6									
∇∇∇∇	< 0.025									
SELF CENTERING RING NUT							मापमान SCALE	आरेखित DRAWN	07/01	MGH
FOR SUB ASSY WITHOUT MECHANIC SAFETY							5:1	जाँचा CHECKED	08/06/06	
FUZE FB-40								अनुमोदित APPROVED		
मशीनी औजार आदिरूप फैक्टरी, अम्बरनाथ							द्वारा बदला REPLACED BY	हेतु बदला REPLACED FOR		
MACHINE TOOL PROTOTYPE FACTORY, AMBERNATH							कार्यालय OFFICE	D.O.		
							आरेखण क्र. DRAWING NO.	3690010		