

SHEET REV RECORD

ALL SHEETS ARE THE SAME REVISION

REVISION RECORD

| REV | ECO | DESCRIPTION | DATE | APVD |
|-----|-----|--------------------------------|-----------|---------------|
| 01 | | Freeze | 09-Jun-15 | M. Yoel |
| 02 | | Restricted | 30-Aug-15 | Z. Rabayev |
| -- | | Identical To Previous Released | 09-Apr-18 | L. Goldshtein |

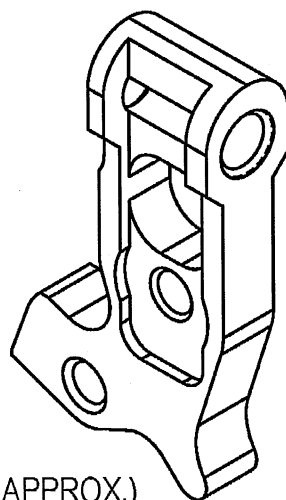
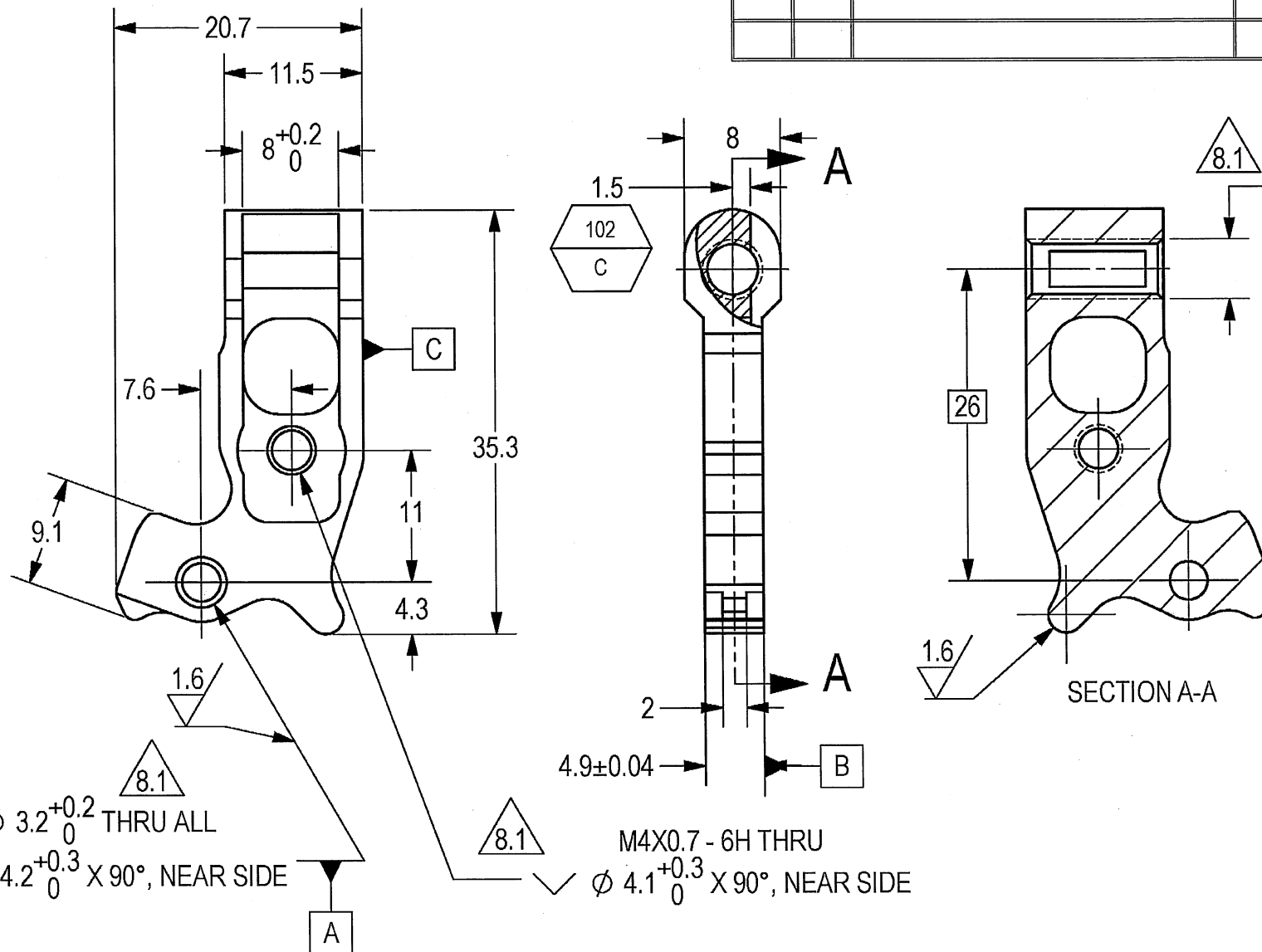
THIS DOCUMENT AND THE INFORMATION CONTAINED IN IT ARE PROPRIETARY AND CONFIDENTIAL TO OFT. NO PERSON OR ENTITY IS ALLOWED TO COPY, REPRINT, REPRODUCE OR PUBLISH ANY PART OF THIS DOCUMENT, NOR DISCLOSE ITS CONTENTS TO OTHERS, NOR MAKE ANY USE OF IT, NOR ALLOW OR ASSIST OTHERS TO MAKE ANY USE OF IT UNLESS BY THE PRIOR WRITTEN EXPRESS AUTHORIZATION OF OFT AND THEN ONLY TO THE EXTENT AUTHORIZED.
COPYRIGHT-OFT.

NOTES :

1. INTERPRET THIS DRAWING IAW ASME Y14.100M.
2. MATERIAL: CRES PLATE TYPE 17-4 PH PER AMS-5604
3. UNLESS OTHERWISE SPECIFIED, UNDEFINED MACHINED FILLET MAX RADII SHALL BE 0.2.
4. DEBURR AND REMOVE SHARP EDGES, APPROX. 0.2X45 Deg.
5. ALL DIMENSIONS ARE AFTER HEAT TREATMENT AND BEFORE COATING.
6. GENERAL TOLERANCES ACCORDING TO ISO 2768-m.
7. HEAT TREAT TO H1150 PER MIL-H-6875.
8. COATING: A DRY FILM LUBRICATION IN A FLUOROPOLYMER ORGANIC RESIN CLASS 2 COLOR MATTE BLACK TYPE I; 8-16 MICRON THICK PER VS-1-3-1-165 (OR EQUIVALENT).

BAKE PART AFTER PLATING WITHIN 3 HOURS per AMS-2759/9 TABLE 1 for 3 hours minimum at 191°C.

- 8.1 PROTECT THREAD AFTER PASSIVATION.
9. QUALITY ASSURANCE PROVISIONS:
 - 9.1. QUALITY ASSURANCE PROVISIONS FOR THIS ITEM PER RDMQD00012P.
 - 9.2 MAJOR CHARACTERISTICS NRS 101 TO 102.
10. PARENTHEICAL FIGURES ARE FOR REFERENCE ONLY.
11. PACKAGING AND PACKING: THE FINISHED PART SHALL BE PRESERVED AND PACKAGED IN ACCORDANCE WITH MANUFACTURER'S BEST COMMERCIAL PRACTICE.
12. IDENTIFY PER MIL-STD-130 PARA 4.1.B, BY LABELING ITS CONTAINER WITH THE PART NUMBER. CHARACTERS MINIMUM TEXT HEIGHT 1.25 MM.



(WEIGHT: 0.01 Kg APPROX.)

SEE ATTACHED MEDIA

| | | | | | | | |
|--|------------|---------------|--|--------------|--|-------------------------------------|--|
| UNLESS OTHERWISE SPECIFIED | | SIGNATURE | | DATE | | ORDNANCE FACTORY TIRUCHIRAPPALLI | |
| DIMENSIONS ARE IN MM PER ASME Y14.5M -1994 | | DRAWN | | 11/9/20 | | FOR: BLOCK INSTALLATION | |
| TOLERANCES | | CHECKED | | | | TITLE LEVER TRIGGER | |
| LINEAR | ANGULAR | HOS/DDO | | 3/9/20 | | OF: 12.7MM SRCG | |
| SEE NOTE 6 | SEE NOTE 6 | OFFICER/PRODN | | | | SIZE B | |
| 1st. ANGLE PROJECTION | | OFFICER/QC | | | | CAGE CODE 2291A | |
| SURFACE TEXTURE IN Micro Meter | | OFFICER/DDO | | 4/9/20 | | DWG NO Y03740A-00 | |
| PROJECT OFFICER | | PLM Control | | SCALE 2:1 | | AUTOMATED DRAWING (SW) | |
| | | | | SHEET 1 OF 1 | | | |