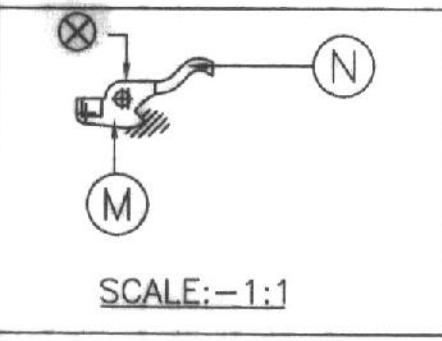


II-I Hh 'ON DRG  
 NO. QS/ISO-9000/DO/01  
 REV. NO. 00-DT. 09-06-2001



NOTE :-  
 MANUFACTURER'S INITIAL, BATCH No. & YEAR OF  
 MANUFACTURE TO BE MARKED ON THE SURFACE  
 MARKED THUS ' ⊗ '

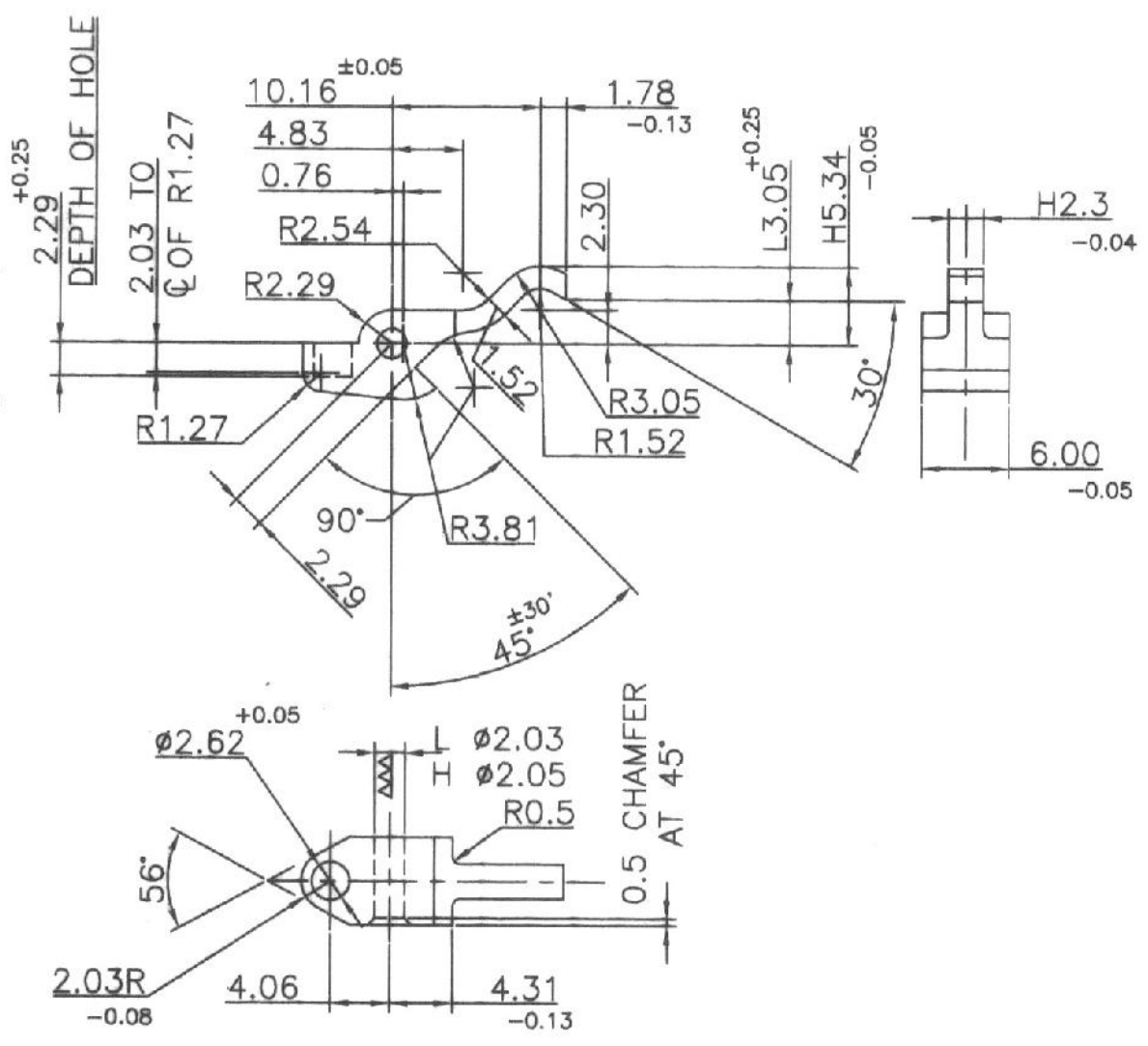
**MATERIAL :- BS 970 Pt. 1 : 1983 Gr. 070 M55**  
 ALT.-MATERIAL FROM IC.ROUTE:-  
 IC.DRG. No.SK- 3444\*  
 MATL.- BS 3146 Pt.1-1974 TYPE CLA 12 Gr.'C'  
 ALT.MATERIAL FOR MIM COMPONENTS  
 MIM 4650  
 C: 0.3 - 0.6% Ni : 1.5 - 2.5 %  
 Cr: 0.5% MAX. Si : 0.5 %  
 Mo: 0.5% MAX. Mn: 0.3 %  
 P: 0.03% MAX Fe-BALANCE  
 S: 0.03% MAX  
 SINTERED DENSITY : 7.5 MIN. g/cm<sup>3</sup>.

**HARDNESS:-**  
 COMPONENT MUST CONFORM  
 TO THE FOLLOWING HARDNESS  
 NUMERALS AT THE POSITION  
 INDICATED.

LETTER	DPN
M	450-550
N	600-700

**PROTECTIVE FINISH**  
 PHOSPHATED TO SPECN  
 JSS-0465-01:1988 CLASS II  
 (ACCELERATED) OIL FINISH.

SURFACES INDICATED THUS TO  
 BE FINISHED SMOOTH.   
 DIMENSIONS ARE IN mm.



DATE	D.A.NO.	NATURE	J.W.M (D.O.)
19-05-95	27/95	PROTECTIVE FINISH- PHOSPHATED TO SPECN/WPN/GEN/3 CLASS II, OIL FINISH ADDED	Sd. RAJAWASTHY
15-05-99	67/99	MATERIAL-'BS 970 EN9' ALTERED TO 'BS970 Pt.1:1983 GRADE 070 M55' & PROTECTIVE FINISH 'PHOSPHATED TO SPECN/WPN/GEN/3 CLASS II. OIL FINISH' ALTERED TO PHOSPHATED TO SPECN-JSS-0465-01:1988 CLASS II (ACCELERATED) OIL FINISH.	Sd. T.K.CHAKRABORTY
08-11-02	117/02	IC. MATERIAL&IC. DRG. No.:-ADDED	Sd. T.K.C
09-04-04	35/04	MANUFACTURER'S INITIAL,BATCH No.& YEAR OF MANUFACTURE TO BE MARKED ON THE SURFACE MARKED THUS ' ⊗ ' :- ADDED	Sd. KALI
03-07-06	29/06	AT ZONE D,E - 1,2 ALT.MATERIAL FOR MIM COMPONENTS:- MIM 4650 WAS MIM 4630 & MATERIAL COMPOSITION AMENDED ACCORDINGLY	



<b>REVOLVER 32(7.65mm)MK-I</b> <b>STOP CYLINDER</b>		DRAWN	TRACED	CHECKED
SCALE		DATE 03-07-2006		
2:1,(1:1)		APPROVED		
 <b>SMALL ARMS FACTORY</b> <b>KANPUR</b>		 J.W.M./DO		
		DRG. NO. <b>PH 1-11</b>		
 SHT. 1 OF 1				