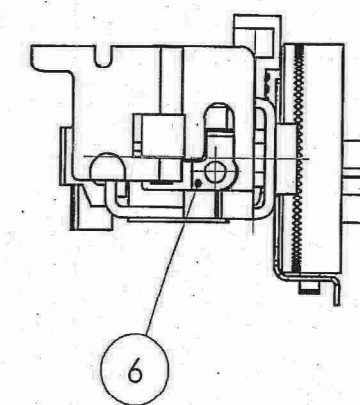
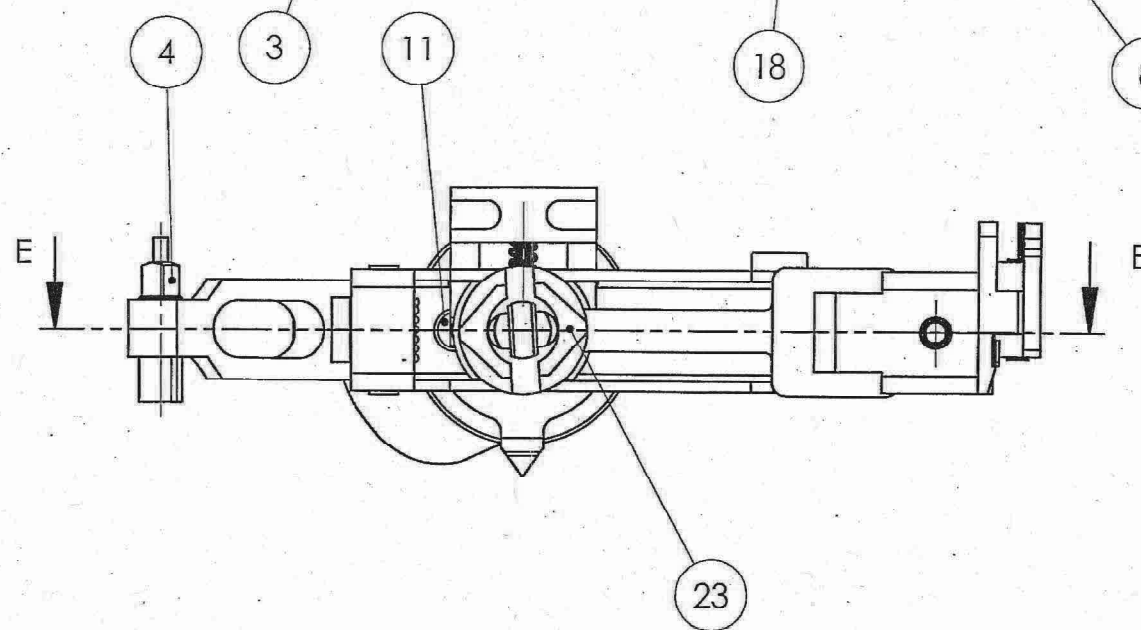
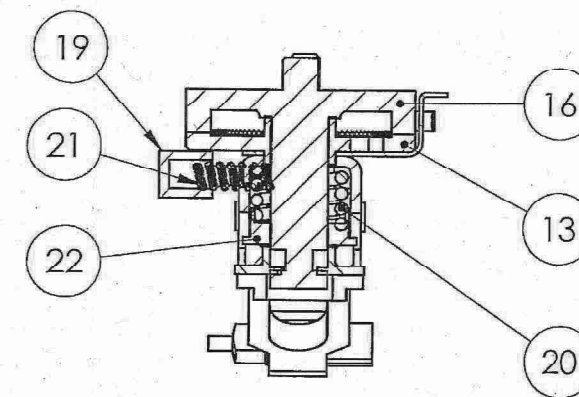
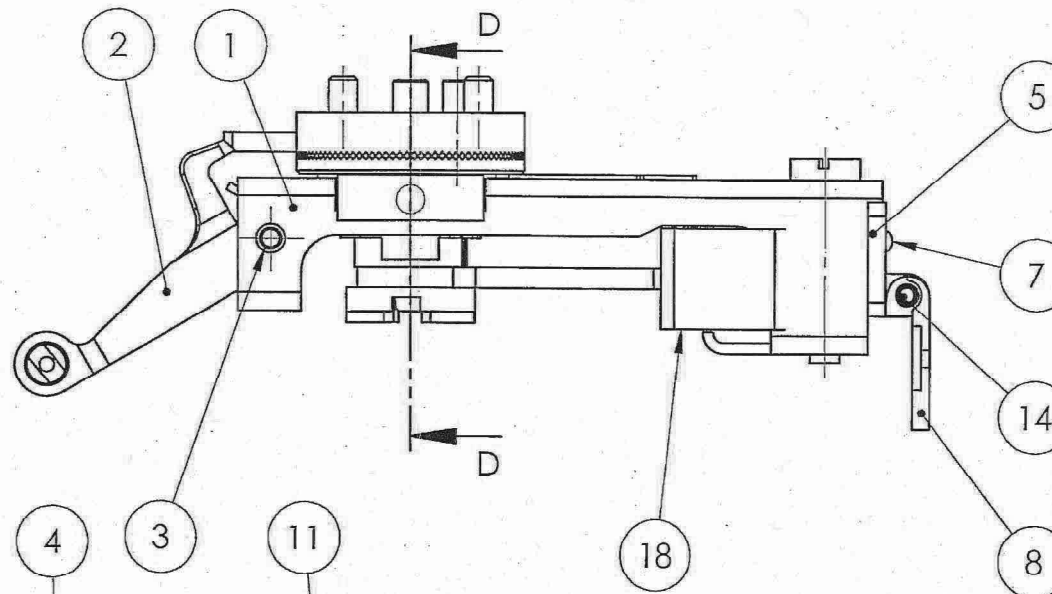
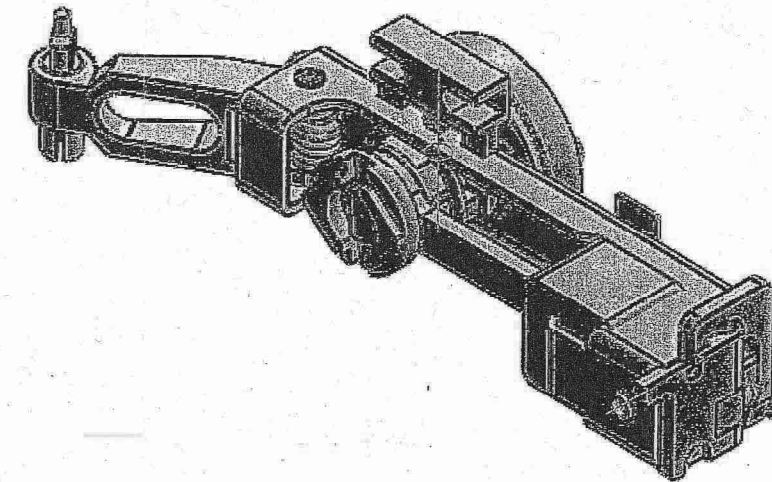
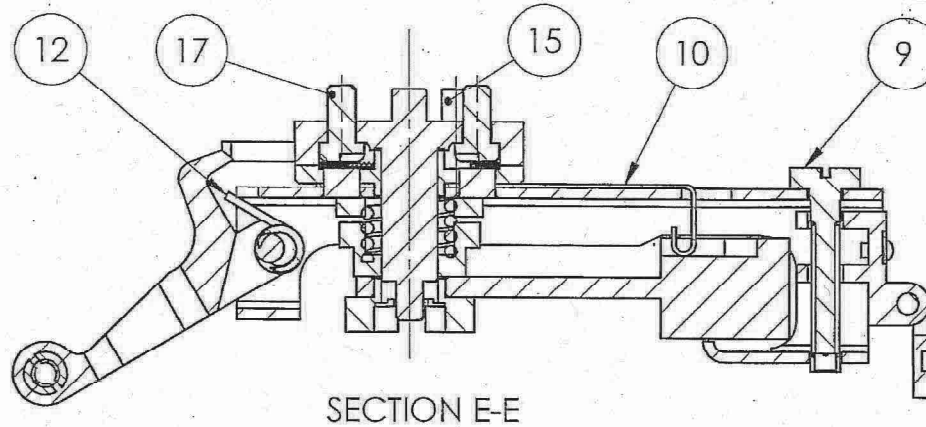


PROCEDURE FOR ASSEMBLY

1. PT- 5&6 RIVETED WITH PT-7.
2. AFTER RIVET OF PT- 5&6, PT-8.IS FLARED WITH PT-14 .
3. PT- 10,11&13 RIVETED & FLUSHED WITH PT-1.
4. PT- 2,3&12 FLARED WITH PT-1. AFTER FLARING CHECK MOVEMENT OF PT-2 .
5. PT- 9 IS SCREWED WITH PT-5. CHECK FOR MOVEMENT.
6. PT-15 IS FITTED WITH PT-16 & PT-17 PLACED ABOVE PT-16.
7. PLACE ASSEMBLED PT- 1 ABOVE PT-16. PLACE PT-19,20,21,22 AS SHOWN IN FIG. THEN PUSH AND ROTATE PT-23 & PT.19 SIMULTANEOUSLY .



UN CONTROLLED COPY
 CERTIFIED CORRECT COPY OF APPROVED
 DRAWINGS AT THIS DATE 23/01/24
 DESIGN & DRAWING OFFICE
 ORDNANCE FACTORY, TIRUCHIRAPPALLI-620 016

ITEM NO.	PART NUMBER	QTY.
1	36P 1301 SIGHT HOUSING	1
2	36P 1307 FORE SIGHT SUPPORT	1
3	36P 1308 FORE SIGHT SUPPORT RIVET	1
4	36P 1309 FORE SIGHT	1
5	36P 1315 * BACK SIGHT SUPPORT PLATE	1
6	36P 1316 BACK SIGHT ADJUSTING PLATE FINAL	1
7	36P 1319 BACK SIGHT SUPPORTING PLATE RIVET	1
8	36P 1313 * BACK SIGHT	1
9	36P 1312 * BACK SIGHT SCREW	1
10	36P 1306 SIGHT ADJUSTING PLATE	1
11	36P 1305 SIGHT RING PIN	2
12	36P 1310 * FORE SIGHT SPRING	1
13	36P 1317 SIGHT HOUSING RING	1
14	36P 1314 BACK SIGHT RIVET PIN	1
15	36P 1042 SIGHT WASHER LIMITER	1
16	36P 1041 SIGHT PIN	1
17	36P 1043 STOP SCREW SIGHT	2
18	36P 1311 PENDULAM	1
19	36P 1302 * SIGHT FORK	1
20	36P 1318 * SIGHT SPRING	1
21	36P 1320 SPRING SIGHT FORK	1
22	36P 1304 SIGHT RING WASHER	1
23	36P 1303 SIGHT RING	1

NOTE:-
 PILOT SAMPLE SHOULD BE SUBMITTED
 BEFORE BULK SUPPLY.

DC NO. 06/20 (Item No. 5,8,9,12,19,20 Advanced) 26.10.2020 SIG. & DATE	RE-DRAWN	SIGNATURE & DATE.	SUB: SIGHT ASSY	SCALE NTS
	DRAWN <i>V. Sub</i>	FOR:	OF: TAR UBGL	STORE DRG.NO.
	CHECKED	DES. REF. NO.	DRG. No.: 36P 1300 *	OPERATION NO.
	HOS/D&DO <i>P. Fortan</i>	OFFICER/ PROJECT	OFFICER/ D&DO <i>Ge. K...</i>	SHEETS: 1
	APPROVED ON. 18.08.2020	FT ORDNANCE FACTORY TIRUCHIRAPPALLI-16.	SHEET No.: 1	