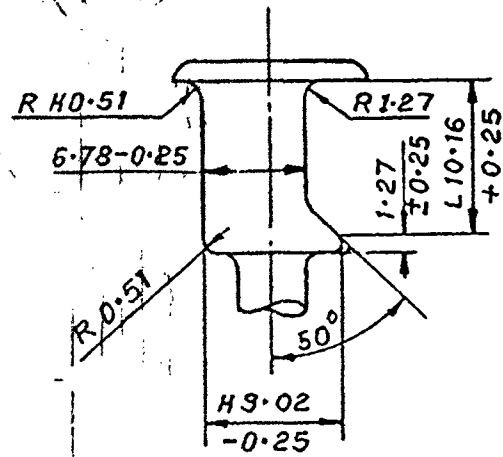


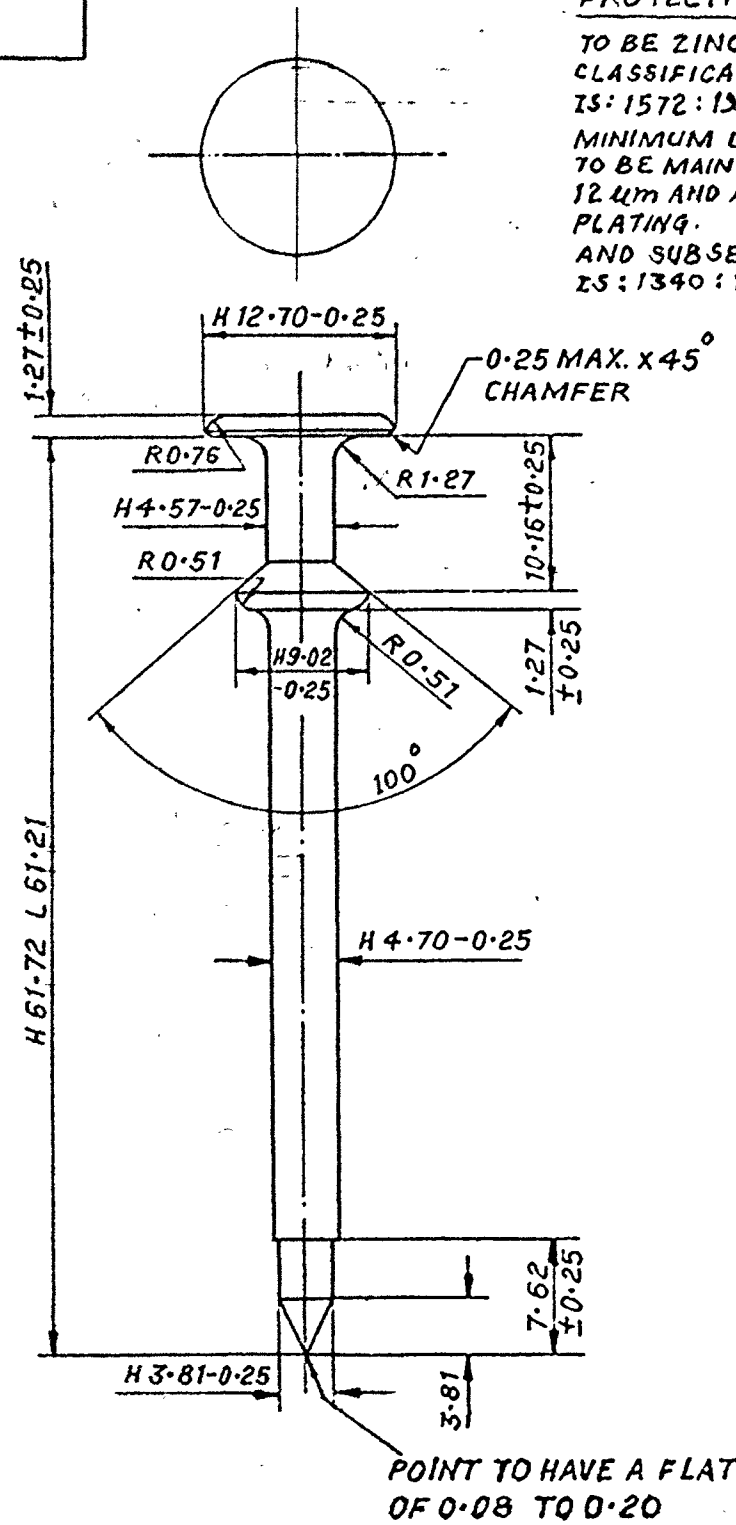
122 X 0

PN 122 X 0 DIMENSIONS ARE IN mm

F D.C.I. 17273-A



ALTERNATIVE METHOD OF MANUFACTURE



PROTECTIVE FINISH:-

TO BE ZINC PLATED ALL OVER TO SPEC. IS: 1573:1986 (LATEST ISSUE) CLASSIFICATION N^o Fe/Zn 12.5 OR ELECTROPLATED WITH CADMIUM TO SPEC. IS: 1572:1986 (LATEST ISSUE) CLASSIFICATION N^o Fe/Cd 12. MINIMUM LOCAL THICKNESS OF 12.5 μm AND AVERAGE THICKNESS OF 18 μm TO BE MAINTAINED FOR ZINC PLATING OR MINIMUM LOCAL THICKNESS OF 12 μm AND AVERAGE THICKNESS OF 18 μm TO BE MAINTAINED FOR CADMIUM PLATING. AND SUBSEQUENTLY CHROMATE PASSIVATED TO SPEC. DEF. 130 OR IS: 1340:1977 (1st REVISION). DIMENSIONS TO APPLY AFTER PLATING.

NOTE:-

TOL. ON UNTOL. DIMENSIONS.
FOR ONE DECIMAL PLACE ± 1.3
FOR TWO OR MORE DECIMAL PLACES ± 0.13

DIMENSIONS TO APPLY AFTER PLATING.

MATERIAL:-

STEEL TO SPEC. BS 970 PT. 1
STEEL GRADE 070 M 20 COLD DRAWN OR
STEEL GRADE 220 M 0.7 COLD DRAWN.

B	07-10-2012	DGQA S.O. VOL-II CHAP 10 PARA 47 (a)	DRG. SCAN & EDIT WITHOUT CHANGE. NEGATIVE & MASTER COPY REPLACED IN SUPERSESSION OF EXISTING DILAPIDATED DRG.			DRN.	CHD.	TRD. HDW	COMP. <i>[Signature]</i>	ASSY. DRG.
			PREVIOUS D.C. Nos. 6-UA, 11330-A, 17273-A, 17794-A, 21168-A, 22115-A, 22968-A, 24667-A, 25168-A, 25339-A, 27029-A, 27197-A, 27538-A, 29959-A, 30649-A, 30973-A, 32224-A, 32326-A, 33107-A, 33601-A, 33768-A, 34789-A, 35434-A, 36887-A & 37263-A.			<i>[Signature]</i> SDI	C.D. MAN	O/C.D.O.	SCALE:- 2/1	IQX 35GE, IQX 41GE
	R.N ^o	DATE	AUTHORITY	REVISION	ZONE	AHSP. SIGN.	D.O.	MATL.:- AS STATED.	EST. MASS:-	DESIGNER'S REF.
								PROTECTIVE FINISH:- AS STATED.	GAUGE SCHD.:-	F.D. 1307
	DRG. SEALED:- 16-1-45									PART N ^o
A	STRIKER									QX 331
										D.S. CAT. N ^o
										AHSP.:- C.Q.A(A) KIRKEE