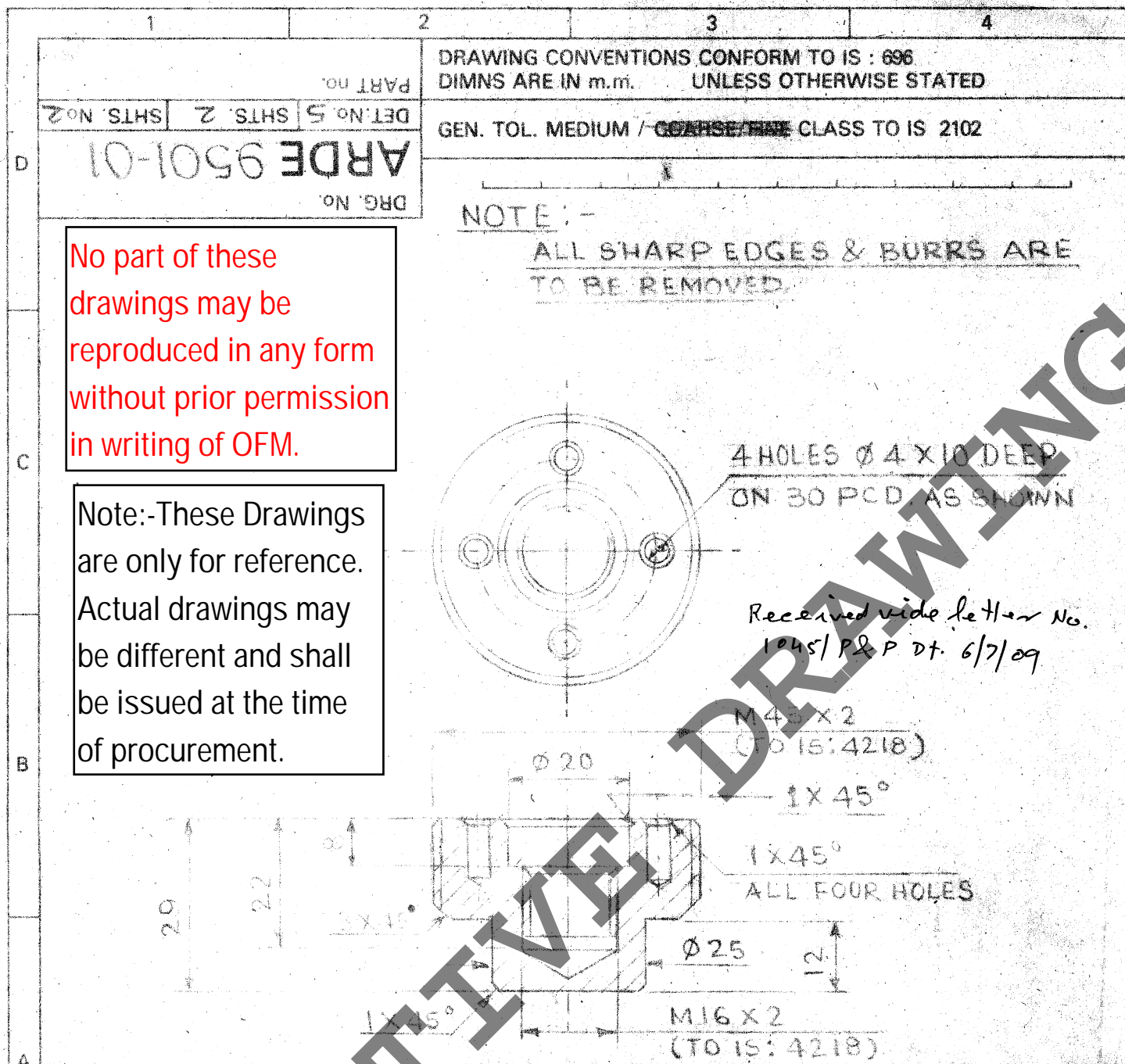


13443002



NOTE :-  
ALL SHARP EDGES & BURRS ARE TO BE REMOVED.

4 HOLES Ø 4 X 10 DEEP  
ON 30 PCD AS SHOWN

Received vide letter No.  
1045/P&P Dt. 6/7/09

M45 x 2  
(TO IS: 4218)

1 x 45°

1 x 45°  
ALL FOUR HOLES

M16 x 2  
(TO IS: 4218)

No part of these drawings may be reproduced in any form without prior permission in writing of OFM.

Note:- These Drawings are only for reference. Actual drawings may be different and shall be issued at the time of procurement.

R. NO.	DATE :	AUTHORITY	BRIEF RECORD	ZONE	CD	GO
						SIGN
DRG. SEALED (PROV.) <i>Jan. in Jan.</i>			CRE (AA)		16 MAY 97.	
DRN. No. 1020/001	CHD.	TRD.	COMP.	ASSY. DRG. ARDE 9501-01/1		
CD	PASSED	SCALE: 1:1		DESIGN AUTHORITY		
APPROVED SCE <i>[Signature]</i>		EST. MASS:		ARDE PUNE-411 021		
(P. PERUMAL)		GAUGE SCHD :				
FOR DIRECTOR		DATE: 23/10/96				
MATERIAL: STAINLESS STEEL TO IS: 6527						
07 Cr 10 Ni 9						
PROTECTIVE FINISH :				DRG. No.		
TITLE :				ARDE 9501-01		
				DET. No. 5   SHTS. 2   SHT. No. 2		
				PART No.		
				D.S.CAT.No.		
				A.H.S.P.		

TOT

FINISHING  
(FOR LUG HOUSING)

Supersedes Drg. prov. sealed on 20 Jun 95.