

Maini 7490315601 R343

2

DWG NO 077901A-00

SH 1

1

SHEET REV RECORD  
ALL SHEETS ARE THE SAME REVISION

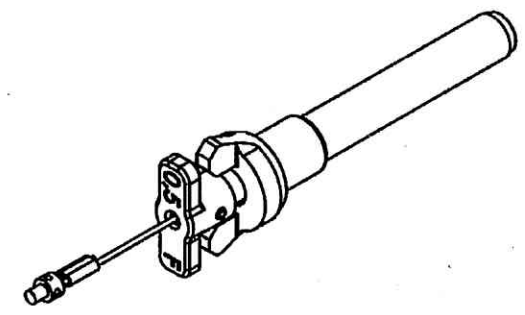
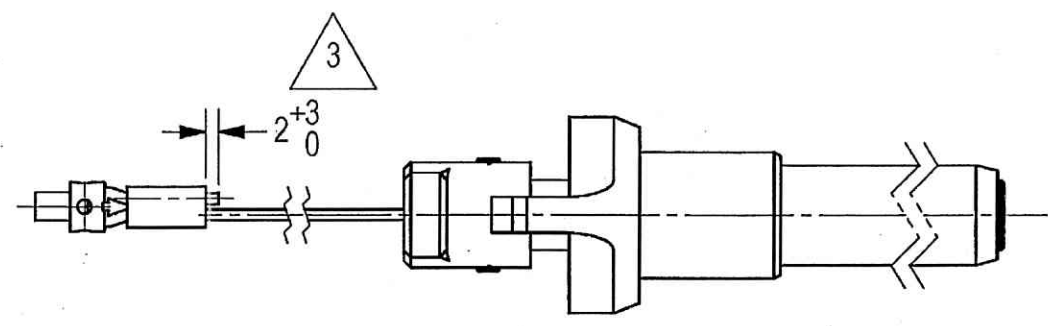
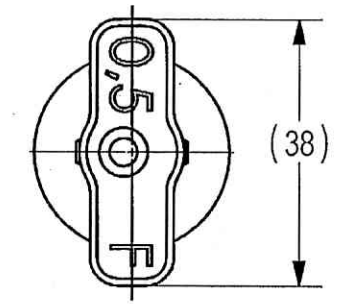
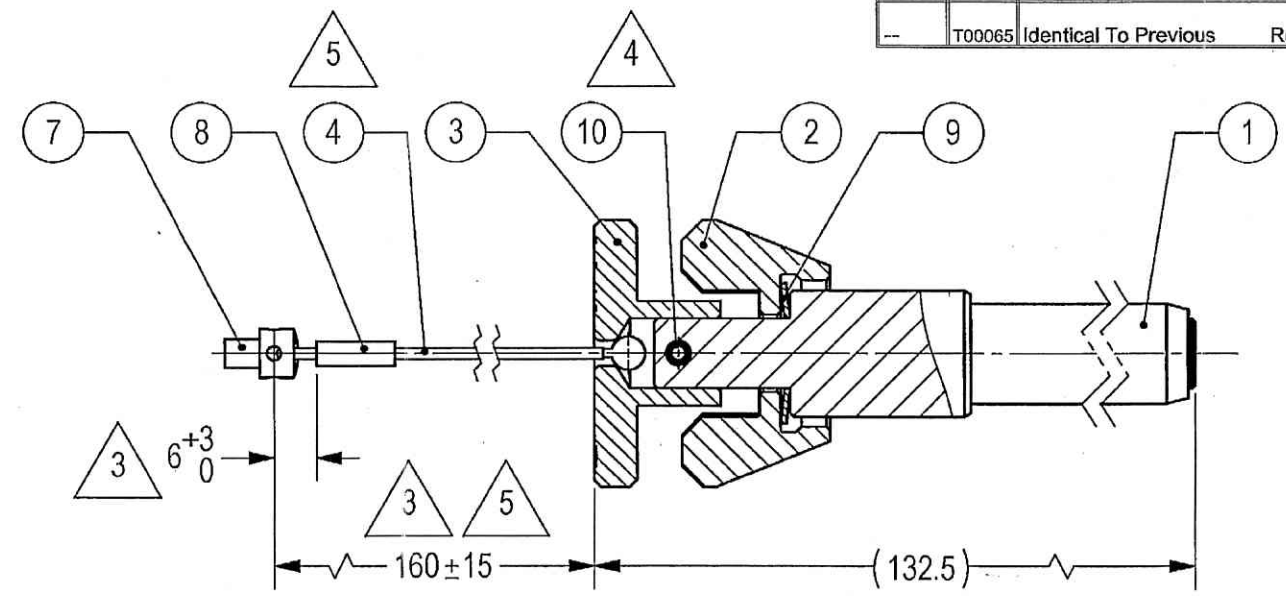
REVISION RECORD

REV	ECO	DESCRIPTION	DATE	APVD	
01		Freeze	01-Dec-13		
02	2 Rework	Freeze	16-Mar-14	M. Levin	
03		Freeze	11-May-14	M. Levin	
04		Restricted	27-Aug-14	L. Goldshtein	
--	T00065	Identical To Previous	Released	09-Apr-18	L. Goldshtein

THIS DOCUMENT AND THE INFORMATION CONTAINED IN IT ARE PROPRIETARY AND CONFIDENTIAL TO OFT. NO PERSON OR ENTITY IS ALLOWED TO COPY, REPRINT, REPRODUCE OR PUBLISH ANY PART OF THIS DOCUMENT, NOR DISCLOSE ITS CONTENTS TO OTHERS, NOR MAKE ANY USE OF IT, NOR ALLOW OR ASSIST OTHERS TO MAKE ANY USE OF IT UNLESS BY THE PRIOR WRITTEN EXPRESS AUTHORIZATION OF OFT AND THEN ONLY TO THE EXTENT AUTHORIZED.  
COPYRIGHT-OFT.

NOTES:

- INTERPRET THIS DRAWING IAW ASME Y14.100M.
- UNLESS OTHERWISE SPECIFIED THE REQUIREMENTS OF MIL-HDBK-454 APPLY.
- ALL DIMENSIONS ARE FOR REFERENCE ONLY, EXCLUDING DEFINITION.
- LOCKING F/N 10 BY F/N 12.
- ADAPT LENGHT OF F/N 4 ACCORDING TO THIS DRAWING.
- PARENTHEICAL FIGURES ARE FOR REFERENCE ONLY.
- QUALITY ASSURANCE PROVISIONS:  
7.1. QUALITY ASSURANCE PROVISIONS FOR THIS ITEM PER RDMQD00012P.
- PACKAGING AND PACKING:  
THE FINISHED PART SHALL BE PRESERVED AND PACKAGED IN ACCORDANCE WITH MANUFACTURER'S BEST COMMERCIAL PRACTICE.
- IDENTIFY PER MIL-STD-130 PARA 4.1.B, BY LABELING ITS CONTAINER WITH THE PART NUMBER. CHARACTERS MINIMUM TEXT HEIGHT 1.25 MM.



(WEIGHT APPROX.: 0.23 Kg)

UN CONTROLLED COPY  
CERTIFIED CORRECT COPY  
OF APPROVED DRAWINGS  
AT THIS DATE 07-01-2021

Design & Drawing Office  
Ordnance Factory,  
Tiruchirappalli-620016

SEE SEPARATE PARTS LIST

UNLESS OTHERWISE SPECIFIED		SIGNATURE	DATE	<b>ORDNANCE FACTORY</b> TIRUCHIRAPPALLI	
DIMENSIONS ARE IN MM PER ASME Y14.5-2009		DRAWN	24-12-20		
TOLERANCES		CHECKED		TITLE	
LINEAR	ANGULAR	HOS/DDO	21/12/20	PIN FRONT 1 ASSY	
1st ANGLE PROJECTION		OFFICER/PRODN		SIZE	CAGE CODE
		OFFICER/OC		B	2291A
SURFACE TEXTURE IN Micro INCH		OFFICER/DDO	21/12/20	DWG NO	077901A-00
PROJECT OFFICER				SCALE	1:1
				AUTOMATED DRAWING (SW)	SHEET 1 OF 1
PLM Control 02		EPDM DRAWING REV 01	EPDM MODEL REV WIP	EPDM MODEL STATUS 077901A-00	EPDM MODEL NAME PIN_FRONT_1_ASSY

OFT

ASSEMBLY PARTS LIST

Assembly Parts List For: 077901A-00

Rev: -

Status: Released

Description: PIN FRONT 1 ASSY

FN	CMD	PART NUM	ECO	DESCRIPTION	MB	QTY	U/M	REF. DES./REMARKS	MFG. PN / CUSTOMER	LA	LI
1	MP	077915A-00		PIN LOCKING FRONT 1	M	1	Each				
2	MP	077910A-00		NUT SPECIAL 1	M	1	Each				
3	MP	077905A-00		HANDLE FRONT 1	M	1	Each				
4	MH	077919A-00		WIRE SAFETY	P	1	Each				
7	HO	00083604N		SCREW FILHD SLOT CRES M4X5	P	1	Each		42116-DIN 404-M4X5-A1-50		
8	HO	99941817M		SLEEVE SWAGE CRES 1/16 DIA WIR	P	1	Each		46666-MS51844-62		
9	HO	99946558M		WASHER SPRING CRES 20.0X1	P	1	Each		51319-20X10.2X0.8-INOX1.4310		
10	HO	99931983M		PIN SPRING CRES 3X16MM SL	P	1	Each		42116-DIN 1481-3X16-A2		
12	YR	02010074K		ADHESIVE, THREADLOCKING	P	3.000	CC		43201-OMNIFIT 100M		

UN CONTROLLED COPY  
CERTIFIED CORRECT COPY  
OF APPROVED DRAWINGS  
AT THIS DATE 07-01-2021

*[Signature]*  
Design & Drawing Office  
Ordnance Factory,  
Viruchirappalli-620016

THIS DOCUMENT AND THE INFORMATION CONTAINED IN IT ARE PROPRIETARY AND CONFIDENTIAL TO OFT. NO PERSON OR ENTITY IS ALLOWED TO COPY, REPRINT, REPRODUCE OR PUBLISH ANY PART OF THIS DOCUMENT, NOR DISCLOSE ITS CONTENTS TO OTHERS, NOR MAKE ANY USE OF IT, NOR ALLOW OR ASSIST OTHERS TO MAKE ANY USE OF IT UNLESS BY THE PRIOR WRITTEN EXPRESS AUTHORIZATION OF OFT AND THEN ONLY TO THE EXTENT AUTHORIZED.  
COPYRIGHT-OFT.

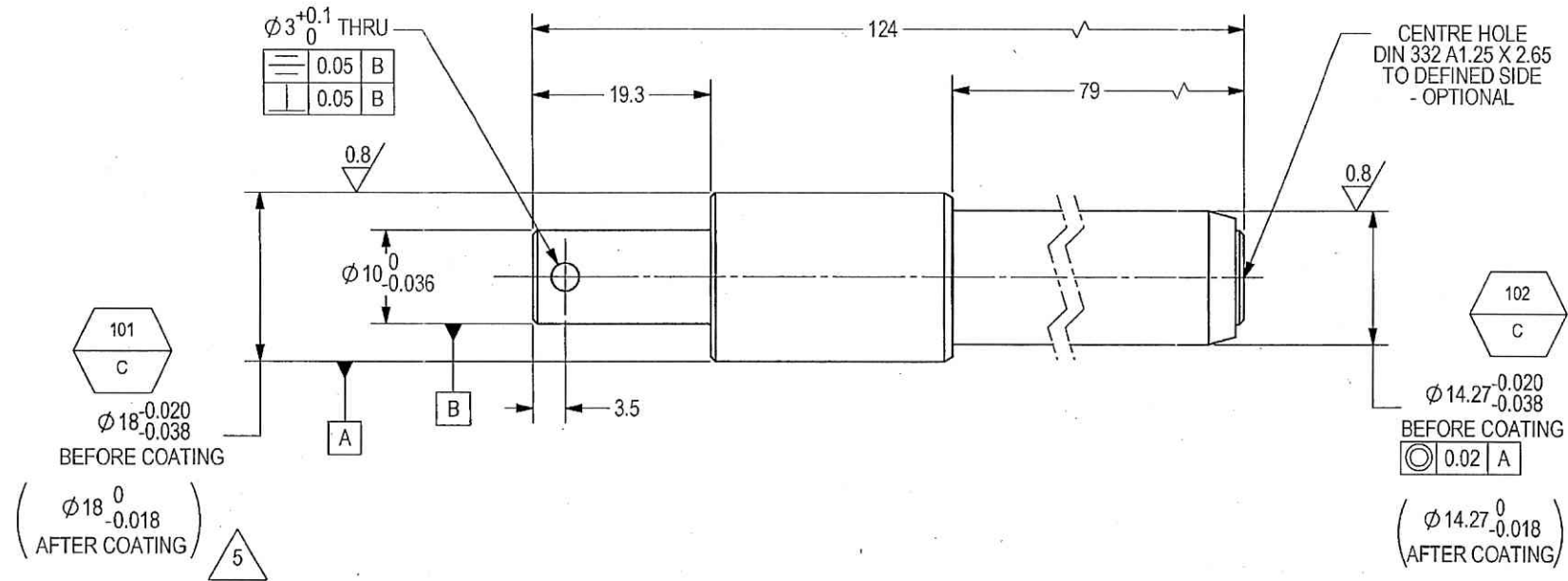
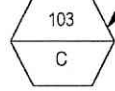
SHEET REV STATUS  
ALL SHEETS ARE THE SAME REVISION

REVISION RECORD				
REV	ECO	DESCRIPTION	DATE	APVD
01		Freeze	01-Dec-13	
02		Restricted	09-Jun-14	L. Goldshtein
03	VY57/00	Restricted	16-Sep-14	D. Nave
--	T00065	Identical To Previous	09-Apr-18	L. Goldshtein

NOTES:

- INTERPRET THIS DRAWING IAW ASME Y14.100M.
- MATERIAL: ALLOY STEEL BAR RND SAE 4130 NORMALIZED PER SAE-AMS-S-6758 OR SAE 4340 NORMALIZED PER SAE-AMS-S-5000.
- UNLESS OTHERWISE SPECIFIED, UNDEFINED MACHINED FILLET RADII SHALL BE 0.2...0.3.
- DEBURR AND REMOVE SHARP EDGES, APPROX. 0.2X45 Deg.
- ALL DIMENSIONS ARE AFTER HEAT TREATMENT AND BEFORE COATING, EXCEPT DEFINED.
- GENERAL TOLERANCES ACCORDING TO ISO 2768-m.
- HEAT TREATMENT TO 35±3 HRC PER AMS 2759/1.
- COATING: A DRY FILM LUBRICATION IN A FLUOROPOLYMER ORGANIC RESIN CLASS 2 COLOR MATTE BLACK TYPE I; 5-13 MICRON THICK PER VS-1-3-1-165 (OR EQUIVALENT).
- QUALITY ASSURANCE PROVISIONS:
  - QUALITY ASSURANCE PROVISIONS FOR THIS ITEM PER RDMQD00012P.
  - MAJOR CHARACTERISTICS NRS 101 TO 103.
- PARENTHEICAL FIGURES ARE FOR REFERENCE ONLY.
- PACKAGING AND PACKING: THE FINISHED PART SHALL BE PRESERVED AND PACKAGED IN ACCORDANCE WITH MANUFACTURER'S BEST COMMERCIAL PRACTICE.
- IDENTIFY PER MIL-STD-130 PARA 4.1.B. BY LABELING ITS CONTAINER WITH THE PART NUMBER. CHARACTERS MINIMUM TEXT HEIGHT 1.25 MM.

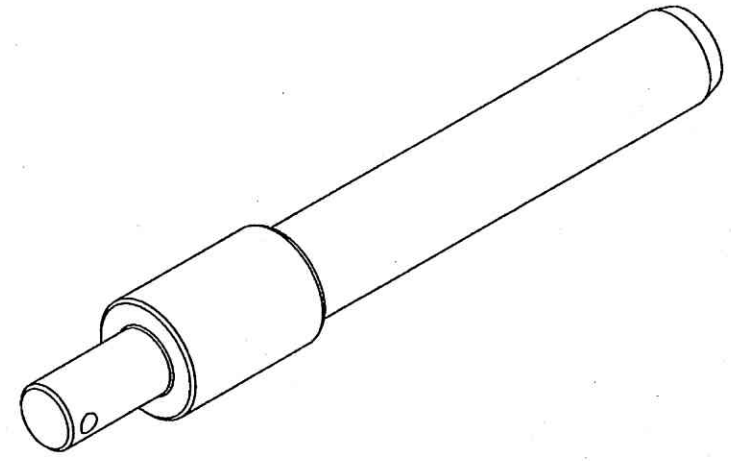
TEST ACCORDING TO THICKNESS COUPON



UN CONTROLLED COPY

CERTIFIED CORRECT COPY OF APPROVED DRAWINGS AT THIS DATE 02.01.2021

Design & Drawing Office  
Ordnance Factory,  
Tiruchirappalli-620016



(WEIGHT APPROX.: 0.16 Kg.)

1.6/ (0.8/)

SEE ATTACHED MEDIA

UNLESS OTHERWISE SPECIFIED		SIGNATURE	DATE	ORDNANCE FACTORY TIRUCHIRAPPALLI	
DIMENSIONS ARE IN MM PER ASME Y14.5-2009		DRAWN	21/12	TITLE	
TOLERANCES		CHECKED		FOR: PIN FRONT 1 ASSY	
LINEAR	ANGULAR	HOS/DDO	21/12	OF: 12.7MM SRCG	
SEE NOTE 5	SEE NOTE 5	OFFICER/PRODN		SIZE	CAGE CODE
1st ANGLE PROJECTION		OFFICER/QC		C	2291A
SURFACE TEXTURE IN Micro Meter		OFFICER/DDO		DWG NO	077915A-00
				SCALE	2:1
				AUTOMATED DRAWING (SW)	
				SHEET 1 OF 1	

DWG NO 077915A-00

SH 1

2

DWG NO 077910A-00

SH 1

1

THIS DOCUMENT AND THE INFORMATION CONTAINED IN IT ARE PROPRIETARY AND CONFIDENTIAL TO OFT. NO PERSON OR ENTITY IS ALLOWED TO COPY, REPRINT, REPRODUCE OR PUBLISH ANY PART OF THIS DOCUMENT, NOR DISCLOSE ITS CONTENTS TO OTHERS, NOR MAKE ANY USE OF IT, NOR ALLOW OR ASSIST OTHERS TO MAKE ANY USE OF IT UNLESS BY THE PRIOR WRITTEN EXPRESS AUTHORIZATION OF OFT AND THEN ONLY TO THE EXTENT AUTHORIZED. COPYRIGHT-OFT.

SHEET REV RECORD

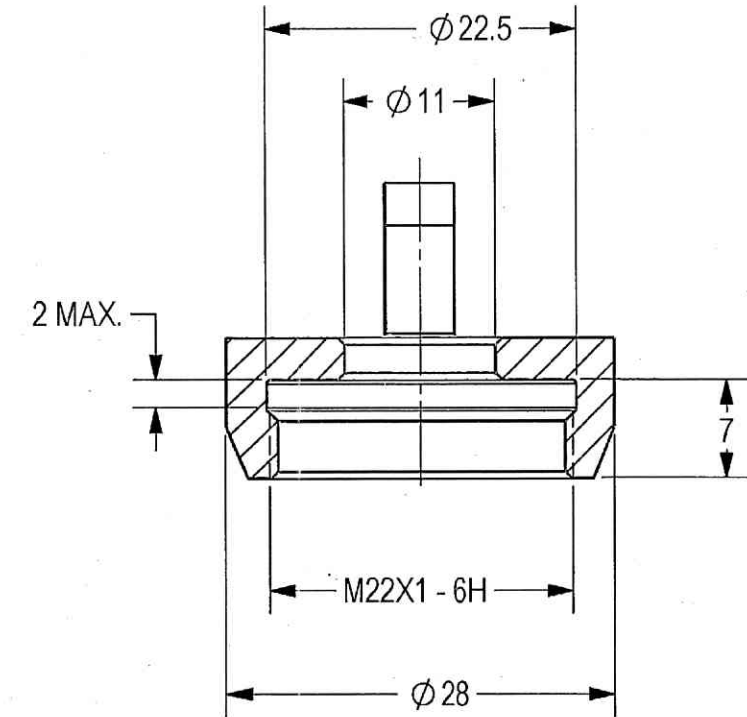
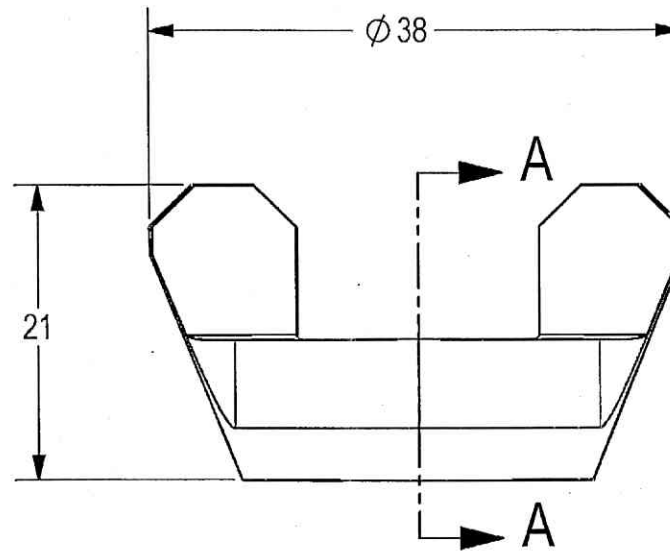
ALL SHEETS ARE THE SAME REVISION

REVISION RECORD

REV	ECO	DESCRIPTION	DATE	APVD
01		Freeze	01-Dec-13	
02		Restricted	19-Jun-14	L. Goldshtein
03	VY57/00	Restricted	16-Sep-14	D. Nave
--	T00065	Identical To Previous Released	09-Apr-18	L. Goldshtein

NOTES :

- INTERPRET THIS DRAWING IAW ASME Y14.100M.
- MATERIAL: ALLOY STEEL BAR RND SAE 4130 NORMALIZED PER SAE-AMS-S-6758 OR SAE 4340 NORMALIZED PER SAE-AMS-S-5000.
- UNLESS OTHERWISE SPECIFIED, UNDEFINED MACHINED FILLET RADII SHALL BE 0.2...0.3.
- DEBURR AND REMOVE SHARP EDGES, APPROX. 0.2X45 Deg.
- GENERAL TOLERANCES ACCORDING TO ISO 2768-m.
- HEAT TREATMENT TO 35 ± 3 HRC PER AMS 2759/1.
- COATING: A DRY FILM LUBRICATION IN A FLUOROPOLYMER ORGANIC RESIN CLASS 2 COLOR MATTE BLACK TYPE I; 5-13 MICRON THICK PER VS-1-3-1-165 (OR EQUIVALENT).
- QUALITY ASSURANCE PROVISIONS:
  - QUALITY ASSURANCE PROVISIONS FOR THIS ITEM PER RDMQD00012P.
- PARENTHEICAL FIGURES ARE FOR REFERENCE ONLY.
- PACKAGING AND PACKING: THE FINISHED PART SHALL BE PRESERVED AND PACKAGED IN ACCORDANCE WITH MANUFACTURER'S BEST COMMERCIAL PRACTICE.
- IDENTIFY PER MIL-STD-130 PARA 4.1.B, BY LABELING ITS CONTAINER WITH THE PART NUMBER. CHARACTERS MINIMUM TEXT HEIGHT 1.25 MM.



SECTION A-A

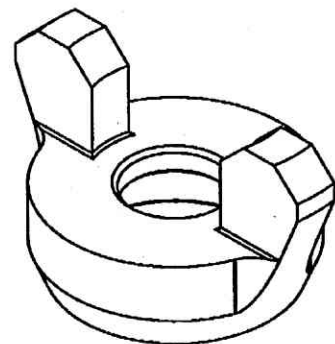
UN CONTROLLED COPY

CERTIFIED CORRECT COPY OF APPROVED DRAWINGS AT THIS DATE 07-01-2021

Design & Drawing Office, Ordnance Factory, Tiruchirappalli-620014

3.2

SEE ATTACHED MEDIA



(WEIGHT APPROX.: 0.03 Kg.)

UNLESS OTHERWISE SPECIFIED		SIGNATURE	DATE	<b>ORDNANCE FACTORY</b> TIRUCHIRAPPALLI	
DIMENSIONS ARE IN MM PER ASME Y14.5M-1994		DRAWN	21/12/21		
TOLERANCES		CHECKED		TITLE	
LINEAR	ANGULAR	HOS/DDO	21/12/21	FOR: PIN FRONT 1 ASSY	
SEE NOTE 5	SEE NOTR 5			OF: 12.7MM SRGG	
1st ANGLE PROJECTION		OFFICER/PRODN		SIZE	CAGE CODE
		OFFICER/QC		B	2291A
SURFACE TEXTURE IN Micro Meter		OFFICER/DDO	21/12/21	DWG NO	077910A-00
PROJECT OFFICER				SCALE	2:1
				AUTOMATED DRAWING (SW)	
				SHEET	1 OF 1

PLM Control

1

2

SHEET REV RECORD

ALL SHEETS ARE THE SAME REVISION

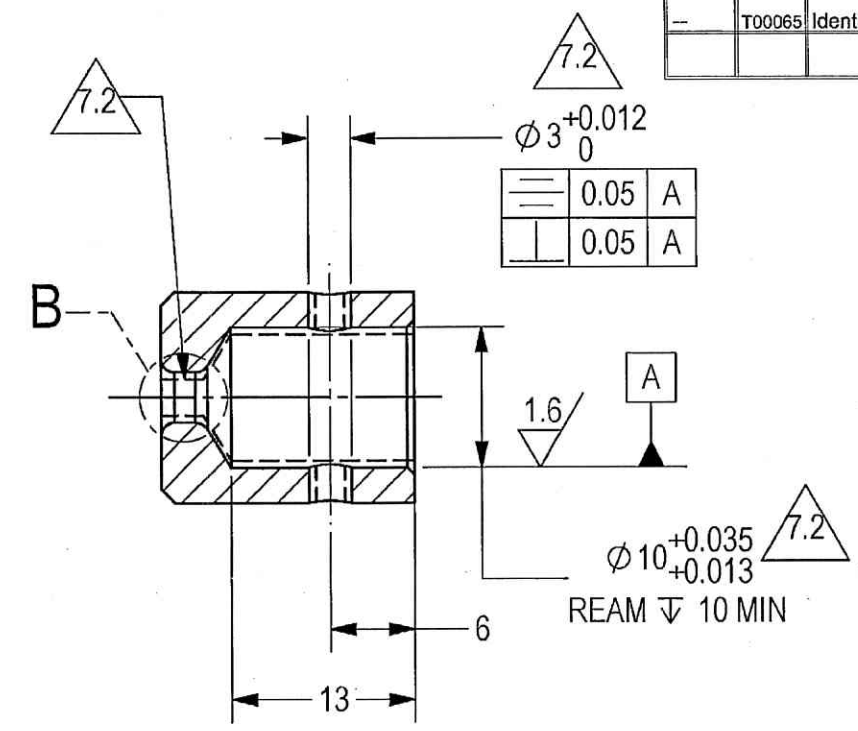
REVISION RECORD

REV	ECO	DESCRIPTION	DATE	APVD
01		2 Rework Freeze	01-Dec-13	
02		Freeze	18-May-14	M. Levin
03		Restricted	23-Jul-14	L. Goldshtein
-	T00065	Identical To Previous Released	09-Apr-18	L. Goldshtein

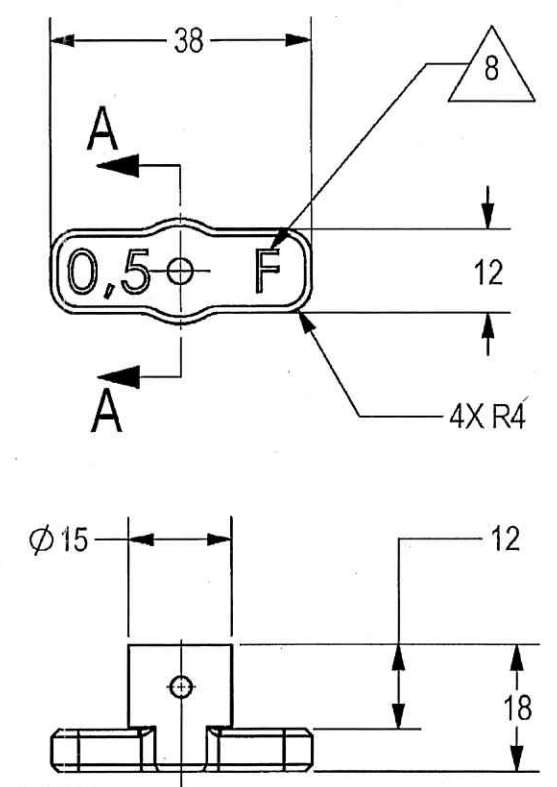
THIS DOCUMENT AND THE INFORMATION CONTAINED IN IT ARE PROPRIETARY AND CONFIDENTIAL TO OFT. NO PERSON OR ENTITY IS ALLOWED TO COPY, REPRINT, REPRODUCE OR PUBLISH ANY PART OF THIS DOCUMENT, NOR DISCLOSE ITS CONTENTS TO OTHERS, NOR MAKE ANY USE OF IT, NOR ALLOW OR ASSIST OTHERS TO MAKE ANY USE OF IT UNLESS BY THE PRIOR WRITTEN EXPRESS AUTHORIZATION OF OFT AND THEN ONLY TO THE EXTENT AUTHORIZED. COPYRIGHT-OFT.

NOTES:

- INTERPRET THIS DRAWING IAW ASME Y14.100M.
- MATERIAL: CRES ROD 303 PER ASTM-A-582.
- UNLESS OTHERWISE SPECIFIED, UNDEFINED MACHINED FILLET RADII SHALL BE 0.2...0.3.
- DEBURR AND REMOVE SHARP EDGES, APPROX. 0.2X45 Deg.
- ALL DIMENSIONS ARE BEFORE COATING.
- GENERAL TOLERANCES ACCORDING TO ISO 2768-m.
- FINISH:
  - A DRY FILM LUBRICATION IN A FLUOROPOLYMER ORGANIC RESIN CLASS 2 COLOR MATTE BLACK TYPE I; 5-13 MICRON THICK PER VS-1-3-1-165 (OR EQUIVALENT).
- AREA AND HOLE MARKED BY "-----" PROTECT AFTER PHOSPHATE.
- ENGRAVE CHARACTERS 0.3 MM DEEP USE ATTACHED DXF FILE. FILL WITH EPOXY INK PER A-A-56032 TYPE I, COLOR WHITE #17875 PER FED-STD-595.
- QUALITY ASSURANCE PROVISIONS:
  - QUALITY ASSURANCE PROVISIONS FOR THIS ITEM PER RDMQD00012P.
- PARENTHEICAL FIGURES ARE FOR REFERENCE ONLY.
- PACKAGING AND PACKING: THE FINISHED PART SHALL BE PRESERVED AND PACKAGED IN ACCORDANCE WITH MANUFACTURER'S BEST COMMERCIAL PRACTICE.
- IDENTIFY PER MIL-STD-130 PARA 4.1.B, BY LABELING ITS CONTAINER WITH THE PART NUMBER. CHARACTERS MINIMUM TEXT HEIGHT 1.25 MM.



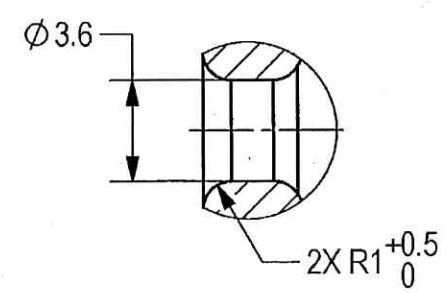
SECTION A-A  
SCALE 2 : 1



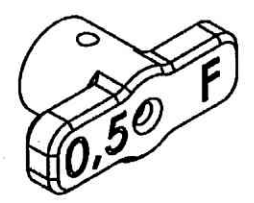
UN CONTROLLED COPY  
CERTIFIED CORRECT COPY  
OF APPROVED DRAWINGS  
AT THIS DATE 07.01.2021

Design & Drawing Office  
Ordnance Factory,  
Tiruchirappalli-620016

SEE ATTACHED MEDIA



DETAIL B  
SCALE 4 : 1



(WEIGHT : 0.042 Kg APPROX.)

UNLESS OTHERWISE SPECIFIED		SIGNATURE	DATE
DIMENSIONS ARE IN MM PER ASME Y14.5M -1994		DRAWN	2/1/21
TOLERANCES		CHECKED	
LINEAR	ANGULAR	HOS/DDO	2/1/21
SEE NOTE 6	SEE NOTE 6	OFFICER/PRODN	
1st ANGLE PROJECTION		OFFICER/QC	
SURFACE TEXTURE IN Micro Meter		OFFICER/DDO	4/1/21

ORDNANCE FACTORY TIRUCHIRAPPALLI			
TITLE		FOR: PIN FRONT 1 ASSY	
HANDLE FRONT 1		OF: 12.7MM SRCG	
SIZE	CAGE CODE	DWG NO	
B	2291A	077905A-00	--
SCALE 1:1	AUTOMATED DRAWING (SW)	SHEET 1 OF 1	

PROJECT OFFICER

2

DWG NO 077919A-00

SH 1

1

THIS DOCUMENT AND THE INFORMATION CONTAINED IN IT ARE PROPRIETARY AND CONFIDENTIAL TO OFT. NO PERSON OR ENTITY IS ALLOWED TO COPY, REPRINT, REPRODUCE OR PUBLISH ANY PART OF THIS DOCUMENT, NOR DISCLOSE ITS CONTENTS TO OTHERS, NOR MAKE ANY USE OF IT, NOR ALLOW OR ASSIST OTHERS TO MAKE ANY USE OF IT UNLESS BY THE PRIOR WRITTEN EXPRESS AUTHORIZATION OF OFT AND THEN ONLY TO THE EXTENT AUTHORIZED. COPYRIGHT-OFT.

SHEET REV RECORD

ALL SHEETS ARE THE SAME REVISION

REVISION RECORD

REV	ECO	DESCRIPTION	DATE	APVD
01		Freeze	01-Dec-13	
02		Restricted	30-Jul-14	L. Goldshtein
--		Identical To Previous Released	09-Apr-18	L. Goldshtein

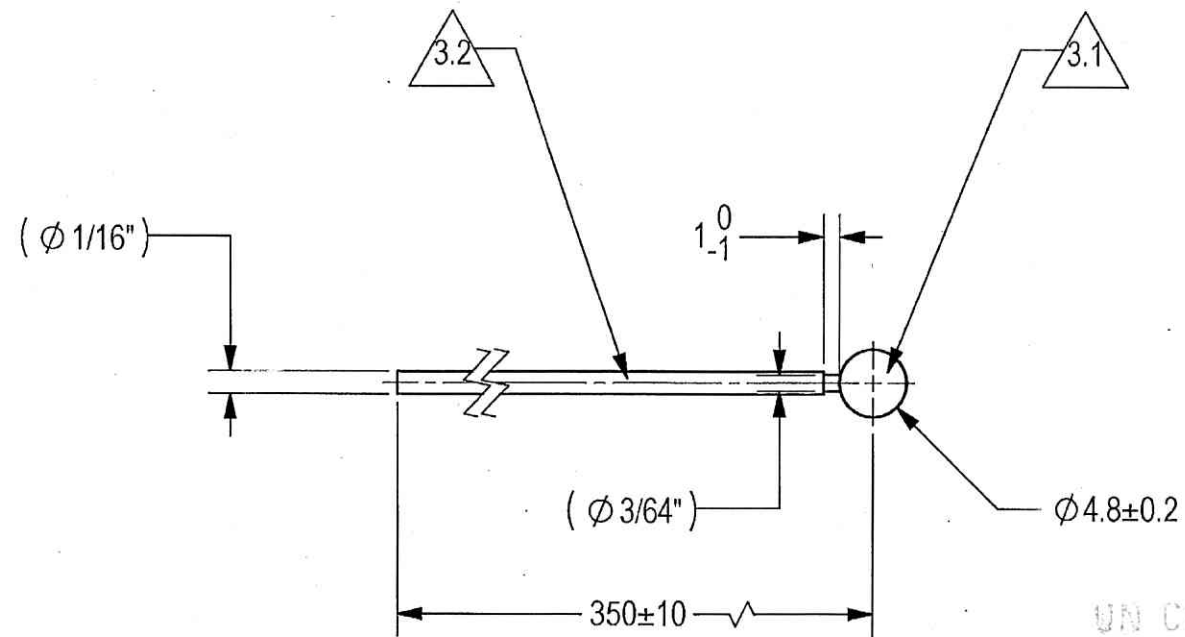
NOTES:

1. INTERPRET THIS DRAWING IAW ASME Y14.100M.
2. MINIMUM WIRE ASSY BREAKING STRENGTH 20 Kg.
3. MATERIAL OF PARTS:

3.1 BALL - STAINLESS STEEL BY SUPPLIER.

3.2 WIRE - WIRE ROPE 3/64 CRES NYL JKT 1/16 M83420/4-001.

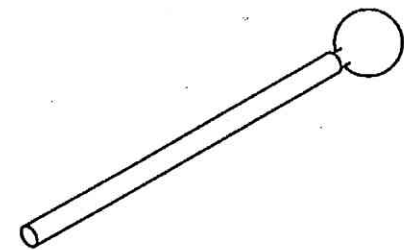
4. PARENTHEICAL FIGURES ARE FOR REFERENCE ONLY.
5. PACKAGING AND PACKING:  
THE FINISHED PART SHALL BE PRESERVED AND PACKAGED IN ACCORDANCE WITH MANUFACTURER'S COMMERCIAL PRACTICE.
6. IDENTIFY PER MIL-STD-130 PARA 4.1.B, BY LABELING ITS CONTAINER WITH THE PART NUMBER. CHARACTERS MINIMUM TEXT HEIGHT 1.25 MM.
7. APPROVED SOURCE OF SUPPLY:  
OTTO PERL.  
P.O. BOX 33770, HAATZMAUT ROAD, 128, HAIFA, ISRAEL.  
TEL. 04-8520135, FAX. 04-8529667.  
VENDOR NO. 1010315.



UN CONTROLLED COPY  
CERTIFIED CORRECT COPY  
OF APPROVED DRAWINGS  
AT THIS DATE 07.01.2021

Design & Drawing Office  
Ordnance Factory,  
Tiruchirappalli-620014

SOURCE CONTROL DRAWING



(WEIGHT APPROX.: 0.01 Kg)

UNLESS OTHERWISE SPECIFIED		SIGNATURE	DATE	<b>ORDNANCE FACTORY</b> TIRUCHIRAPPALLI	
DIMENSIONS ARE IN MM PER ASME Y14.5-2009		DRAWN	2/1/21		
TOLERANCES		CHECKED		TITLE	
LINEAR	ANGULAR	HOS/DDO	2/1/21	FOR: PIN FRONT 1 & REAR 1 ASSY	
1st. ANGLE PROJECTION		OFFICER/PRODN		OF: 12.7MM SRCG	
SURFACE TEXTURE IN MicroMeter		OFFICER/QC		TITLE	
		OFFICER/DDO	2/1/21	SIZE	CAGE CODE
				B	2291A
				DWG NO	
				077919A-00	
				SCALE	2:1
				AUTOMATED DRAWING (SW)	
				SHEET 1 OF 1	
PROJECT OFFICER		PLM Control 01		WIP	
		EPDM MODEL REV		EPDM MODEL NAME	
		077919A-00		WIRE SAFETY	

2