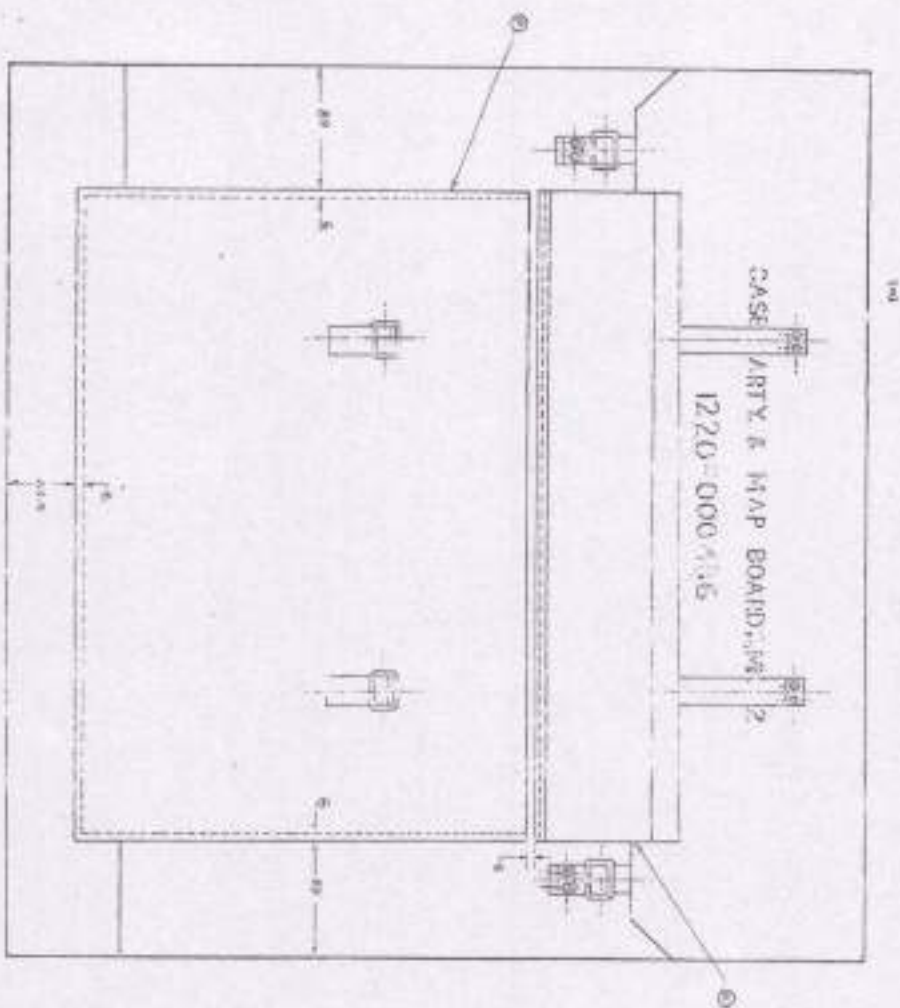


FOR THE OFFICE OF INVESTIGATION - FBI - AT CHICAGO, ILLINOIS
 THIS APPLICABLE PRODUCTION
 OPERATIONAL AND IN USE

SCALED 1:100 X 1
 REVISIONS
 DATE



NOTE:
 FOR INFORMATION OF THE OFFICE OF INVESTIGATION - FBI - AT CHICAGO, ILLINOIS
 A 100mm pocket is in the board of model 1220-000-4145

CASE, ARTHELY AND MAP BOARD, MKC 2

SHOWING POSITION OF POCKET

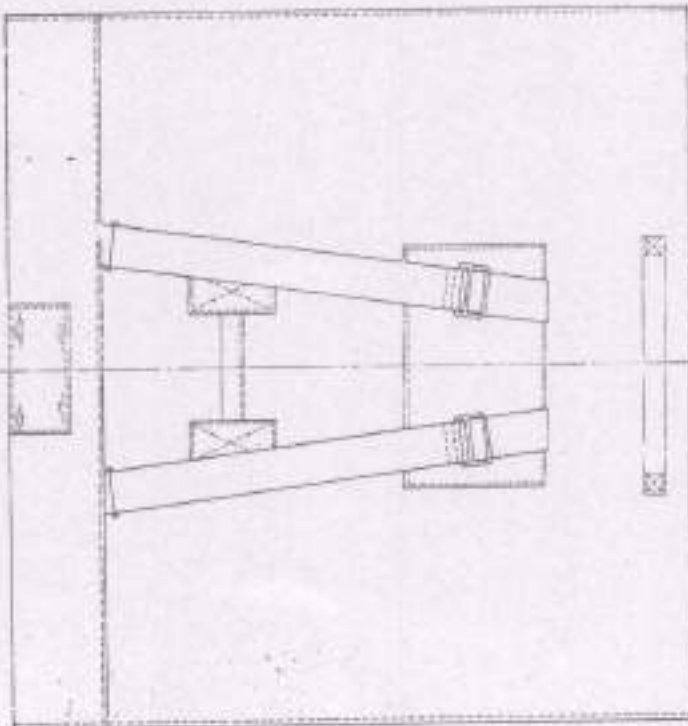
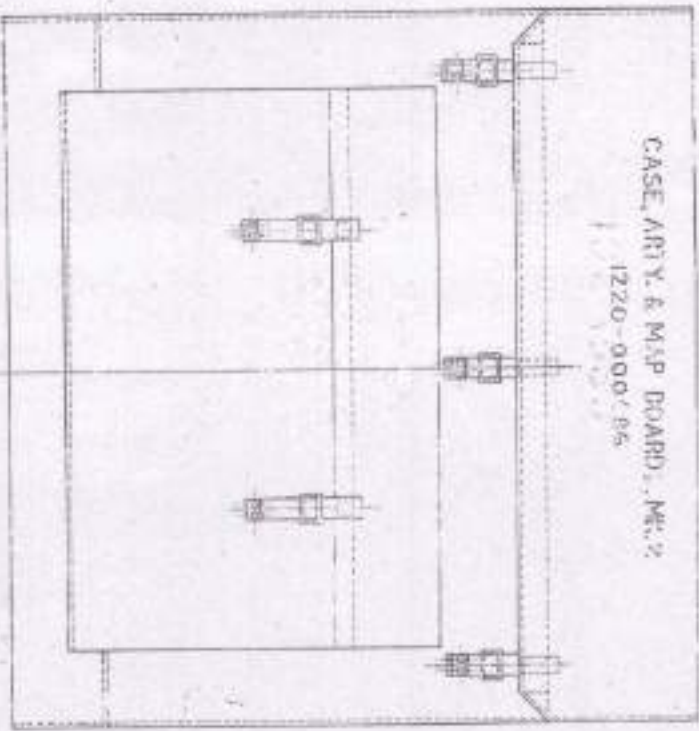
FOR TRADE COPY
 Date of issue 2/1/68
 Ray

TRADED FROM PRODUCE POINT
 MAP TO SCALE

TRADE AT CHICAGO
 PRODUCE POINT
 1511 N. LA SALLE ST.
 CHICAGO, ILLINOIS 60610

CLASSIFICATION: CIA (C) 1968
 DATE OF ORIGIN: 309985
 DATE OF ACQUISITION: 1/11/81
 DATE OF DECLASSIFICATION: 11/11/91
 DATE OF REVIEW: 11/11/91
 DATE OF RECLASSIFICATION: 11/11/91

101



NOTE:
All mating surfaces must be clean and free of oil, dirt, or grease. Do not use mineral oil for lubrication.
Do not allow contaminants to be introduced.

FOR INFO ONLY

CASE, ARTillery and M101 BOARD, MK. 2.

FOR READ: ON
Date of Issue: 04/01/68
by: Kym

FOR INFORMATION OF ENGINEERING & DESIGN DEPT. CONTRACTORS FOR THE
DEVELOPMENT OF THIS PROJECT
SPECIFICATIONS AND DRAWINGS



STANDARD ITEM 43
APPROPRIATE

DATE	BY	REVISION

CIA (C) 1968

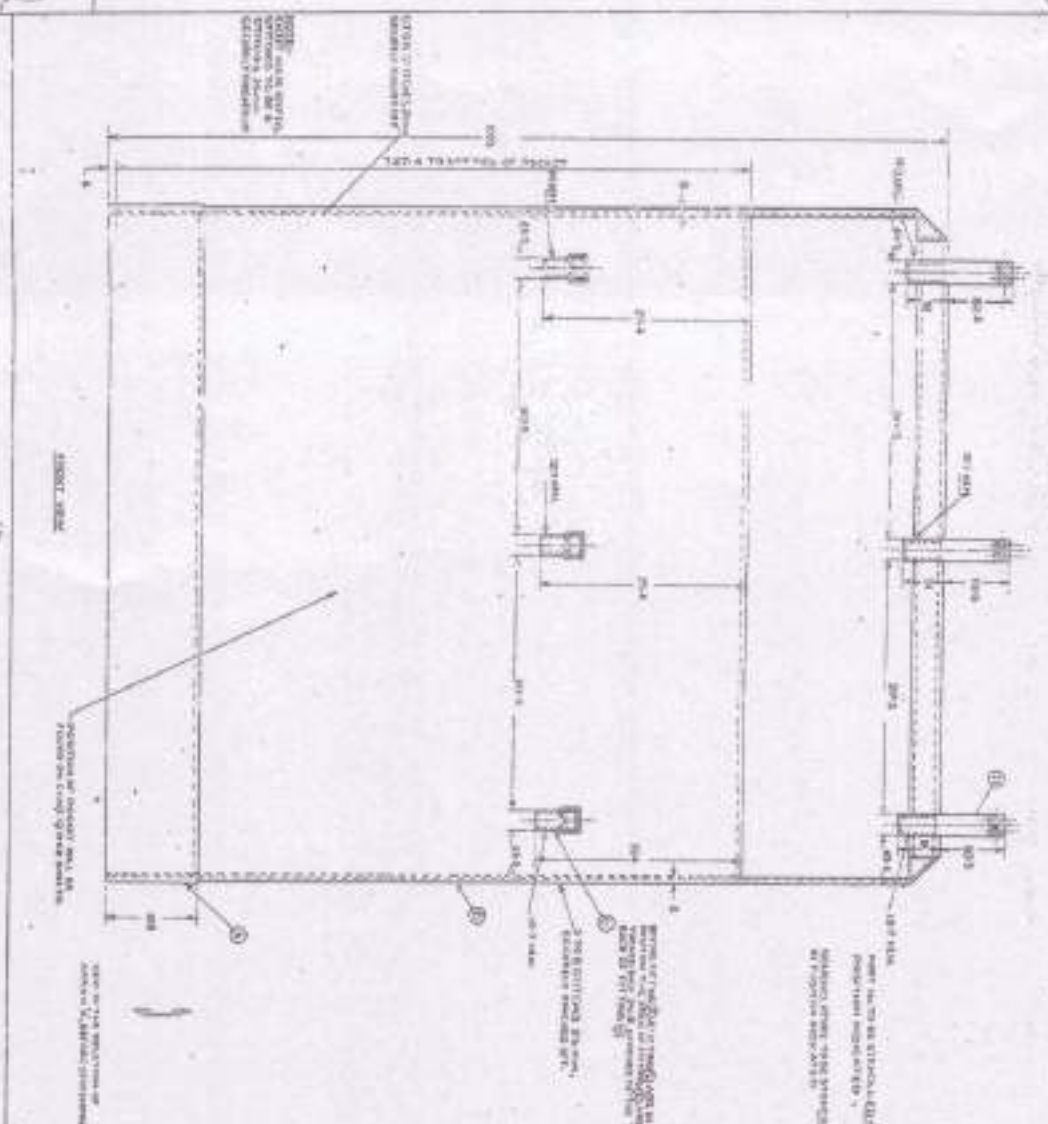
FORM 101 1-64
THIS IS NOT A
REPLACEMENT
FOR THE
SERIALS

FORM 101 1-64
THIS IS NOT A
REPLACEMENT
FOR THE
SERIALS

FORM 101 1-64
THIS IS NOT A
REPLACEMENT
FOR THE
SERIALS

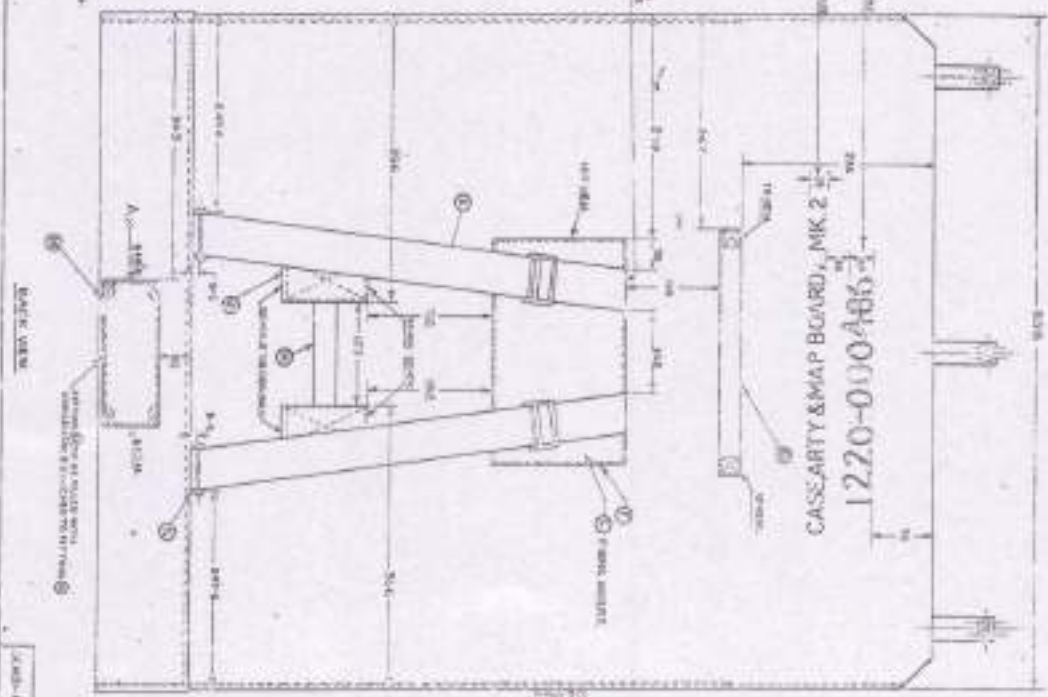
FORM 101 1-64
THIS IS NOT A
REPLACEMENT
FOR THE
SERIALS

FIG. 2. CASE ARTILLERY AND MAP BOARD, MK. 2.
 FRONT VIEW IN SECTION.
 DIMENSIONS ARE IN INCHES.



CASE ARTILLERY AND MAP BOARD, MK. 2.

POSITION OF FITTINGS.



CASE ARTY & MAP BOARD, MK. 2
 1220-000486

3

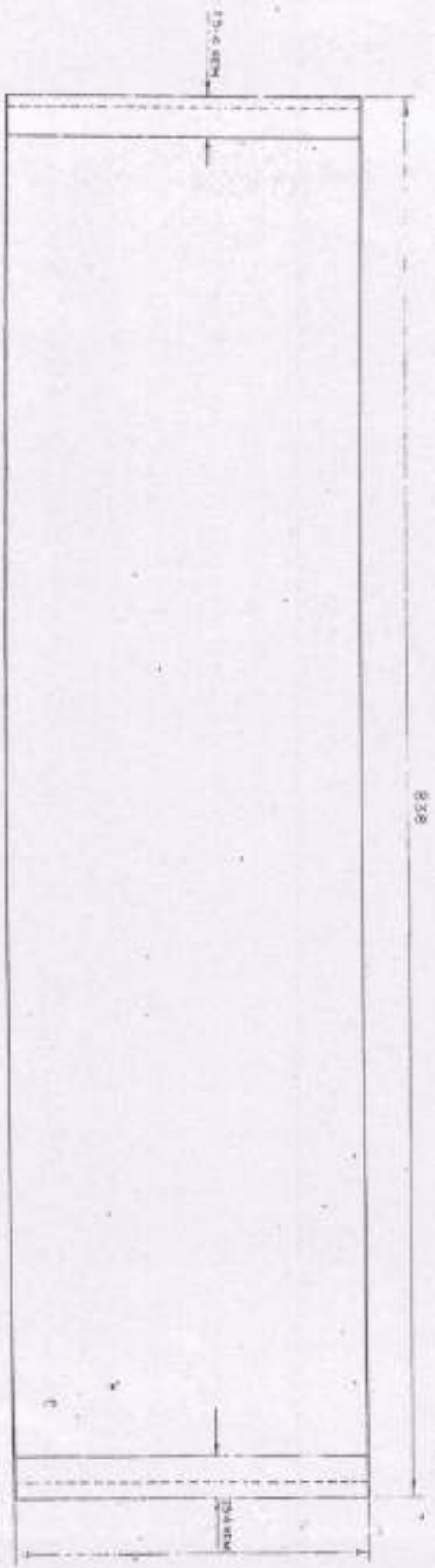
FOR USE BY
 THE
 ENGINEER
 REGIMENT
 1918

DRAWN BY 1220-000486 1220-000486	CHECKED BY 1220-000486 1220-000486	APPROVED BY 1220-000486 1220-000486	DATE 1220-000486 1220-000486
--	--	---	------------------------------------

NOTE:
 TO BE IN ITS REQUIRED POSITION WITH ATTENTION TO SEWING THE HEM
 TO BE IN ITS REQUIRED POSITION AND THEN THE SEWING AND ATTENDING
 TO BE STITCHED TOGETHER.

ATTENTION: VET. MAT. 1-
 COTTON CANVAS 680 GM OLIVE GREEN,
 WAITS ABOUT 31 CM TO GREEN. 181424.

FULL LENGTH OF CANVAS= 986.5



FOR EXPLANATION OF DIMENSIONS, ETC. SEE CH. TECH. INSTRUCTIONS IN THE
 THIRD ANGLE PROJECTION. DIMENSIONS ARE IN CM.

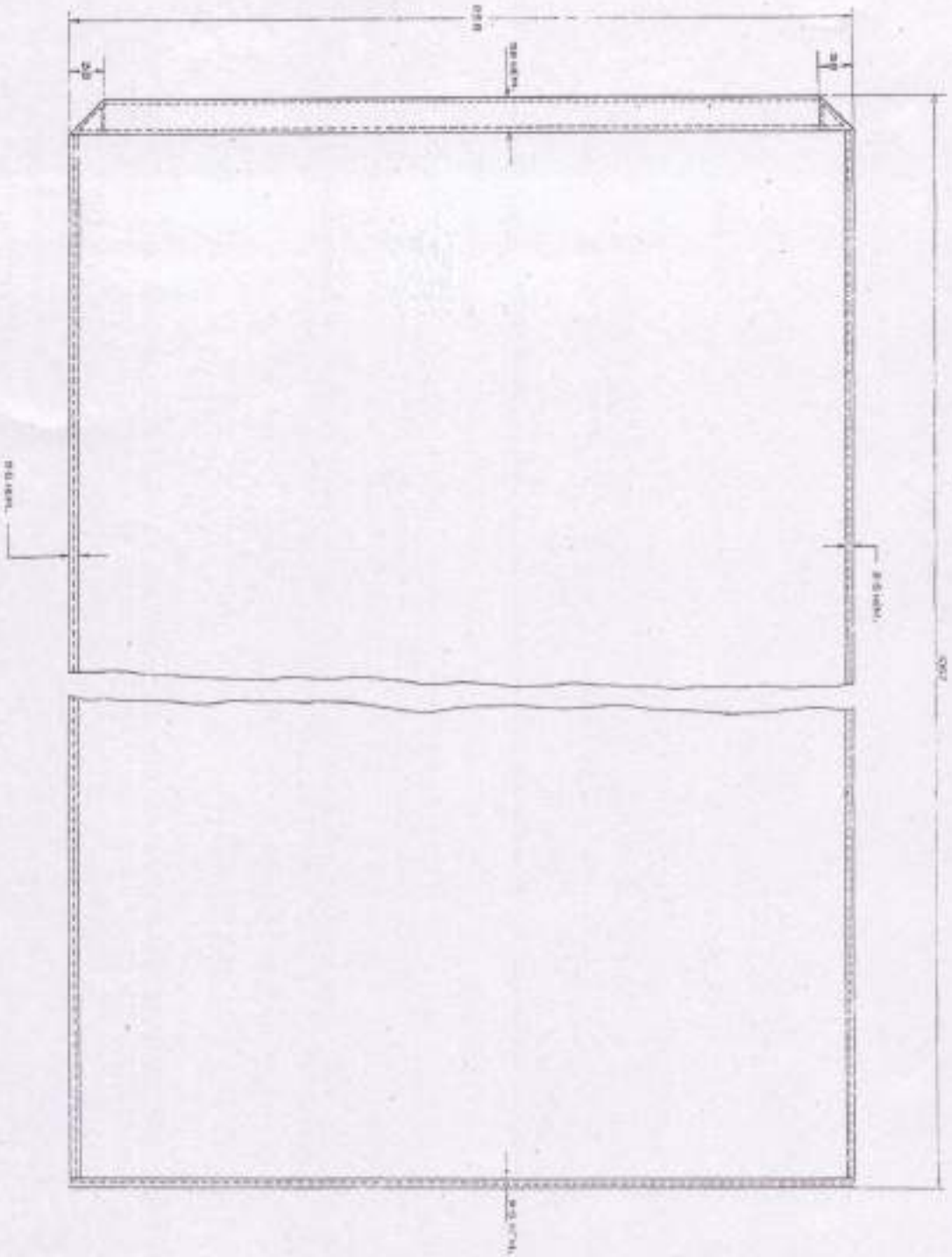
(A)

(Handwritten mark)

ARTICLE NO.	1475-1	1475-1	1475-1	1475-1	1475-1
QUANTITY	1	1	1	1	1
DESCRIPTION	Canvas	Canvas	Canvas	Canvas	Canvas
DATE	10/11/21	10/11/21	10/11/21	10/11/21	10/11/21

Case, Article 1475-1
 020-000486
 1475-1

FOR STAMP
 Date of Issue: 01/01/21
 Sign: [Signature]



ALTERNATIVE PARTS:
SEE YOUR CAROLINE AND JOHN CAROLINE AND JOHN
PHONE 714 639 7100

FOR SHADE ONLY
Date of Issue: *4/19/74*
Key

- NOTE: -
- 1. ALL DIMENSIONS TO BE APPROXIMATELY ACCURATELY SHOWN ON THIS DRAWING.
 - 2. THE 3/4\"

SEARCHED	INDEXED	SERIALIZED	FILED	APR 19 1984
FBI - MEMPHIS				100-2-100-2-100-2-100-2-100-2
SEARCHED BY: [Signature]				INDEXED BY: [Signature]
SERIALIZED BY: [Signature]				FILED BY: [Signature]
APR 19 1984				APR 19 1984
FBI - MEMPHIS				100-2-100-2-100-2-100-2-100-2
SEARCHED BY: [Signature]				INDEXED BY: [Signature]
SERIALIZED BY: [Signature]				FILED BY: [Signature]
APR 19 1984				APR 19 1984
FBI - MEMPHIS				100-2-100-2-100-2-100-2-100-2



TRACED AT CIL DEHRA DUN
 TRACED BY: - V.K. S. /
 CHECKED BY: - P. S. /
 DATE: - 14.2.81

D.C.(I)-1067-I, 1259-I, 1324-I, 2561-I, 3104-I, 4265-I, 5261-I

(5H)

AMENDMENTS.	
SIG.	DATE.
1	10.3.81.

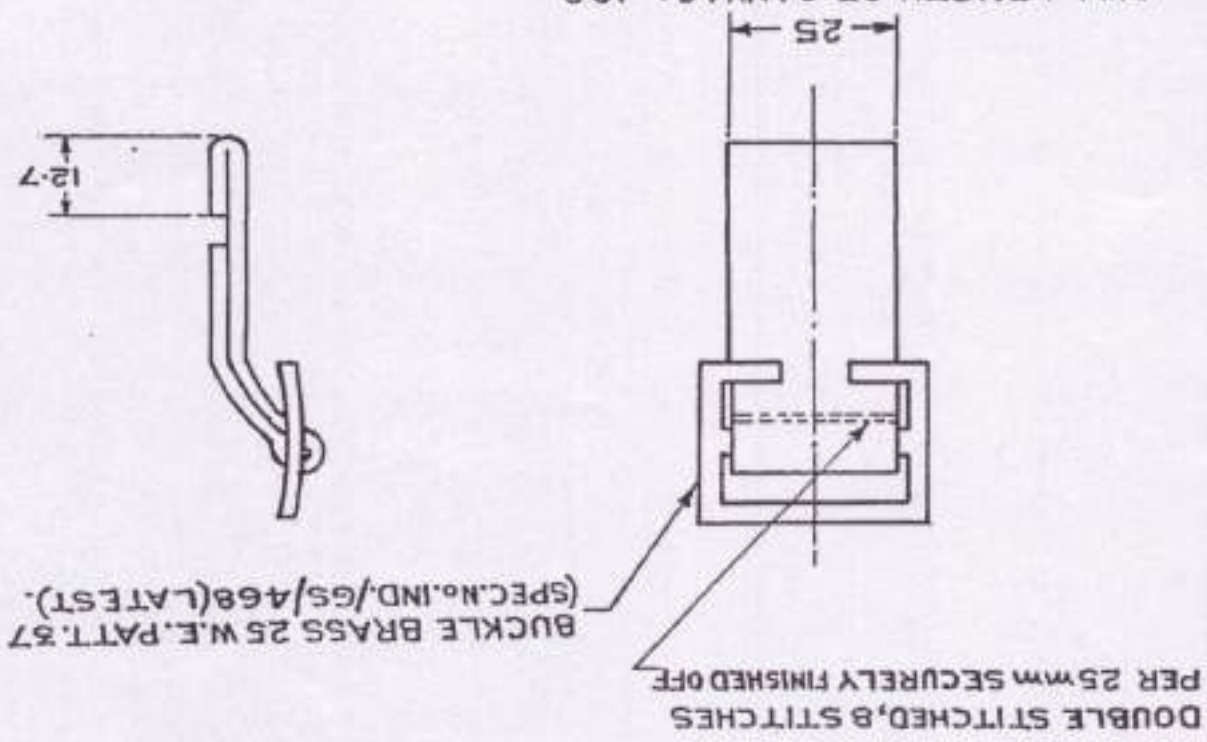
CASE, ARTILLERY & MAP BOARD, MK.2
 17 SHEETS
 O.S. 30986
 SHEET-6

C.A.(FC) 1968	
DETAIL No.-3	Sd/-
DRAWN TRACED CHECKED	Sd/-
FOR C.I.A.	Sd/-
SCALE:- NOT TO SCALE	
MATERIAL:- WEB, OLIVE GREEN THICK	
25 IS: 6488	
SEALD - 1 OCT. 43.	
SUPPLIER'S No.	

CAT/PART No. 1220-000486

S-OFF

FULL LENGTH OF CANVAS:- 108



FOR TRADE MARK
 Date of issue 24/11/79

FOR EXPLANATION OF DIMENSIONING, ETC., SEE CIL TECH. INSTRUCTIONS No. 01
 THIRD ANGLE PROJECTION.
 DIMENSIONS ARE IN mm.

(C)

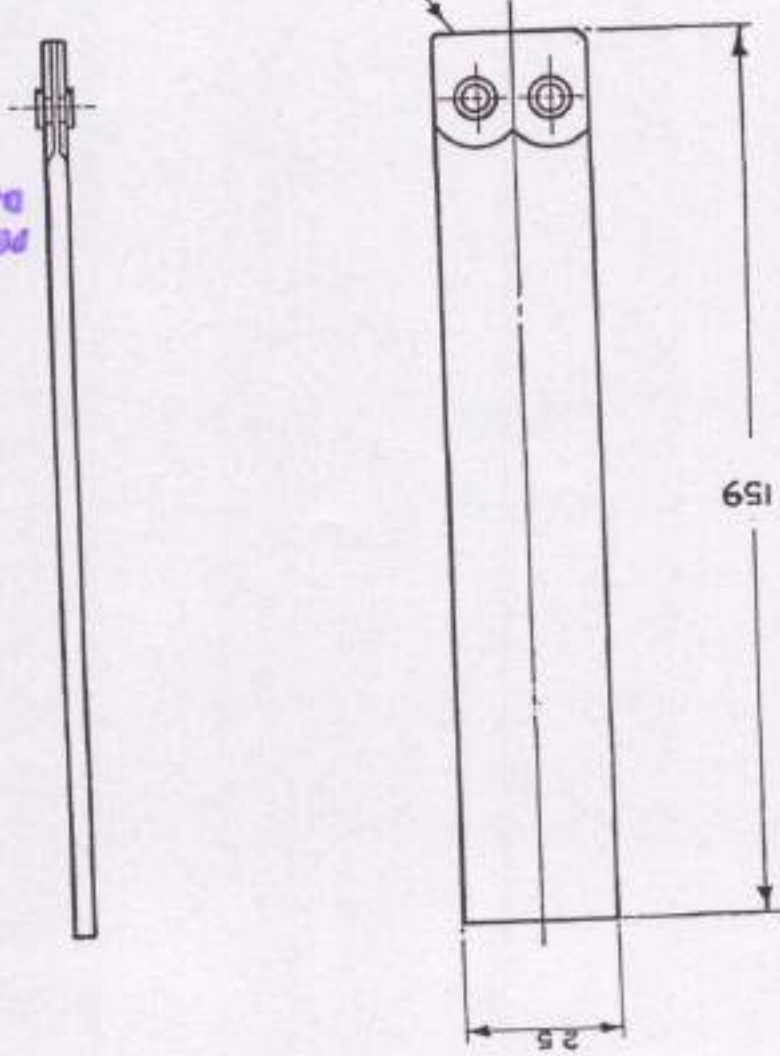
(6)

D.C.(I):- 4648-S, 1067-I, 1259-I, 1324-I, 2561-I, 3104-I, 4265-I, 5251-I

TRACED AT CHIDHRA DUN
 CHECKED BY :- *Chidhra*
 DATE :- 27.1.81

AMENDMENTS		SIG.	DATE
D.C.(I)-4648-S, 1067-I, 1259-I, 1324-I, 2561-I, 3104-I, 4265-I, 5251-I IN SUPPRESSION OF EXISTING ONE.		✓	10-3-81
D.C.(I)-5251-I NOM & CAT/PT. NO AMENDED.			23588
SCALE:- NOT TO SCALE			
MATERIAL:- MEB, OLIVE GREEN THICK			
DRAWN G.S. LES		TRACED	3/D
S/D		CHECKED	FOR C.I.A.
DETAIL No. 4			1.10.1943
C.I.A (F.C) 1968			
CAT/PART No. 1220-000486			
SHEETS 17			
SUPPLIER'S No. O.S. 30986			
SEALD 1 OCT. 43			
CASE, ARTILLERY & MAP BOARD, MK. 2			

TIPS BRASS 25 W.E. PART. 37
 TO SPEC. IND/GS/468 (LATEST)
 WITH EYELETS W.E.



FOR BRASS 25 W.E.
 Date of issue 27/1/81
Chidhra

FOR EXPLANATION OF DIMENSIONING, ETC., SEE C.I. TECH. INSTRUCTIONS No. 01
 THIRD ANGLE PROJECTION
 DIMENSIONS ARE IN mm

(D)

(7)

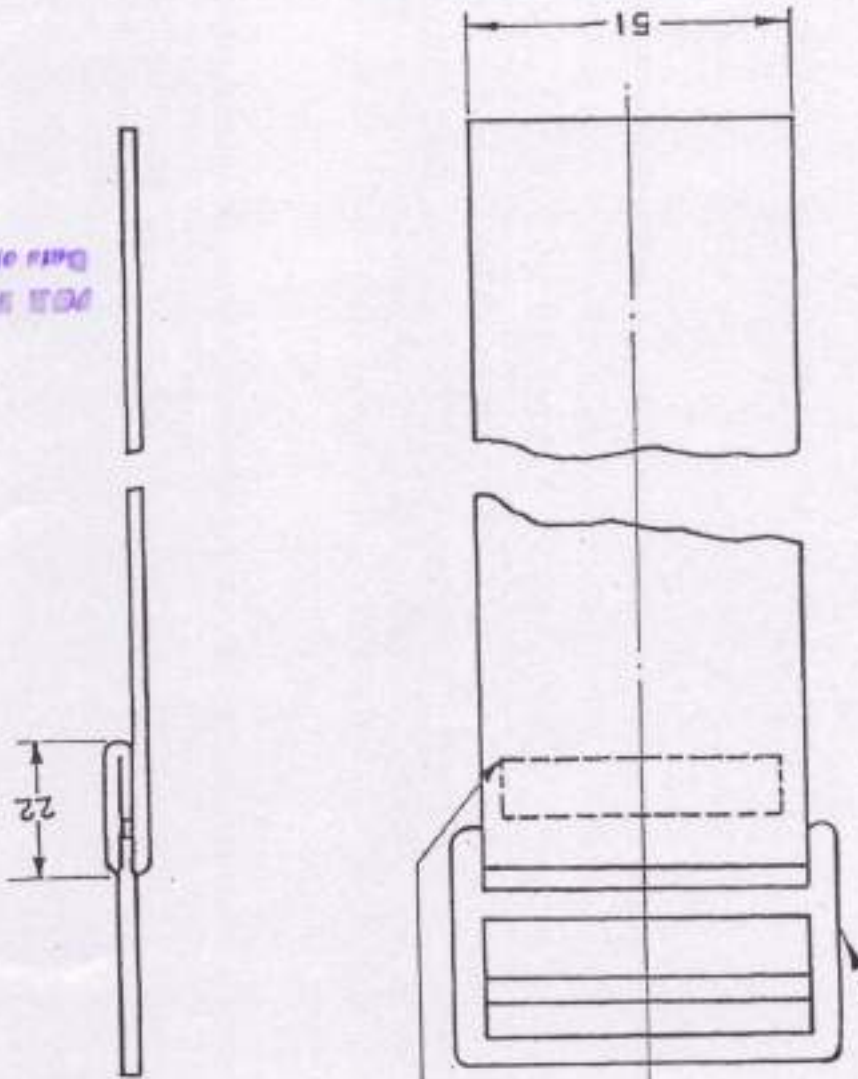
RETRACED AT CII, DEHRADUN
 TRACED BY:- *Asst. Insp.*
 CHECKED BY:- *J. S. J.*
 DATE:-

D.C.(I):- 4648-S, 1067-I, 1259-I, 1324-I, 1359-I, 2561-I, 3104-I, 4265-I, 4368-I, 5251-I

FOR EXPLANATION OF DIMENSIONING, ETC., SEE CII, TECH. INSTRUCTIONS No. DI
 THIRD ANGLE PROJECTION
 DIMENSIONS ARE IN mm

(a) **(E)**
 BUCKLE BRASS SI TO SPEC. IND/GS/
 3452 WITH LOOP (TO H & S FY. DRG.
 No. 1255).

①-STITCHES PER 25 mm
 SECURELY FINISHED OFF.



CAT/PT. No. 1220-000486 (b)		CIA (FC) 1968 s.d/- DETAIL No. 5 1.10.1943		DRAWN TRACED CHECKED o.d. f.e. s.d/- for CIA		SCALE:- NOT TO SCALE 23.5.88		MATERIAL:- WEB, OLIVE GREEN THICK 91.151.6498 B.1.82		SEALING:- 1 OCT. 43		SUPPLIER'S No.		O.S. 30986 17 SHEETS SHEET 8	
AMENDMENTS		SIG.		DATE		D.C.(I) 4265-I. DCG METRICISED & SEALED IN SUBSTITUTION OF EXISTING ONE. 1		E. ADDED.		D.C.(I) 4368-I.		NOM. & CAT/PT. No. AMENDED.		61 D.C.(I) 5251-I.	

DO NOT WRITE OVER THIS
 Date of Issue: 24/10/43
Key

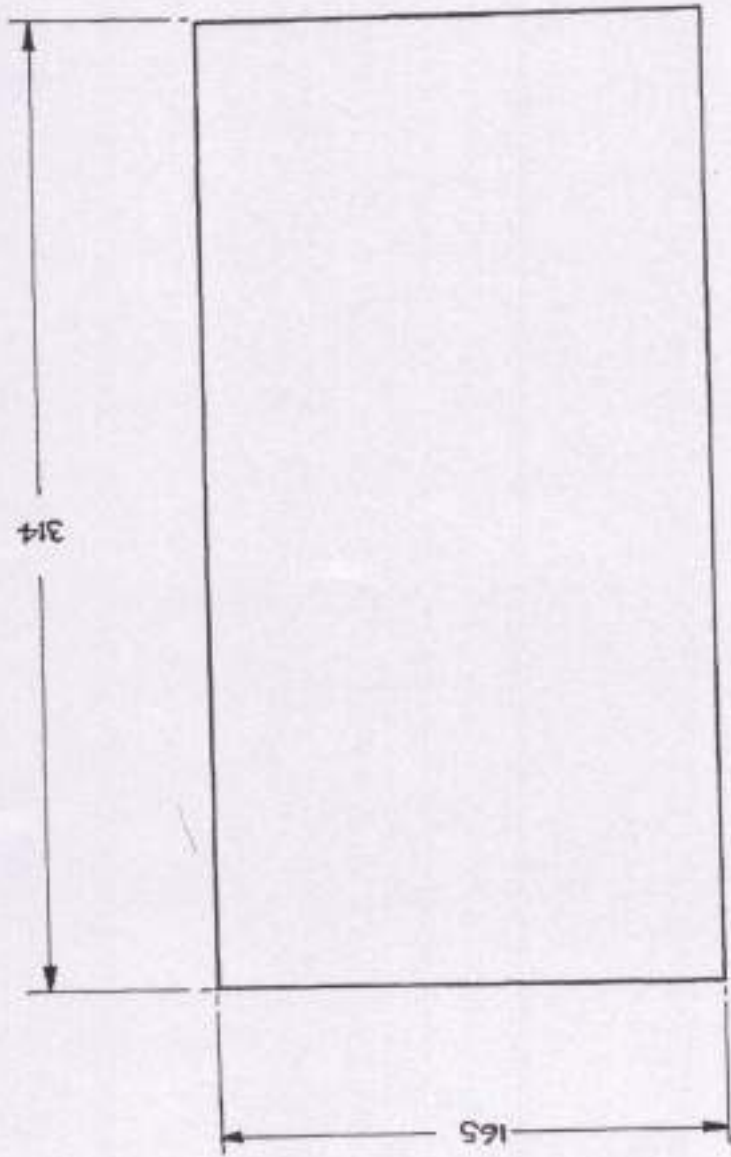
8

D.C. (I)-4648-S, 1067-I, 1259-I, 1433-I, 2254-I, 2469-I, 4265-I, 5251-I

TRACED AT CIL, DEHRA DUN.
 TRACED BY :- *C. S. G. / S. G.*
 CHECKED BY :- *Full*
 DATE :- 30-1-1981.

AMENDMENTS		SIG.	DATE
D.C. (I)-4265-I-DRG. METRICISED & SEALED IN SUBMISSION OF EXISTING ONE.		<i>1/2</i>	10-3-81
(2) D.C. (I)-5251-I-DRG. METRICISED & SEALED IN SUBMISSION OF EXISTING ONE.			23-5-88
NOM. & CAT/PT. No. AMENDED.			
MATERIAL :- SEE ABOVE.			
SCALE :- NOT TO SCALE.			
DRAWN TRACED CHECKED FOR C.I.A.			
C.I.A. (F.C.) 1968.			
DETAIL No. 6.			
S.D./10-43.			

MATL :- DUCK COTTON 22 OZS. OLIVE GREEN
 WATERPROOF 913 SPECN No. IND/TC/0201.
 CAT/DART No. 1220-000486



1- OFF.

FOR EXPLANATION OF DIMENSIONING, ETC., SEE CIL TECH. INSTRUCTIONS No. 01
 THIRD ANGLE PROJECTION
 DIMENSIONS ARE IN mm.

(5)

(F)

FOR TRADE MARK
 Date of issue: 24/01/81
 Key:

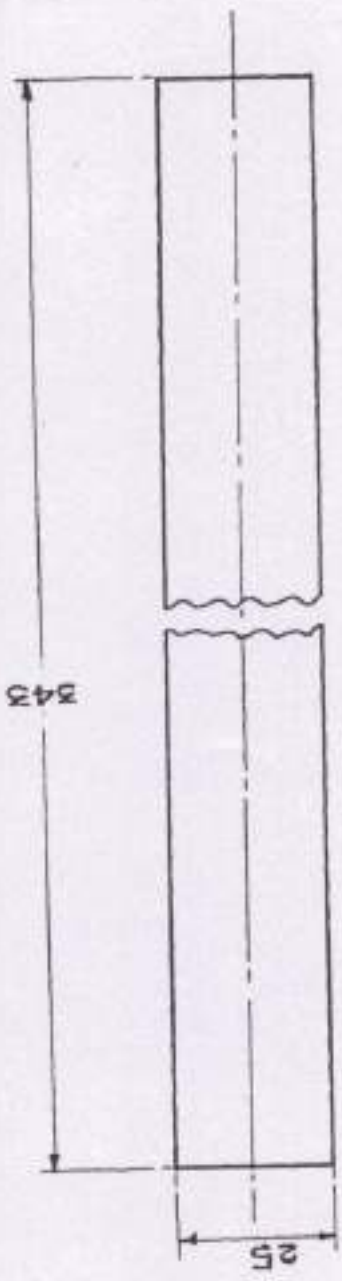
(2)

SUPPLIER'S No. O.S. 30986.
 17 SHEETS
 SHEET 9.

RE-TRACED AT CII, DEHRADUN
 TRACED *Swati* CHECKED
 CHECKED *Swati* CHECKED
 DATE: --

D.C.(I) No. 4649-S, 1067-I, 1259-I, 1324-I, 2561-I, 4265-I, 5251-I.

(B) CASE, ARTILLERY & MAP BOARD, MK.2 AMENDMENTS D.C.(I) 4265-I-000. METRICISED & SEALED IN SUPERSESSION OF EXISTING ONE. L.P.D.C.(I)-5251-I-AMENDED. 23.5.88 NON. & DAT/PT. NO.		DATE 10.5.81
SUPPLIER'S No. OS 30986 17 SHEETS SHEET 10		SEALED:- 1 OCT. 43
MATL:- WEB, OLIVE, GREEN THICK 23 15: 24 88		SCALE:- NOT TO SCALE
DRAWN TRACED CHECKED for C.I.A. M.M. S/A	DETAIL No.7 C.I.A. (F.C) 1968	
CAT/PART No. 1220-000.486 1-OFF		



FOR EXPLANATION OF DIMENSIONS ETC, SEE CII, TECH. INSTRUCTIONS N.01
 THIRD ANGLE PROJECTION
 DIMENSIONS ARE IN mm

57

6

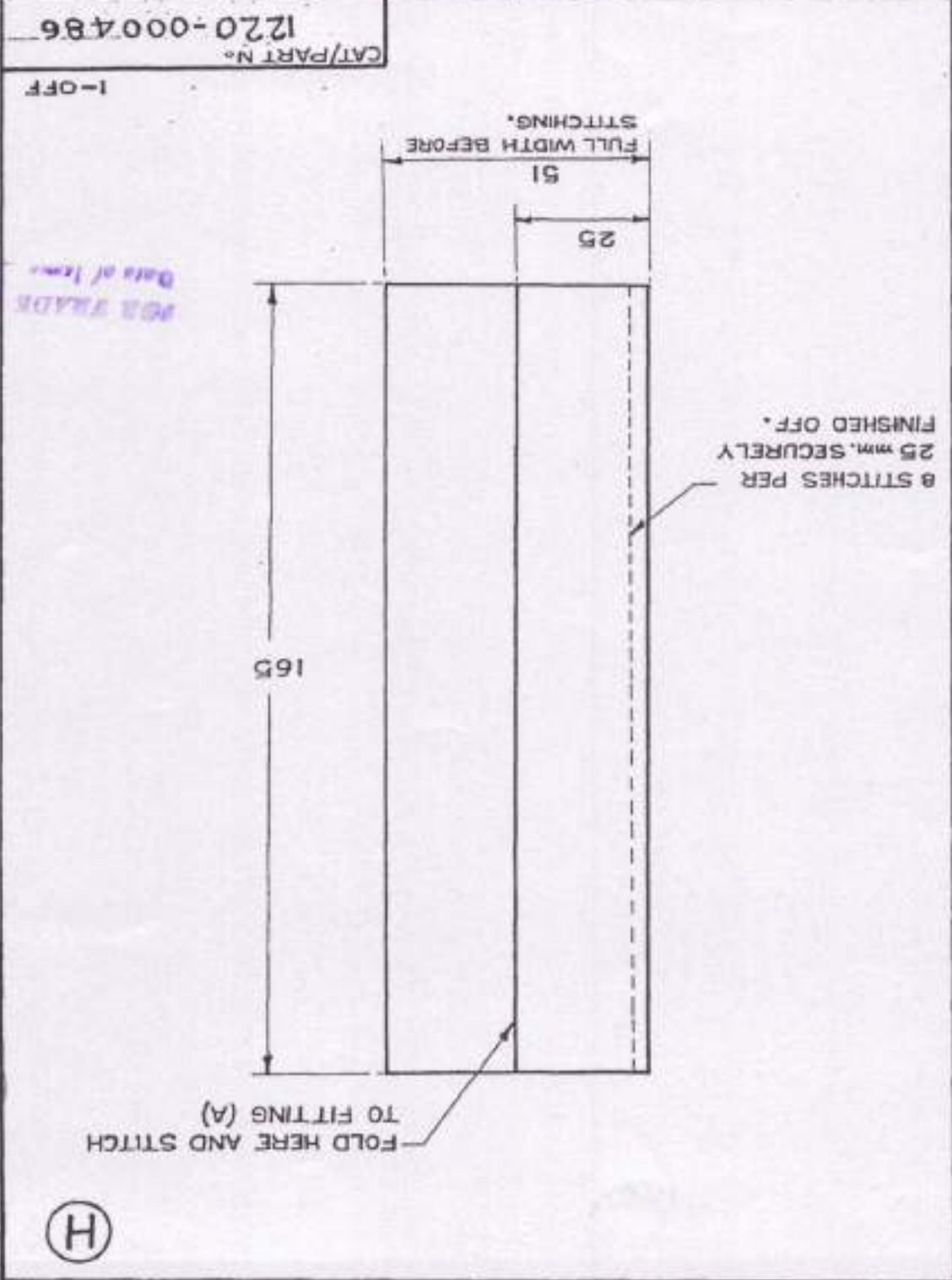
FOR TRADE MARK
 Date of issue: 24/01/77
 Agw

15

RE-TRACED AT CII, DEHRADUN
 TRACED *Handwritten*
 CHECKED *Handwritten*
 DATE: -

D.C.(I) No. 4648-5,1067-I,1259-I,1324-I,2561-I,4265-I,5251-I.

AMENDMENTS		DATE
D.C.(I)-4265-I-DRG. METRICISED & SEALED IN SUBSTITUTION OF EXISTING ONE.		23.5.88
D.C.(I)-5251-I-NOM. & CAT/PT. No. AMENDED		23.5.88
MATERIAL: WEB, OLIVE GREEN THICK		SCALE: NOT TO SCALE
DRAWN TRACED CHECKED		DETAIL No. 8
C.I.A. (F.C.) 1968		CAT/PART No. 1220-000486
SEALING: 1 OCT. 43		1-OFF
SUPPLIER'S No.		



FOR EXPLANATION OF DIMENSIONING ETC, SEE I.T. INSTRUCTIONS No. 01
 THIRD ANGLE PROJECTION
 DIMENSIONS ARE IN mm

(H)

(5)

OS 30986
 17 SHEETS
 SHEET II

Handwritten: 24/11/74
 Date of Issue

Handwritten: 11

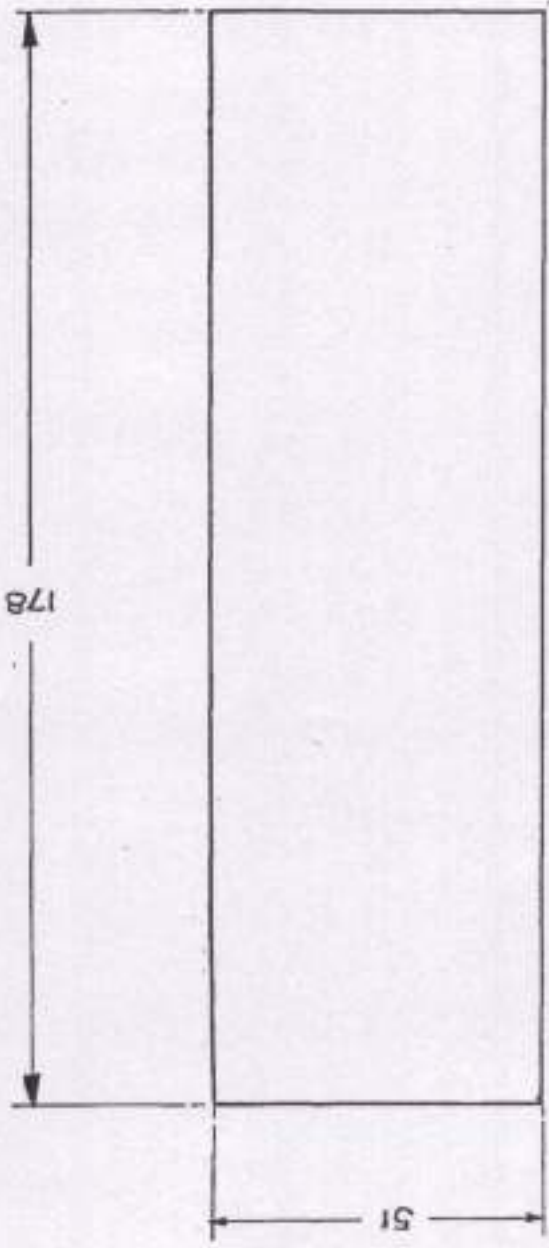
TRACED AT CIL, DEHRA DUN.
 TRACED BY: - C. S. Sharma
 CHECKED BY: - *Malik*
 DATE: - 28-1-91.

D.C.(I)-4648-S, 1067-I, 1259-I, 1324-I, 2561-I, 4265-I, 5251-I.



C.A.D. C.(I)-5251-I		NON-CAT/P.T. NO. AMENDED	
D.C.(I)-4265-I - DRG. METRICISED & SEALED		IN SUPERSESSION OF EXISTING ONE.	
SIG.	DATE	AMENDMENTS	
	10.3.91		
SEALING DATE: 1. OCT. 43.		SUPPLIER'S NO.	
MATERIAL: WEG, OLIVE GREEN THICK		SCALE: NOT TO SCALE.	
DRAWN		TRACED	CHECKED
DETAIL No. 9.		FOR C.I.A.	
C.I.A.(F.C) 1968		sd/-	

CAT/PART No. 1220-000486



FOR EXPLANATION OF DIMENSIONING, ETC., SEE CIL TECH INSTRUCTIONS NO. 3
 THIRD ANGLE PROJECTION.
 DIMENSIONS ARE IN MILLIMETERS.

FOR SHADE ORN
 Date of issue - 14/11/91
sd/-

O.S. 30986
 17 SHEETS
 SHEET 12

TRACED AT CII, DEHRADUN.
 TRACED BY: - V.K. S.
 CHECKED BY: - *Pradeep*
 DATE: - 28.1.81

D.C.(I):- 4648-S, 1067-I, 1259-I, 1324-I, 2561-I, 4265-I, 5251-I.

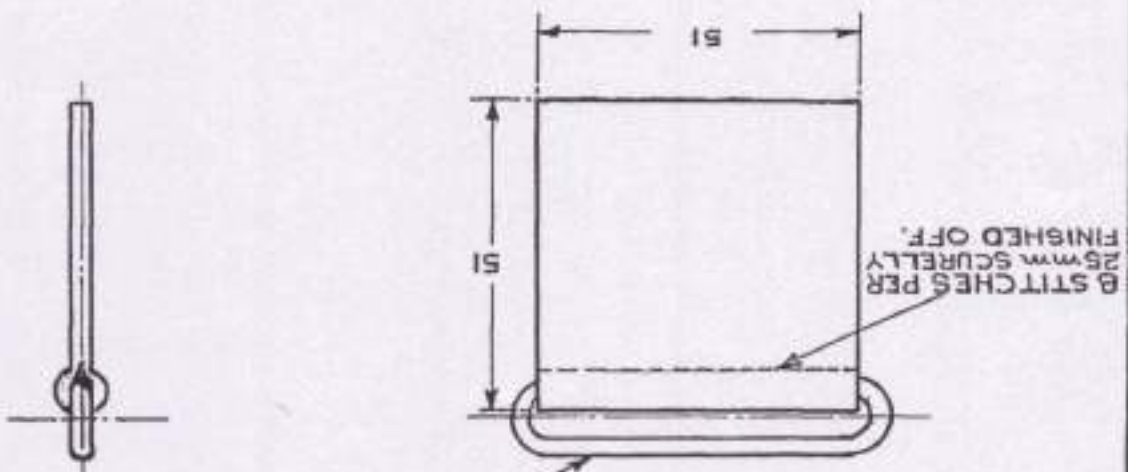
C.A.(F.C.) 1968		C.I.A. (F.C.) 1968	
DETAIL No 10		DETAIL No 10	
DRAWN	TRACED	CHECKED	FOR C.I.A.
5/1-	5/1-	5/1-	5/1-
SCALE- NOT TO SCALE			
MATERIAL:- SI, IS: 6488			
WEB OLIVE GREEN THICK			
SEALING:- 1 OCT. 43		SEALING:- 1 OCT. 43	
SUPPLIER'S No.		SUPPLIER'S No.	
O.S. 30986		O.S. 30986	
17 SHEETS		17 SHEETS	
SHEET 13		SHEET 13	

CAT/PART. No. 1220-000486

(a)

FULL LENGTH OF CANVAS:- 114

2 OFF.



LOOP BRASS 50 (SPEC. No. IND/TC/3452) BLACK BRONZED

FOR EXPLANATION OF DIMENSIONING, ETC., SEE CII, TECH. INSTRUCTIONS No. 10
 THIRD ANGLE PROJECTION.
 DIMENSIONS ARE IN mm

(K)

13

FOR BLADE ORN
 Date of Item: 24/1/81
Pradeep

D.C.(I) No:- 4648-S, 1067-I, 3104-I, 4265-I, 5251-I.

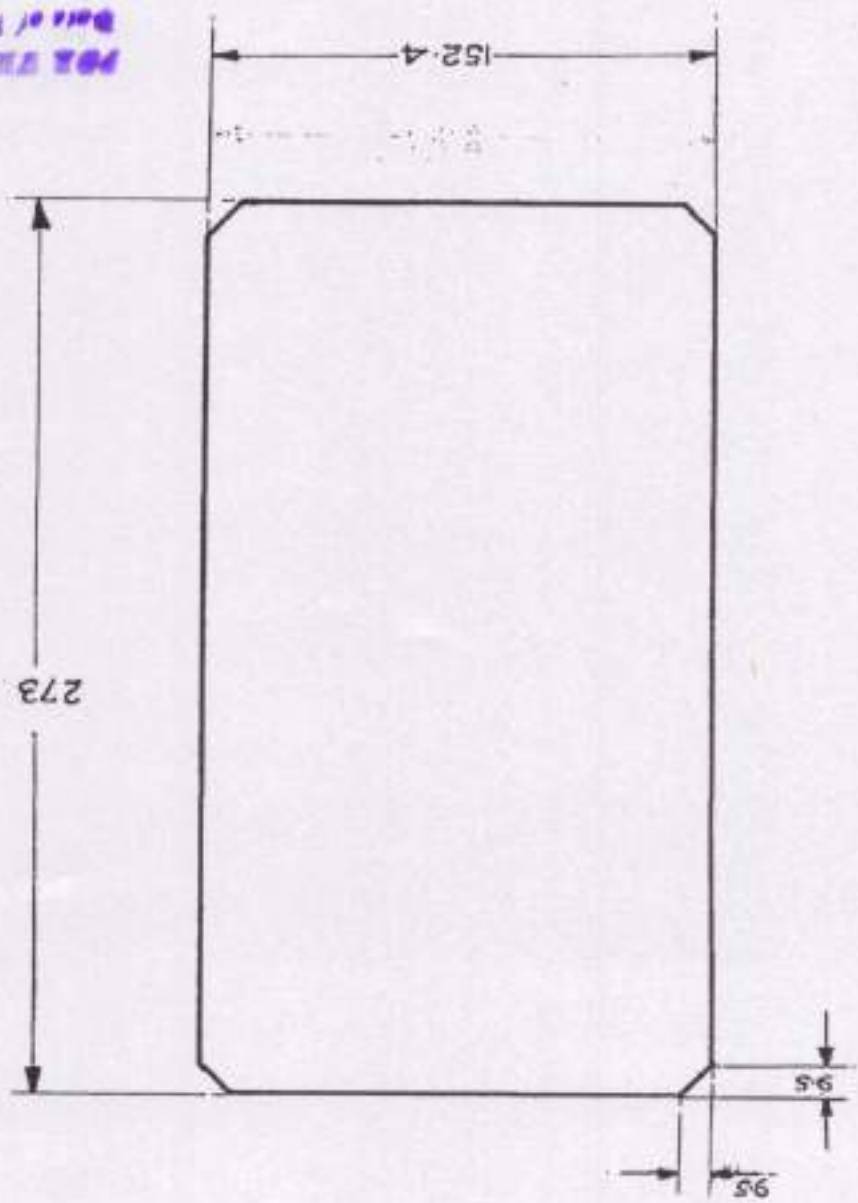
TRACED AT CII, DEHRA DUN.
 TRACED BY:- *C.S. Garg*
 CHECKED BY:- *Smith*
 DATE :- 23-1-81.

AMENDMENT		SIG. DATE	SUPPLIERS No.
D.C.(I):- 4265-I-ORG.METRICISED & SEALED IN SUPERSESSION OF EXISTING ONE.		10-3-81.	O.S. 30986
(A) D.C.(U):- 5251-I-1- MOM & CAT/PT. No. AMENDED		25.08	17 SHEETS
MATERIAL:- SEE ABOVE.			SHEET 14
SCALE:- NOT TO SCALE.			
DRAWN TRACED CHECKED			
DETAIL. No. II			
CIA (FC) 1968			
CAT/PART No.			

CAT/PART No. 1220-000486

1-OFF

MATL:-
 3.2 mm THICK, IND/GS/1473
 VULCANIZED FIBER, RED SHEET



FOR BLADE GRIND
 Date of term. 24/01/74
Raj

14
 7

FOR EXPLANATION OF DIMENSIONING, ETC., SEE CII TECH INSTRUCTIONS No. 1
 THIRD ANGLE PROTECTION.
 DIMENSION ARE IN mm.

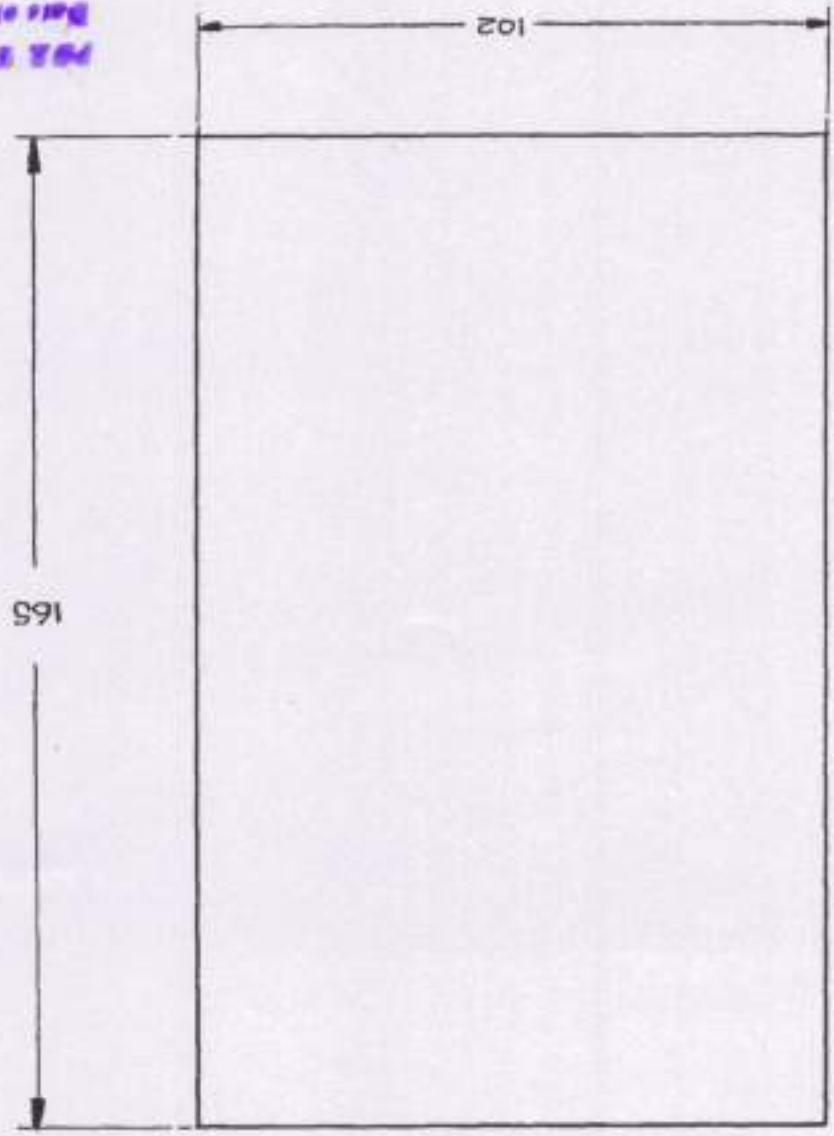
D.C.(I)-4648-S,1067-I,1259-I,1324-I,2561-I,4265-I,5251-I.

TRACED AT CIL DEHRA DUN
TRACED BY:- C. S. Sharma
CHECKED BY:- *K. S. Singh*
DATE :- 27.1.81.

C.A. (F.C.) 1968		C.I.A. (F.C.) 1968	
DETAIL NO. 12.		SCALE:- NOT TO SCALE.	
DRAWN	TRACED	CHECKED	FOR C.I.A.
SCALE:- NOT TO SCALE.		MATERIAL:- WEB, OLIVE GREEN THICK	
D.C.(I) 4265-I-ORG. METRICISED & SEALED		IN SUPPRESSION OF EXISTING ONE.	
D.C.(I) 5251-I		NO. 4 GATE/PT. NO. AMENDED.	
23.5.88		10.3.81.	
SIG.		DATE	
AMENDMENT			
SUPPLIER'S No.			
O.S. 30986			
17 SHTS.			
CASE, ARTILLERY & MAP BOARD, MK.2			

CAT/PART No. 1220-000486

1-OPF



FOR SHADE ORG.
Date of issue: 24/10/81
K. S. Singh



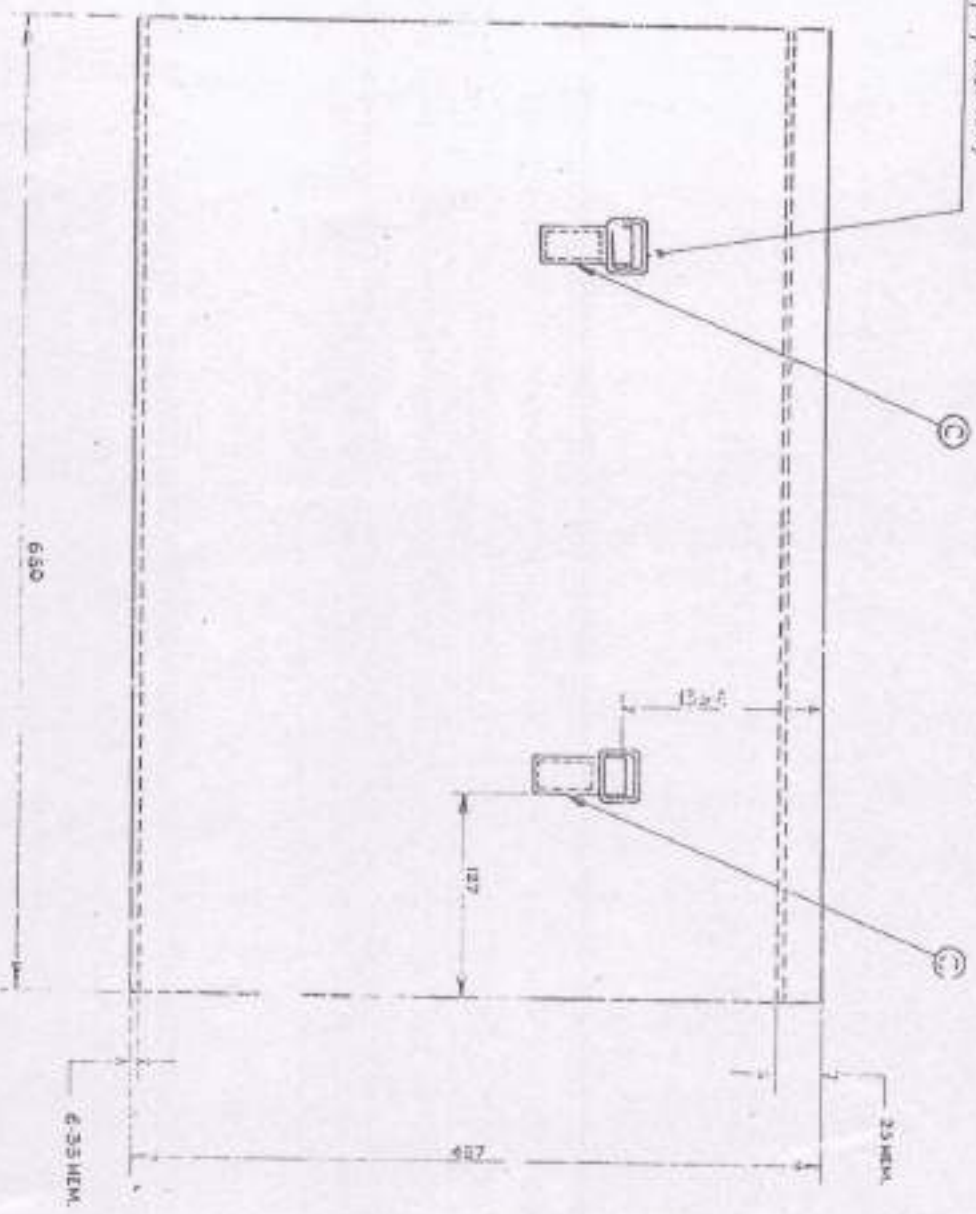
FOR EXPLANATION OF DIMENSIONING, ETC., SEE CIL TECH. INSTRUCTION NO. 01.
THIRD ANGLE PROTECTION
DIMENSIONS ARE IN mm.

5

TRACED AT CH DENRAD 24
 TRACED BY J. J. [Signature]
 CHECKED BY J. J. [Signature]
 DATE 11/27/67

DCO) No - 4648-S, 1067-I, 1259-I, 1-35-I, 2254-I, 231-I, 2409-I, 3101-I, 4265-I, 5151-I, 6251-I

1-LOOKS AHEAD 15WV PART
 27(2) (3) (4) (5) (6) (7) (8) (9) (10) (11) (12) (13) (14) (15) (16) (17) (18) (19) (20) (21) (22) (23) (24) (25) (26) (27) (28) (29) (30) (31) (32) (33) (34) (35) (36) (37) (38) (39) (40) (41) (42) (43) (44) (45) (46) (47) (48) (49) (50) (51) (52) (53) (54) (55) (56) (57) (58) (59) (60) (61) (62) (63) (64) (65) (66) (67) (68) (69) (70) (71) (72) (73) (74) (75) (76) (77) (78) (79) (80) (81) (82) (83) (84) (85) (86) (87) (88) (89) (90) (91) (92) (93) (94) (95) (96) (97) (98) (99) (100)



ALTERNATIVE MATL.:-
 COTTON CANVAS 680 gm OLIVE GREEN, WAVE
 PROOF ST. CMB TO SPECN. 15: 1A2A.

NOTE:-
 ALL STITCHING TO BE 6/30R STITCHES PER 25 MM
 SECURELY FINISHED OFF. CANVAS MUST BE WATER PROOF

FOR EVALUATION OF DIMENSIONING SET TO TOP AND RIGHT DIMENSIONS
 THIRD ANGLE PROJECTION DIMENSIONS ARE IN MM

(17)

(3)

FOR TRADE USE
 Date of Issue: 04/05/74
 [Signature]

NO.	DESCRIPTION	ISSUED	DATE	BY	REVISION
1	FOR TRADE USE	04/05/74			
2	FOR TRADE USE	04/05/74			
3	FOR TRADE USE	04/05/74			
4	FOR TRADE USE	04/05/74			
5	FOR TRADE USE	04/05/74			
6	FOR TRADE USE	04/05/74			
7	FOR TRADE USE	04/05/74			
8	FOR TRADE USE	04/05/74			
9	FOR TRADE USE	04/05/74			
10	FOR TRADE USE	04/05/74			

1220-3000 Axis

GA (50) 1500
 DETAIL No 1A
 00 20985

CASE/ATTILITY'S MAP BOARD/MAT.