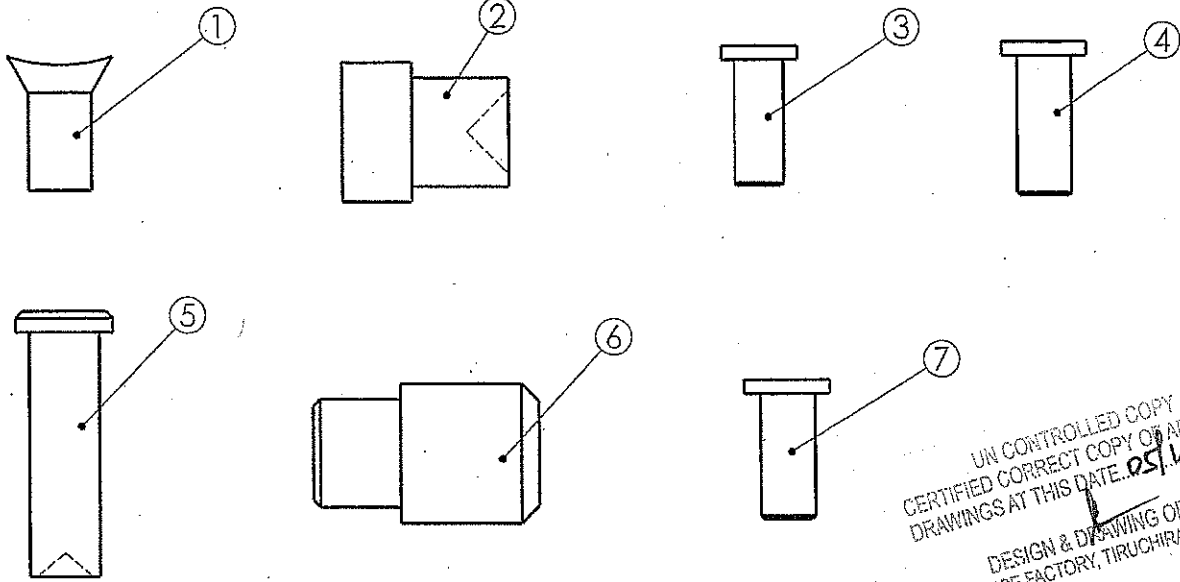




Un tolerated dimensions
IS:2102 Medium



UN CONTROLLED COPY
CERTIFIED CORRECT COPY ON APPROVAL
DRAWINGS AT THIS DATE.. 05/10/23
DESIGN & DRAWING OFFICE,
ORDNANCE FACTORY, TIRUCHIRAPPALLI-620 016.

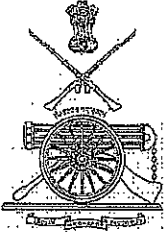
NOTE: These Drawings are given only for illustration purpose.
Refer Latest Store Drawings for Details.

SL.NO.	DRG. NO.	NOMENCLATURE	Quantity (QPG) in No's.
1	K-1102	Rivet Bullet Guide	1.05
2	K-1103	Selector Stop	1.05
3	K-1105	Rivet Trigger Guard Front	4.05
4	K-1107	Rivet Trigger Guard Rear	1.05
5	K-1113	Pin Catch Magazine	1.05
6	K-4014	Rivet Supporting Side	1.05
7	K-4109	Rivet Pistol Grip Base	1.05

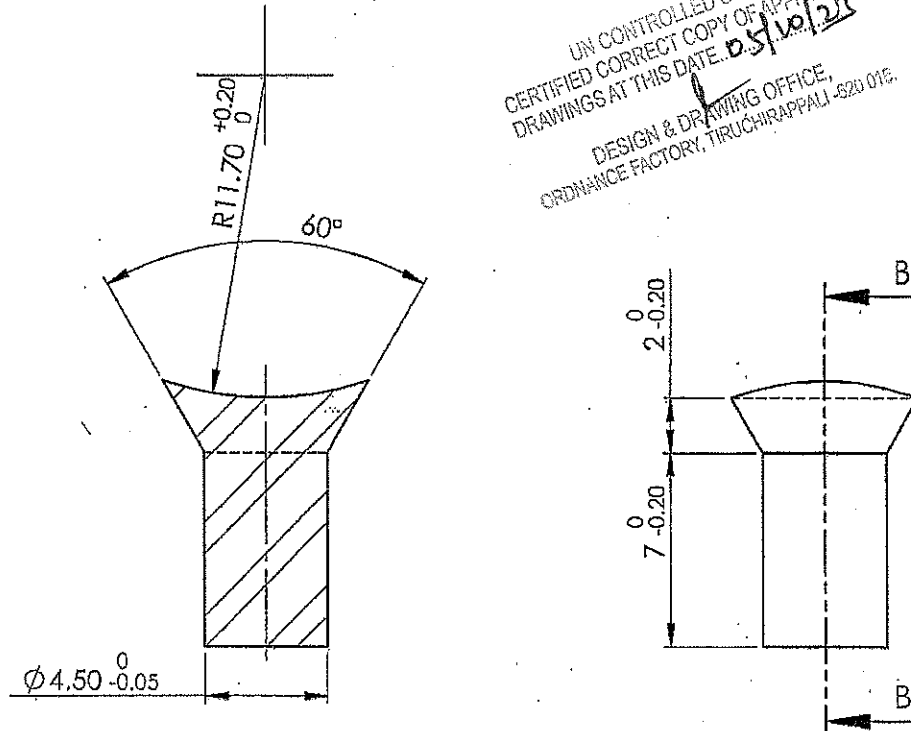
Amendments	Sig. & Date	APPROVED ON : 20/05/2023	 DWG Details 3rd Angle SIGN DATE.		SUB: SET OF RIVETS FOR TAR	
			DRAWN <i>[Signature]</i> CHECKED <i>[Signature]</i> HOS/D&DO <i>[Signature]</i> Div. Officer Prodn Div. Officer OC Div. Officer DDO <i>[Signature]</i>	FOR: RECEIVER ASSY. PROJ.: TRICHY ASSAULT RIFLE Design Ref RIVET DRGS. OF TAR DWG. No.: TEND - 2730	Scale NTS All Dimensions are in mm QPG -	
			 ORDNANCE FACTORY TIRUCHIRAPPALLI-16.		Wt. (Appx) gm SHEET: 1 OF 1	

DRG NO.

DIMENSIONS ARE IN mm.
 UNTOLERATED DIMNS. AS PER IS : 2102 (MED)
 MARK DRAWING No.



UN CONTROLLED COPY
 CERTIFIED CORRECT COPY OF APPROVED
 DRAWINGS AT THIS DATE. 05/10/23
 DESIGN & DRAWING OFFICE,
 ORDNANCE FACTORY, TIRUCHIRAPPALLI-620 016.



SECTION B-B

Material :

Steel
 BS:970 Pt.1 1983 Sec.3 Gr.708 M40 (or) EN19A
 BS:970 Pt.1 1983 Sec.3 Gr.709 M40 (or) EN19
 BS:970 Pt.1 1983 Sec.3 Gr.817 M40 (or) EN24

Hardness: 175 - 250 HV

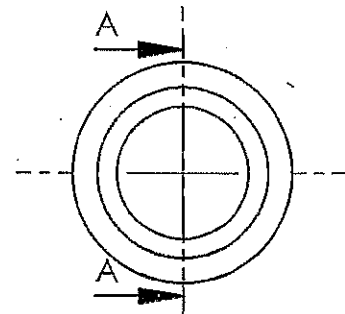
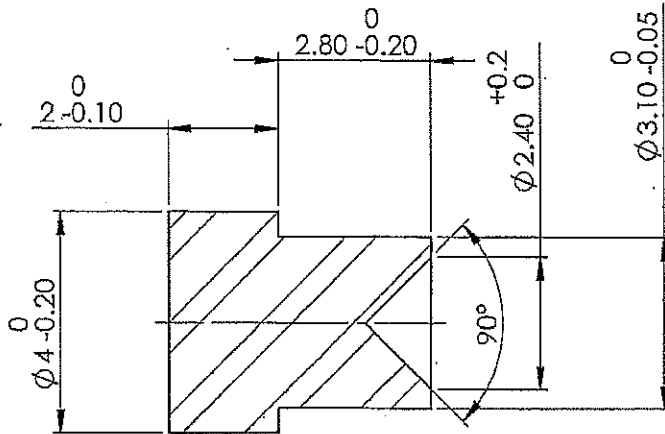
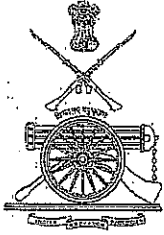
Protective Finish :

Accelerated Phosphating to Specn. JSS : 0465-01-1994
 Class II Oil Finish

AMENDMENTS	SIG. & DATE		SIGNATURE & DATE.	SUB: Rivet Bullet Guide	SCALE
		TRACED			FOR: Receiver Assy
		DRAWN		OF: TRICHY ASSAULT RIFLE	QPG
		CHECKED		DES.REF.NO. K-1102	1
		OIC/D&DO	<i>P. T. ...</i>	DRG. No.: TAR-K-1102	Weight (g)
		OFFICER/PRODN.		ORDNANCE FACTORY TIRUCHIRAPPALLI-16.	1.31
DIV.OFFICER/D&DO	<i>Se. K. ...</i>	SHEETS: 1			
APPROVED ON. 01/11/2017.				SHEET No.: 1	

DRG NO.

DIMENSIONS ARE IN mm.
 UNTOLERATED DIMNS. AS PER IS.: 2102 (MED)
 MARK DRAWING No.



SECTION A-A

UN CONTROLLED COPY
 CERTIFIED CORRECT COPY OF APPROVED
 DRAWINGS AT THIS DATE... 05/10/23
 DESIGN & DRAWINGS OFFICE,
 ORDNANCE FACTORY, TIRUCHIRAPPALLI-620 016.

Material :
 BS:970 Pt.1 1983 Sec.3 Gr.070 M20 (or) EN3A,3C
 Alt. Matl.
 BS:970 Pt.1 1983 Sec.3 Gr.080 M40 (or) EN8, 8A,8B, 8C,8D

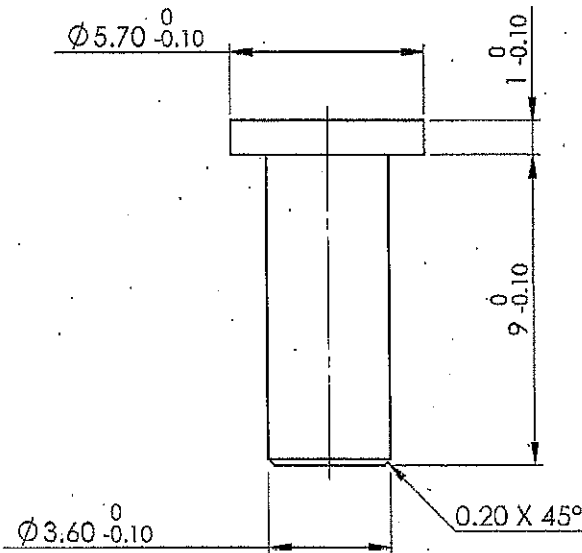
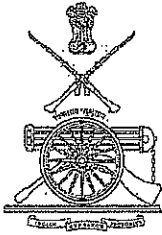
Hardness: 170 - 250 HV

Protective Finish :
 Phospating to Specn.
 JSS: 0465-01-1994 Class II Oil Finish

			SIGNATURE & DATE.	SUB: Selector Stop	SCALE NTS
		TRACED		FOR: Receiver Assy	Weight (g) 0.35
		DRAWN		OF: TRICHY ASSAULT RIFLE	
		CHECKED		DES. REF. NO. K-1103	QPG 1
		OIC/D&DO	<i>P. Tarta.</i>	DRG. No.: K-1103	
OFFICER/PRODN.		ORDNANCE FACTORY TIRUCHIRAPPALLI-16.			
DIV. OFFICER/D&DO	<i>Se-Ka</i>		SHEETS: 1		
AMENDMENTS	SIG. & DATE	APPROVED ON: 30/04/2018		SHEET No.: 1	

ON'DRD

DIMENSIONS ARE IN mm.
UNTOLERATED DIMNS. AS PER IS : 2102 (MED)
MARK DRAWING No.



UN CONTROLLED COPY
CERTIFIED CORRECT COPY OF APPROVED
DRAWINGS AT THIS DATE... 25/10/23
DESIGN & DRAWING OFFICE,
ORDNANCE FACTORY, TIRUCHIRAPPALLI-620 016.

Material :
BS:970 Pt.1 1983 Sec.3 Gr.070 M20 (EN3A,3C)
BS:970 Pt.1 1983 080 M40 (EN-8)
Alt. Matl.
IS:7887-1992 Grade 8 or 9

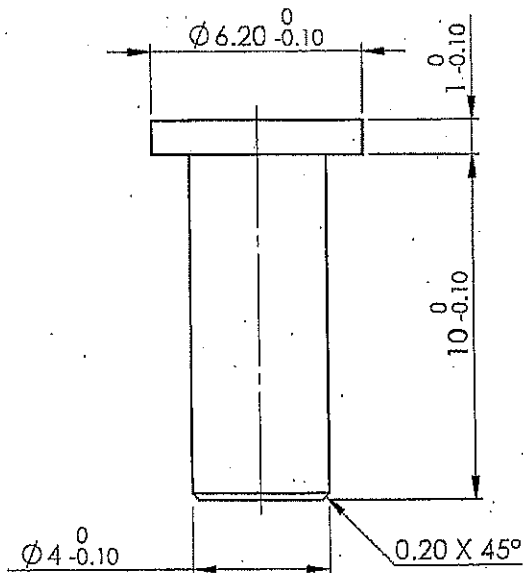
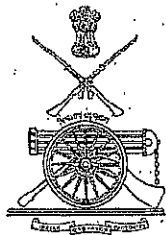
Hardness: 170-260 HV

Protective Finish :
Phosphating to Specn.
JSS: 0465-01-1994 Class II Oil Finish

AMENDMENTS	SIG. & DATE		SIGNATURE & DATE.	SUB: Rivet Trigger Guard Front	SCALE NTS
		TRACED		FOR: Receiver Assy	Weight (g) 0.91
		DRAWN		OF: TRICHY ASSAULT RIFLE	
		CHECKED		DES.REF.NO. K-1105	QPG 4
		OIC/D&DO	<i>P. Foster</i>	DRG. No.: TAR-K-1105	
		OFFICER/PRODN.	<i>G. K...</i>	ORDNANCE FACTORY TIRUCHIRAPPALLI-16.	
DIV.OFFICER/D&DO		SHEETS: 1			
		APPROVED ON. 20/02/2018			SHEET No.: 1

DRG NO.

DIMENSIONS ARE IN mm.
 UNTOLERATED DIMNS. AS PER IS : 2102 (MED)
 MARK DRAWING No.



UN CONTROLLED COPY
 CERTIFIED CORRECT COPY OF APPROVED
 DRAWINGS AT THIS DATE...
 DESIGN & DRAWING OFFICE,
 ORDNANCE FACTORY, TIRUCHIRAPPALLI-620 016.

Material :
 BS:970 Pt.1 1983 Sec.3 Gr.070 M20 (EN3A,3C)
 BS:970 Pt.1 1983 080 M40 (EN-8)
 Alt. Matl.
 IS:7887-1992 Grade 8 or 9

Hardness: 170-260 HV

Protective Finish :
 Phospating to Specn.
 JSS: 0465-01-1994 Class II Oil Finish

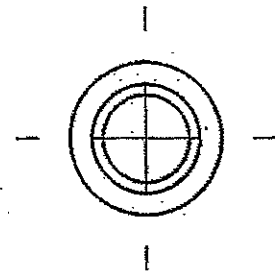
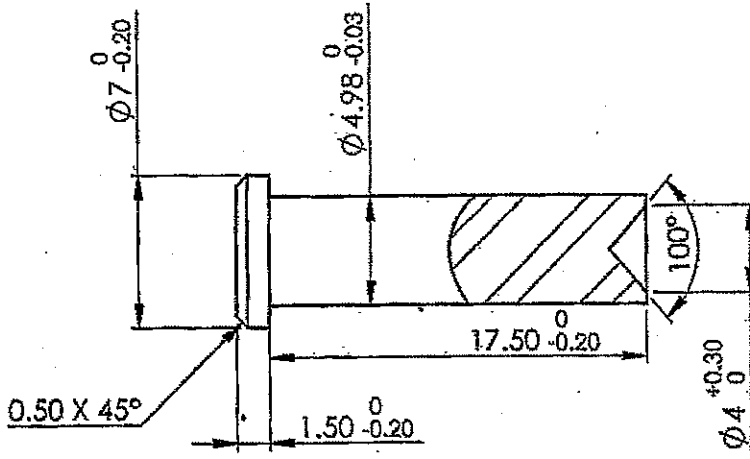
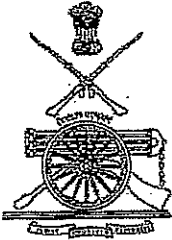
AMENDMENTS	SIG. & DATE		SIGNATURE & DATE.	SUB: Rivet Trigger Guard Rear	SCALE NTS
		TRACED		FOR: Receiver Assy	Weight (g) 1.21
		DRAWN		OF: TRICHY ASSAULT RIFLE	
		CHECKED		DES.REF.NO. K-1107	QPG 1
		OIC/D&DO	<i>P. For</i>	DRG. No.: TAR-K-1107	
		DIV.OFFICER/D&DO	<i>S. Kumar</i>	ORDNANCE FACTORY TIRUCHIRAPPALLI-16.	SHEETS: 1
	APPROVED ON. 20/02/2018			SHEET No.: 1	

DRG. NO.

DIMENSIONS ARE IN mm.

UNTOLERATED DIMNS. AS PER IS : 2102 (MED)

MARK DRAWING No.



UN CONTROLLED COPY
 CERTIFIED CORRECT COPY OF APPROVED
 DRAWINGS AT THIS DATE... 25/10/23
 DESIGN & DRAWING OFFICE,
 ORDNANCE FACTORY, TIRUCHIRAPPALLI-620 016.

Material :

Steel

BS:1429 -1980 Gr.070 A72 NS

BS:970 Pt.1 1983 Gr.708 M40 (or) EN19A

BS:970 Pt.1 1983 Gr.709 M40 (or) EN19

BS:970 Pt.1 1983 Sec.3 Gr.080 M40 (or) EN8, 8A,8B, 8C,8D

BS:970 Pt.1 1983 Sec.3 Gr.070 M55 (or) EN9

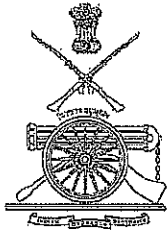
Hardness: 340-400 HV

Protective Finish :

Accelerated Phospating to Specn.

JSS: 0465-01-1994 Class II Oil Finish

			SIGNATURE & DATE.	SUB: Pin Catch Magazine	SCALE
		TRACED			FOR: Receiver Assy
		DRAWN		OF: TRICHY ASSAULT RIFLE	QPG
		CHECKED		DES. REF. NO. K-1113	1
		OIC/D&DO	<i>P. Tolan</i>	DRG. No.: TAR-K-1113	Weight (g)
		OFFICER/PRODN.		ORDNANCE FACTORY TIRUCHIRAPPALLI-16.	3.06
DIV. OFFICER/D&DO	<i>E. K...</i>	SHEETS: 1			
AMENDMENTS	SIG. & DATE	APPROVED ON. 20/03/2018		SHEET No.: 1	

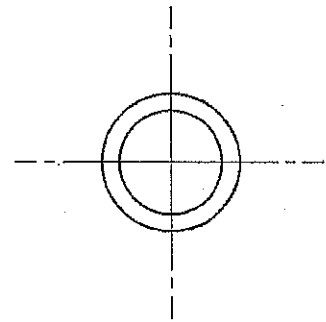
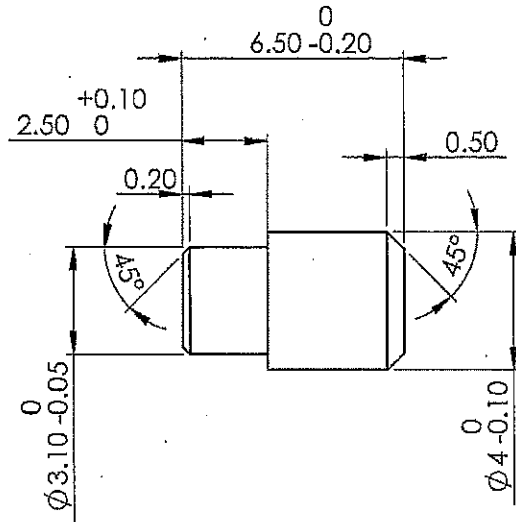


DRG NO.

DIMENSIONS ARE IN mm.

UNTOLERATED DIMNS. AS PER IS : 2102 (MED)

MARK DRAWING No.



UN CONTROLLED COPY
 CERTIFIED CORRECT COPY OF APPROVED
 DRAWINGS AT THIS DATE. 25/10/23
 DESIGN & DRAWING OFFICE,
 ORDNANCE FACTORY, TIRUCHIRAPPALLI-620 016.

Material :
 Steel

BS:970 Pt.1 1983 Sec.3 Gr.080 M40 (or) EN8, 8A,8B, 8C,8D
 BS:970 Pt.1 1983 Sec.3 Gr.070 M20 (or) EN3A,3C

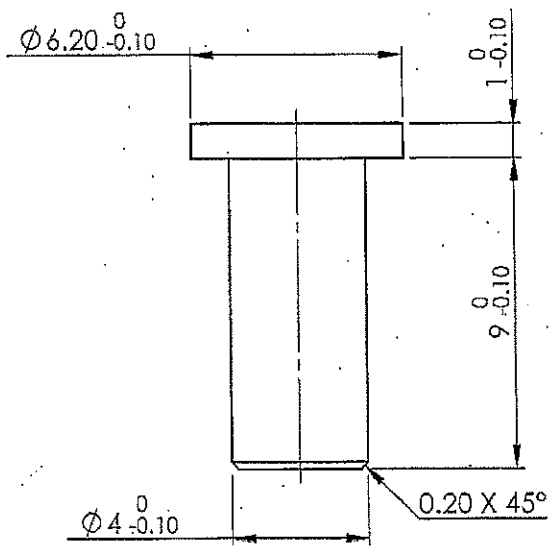
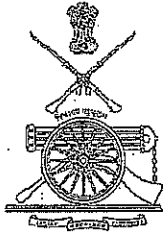
Hardness: 170-250 HV

Protective Finish :
 Phospating to Specn.
 JSS: 0465-01-1994 Class II Oil Finish

AMENDMENTS	SIG. & DATE		SIGNATURE & DATE.	SUB: Rivet Supporting Side	SCALE NTS
		TRACED		FOR: Receiver Assy	QPG 1
		DRAWN		OF: TRICHY ASSAULT RIFLE	Weight (g) 0.53
		CHECKED		DES.REF.NO. K-4014	SHEETS: 1
		OIC/D&DO	<i>P. Torka</i>	DRG. No.: K-4014	SHEET No.: 1
		OFFICER/PRODN.		ORDNANCE FACTORY TIRUCHIRAPPALLI-16.	
APPROVED ON. 18/04/2018.					

DRG. NO.

DIMENSIONS ARE IN mm.
 UNTOLERATED DIMNS. AS PER IS : 2102 (MED)
 MARK DRAWING No.



UN CONTROLLED COPY
 CERTIFIED CORRECT COPY OF APPROVED
 DRAWINGS AT THIS DATE... 05/10/23
 DESIGN & DRAWING OFFICE,
 ORDNANCE FACTORY, TIRUCHIRAPPALLI-620 016.

Material :
 BS:970 Pt.1 1983 Sec.3 Gr.070 M20 (EN3A,3C)
 BS:970 Pt.1 1983 080 M40 (EN-8)
 Alt. Matl.
 IS:7887-1992 Grade 8 or 9

Hardness: 170-260 HV

Protective Finish :
 Phospating to Specn.
 JSS: 0465-01-1994 Class II Oil Finish

AMENDMENTS	SIG. & DATE		SIGNATURE & DATE.	SUB: Rivet Pistol Grip Base	SCALE
		TRACED			FOR: Receiver Assy SF Butt
		DRAWN		OF: TRICHY ASSAULT RIFLE	Weight (g)
		CHECKED		DES.REF.NO.	1.12
		OIC/D&DO	<i>P. Jeyan</i>	DRG. No.: TAR-K-4109	QPG
		DIV.OFFICER/D&DO	<i>S. K. Sankar</i>	ORDNANCE FACTORY TIRUCHIRAPPALLI-16.	1
APPROVED ON. 20/02/2018				SHEETS: 1	
				SHEET No.: 1	