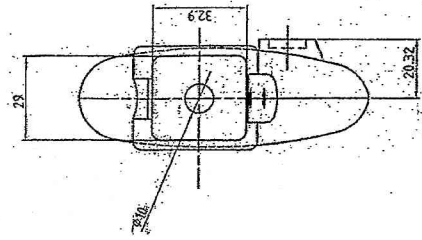
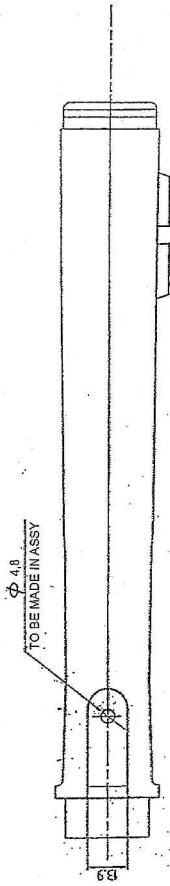


UN CONTROLLED COPY
 CERTIFIED CORRECT COPY OF APPROVED
 DRAWINGS AT THIS DATE: 25/01/22
 DESIGN & DRAWING OFFICE
 ORDNANCE FACTORY, TIRUCHIRAPPALLI - 620 016.

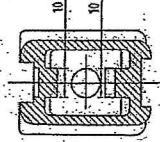
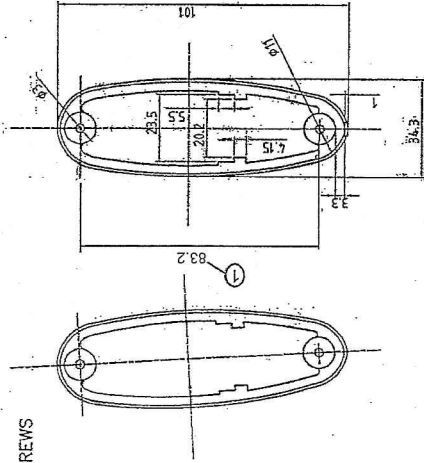
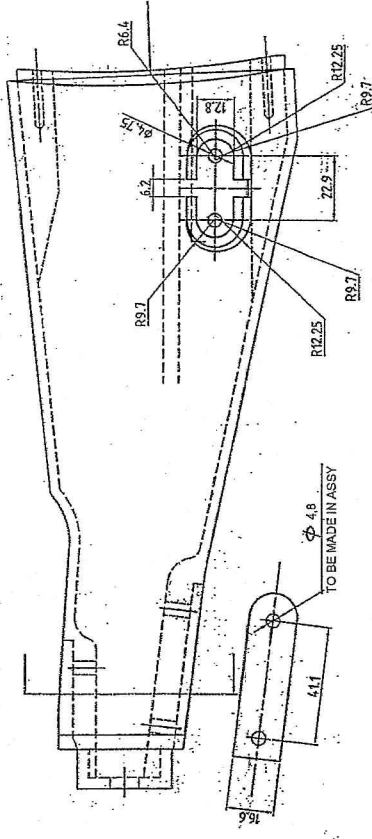
PART NO.	1	PLASTIC BUTT ASSY	1								
	DESCRIPTIONS & NO OF										
SIGNATURE & DATE		SUB: FIXED BUTT ASSY		MATERIAL		TREATMENT		REMARKS		SCALE	
DRAWN		FOR									
CHECKED		OR TRICHY ASSAULT RIFLE -RB-K								STORE BRAND K-3000	
HQS/D&DO		DECL. REF. NO.								OPERATION NO.	
OFFICER / PERSON.		DRG. No.		TAR-RB-K- 3000 *							
DATE		REV									
AMENDMENTS & DATE		APPROVED ON									
DA No. 06/21		SS		ORDNANCE FACTORY		TIRUCHIRAPPALLI - 16.		SHEETS: 1		SHEET No: 1	
DT: 25/01/2022		DESIGN & DRAWING OFFICE		ORDNANCE FACTORY, TIRUCHIRAPPALLI - 620 016.							

Se. K. Na
 DGM
 (NODAL OFFICER FOR TAR)

MATERIAL : GLASS FIBRE REINFORCED POLYAMIDE (NYLON 6) OR (NYLON 66)
 MELTING POINT : NOT LESS THAN 200°C
 COLOUR : MATT FINISH BLACK



STD BUTT SCREWS



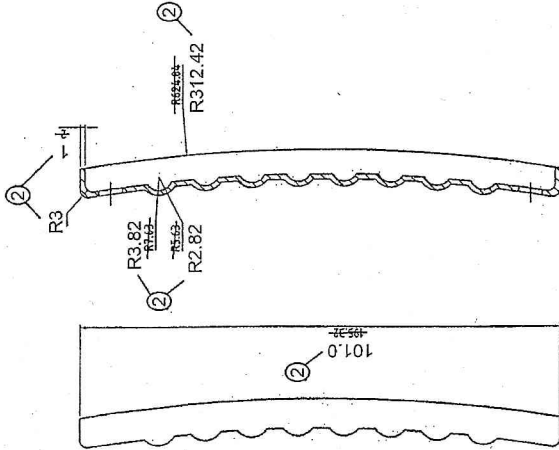
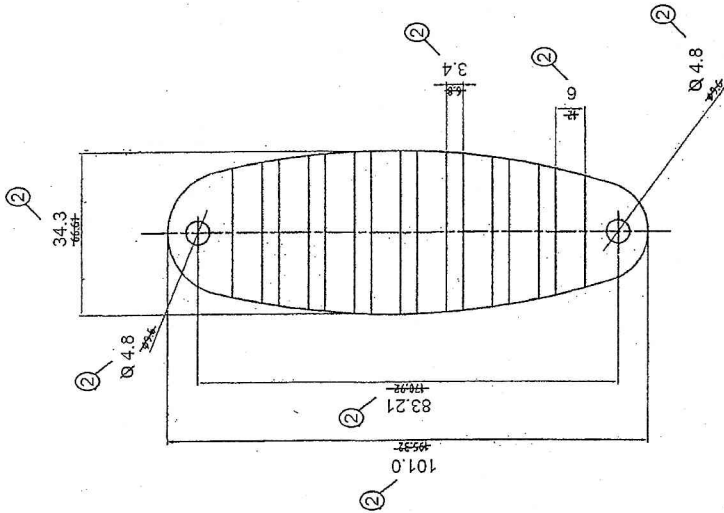
UN CONTROLLED COPY
 CERTIFIED CORRECT COPY OF APPROVED
 DRAWINGS AT THIS DATE: 25/11/22

DESIGN & DRAWING OFFICE,
 OPTIMANCE FACTORY, THIRUCHIRAPPALLI-620 016.

DOM
 (NODAL OFFICER
 FOR TAT)

PART NO.	DESCRIPTIONS & DATE	MATERIAL	TREATMENT	REMARKS
	SUB: PLASTIC BUTT OF GENERAL ASSY FOR: TRICHY ASSAULT RIFLE -RE-K			SCALE
	CHECKED			STORE DRAWING
	DESIGNED			OPERATION IN
	DATE			SHEETS: 1
	APPROVED ON			SHEET NO. 1

DIMENSIONS ARE IN mm
 UNTOLERATED DIMS. AS PER IS : 2102 (MED)
 MARK DRAWING NO.



MATERIAL: BS:1449; Pt.1: 1983, Gr. CS 80 SEC. 4;
 ALT MATL 1: BS:1449; Pt.1: 1983, Gr. CS 40 SEC. 4;
 ALT MATL 2: BS:1449; Pt.1: 1983, Gr. CS 50 SEC. 4;
 ALT MATL 3: BS:1449; Pt.1: 1983, Gr. CS 60 SEC. 4;
 ALT MATL 4: BS:1449; Pt.1: 1983, Gr. CS 70 SEC. 4;

HARDNESS : 300-370 HV
 PROTECTIVE FINISH : PHOSPHATE TO SPECN WPM/GEN-3
 CLASS-II OIL FINISH. (LATEST ISSUE)

UNCONTROLLED COPY
 CERTIFIED CORRECT COPY ON APPROVED
 DRAWINGS AT THIS DATE: 25/01/2021
 DESIGN & DRAWING OFFICE:
 ORDNANCE FACTORY, TIRUCHIRAPPALLI-600 016.

Se Kumar
 DGM
 (NODAL OFFICER
 FOR TAR)

PART NO.	DESCRIPTIONS	NO OFF	MATERIAL	TREATMENT	REMARKS
	SIGNATURE & DATE				SCALE
TRACED			SUB: BUTT PLATE		STORE DRG.NO.
DRAWN			FOR: FIXED BUTT ASSY		OPERATION NO.
CHECKED			OF: TRICHY ASSAULT RIFLE		
HOS/D&DO			DES. REF. NO.		
OFFICER/PRODN.			DRG. No.: K-3004*		
OFFICER/D&DO					
APPROVED ON.					

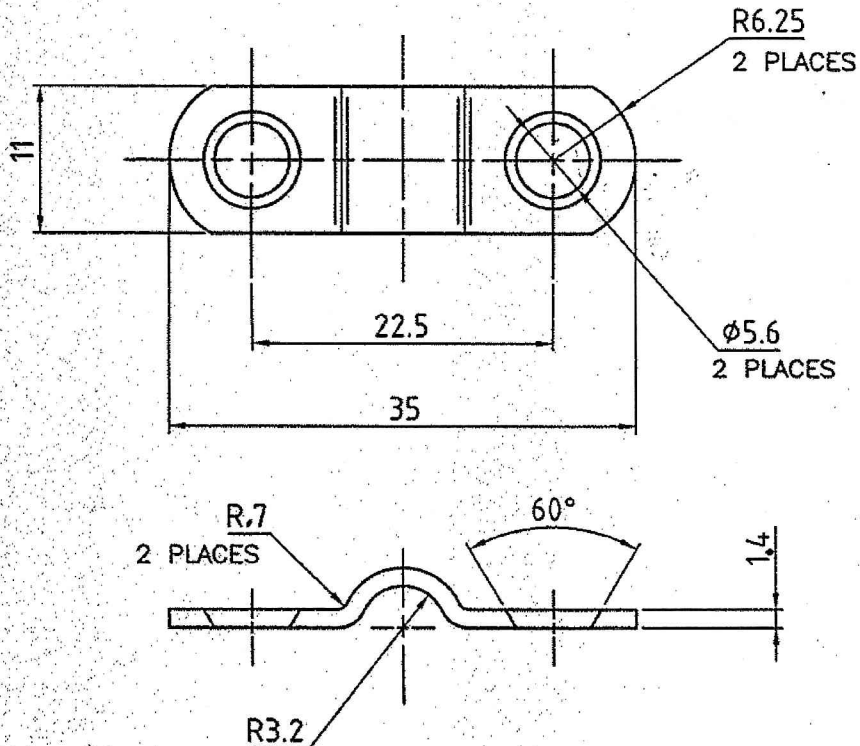
DIMENSIONS ARE IN mm.
 UNTOLERATED DIMNS. AS PER IS : 2102 (MED)
 MARK DRAWING NO.

DIMENSIONS ARE IN mm.

UNTOLERATED DIMNS. AS PER IS : 2102 (MED)

SHARP CORNERS SHOULD BE BLUNT TO R 0.5

TWO SHEET METAL PIECES ARE TO BE SPOT WELDED (K-3021 & K-3022)
WITH LOOP SLING (K-3012)



UN CONTROLLED COPY
 CERTIFIED CORRECT COPY OF APPROVED
 DRAWINGS AT THIS DATE: 25/10/22
 DESIGN & DRAWING OFFICE
 ORDNANCE FACTORY, TIRUCHIRAPPALLI - 620 016.

MATERIAL: STEEL BS:1449 Part1:1983. Sec. 4. Grade CS-4.

- ① ALT MATL 1: BS:1449: Pt.1: 1983, Gr. CS 40 SEC. 4.
- ALT MATL 2: BS:1449: Pt.1: 1983, Gr. CS 50 SEC. 4.
- ALT MATL 3: BS:1449: Pt.1: 1983, Gr. CS 60 SEC. 4.
- ALT MATL 4: BS:1449: Pt.1: 1983, Gr. CS 70 SEC. 4.
- ALT MATL 5: BS:1449: Pt.1: 1983, Gr. CS 80 SEC. 4.

ANNEALED CONDITION

PROTECTIVE FINISH : PHOSPATED TO SPECIFICATION. JSS : 0465-01-1994

E. K. K.
DGM/WP
(NODAL OFFICER
FOR TAR)

1	CLAMP	1	AS ABOVE		
PART NO.	DESCRIPTIONS	NO OFF	MATERIAL	TREATMENT	REMARKS
	SIGNATURE & DATE.	SUB: CLAMP			SCALE NTS
TRACED	<i>SK</i>	FOR: FIXED BUTT ASSY			STORE DRG.NO. K-3022
DRAWN		OF: TRICHY ASSAULT RIFLE			
CHECKED		DES.REF.NO.			OPERATION NO. ----
HOS/D&DO	<i>JK</i>	DRG. No.: TAR-RB-K-3022			
OFFICER/PRODN.		ORDNANCE FACTORY TIRUCHIRAPPALLI-16.			SHEETS: 1
OFFICER/D&DO	<i>SK</i>				SHEET No.: 1
AMENDMENTS	SIG. & DATE	APPROVED ON.			

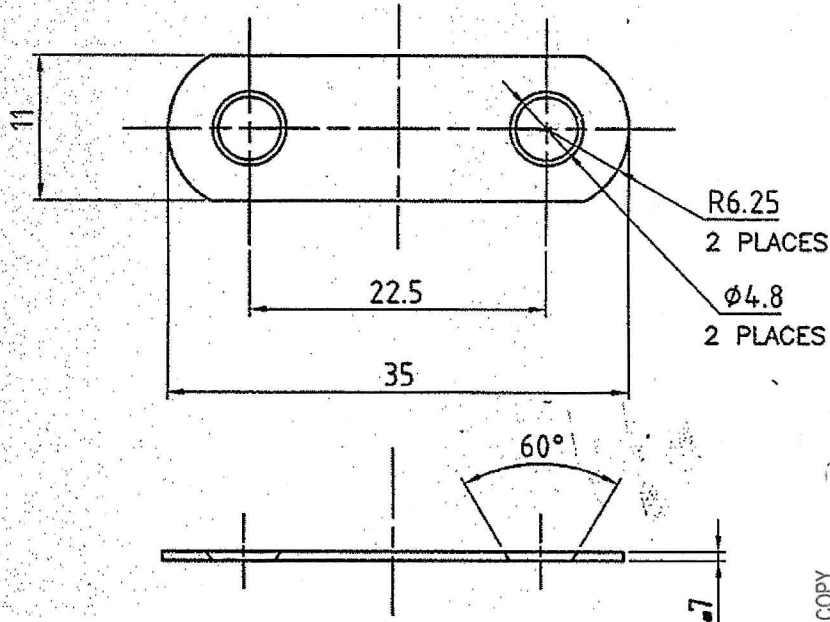
①

DIMENSIONS ARE IN mm.

UNTOLERATED DIMNS. AS PER IS : 2102 (MED)

SHARP CORNERS SHOULD BE BLUNT TO R 0.5

TWO SHEET METAL PIECES ARE TO BE SPOT WELDED. (K 3021 & K 3022)
WITH LOOP SLING (K-3012)



MATERIAL: STEEL BS:1449 Part1:1983, Sec. 4, Grade CS-4.

- ① ALT MATL 1: BS:1449: Pt.1: 1983, Gr. CS 40 SEC. 4.
- ALT MATL 2: BS:1449: Pt.1: 1983, Gr. CS 50 SEC. 4.
- ALT MATL 3: BS:1449: Pt.1: 1983, Gr. CS 60 SEC. 4.
- ALT MATL 4: BS:1449: Pt.1: 1983, Gr. CS 70 SEC. 4.
- ALT MATL 5: BS:1449: Pt.1: 1983, Gr. CS 80 SEC. 4.

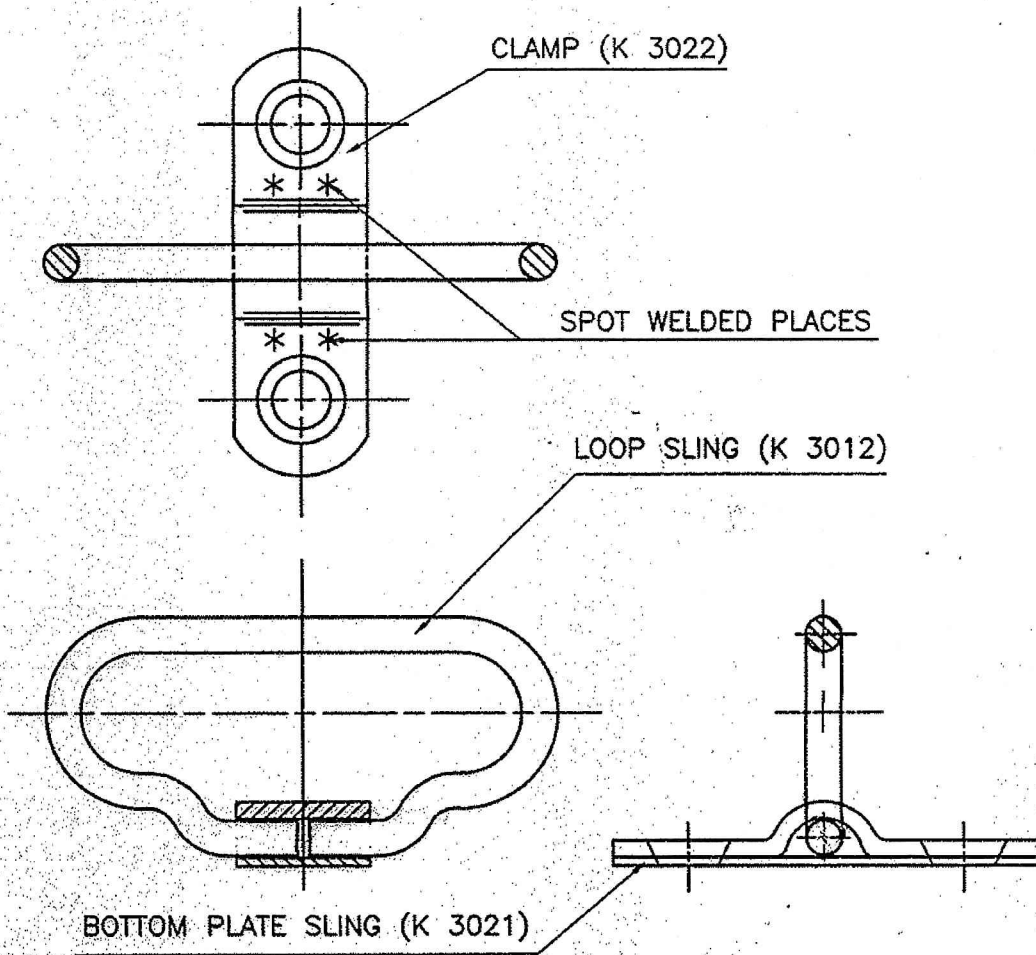
ANNEALED CONDITION

PROTECTIVE FINISH : PHOSPATED TO SPECIFICATION. JSS : 0465-01-1994

UN CONTROLLED COPY
 CERTIFIED CORRECT COPY OF APPROVED
 DRAWINGS AT THIS DATE... 25/01/22
 DESIGN & DRAWING OFFICE,
 ORDNANCE FACTORY, TIRUCHIRAPPALLI - 620 016.

Se. Kona DGM/WP (NODAL OFFICER FOR TAR)		1	BOTTOM PLATE SLING	1	AS ABOVE		
		PART NO.	DESCRIPTIONS	NO OFF	MATERIAL	TREATMENT	REMARKS
DA.No.05/18 20.03.18 AMENDMENTS SIG.& DATE		SIGNATURE & DATE <i>[Signature]</i>		SUB: BOTTOM PLATE SLING FOR: FIXED-BUTT ASSY OF: TRICHY ASSAULT RIFLE			SCALE NTS
		TRACED <i>[Signature]</i>		DES.REF.NO.			STORE DRG.NO. K-3021
		DRAWN		DRG. No.: TAR-RB-K-3021			OPERATION NO. ----
		CHECKED		HOS/D&DO <i>[Signature]</i>			SHEETS: 1 SHEET No.: 1
		OFFICER/ PRODN.		OFFICER/ D&DO <i>[Signature]</i>			
APPROVED ON.		(FT) ORDNANCE FACTORY TIRUCHIRAPPALLI-16.					


DIMENSIONS ARE IN mm.
 UNTOLERATED DIMNS. AS PER IS : 2102 (MED)
 SHARP CORNERS SHOULD BE BLUNT TO R 0.5



UN CONTROLLED COPY
 CERTIFIED CORRECT COPY OF APPROVED
 DRAWINGS AT THIS DATE. 25.01.22

DESIGN & DRAWING OFFICE,
 TIRUCHIRAPPALI-620 016.

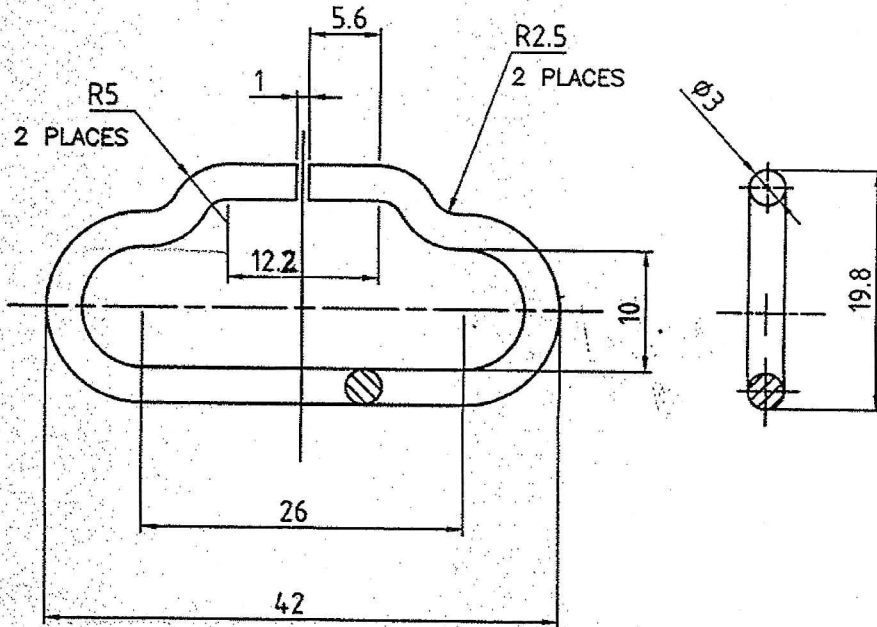
C. K. K. K.
 DGM/WP
 (NODAL OFFICER
 FOR TAR)

PART NO.	DESCRIPTIONS	NO OFF	MATERIAL	TREATMENT	REMARKS
1	LOOP SLING ASSY	1			
	SIGNATURE & DATE	SUB: LOOP SLING SUB ASSY			SCALE NTS
	TRACED <i>SK</i>	FOR: FIXED BUTT ASSY			STORE DRG.NO. K-3020
	DRAWN	OF: TRICHY ASSAULT RIFLE			OPERATION NO. -----
	CHECKED	DES.REF.NO.			SHEETS: 1
	HOS/D&DO <i>AK</i>	DRG. No.: TAR-RB-K-3020			SHEET No.: 1
	OFFICER/PRODN.	 ORDNANCE FACTORY TIRUCHIRAPPALI-16.			
	OFFICER/D&DO <i>AK</i>				
AMENDMENTS	SIG. & DATE	APPROVED ON.			

DIMENSIONS ARE IN mm.
 UNTOLERATED DIMNS. AS PER IS : 2102 (MED)
 SHARP CORNERS SHOULD BE BLUNT TO R 0.5

UN CONTROLLED COPY
 CERTIFIED CORRECT COPY OF APPROVED
 DRAWINGS AT THIS DATE: 25.01.22

DESIGN & DRAWING OFFICE,
 ORDNANCE FACTORY, TIRUCHIRAPPALI - 620 016.



MATERIAL: : IS: 280-2006 ANNEALED (OR) SOFT (OR) 1/4 HARD
 OR
 BS:970-Pt.5, 1972 Gr.070 A72 (OR) Gr.070 A78
 OR
 En 42, 42B, 42C, 42D, 42E, 42F, 42G, 42J

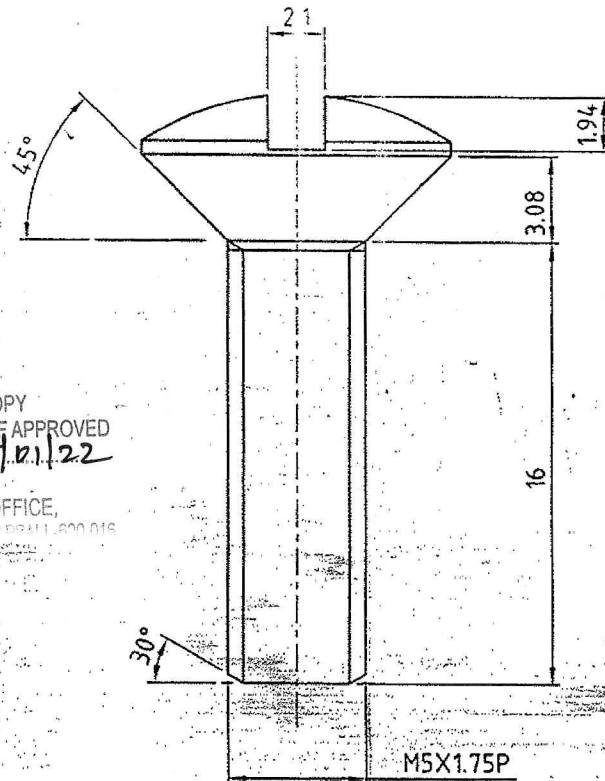
PROTECTIVE FINISH : PHOSPHATE TO SPECN JSS:0465:01-1994

S. Kna
 DGM/WP
 (NODAL OFFICER
 FOR TAR)

PART NO.	DESCRIPTIONS	NO OFF	MATERIAL	TREATMENT	REMARKS
1	LOOP SLING	1		AS ABOVE	
	SIGNATURE & DATE.	SUB: LOOP SLING			SCALE
	TRACED	FOR: FIXED BUTT ASSY			NTS
	DRAWN	OF: TRICHY ASSAULT RIFLE			STORE DRG.NO.
	CHECKED	DES.REF.NO.			K-3012
	HOS/D&DO	DRG. No.:			OPERATION NO.
	OFFICER/PRDN.	TAR-RB-K-3012			----
	OFFICER/D&DO	ORDNANCE FACTORY			SHEETS: 1
	APPROVED ON.	TIRUCHIRAPPALLI-16.			SHEET No.: 1

AMENDMENTS
 SIG. & DATE

9006-K ON 980



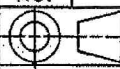
UN CONTROLLED COPY
 CERTIFIED CORRECT COPY OF APPROVED
 DRAWINGS AT THIS DATE 25/01/22

DESIGN & DRAWING OFFICE,
 TIRUCHIRAPPALLI, 600 016

MATERIAL:- STEEL BS:970 PT.3:1991 GR.070 M20
 OR STANDARD WOODEN SCREW AS PER IS:280 STD, BRIGHT
 OR STANDARD HARDWARE SCREWS (COLD DRAWN, THREAD ROLLING) CAN BE USED

PROTECTIVE FINISH:- PHOSPHATE TO SPECN. JSS:0465-01:1988
 CLASS II (ACCELERATED), OIL FINISH.

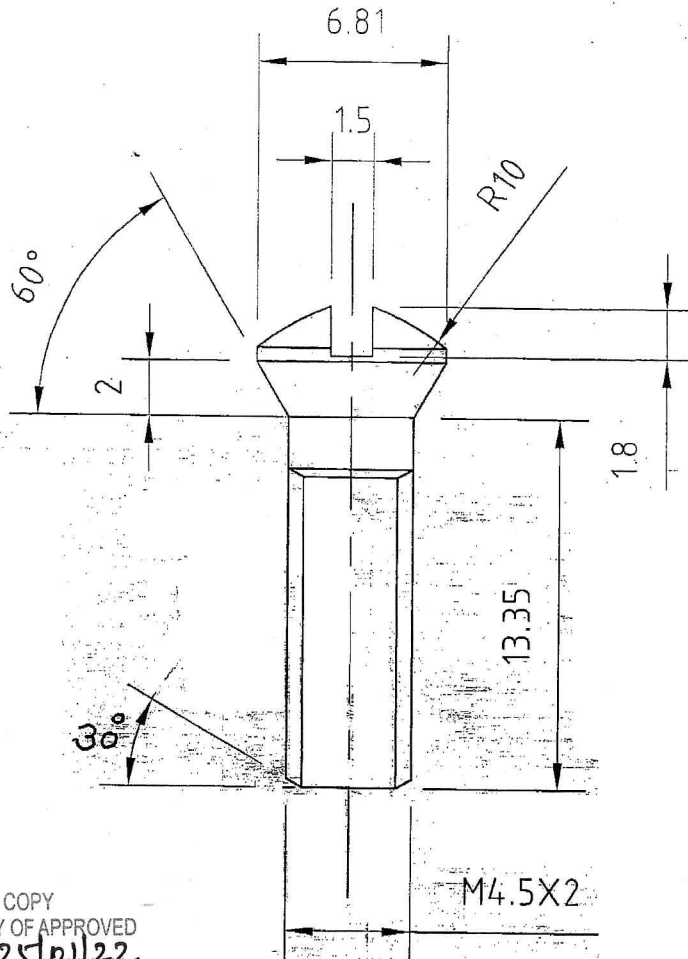
S. K.
 DGM/PROJ

PART NO.	DESCRIPTIONS	NO OFF	MATERIAL	TREATMENT	REMARKS
 TRACED DRAWN CHECKED HOS/D&DO OFFICER/PRODN. OFFICER/D&DO	SIGNATURE & DATE.	SUB: BUTT SCREW (ROUNDED COUNTERSUNK SCREW) FOR: GENERAL ASSY OF: TRICHY ASSAULT RIFLE			SCALE ---
	DES. REF. NO.			STORE DRG. NO. K-3006	
	DRG. No.: K-3006			OPERATION NO. ---	
	APPROVED ON.			SHEETS: 1	
				SHEET No.: 1	
	AMENDMENTS	SIG. & DATE			



ORDNANCE FACTORY
 TIRUCHIRAPPALLI-16.

DRG. NO. K-3005



UN CONTROLLED COPY
 CERTIFIED CORRECT COPY OF APPROVED
 DRAWINGS AT THIS DATE. 25/01/22

DESIGN & DRAWING OFFICE,
 ORDNANCE FACTORY TIRUCHIRAPPALLI-16

MATERIAL :- STEEL BS:970 PT.3: 1991 Gr.070 M20
 OR STANDARD WOODEN SCREW AS PER IS:280 STD, BRIGHT
 OR STANDARD HARDWARE SCREWS (COLD DRAWN, THREAD ROLLING) CAN BE USED

PROTECTIVE FINISH:- PHOSPHATE TO SPECN. JSS:0465-01:1988
 CLASS II (ACCELERATED), OIL FINISH.

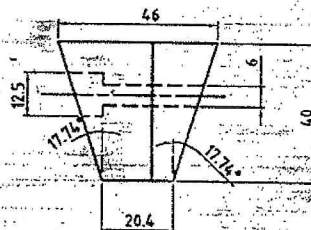
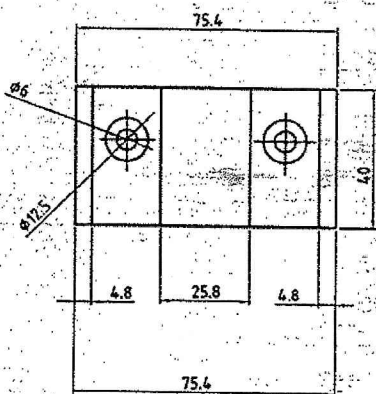
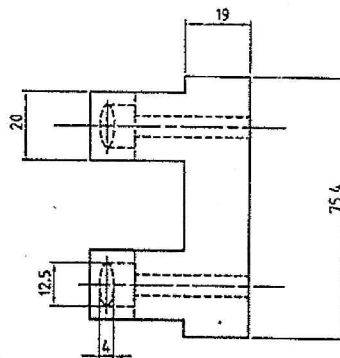
S. K. M.
 DGM
 (NODAL OFFICER
 FOR TAR)

PART NO.	DESCRIPTIONS	NO OFF	MATERIAL	TREATMENT	REMARKS
⊕	SIGNATURE & DATE.	SUB: SCREW, BUTT PLATE			SCALE
TRACED		FOR: FIXED BUTT ASSY			STORE DRG.NO.
DRAWN		OF: TRICHY ASSAULT RIFLE			REF: ROMANIA
CHECKED		DES. REF. NO.			OPERATION NO.
HOS/D&DO		DRG. No.: K-3005			---
OFFICER/ PRODN.		ORDNANCE FACTORY TIRUCHIRAPPALLI-16.			SHEETS: 1
OFFICER/ D&DO					SHEET No.: 1
AMENDMENTS	SIG. & DATE	APPROVED ON.			

DRG. NO. K-3003

DIMENSIONS ARE IN mm.
 UNTOLERATED DIMNS. AS PER IS : 2102 (MED)
 MARK DRAWING No.

UN CONTROLLED COPY
 CERTIFIED CORRECT COPY OF APPROVED
 DRAWINGS AT THIS DATE... 25/01/22



MATERIAL

GLASS FIBRE REINFORCED POLYAMIDE (NYLON 6) OR (NYLON 66)

MELTING POINT : NOT LESS THAN 200° C

COLOUR : BLACK MATT FINISH

Ge. K...
 DGM
 (NODAL OFFICER
 FOR TAR)

PART NO.	DESCRIPTIONS	NO OFF	MATERIAL	TREATMENT	REMARKS
	SIGNATURE & DATE.		SUB: SUPPORTING PIECE		SCALE NTS
	TRACED		FOR: FIXED BUTT ASSY		STORE DRG. NO.
	DRAWN		OF: TRICHY ASSAULT RIFLE		OPERATION NO.
	CHECKED		DES. REF. NO.		---
	HOS/D&DO		DRG. No.: K-3003		
	OFFICER/ PRODN.		ORDNANCE FACTORY TIRUCHIRAPPALLI-16.		SHEETS: 1
	OFFICER/ D&DO				SHEET No.: 1
AMENDMENTS	SIG. & DATE	APPROVED ON.			