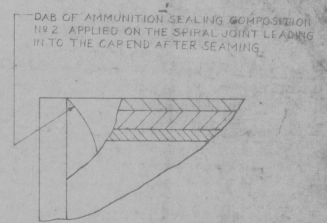
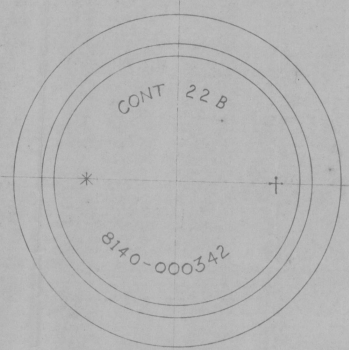
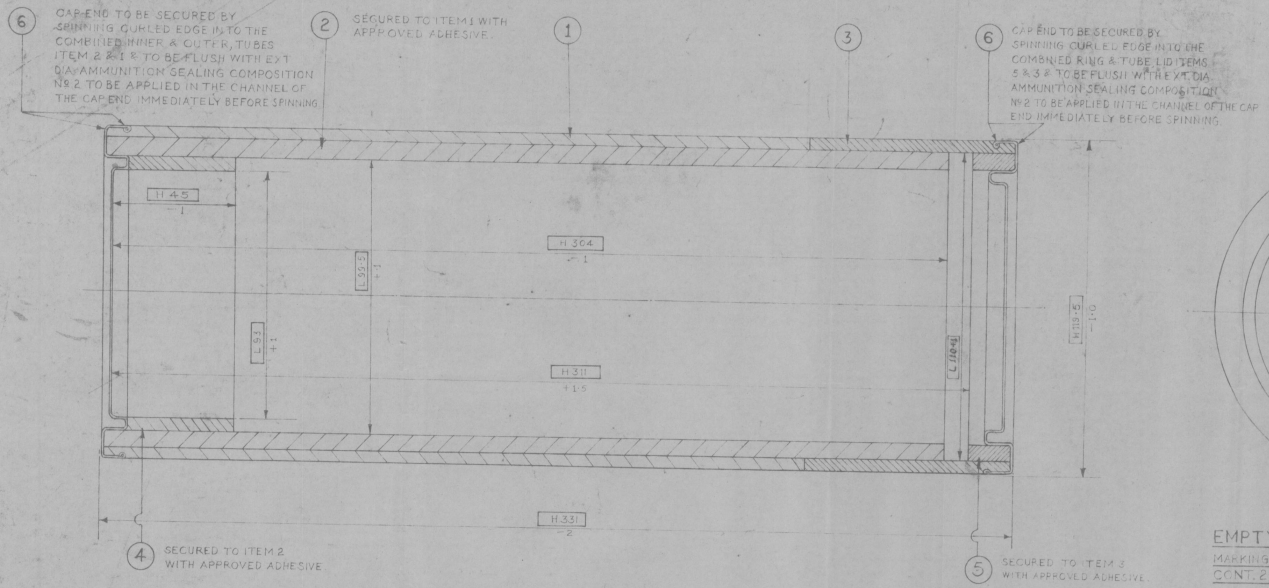


PART NO  
1SV 376 A  
D.C.I. 29740-A  
D.S. CAT. NO 8140-000342

FOR EXPLANATION OF DIMENSIONING ETC. SEE  
THIRD ANGLE PROJECTION. DIMENSIONS ARE IN MM



**NOTES**

**FINISH**—  
THE CONTAINER WILL BE FINISHED WITH TWO COATS OF APPROVED VARNISH SHELLAC APC 225, 39% TO SPECN 1331-69-1007 EXTERNALLY AND INTERNALLY & THOROUGHLY DRIED.

ENDS OF PAPER CONTAINERS AND PAPER COMPONENTS TO BE SEALED WITH AMMUNITION SEALING COMPOSITION NO 2.

DIMENSIONS H/L GIVEN ARE AFTER VARNISHING AND FOR GAUGING PURPOSES ONLY.

□ TO BE GAUGED

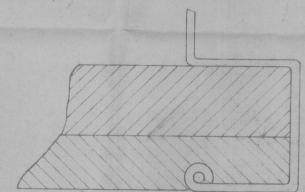
MANUFACTURE SHOULD BE IN ACCORDANCE WITH SPECN CIA 2805 LATEST ISSUE.

THE CRIMPED METAL CAPS END SHALL WITHSTAND A LOAD OF 360 Kg MINIMUM WHEN TESTED IN ACCORDANCE WITH SPECN CIA 2505.

TOL ON UNTOL. DIMENS ± 0.5

**EMPTY MARKING**  
MARKING EMBOSSED ON CAPS END IN 9.5 mm TYPE  
CONT. 22 B  
+ CONTRACTOR'S INITIALS OR RECOGNISED TRADE MARK.  
\* YEAR OF MANUFACTURE  
D.S. CAT. NO 8140-000342.

LIST OF COMPONENTS					
ITEM NO	DESCRIPTION	DESIGNER'S REF	PART NO	D.S. CAT. NO	QTY PER SET
1	TUBE, OUTER	CIA/AMN/1292 0811	1SV 1144		1
2	TUBE, INNER	CIA/AMN/1292 0811	1SV 1145		1
3	TUBE, LID	CIA/AMN/1292 0813	1SV 1146		1
4	COLLAR	CIA/AMN/1292 0815	1SV 1147		1
5	RING FOR LID	CIA/AMN/1292 0815	1SV 1148		1
6	CAP, END	CIA/AMN/1292 0816	1SV 1149		2



ENLARGED VIEW SHOWING SPINNING THE CURLED EDGE ON CAP, END ON TO — (a) TUBE OUTER & TUBE INNER (b) TUBE LID & RING FOR LID.  
SCALE — 4/1

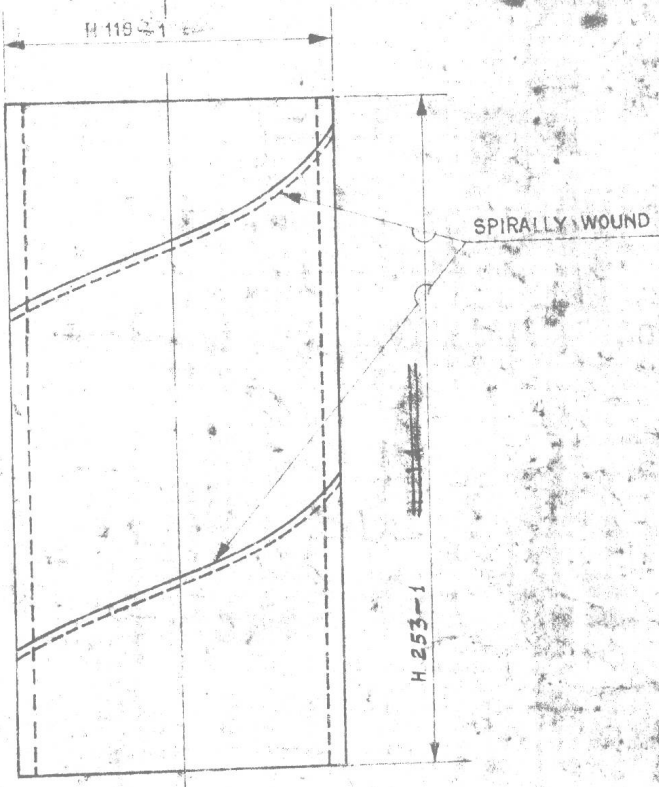
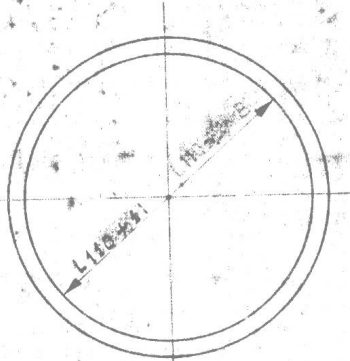
DATE	AUTHORITY	ZONE	NATURE	SIG	SIB
DRG SEALED — 28-12-70			AMENDMENTS	IAHSP	L.D.G.

D.S. CAT. NO 8140-000342	
PROTECTIVE FINISH	MATERIAL
ESTIMATED MASS	SCALE — UNLESS OTHERWISE STATED
<p><b>AMN. CONTAINER 22 B /L/</b></p> <p>ROLLED PAPER, LAMINATED, WATERPROOF WITH STEEL CAPS, END, FOR PACKAGE AMMUNITION CONTAINER ASSEMBLY, 73B</p>	
APPROVED	DATE: 30-9-68
DESIGNER'S REF: CIA/AMN/1292	DETAILS: 1SV 376 A
C. I. (A) KIRKEL	

PART NO  
ISV 1144

FOR EXPLANATION OF DIMENSIONING ETC. SEE  
THIRD ANGLE PROJECTION. DIMENSIONS ARE IN MM.

DCI 28267-A



**MATERIAL**

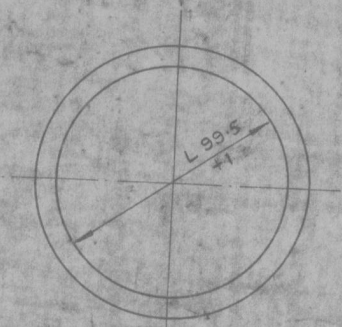
PAPER LAMINATED TO SPECN.  
IND/ME/786 (PROV).  
NOTE: TOL. ON UNTOL. DIMNS. ± 0.5

2311 76			DCI 32186-A	DIMENSION H 119 ± 1 WAS H 116 ± 1	ASSLY. DRG. :- ISV 376 A INSP. INSTRS. :- DRAWN CHECKED TRACED TRM. CHD.
22576			DCI 32009-A	INT. DIA. "L 110 ± 1" WAS "L 108.8 ± 1" LENGTH "H 253 ± 1" WAS "H 214 ± 1"	
18107			DCI 30534-A	DIMENSION L 108.8 ± 1 WAS L 110 ± 1 & H 214 ± 1 WAS H 253 ± 1	CHIEF D'MAN
221275			DCI 29740-A	DRAWING RATIONALISED AND NEW COPY OF DRG. SEALED IN SUPERSESSION OF OLD SEALED DRG. OF THE SAME NO.	GROUP OFFICER
20101			DCI 29267-A	DRG. SEALED DRG. PROV. SEALED	D.O. C.I.A.
DATE	AUTHORITY	ZONE	NATURE		SIG. S.C. AHSP D.O.
APPROVED					
AMENDMENTS					
DRG. SEALED :- 20-6-69 (PROV) 22-12-70					
MATERIAL :- AS ABOVE					
PROTECTIVE FINISH :-					
ESTIMATED WEIGHT :-					
SCALE :- 1/2					
TUBE, OUTER					
DATE - 30-5-69					
DESIGNER'S REF. CIA/AMN/1200					
DETAIL NO 1					
PART ISV 1144					
C.A. K. P. M.					

PART NO  
ISV 1145

FOR EXPLANATION OF DIMENSIONING ETC, SEE  
THIRD ANGLE PROJECTION. DIMENSIONS ARE IN MM.

DCI 29262-A



TO BE SNUG SLIDING FIT  
INDIA. L 108.8 +1  
L 110 +1



SPIRALLY WOUND.

MATERIAL :-  
PAPER LAMINATED TO  
SPECN. IND/ME/78G (PROV)

NOTE: TOL. ON UNTOL DIMNS ±0.5

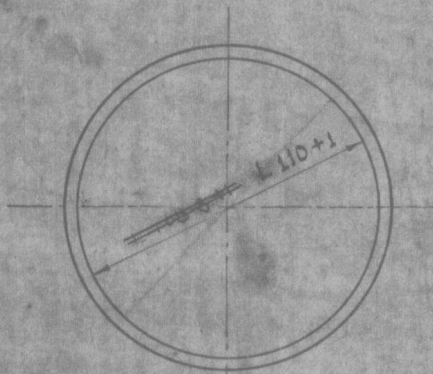
			ASSLY DRG. :- ISV 276-A
			INSP. INSTRS. :-
23 1/2 76	DCI 32186-A	DIMENSION "L 110 +1" WAS "L 108.8 +1"	DRAWN CHECKED
22 1/2 76	DCI 32005-A	DIMENSION L 108.8 +1 WAS L 110 +1	TRACED
14 1031	DCI 30534-A	DRAWING RATIONALISED AND NEW COPY OF DRG. SEALED IN SUPERSESSION OF OLD SEALED DRG. OF THE SAME NO.	TRN. CHD.
22 1/2 76	DCI 29740-A	DRG. SEALED	M. A. K.
22 1/2 76	DCI 29262-A	DRG. PROV. SEALED	GROUP OFFICER
DATE	AUTHORITY ZONE	NATURE	D. O. CIA
		AMENDMENTS	FOR CIA
		DRG. SEALED :- 20-6-69 (PROV) 22-12-70	APPROVED
		MATERIAL :- AS ABOVE.	DATE :- 30-5-69
		PROTECTIVE FINISH :-	DESIGNER'S REF
		ESTIMATED WEIGHT :-	CIA/AMN/1252
		SCALE :- 1/2	DETAIL :- 2
			PART NO
			ISV 1145
			C. H. A. KIRK

TUBE, INNER.

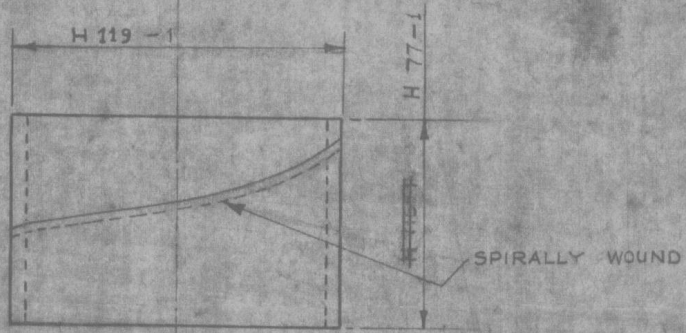
PART NO  
**ISV 1146**

FOR EXPLANATION OF DIMENSIONING ETC. SEE  
 THIRD ANGLE PROJECTION. DIMENSIONS ARE IN M.M.

DCI 29262-A



NOTE  
 SAME MANDRIL TO BE  
 USED AS FOR TUBE, OUTER.



**MATERIAL**

PAPER LAMINATED TO SPECN.  
 IND/ME/786 (PROV)

NOTE: TOL. ON UNTOL. DIMNS. ± 0.5

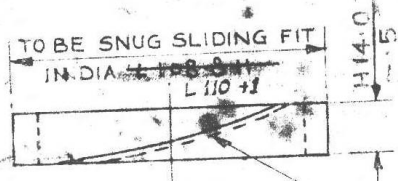
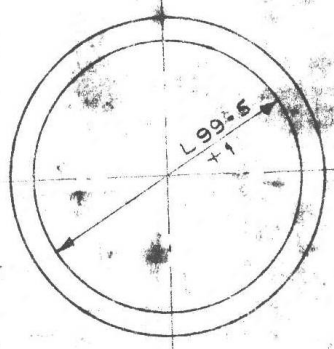
22-3-69	DCI 34348-A	DIMENSION H 119 -1 WAS H 116 -1		ASSEMBLY DRG:- ISV 376-A	
23-4-76	DCI 32186-A	INT. DIA. "L 110+1" WAS "L 108.8+1" LENGTH "H 77-1" WAS "H 116-1"		INSTR. INSTRS:-	
23-6-76	DCI 32009-A	DIMENSION L 108.8 +1 WAS DIM H 116 -1 WAS H 77 -1		DRAWN	
14-10-72	DCI 30534-A	DRAWING RATIONALISED AND NEW COPY OF DRG. SEALED IN SUPERSESSION OF OLD SEALED DRG. OF THE SAME NO.		CHECKED	
22-12-70	DCI 129740-A	DRG. SEALED		TRACED	
20-6-69	DCI 29262A	DRG. PROV SEALED		TRM CHD.	
DATE	AUTHORITY	ZONE	NATURE	SIG.	SIG.
				AMSP	D.O.
AMENDMENTS				Y.R.B.	<i>[Signature]</i>
DRG SEALED.- 20-6-69 (PROV) 22-12-70				CHIEF D'MAN	GROUP OFFICER
MATERIAL :- AS ABOVE					D.O. CIA.
PROTECTIVE FINISH:-				APPROVED	<i>[Signature]</i>
ESTIMATED WEIGHT:-					FGK C.I.
SCALE:- 1/2				DATE:- 30-5-69	
TUBE LID				DESIGNER'S REF	
				CIA/AMN/1282	
				DETAIL NO 3	
				PART NO	
				ISV 1146	
				C. I. A. KIRKEE.	

PART NO.  
ISV 1148

FOR EXPLANATION OF DIMENSIONING ETC.,  
THIRD ANGLE PROJECTION. DIMENSIONS ARE IN MM.

DCI 29262-A

NOTE:-  
SAME MANDRIL TO BE USED  
AS FOR TUBE INNER.



SPIRALLY WOUND

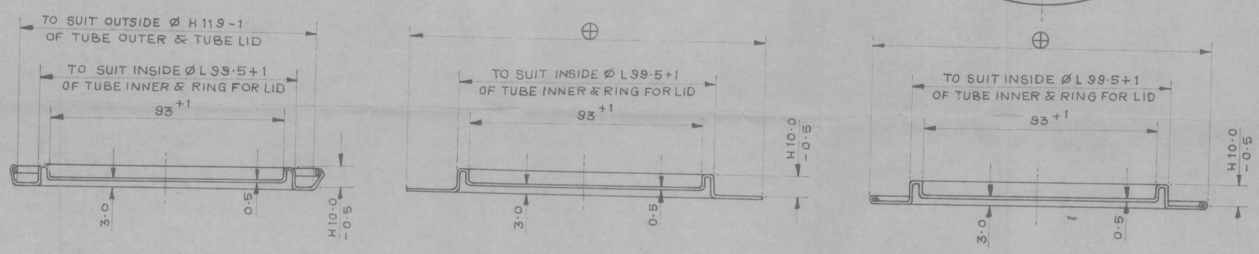
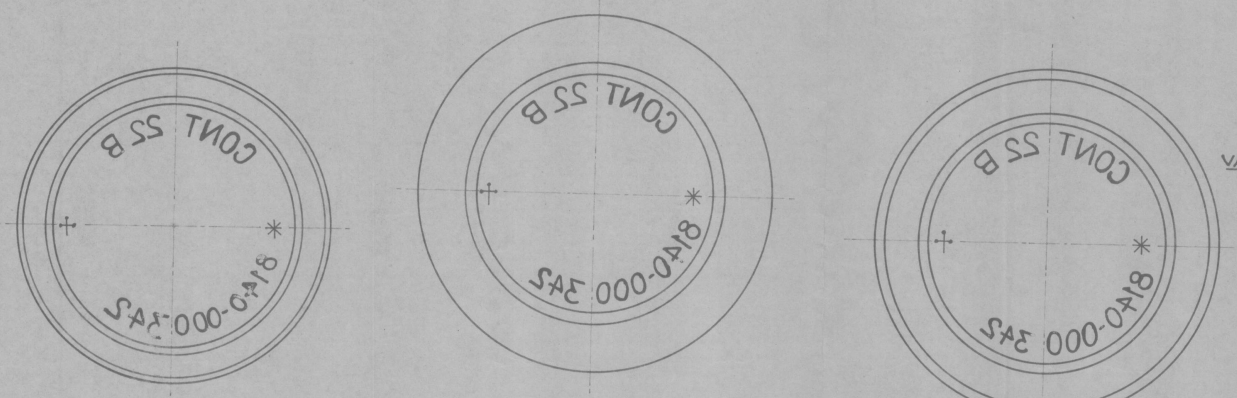
MATERIAL:-  
PAPER LAMINATED TO  
SPECN. IND/ME/786 (PROV.)  
NOTE: TOL. ON UNTOL. DIMNS ± 0.5

25-3-68	DCI 34348-A					ASSLY. ORG:- ISV 376-A
23-11-68	DCI 32186-A					INSP. INSTRS:-
28-6-70	DCI 32009-A					DRAWN CHECKED TRACED TRNGD
14-10-70	DCI 30534-A					C.G.K. (22)
22-12-70	DCI 129740-A					CHIEF D'MAN GROUP OFFICER
20-6-69	DCI 29262-A					D.O. CIA
DATE	AUTHORITY	ZONE	NATURE	SIG.	SIG.	APPROVED
			AMENDMENTS	APP	D.O.	FOR CIA
DRG SEALED:- 20-6-69 (PROV) 22-12-70						D.O. CIA
MATERIAL:- SEE ABOVE						DATE - 30-5-69
PROTECTIVE FINISH:-						DESIGNER'S REF.
ESTIMATED WEIGHT:-						CIA/AMN/1292
SCALE - 1/2						DETAIL NO 5
RING FOR LID						PART NO.
						ISV 1148
						CIA/KIRKE

ISV 1149

DRG. CONVENTIONS CONFORM TO IS: SPECIFICATIONS.  
PART No DIMENSIONS ARE IN m.m.

D.C. 29262-A



ALTERNATIVE METHOD

NOTE:-

⊕ TO BE ADJUSTED TO GIVE L 9.0+0.5 HEIGHT AFTER CRIMPING

TOL. ON UNTOL. DIMNS. ± 0.5

VARNISHING:-

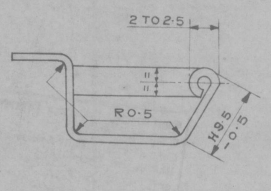
CAPS END ARE TO BE PROTECTED ALL OVER WITH ONE COAT OF VARNISH SHELLAC APC 225, 30% TO SPEC. JSS 1-63-11 AFTER CLEANING AND INSPECTION THE CAPS, END TO BE PHOSPHATED OR ZINC PLATED IN ACCORDANCE WITH SPEC. I.A. 1279 - (CLASS OF PHOSPHATING IS CLASS II) OR IS: 1573-1960 RESPECTIVELY

MATERIAL :-

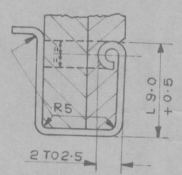
- MILD STEEL SHEET/STRIP TO ANY OF THE FOLLOWING SPECS.
- a) IS: 1079:1968 GRADE ST 34 HOT ROLLED AND ANNEALED
- b) IS: 513:1963 COLD ROLLED AND ANNEALED BEST SURFACE TYPE 'D'
- c) BS. 1449 PT 3B-1964-CS 4 COLD ROLLED AND ANNEALED.
- d) BS 1449 PT 3A-1964-HS 4A HOT ROLLED AND ANNEALED OR TIN PLATE BEST COKE GRADE DEEP STAMPING PRIME QUALITY TO SPEC. IS. 597 (LATEST ISSUE).

MARKING TO BE EMBOSSED ON FROM OUT SIDE IN 9.5 mm TYPE CONTAINER 22 B

- ⊕ CONTRACTOR'S INITIALS OR RECOGNISED TRADE MARK.
  - \* YEAR OF MANUFACTURE
- D.S. CAT. No 8140-000342



ENLARGED VIEW



ENLARGED VIEW

31-3-93	RETRACTED WITHOUT CHANGE	DRN:-	CHD:-	TRD:-	COMP:-	ASSY. DRG.	ISV 376 A
	PREVIOUS D.C. No. 29262-A, 29670-A, 29740-A, 30534-A, 30923-A, 31089-A, 32772-A, 33171-A, & 34348-A.	SD/-	CD MAN	SD/-	APPD.	SCALE:- 3:4	DESIGNER'S REF.
RN#	DATE	AUTHORITY	REVISION	ZONE	AHSP	D.O.	CIA/AMN/1292 DETN 6
					SIGN.	FOR CQA(A)	DATE:- 30-5-69
DRG. SEALED:- 20-6-69 (PROV.) 22-12-70				MATL:- AS ABOVE		PART No	
				PROTECTIVE FINISH:-		ISV 1149	
						D.S. CAT No 8140-000342	
						AHSP:- CQA(A) KIRKEE	

CAP, END