

38505
7490316001
R344

2

DWG NO 077902A-00

SH 1

1

SHEET REV RECORD

ALL SHEETS ARE THE SAME REVISION

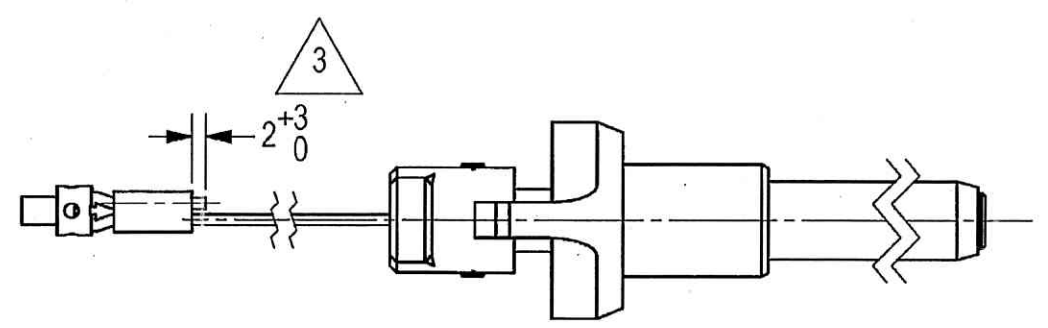
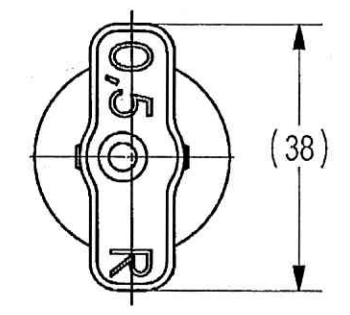
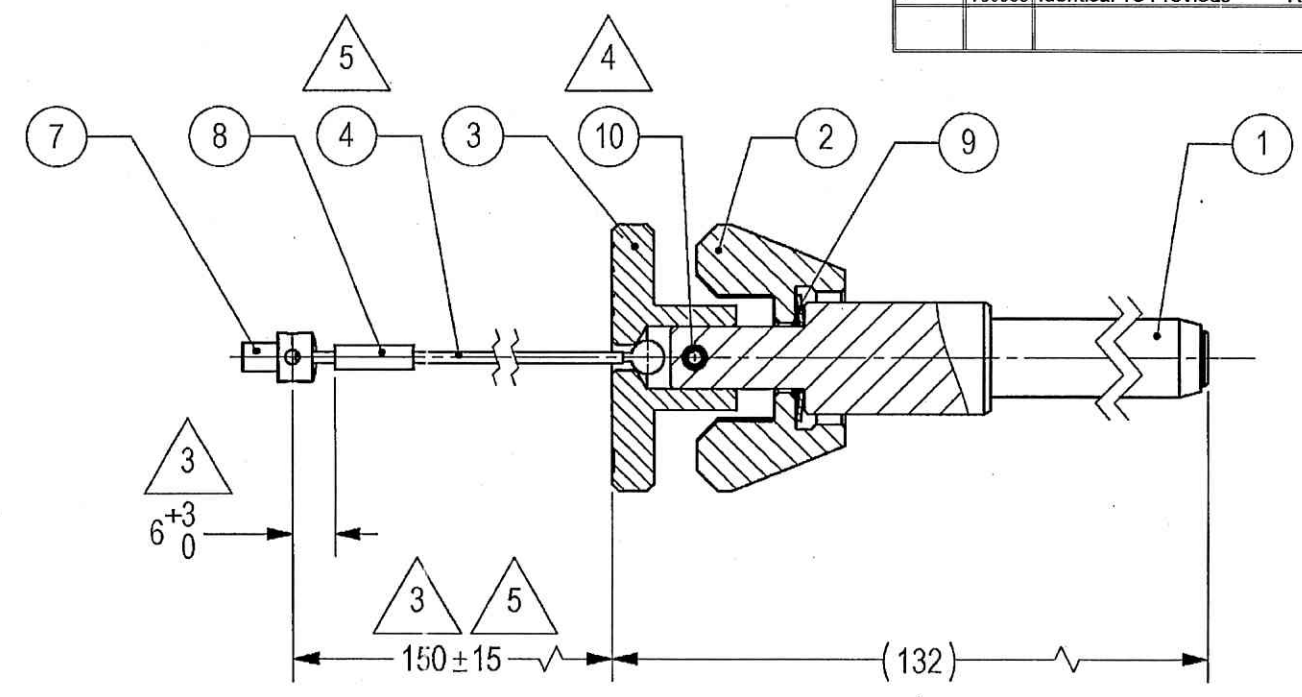
REVISION RECORD

REV	ECO	DESCRIPTION	DATE	APVD
01		2 Rework Freeze	01-Dec-13	
02		Freeze	11-May-14	M. Levin
03		Restricted	26-Aug-14	L. Goldshtein
--	T00065	Identical To Previous Released	09-Apr-18	L. Goldshtein

THIS DOCUMENT AND THE INFORMATION CONTAINED IN IT ARE PROPRIETARY AND CONFIDENTIAL TO OFT. NO PERSON OR ENTITY IS ALLOWED TO COPY, REPRINT, REPRODUCE OR PUBLISH ANY PART OF THIS DOCUMENT, NOR DISCLOSE ITS CONTENTS TO OTHERS, NOR MAKE ANY USE OF IT, NOR ALLOW OR ASSIST OTHERS TO MAKE ANY USE OF IT UNLESS BY THE PRIOR WRITTEN EXPRESS AUTHORIZATION OF OFT AND THEN ONLY TO THE EXTENT AUTHORIZED. COPYRIGHT-OFT.

NOTES:

- INTERPRET THIS DRAWING IAW ASME Y14.100M.
- UNLESS OTHERWISE SPECIFIED THE REQUIREMENTS OF MIL-HDBK-454 APPLY.
- ALL DIMENSIONS ARE FOR REFERENCE ONLY, EXCLUDING DEFINITION.
- LOCKING F/N 10 BY F/N 13.
- ADAPT LENGHT OF F/N 4 ACCORDING TO THIS DRAWING.
- PARENTHETICAL FIGURES ARE FOR REFERENCE ONLY.
- QUALITY ASSURANCE PROVISIONS:
7.1. QUALITY ASSURANCE PROVISIONS FOR THIS ITEM PER RDMQD00012P.
- PACKAGING AND PACKING:
THE FINISHED PART SHALL BE PRESERVED AND PACKAGED IN ACCORDANCE WITH MANUFACTURER'S BEST COMMERCIAL PRACTICE.
- IDENTIFY PER MIL-STD-130 PARA 4.1.B, BY LABELING ITS CONTAINER WITH THE PART NUMBER. CHARACTERS MINIMUM TEXT HEIGHT 1.25 MM.

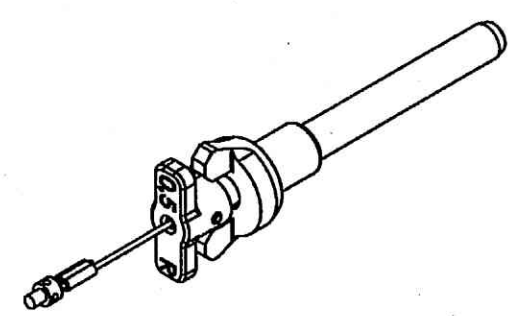


UN CONTROLLED COPY

CERTIFIED CORRECT COPY OF APPROVED DRAWINGS AT THIS DATE 07.01.2021

Design & Drawing Office
Ordnance Factory,
Tiruchirappalli-620011

SEE SEPARATE PARTS LIST



(WEIGHT APPROX.: 0.18 Kg)

UNLESS OTHERWISE SPECIFIED		SIGNATURE	DATE	ORDNANCE FACTORY TIRUCHIRAPPALLI	
DIMENSIONS ARE IN MM PER ASME Y14.5-2009		DRAWN	21/12/20		
TOLERANCES		CHECKED		TITLE	
LINEAR	ANGULAR	HOS/DDO	21/12/20	PIN REAR 1 ASSY	
1st ANGLE PROJECTION		OFFICER/PRODN		SIZE	CAGE CODE
		OFFICER/QC		B	2291A
SURFACE TEXTURE IN Micro INCH		OFFICER/DDO	21/12/20	DWG NO	077902A-00
PROJECT OFFICER				SCALE	1:1
				AUTOMATED DRAWING (SW)	
				SHEET 1 OF 1	
PLM Control 01		EPDM DRAWING REV	01	EPDM MODEL REV	01
		EPDM MODEL STATUS	WIP	EPDM MODEL NAME	077902A-00/PIN_REAR_1_ASSY

2

OFT

ASSEMBLY PARTS LIST

Assembly Parts List For: 077902A-00

Rev: -

Status: Released

Description: PIN REAR 1 ASSY

FN	CMD	PART NUM	ECO	DESCRIPTION	MB	QTY	U/M	REF. DES./REMARKS	MFG. PN / CUSTOMER	LA	LI
1	MP	077916A-00		PIN LOCKING REAR 1	M	1	Each				
2	MP	077911A-00		NUT SPECIAL 2	M	1	Each				
3	MP	077906A-00		HANDLE REAR 1	M	1	Each				
4	MH	077919A-00		WIRE SAFETY	P	1	Each				
7	HO	00083604N		SCREW FILHD SLOT CRES M4X5	P	1	Each		42116-DIN 404-M4X5-A1-50		
8	HO	99941817M		SLEEVE SWAGE CRES 1/16 DIA WIR	P	1	Each		46666-MS51844-62		
9	HO	00122172N		WASHER DISC SPRING CRES 18X9.2	P	1	Each		42198-105593		
10	HO	99931983M		PIN SPRING CRES 3X16MM SL	P	1	Each		42116-DIN 1481-3X16-A2		
13	YR	02010074K		ADHESIVE, THREADLOCKING	P	3.000	CC		43201-OMNIFIT 100M		

UN CONTROLLED COPY
CERTIFIED CORRECT COPY
OF APPROVED DRAWINGS
AT THIS DATE 07-01-2021


Design & Drawing Office
Ordnance Factory,
Tiruchirappalli-620016

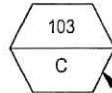
THIS DOCUMENT AND THE INFORMATION CONTAINED IN IT ARE PROPRIETARY AND CONFIDENTIAL TO OFT. NO PERSON OR ENTITY IS ALLOWED TO COPY, REPRINT, REPRODUCE OR PUBLISH ANY PART OF THIS DOCUMENT, NOR DISCLOSE ITS CONTENTS TO OTHERS, NOR MAKE ANY USE OF IT, NOR ALLOW OR ASSIST OTHERS TO MAKE ANY USE OF IT UNLESS BY THE PRIOR WRITTEN EXPRESS AUTHORIZATION OF OFT AND THEN ONLY TO THE EXTENT AUTHORIZED.
COPYRIGHT-OFT.

SHEET REV STATUS
ALL SHEETS ARE THE SAME REVISION

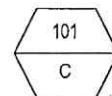
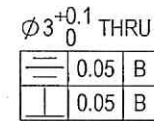
REVISION RECORD				
REV	ECO	DESCRIPTION	DATE	APVD
01		Freeze	01-Dec-13	
02		Restricted	19-Jun-14	L. Goldshtein
03	VYS7/CO	Restricted	16-Sep-14	D. Nave
--	T00065	Identical To Previous Released	09-Apr-18	L. Goldshtein

NOTES:

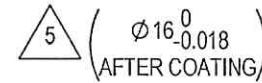
- INTERPRET THIS DRAWING IAW ASME Y14.100M.
- MATERIAL: ALLOY STEEL BAR RND SAE 4130 NORMALIZED PER SAE-AMS-S-6758 OR SAE 4340 NORMALIZED PER SAE-AMS-S-5000.
- UNLESS OTHERWISE SPECIFIED, UNDEFINED MACHINED FILLET RADII SHALL BE 0.2...0.3.
- DEBURR AND REMOVE SHARP EDGES, APPROX. 0.2X45 Deg.
- ALL DIMENSIONS ARE AFTER HEAT TREATMENT AND BEFORE COATING, EXCEPT DEFINED.
- GENERAL TOLERANCES ACCORDING TO ISO 2768-m.
- HEAT TREATMENT TO 35 ± 3 HRC PER AMS 2759/1.
- COATING: A DRY FILM LUBRICATION IN A FLUOROPOLYMER ORGANIC RESIN CLASS 2 COLOR MATTE BLACK TYPE I; 5-13 MICRON THICK PER VS-1-3-1-165 (OR EQUIVALENT).
- QUALITY ASSURANCE PROVISIONS:
 - QUALITY ASSURANCE PROVISIONS FOR THIS ITEM PER RDMQD00012P.
 - MAJOR CHARACTERISTICS NRS 101 TO 103.
- PARENTHEetical FIGURES ARE FOR REFERENCE ONLY.
- PACKAGING AND PACKING: THE FINISHED PART SHALL BE PRESERVED AND PACKAGED IN ACCORDANCE WITH MANUFACTURER'S BEST COMMERCIAL PRACTICE.
- IDENTIFY PER MIL-STD-130 PARA 4.1.B, BY LABELING ITS CONTAINER WITH THE PART NUMBER. CHARACTERS MINIMUM TEXT HEIGHT 1.25 MM.



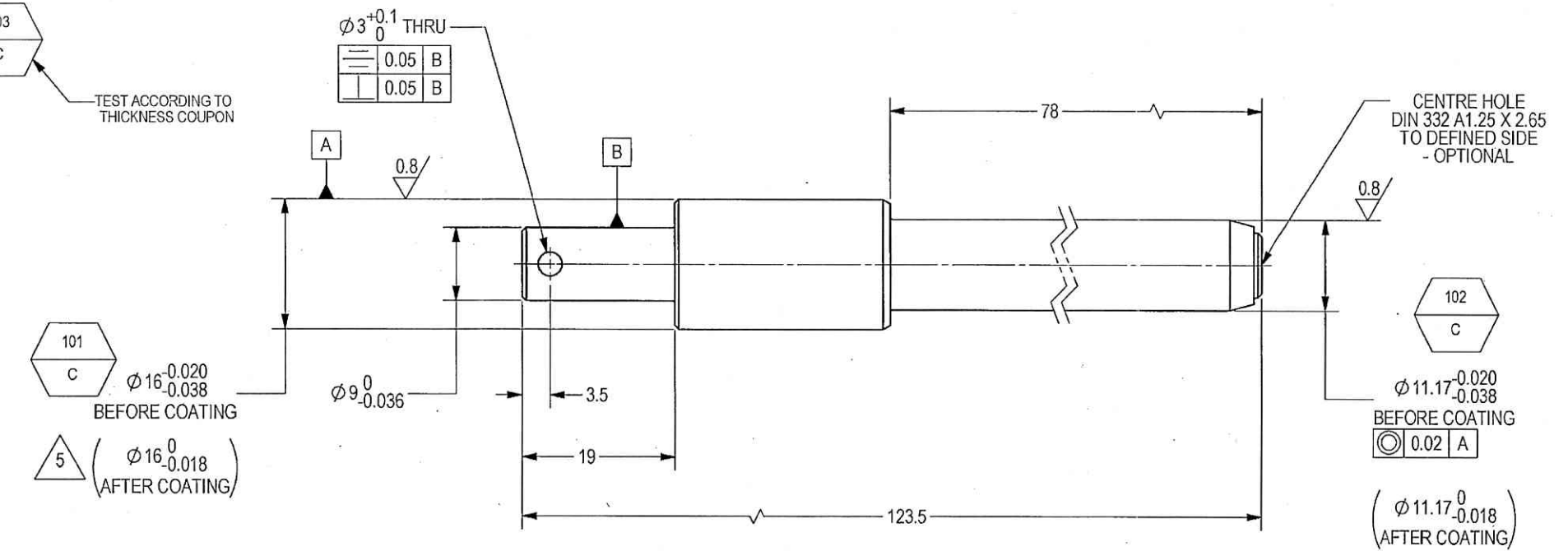
TEST ACCORDING TO THICKNESS COUPON



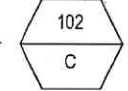
BEFORE COATING



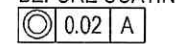
(AFTER COATING)



CENTRE HOLE
DIN 332 A1.25 X 2.65
TO DEFINED SIDE
- OPTIONAL



BEFORE COATING

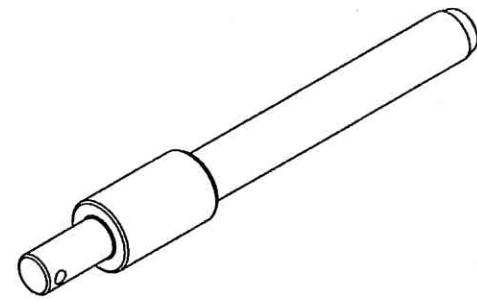


(AFTER COATING)

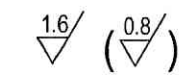


UN CONTROLLED COPY
CERTIFIED CORRECT COPY
OF APPROVED DRAWINGS
AT THIS DATE 07.01.2021

Design & Drawing Office
Ordnance Factory,
Tiruchirappalli-620016



(WEIGHT APPROX.: 0.11 Kg.)



SEE ATTACHED MEDIA

UNLESS OTHERWISE SPECIFIED		SIGNATURE	DATE	ORDNANCE FACTORY TIRUCHIRAPPALLI	
DIMENSIONS ARE IN MM PER ASME Y14.5-2009		DRAWN	2/1/21	FOR: PIN REAR 1 ASSY	
TOLERANCES		CHECKED		TITLE	
LINEAR	ANGULAR	HOS/DDO	2/1/21	PIN LOCKING REAR 1	
SEE NOTE 5	SEE NOTE 5	OFFICER/PRODN		OF: 12.7MM SRCG	
1st ANGLE PROJECTION		OFFICER/OC		SIZE	CAGE CODE
SURFACE TEXTURE IN Micro Meter		OFFICER/DDO	2/1/21	C	2291A
				DWG NO	077916A-00
				SCALE	2:1
				AUTOMATED DRAWING (SW)	SHEET 1 OF 1
				PROJECT	647_Dual_Weapon_MK-II-MAG
				PONE/KOOL	077916A-00 PIN_LOCKING_REAR_1
				STATUS	WIP

PLM Control

2

DWG NO 077911A-00

SH 1

1

SHEET REV RECORD

ALL SHEETS ARE THE SAME REVISION

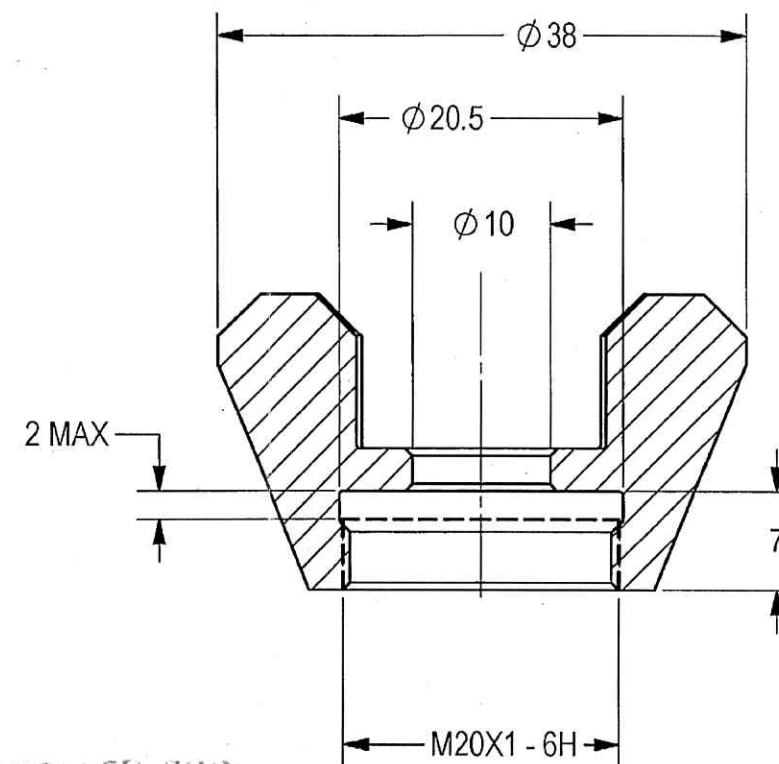
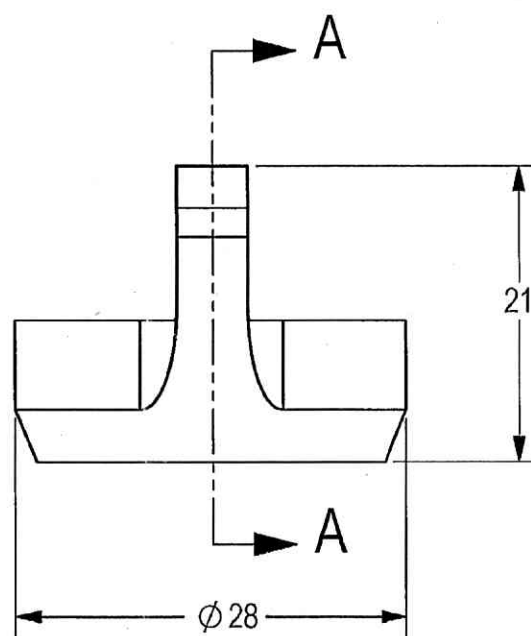
REVISION RECORD

REV	ECO	DESCRIPTION	DATE	APVD
01		Freeze	01-Dec-13	
02		Restricted	28-May-14	L. Goldshtein
03	VY57/00	Restricted	16-Sep-14	D. Nave
--	T00065	Identical To Previous Released	09-Apr-18	L. Goldshtein

THIS DOCUMENT AND THE INFORMATION CONTAINED IN IT ARE PROPRIETARY AND CONFIDENTIAL TO OFT. NO PERSON OR ENTITY IS ALLOWED TO COPY, REPRINT, REPRODUCE OR PUBLISH ANY PART OF THIS DOCUMENT, NOR DISCLOSE ITS CONTENTS TO OTHERS, NOR MAKE ANY USE OF IT, NOR ALLOW OR ASSIST OTHERS TO MAKE ANY USE OF IT UNLESS BY THE PRIOR WRITTEN EXPRESS AUTHORIZATION OF OFT AND THEN ONLY TO THE EXTENT AUTHORIZED.
COPYRIGHT-OFT.

NOTES:

- INTERPRET THIS DRAWING IAW ASME Y14.100M.
- MATERIAL: ALLOY STEEL BAR RND SAE 4130 NORMALIZED PER SAE-AMS-S-6758 OR SAE 4340 NORMALIZED PER SAE-AMS-S-5000.
- UNLESS OTHERWISE SPECIFIED, UNDEFINED MACHINED FILLET RADII SHALL BE 0.2...0.3.
- DEBURR AND REMOVE SHARP EDGES, APPROX. 0.2X45 Deg.
- GENERAL TOLERANCES ACCORDING TO ISO 2768-m.
- HEAT TREATMENT TO 35 ± 3 HRC PER AMS 2759/1.
- COATING: A DRY FILM LUBRICATION IN A FLUOROPOLYMER ORGANIC RESIN CLASS 2 COLOR MATTE BLACK TYPE I; 5-13 MICRON THICK PER VS-1-3-1-165 (OR EQUIVALENT).
- QUALITY ASSURANCE PROVISIONS:
8.1. QUALITY ASSURANCE PROVISIONS FOR THIS ITEM PER RDMQD00012P.
- PARENTHETICAL FIGURES ARE FOR REFERENCE ONLY.
- PACKAGING AND PACKING:
THE FINISHED PART SHALL BE PRESERVED AND PACKAGED IN ACCORDANCE WITH MANUFACTURER'S BEST COMMERCIAL PRACTICE.
- IDENTIFY PER MIL-STD-130 PARA 4.1.B, BY LABELING ITS CONTAINER WITH THE PART NUMBER. CHARACTERS MINIMUM TEXT HEIGHT 1.25 MM.



UN CONTROLLED COPY

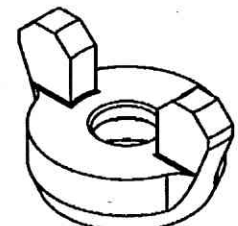
CERTIFIED CORRECT COPY OF APPROVED DRAWINGS AT THIS DATE 02.01.2021

Design & Drawing Office
Ordnance Factory,
Tiruchirappalli-620016.

SECTION A-A

SEE ATTACHED MEDIA

3.2



(WEIGHT APPROX.: 0.035 Kg.)

UNLESS OTHERWISE SPECIFIED		SIGNATURE	DATE	ORDNANCE FACTORY TIRUCHIRAPPALLI	
DIMENSIONS ARE IN MM PER ASME Y14.5M-1994		DRAWN	21/12		
TOLERANCES		CHECKED		TITLE	
LINEAR	ANGULAR	HOS/DDO	21/12	NUT SPECIAL 2	
SEE NOTE 5	SEE NOTR 5	OFFICER/PRODN		SIZE	CAGE CODE
1st ANGLE PROJECTION		OFFICER/QC		B	2291A
SURFACE TEXTURE IN Micro Meter		OFFICER/DDO	Dinesh 4/1/21	DWG NO	077911A-00
PROJECT OFFICER				SCALE	2:1
				AUTOMATED DRAWING (SW)	
				SHEET	1 OF 1

PLM Control

1

2

THIS DOCUMENT AND THE INFORMATION CONTAINED IN IT ARE PROPRIETARY AND CONFIDENTIAL TO OFT. NO PERSON OR ENTITY IS ALLOWED TO COPY, REPRINT, REPRODUCE OR PUBLISH ANY PART OF THIS DOCUMENT, NOR DISCLOSE ITS CONTENTS TO OTHERS, NOR MAKE ANY USE OF IT, NOR ALLOW OR ASSIST OTHERS TO MAKE ANY USE OF IT UNLESS BY THE PRIOR WRITTEN EXPRESS AUTHORIZATION OF OFT AND THEN ONLY TO THE EXTENT AUTHORIZED. COPYRIGHT-OFT.

SHEET REV RECORD

ALL SHEETS ARE THE SAME REVISION

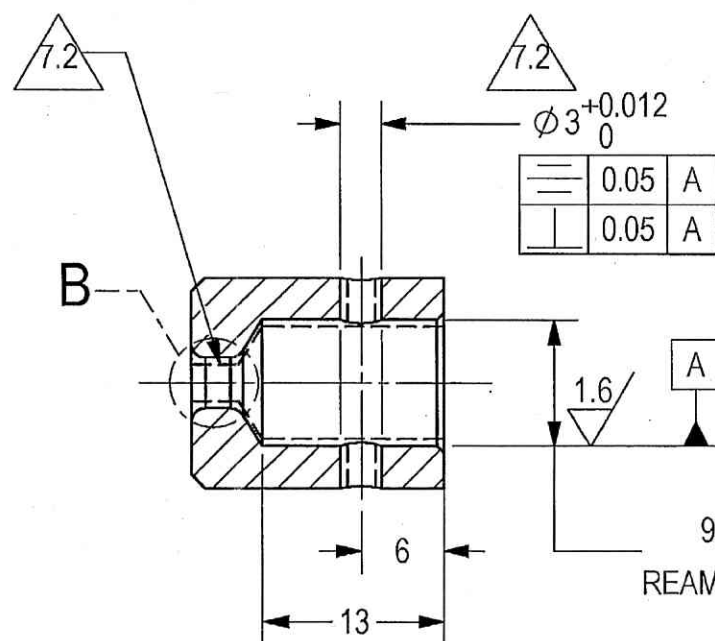
REVISION RECORD

REV	ECO	DESCRIPTION	DATE	APVD
01		2 Rework Freeze	01-Dec-13	
02		Freeze	18-May-14	M. Levin
03		Restricted	23-Jul-14	L. Goldshtein
--	T00065	Identical To Previous Released	09-Apr-18	L. Goldshtein

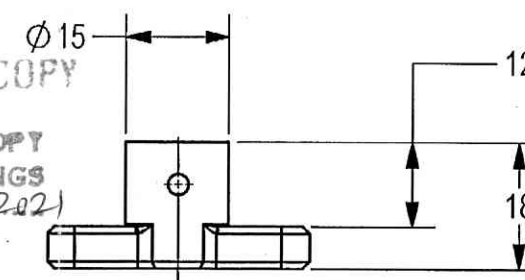
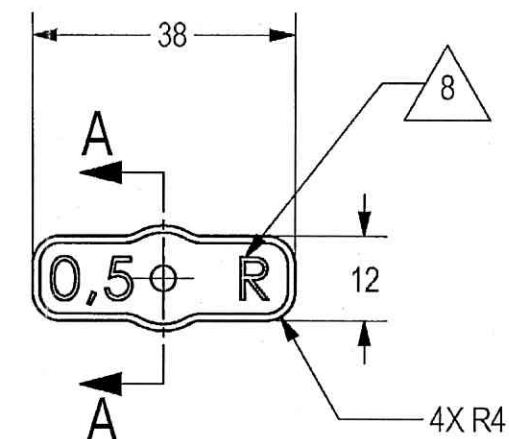
NOTES:

- INTERPRET THIS DRAWING IAW ASME Y14.100M.
- MATERIAL: CRES ROD 303 PER ASTM-A-582.
- UNLESS OTHERWISE SPECIFIED, UNDEFINED MACHINED FILLET RADII SHALL BE 0.2...0.3.
- DEBURR AND REMOVE SHARP EDGES, APPROX. 0.2X45 Deg.
- ALL DIMENSIONS ARE BEFORE COATING.
- GENERAL TOLERANCES ACCORDING TO ISO 2768-m.
- FINISH:
 - A DRY FILM LUBRICATION IN A FLUOROPOLYMER ORGANIC RESIN CLASS 2 COLOR MATTE BLACK TYPE I; 5-13 MICRON THICK PER VS-1-3-1-165 (OR EQUIVALENT).
- AREA AND HOLE MARKED BY "-----" PROTECT AFTER PHOSPHATE.
- ENGRAVE CHARACTERS 0.3 MM DEEP USE ATTACHED DXF FILE. FILL WITH EPOXY INK PER A-A-56032 TYPE I, COLOR WHITE #17875 PER FED-STD-595.
- QUALITY ASSURANCE PROVISIONS:
 - QUALITY ASSURANCE PROVISIONS FOR THIS ITEM PER RDMQD00012P.
- PARENTHEICAL FIGURES ARE FOR REFERENCE ONLY.
- PACKAGING AND PACKING:

THE FINISHED PART SHALL BE PRESERVED AND PACKAGED IN ACCORDANCE WITH MANUFACTURER'S BEST COMMERCIAL PRACTICE.
- IDENTIFY PER MIL-STD-130 PARA 4.1.B, BY LABELING ITS CONTAINER WITH THE PART NUMBER. CHARACTERS MINIMUM TEXT HEIGHT 1.25 MM.



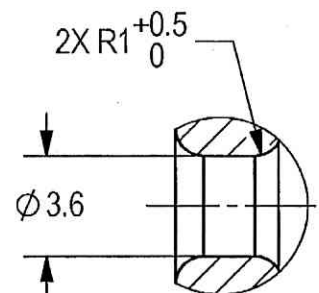
SECTION A-A SCALE 2:1



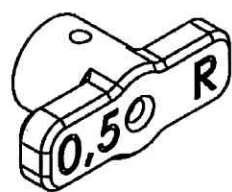
UN CONTROLLED COPY
CERTIFIED CORRECT COPY OF APPROVED DRAWINGS AT THIS DATE 02.01.2021

Design & Drawing Office
Ordnance Factory,
Tiruchirappalli-620018

SEE ATTACHED MEDIA



DETAIL B SCALE 4:1



(WEIGHT : 0.042 Kg APPROX.)

UNLESS OTHERWISE SPECIFIED		SIGNATURE	DATE	ORDNANCE FACTORY TIRUCHIRAPPALLI	
DIMENSIONS ARE IN MM PER ASME Y14.5M -1994		DRAWN	2/1/21	TITLE HANDLE REAR 1	
TOLERANCES LINEAR SEE NOTE 6 ANGULAR SEE NOTE 6		CHECKED			
1st ANGLE PROJECTION		HOS/DDO	2/1/21	SIZE	CAGE CODE
SURFACE TEXTURE IN Micro Meter		OFFICER/PRODN		B	2291A
PROJECT OFFICER		OFFICER/QC		DWG NO	077906A-00
PLM Control		OFFICER/DDO	2/1/21	SCALE	1:1
				AUTOMATED DRAWING (SW)	1
					SHEET 1 OF 1

2

DWG NO 077919A-00

SH 1

1

THIS DOCUMENT AND THE INFORMATION CONTAINED IN IT ARE PROPRIETARY AND CONFIDENTIAL TO OFT. NO PERSON OR ENTITY IS ALLOWED TO COPY, REPRINT, REPRODUCE OR PUBLISH ANY PART OF THIS DOCUMENT, NOR DISCLOSE ITS CONTENTS TO OTHERS, NOR MAKE ANY USE OF IT, NOR ALLOW OR ASSIST OTHERS TO MAKE ANY USE OF IT UNLESS BY THE PRIOR WRITTEN EXPRESS AUTHORIZATION OF OFT AND THEN ONLY TO THE EXTENT AUTHORIZED. COPYRIGHT-OFT.

SHEET REV RECORD
ALL SHEETS ARE THE SAME REVISION

REVISION RECORD

REV	ECO	DESCRIPTION	DATE	APVD
01		Freeze	01-Dec-13	
02		Restricted	30-Jul-14	L. Goldshtein
--		Identical To Previous Released	09-Apr-18	L. Goldshtein

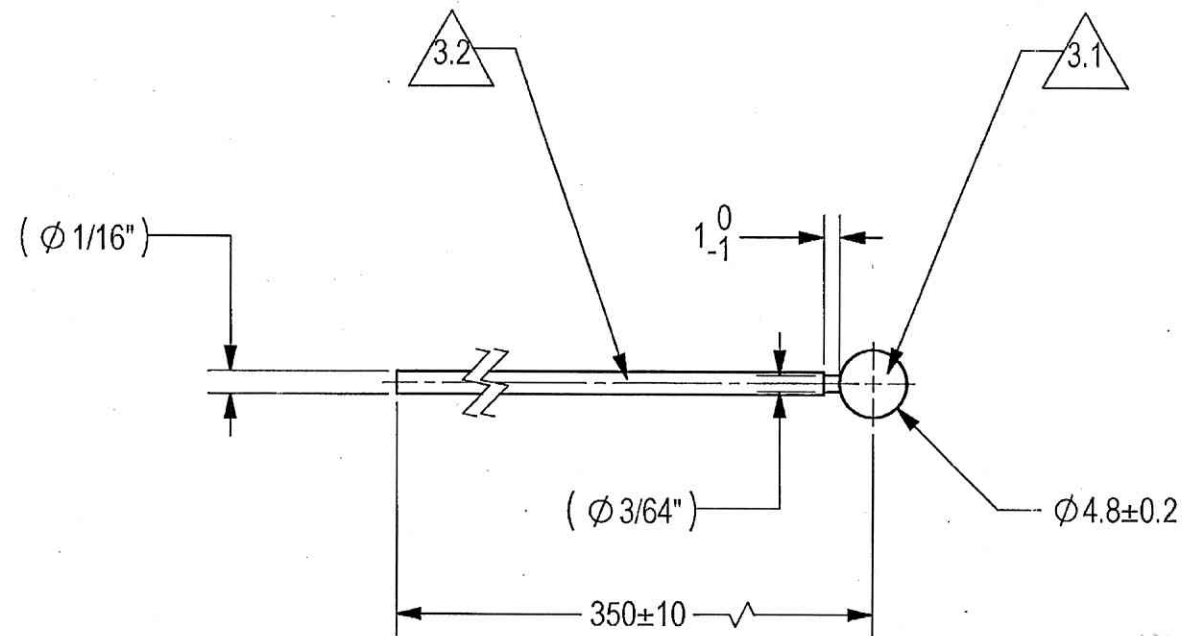
NOTES:

1. INTERPRET THIS DRAWING IAW ASME Y14.100M.
2. MINIMUM WIRE ASSY BREAKING STRENGTH 20 Kg.
3. MATERIAL OF PARTS:

3.1 BALL - STAINLESS STEEL BY SUPPLIER.

3.2 WIRE - WIRE ROPE 3/64 CRES NYL JKT 1/16 M83420/4-001.

4. PARENTHEICAL FIGURES ARE FOR REFERENCE ONLY.
5. PACKAGING AND PACKING:
THE FINISHED PART SHALL BE PRESERVED AND PACKAGED IN ACCORDANCE WITH MANUFACTURER'S COMMERCIAL PRACTICE.
6. IDENTIFY PER MIL-STD-130 PARA 4.1.B, BY LABELING ITS CONTAINER WITH THE PART NUMBER. CHARACTERS MINIMUM TEXT HEIGHT 1.25 MM.
7. APPROVED SOURCE OF SUPPLY:
OTTO PERL.
P.O. BOX 33770, HAATZMAUT ROAD, 128, HAIFA, ISRAEL.
TEL. 04-8520135, FAX. 04-8529667.
VENDOR NO. 1010315.

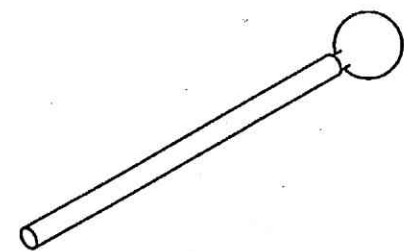


UN CONTROLLED COPY

CERTIFIED CORRECT COPY OF APPROVED DRAWINGS AT THIS DATE 07.01.2021

[Signature]
Design & Drawing Office
Ordnance Factory,
Tiruchirappalli-620016

SOURCE CONTROL DRAWING



(WEIGHT APPROX.: 0.01 Kg)

UNLESS OTHERWISE SPECIFIED		SIGNATURE	DATE	ORDNANCE FACTORY TIRUCHIRAPPALLI	
DIMENSIONS ARE IN MM PER ASME Y14.5-2009		DRAWN	2/1/21		
TOLERANCES LINEAR ANGULAR		CHECKED		TITLE	
		HOS/DDO	2/1/21	WIRE SAFETY	
1st ANGLE PROJECTION		OFFICER/PRODN		SIZE	CAGE CODE
		OFFICER/QC		B	2291A
SURFACE TEXTURE IN MicroMeter		OFFICER/DDO	2/1/21	DWG NO	077919A-00
				SCALE	2:1
PROJECT OFFICER <i>[Signature]</i>				AUTOMATED DRAWING (SW)	
				SHEET 1 OF 1	
PLM Control 01		EPDM DRAWING REV	EPDM MODEL REV	EPDM MODEL STATUS	EPDM MODEL NAME
				WIP	077919A-00 WIRE SAFETY

2