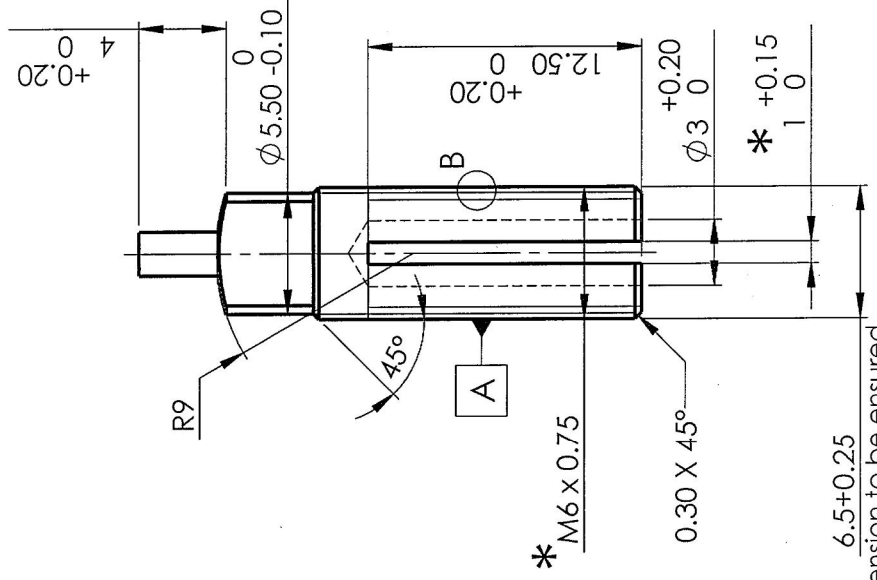
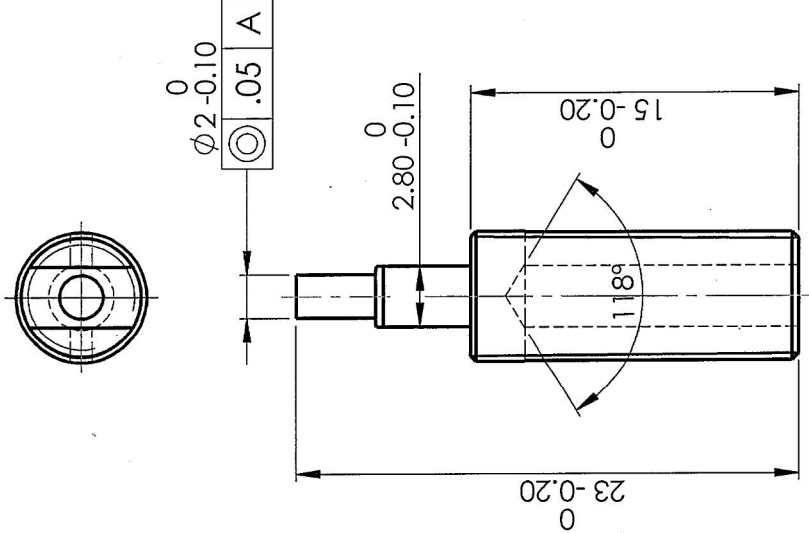


DIMENSIONS ARE IN mm.  
 UNTOLERATED DIMNS. AS PER IS : 2102 (MED)  
 MARK DRAWING No.



\* Dimension prior to Hardening

Dimension to be ensured  
 by spreading the end  
 before Hardening

**Material :**  
 Steel  
 BS:970 Pt.1 1983 Sec.3 Gr.709 M40 (or) EN19  
 Alt. Matl.  
 BS:970 Pt.1 1983 Sec.3 Gr.708 M40 (or) EN19A


**Hardness:** 42 - 47 HRC

**Protective Finish :**  
 Accelerated Phosphating to Specn. 0465-01-1994  
 Class II Oil Finish

Blunt Sharp Edges to 0.4 R

**Pilot sample to be get approved  
 before bulk production**

Enlarged view at - B

SIGNATURE & DATE.	TRACED	SCALE	NTS
	DRAWN	FOR: Barrel Assy	QPG
CHECKED	OF: TRICHY ASSAULT RIFLE	1	Weight (g)
HOS/D&DO	DES.REF.NO. K-1022 / K-1022-EXP		2.90
OFFICER/ PRDN.	DRG. No.: TAR-K-1022*		SHEETS: 1
DIV.OFFICER/ D&DO	 ORDNANCE FACTORY TIRUCHIRAPPALLI-16.		SHEET No.: 1
APPROVED ON: 05/06/2023			
AMENDMENTS	SIG. & DATE		

DA.No.19/2023  
 (Sl.No.:1)  
 Dt.:05/06/2023