

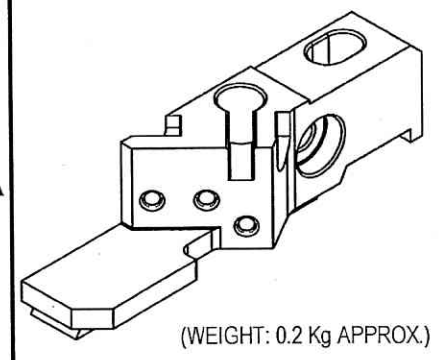
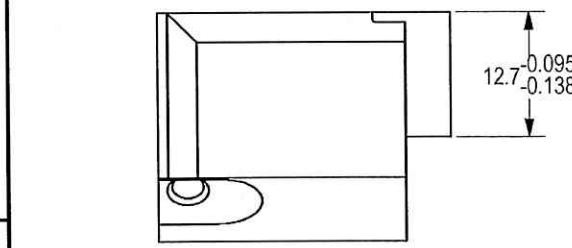
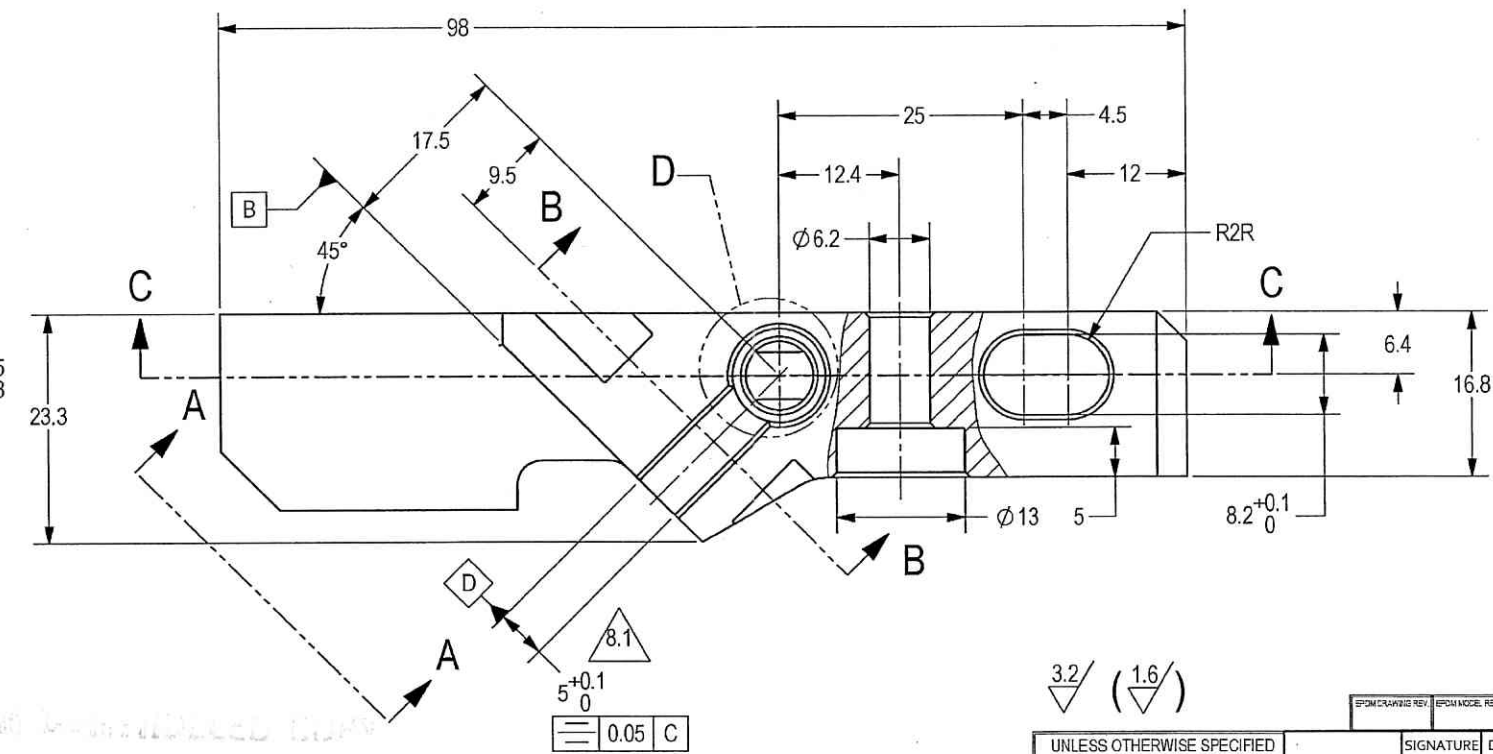
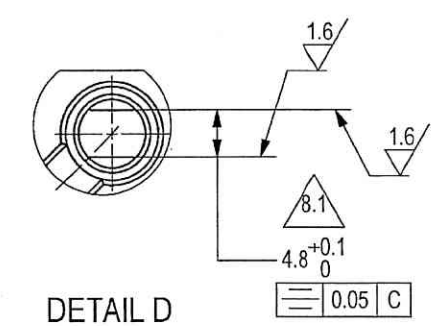
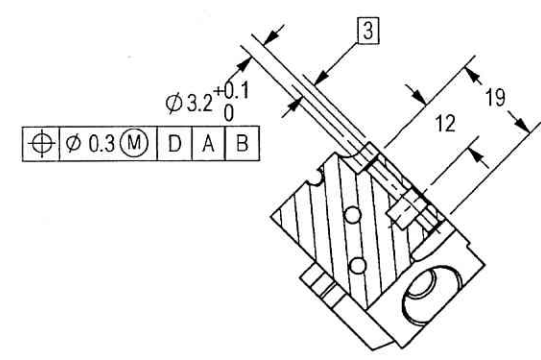
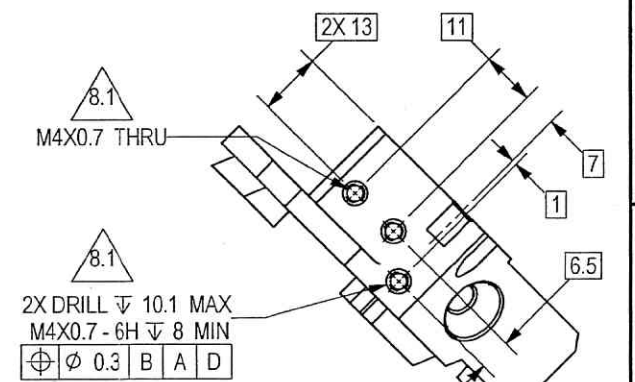
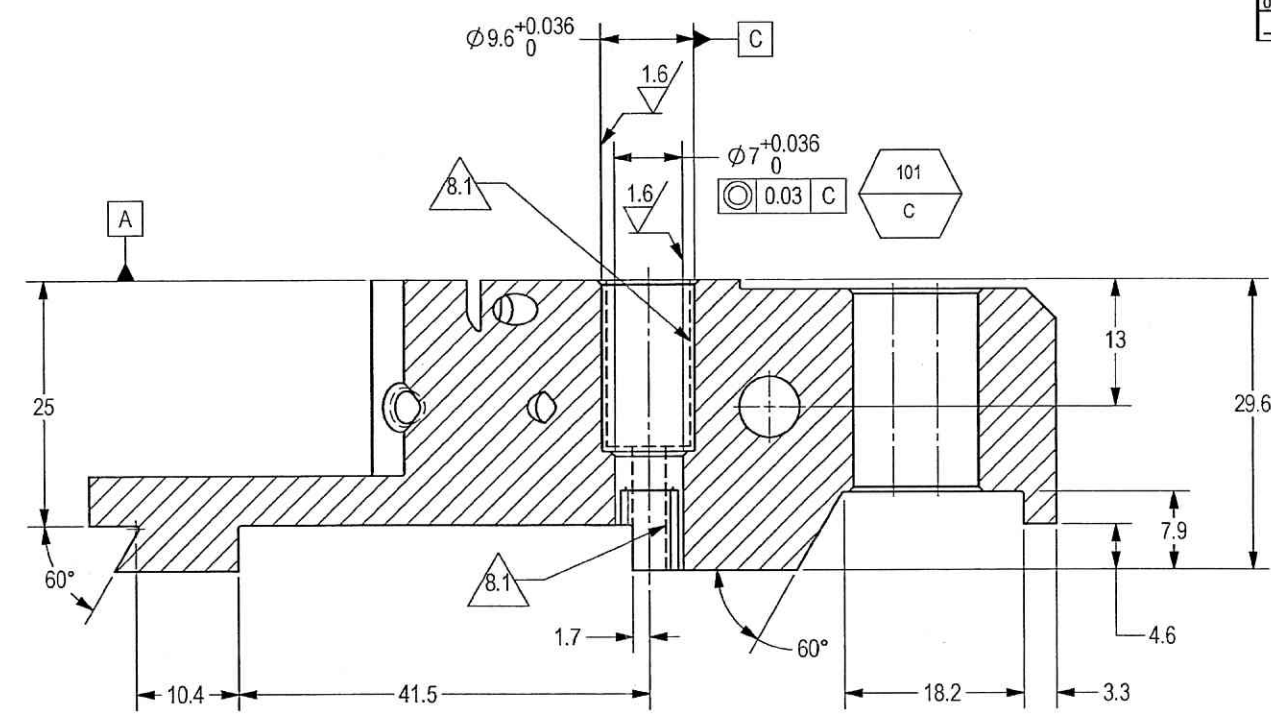
7490316402, 42044

THIS DOCUMENT AND THE INFORMATION CONTAINED IN IT ARE PROPRIETARY AND CONFIDENTIAL TO OFT. NO PERSON OR ENTITY IS ALLOWED TO COPY, REPRINT, REPRODUCE OR PUBLISH ANY PART OF THIS DOCUMENT, NOR DISCLOSE ITS CONTENTS TO OTHERS, NOR MAKE ANY USE OF IT, NOR ALLOW OR ASSIST OTHERS TO MAKE ANY USE OF IT UNLESS BY THE PRIOR WRITTEN EXPRESS AUTHORIZATION OF OFT AND THEN ONLY TO THE EXTENT AUTHORIZED.
COPYRIGHT-OFT.

SHEET REV STATUS
ALL SHEETS ARE THE SAME REVISION

REVISION RECORD				
REV	ECO	DESCRIPTION	DATE	APVD
02		Freeze	09-Nov-12	
03		Freeze	28-Nov-13	
04		Freeze	11-May-14	M. Levin
05		Restricted	16-Jul-14	L. Goldshtein
-	T00066	Identical To Previous	09-Apr-18	L. Goldshtein

- NOTES:
- INTERPRET THIS DRAWING IAW ASME Y14.100M.
 - MATERIAL: ALLOY STEEL PLATE SAE 4130 NORMALIZED PER SAE-AMS-6345 OR SAE 4340 NORMALIZED PER AMS-6359.
 - UNLESS OTHERWISE SPECIFIED, UNDEFINED MACHINED FILLET RADII SHALL BE 0.2..0.3.
 - DEBURR AND REMOVE SHARP EDGES, APPROX. 0.2X45 Deg.
 - ALL DIMENSIONS ARE AFTER HEAT TREATMENT AND BEFORE COATING.
 - GENERAL TOLERANCES ACCORDING TO ISO 2768-m.
 - HEAT TREATMENT TO 35±3 HRC PER AMS 2759/1.
 - COATING: A DRY FILM LUBRICATION IN A FLUOROPOLYMER ORGANIC RESIN CLASS 2 COLOR MATTE BLACK TYPE I; 5-13 MICRON THICK PER VS-1-3-1-165 (OR EQUIVALENT).
- 8.1 PROTECT SURFACES MARKED BY "8.1" AND THREAD AFTER PHOSPHATE.
- QUALITY ASSURANCE PROVISIONS:
 - QUALITY ASSURANCE PROVISIONS FOR THIS ITEM PER RDMQD00012P.
 - MAJOR CHARACTERISTICS NRS 101.
 - PARENTHEICAL FIGURES ARE FOR REFERENCE ONLY.
 - PACKAGING AND PACKING: THE FINISHED PART SHALL BE PRESERVED AND PACKAGED IN ACCORDANCE WITH MANUFACTURER'S BEST COMMERCIAL PRACTICE.
 - IDENTIFY PER MIL-STD-130 PARA 4.1.B, BY LABELING ITS CONTAINER WITH THE PART NUMBER. CHARACTERS MINIMUM TEXT HEIGHT 1.25 MM.



CERTIFIED CORRECT COPY OF APPROVED DRAWING AT THIS DATE 26.11.2020

UNLESS OTHERWISE SPECIFIED		SIGNATURE		DATE	
DIMENSIONS ARE IN MM PER ASME Y14.5M - 1994		DRAWN		11/17/20	
TOLERANCES		CHECKED			
LINEAR	ANGULAR	HOS/DDO		26/11/20	
SEE NOTE 6	SEE NOTE 6	OFFICER/PRODN			
1st ANGLE PROJECTION		OFFICER/OC			
SURFACE TEXTURE IN Micro METER		OFFICER/DDO			

ORDNANCE FACTORY TIRUCHIRAPPALLI			
TITLE		FOR: BLOCK INSTALLATION	
BASE BLOCK		OF: 12.7MM SRCG	
SIZE	CAGE CODE	DWG NO	
C	2291A	065286A-00	
SCALE	AUTOMATED DRAWING (SW)	SHEET 1 OF 1	
2:1			

DWG NO 065286A-00

A