



LELAND

This drawing is strictly private and confidential. It is the exclusive property of ASHOK LEYLAND Ltd., and must not be used, copied or reproduced in part or whole without the company's written permission.

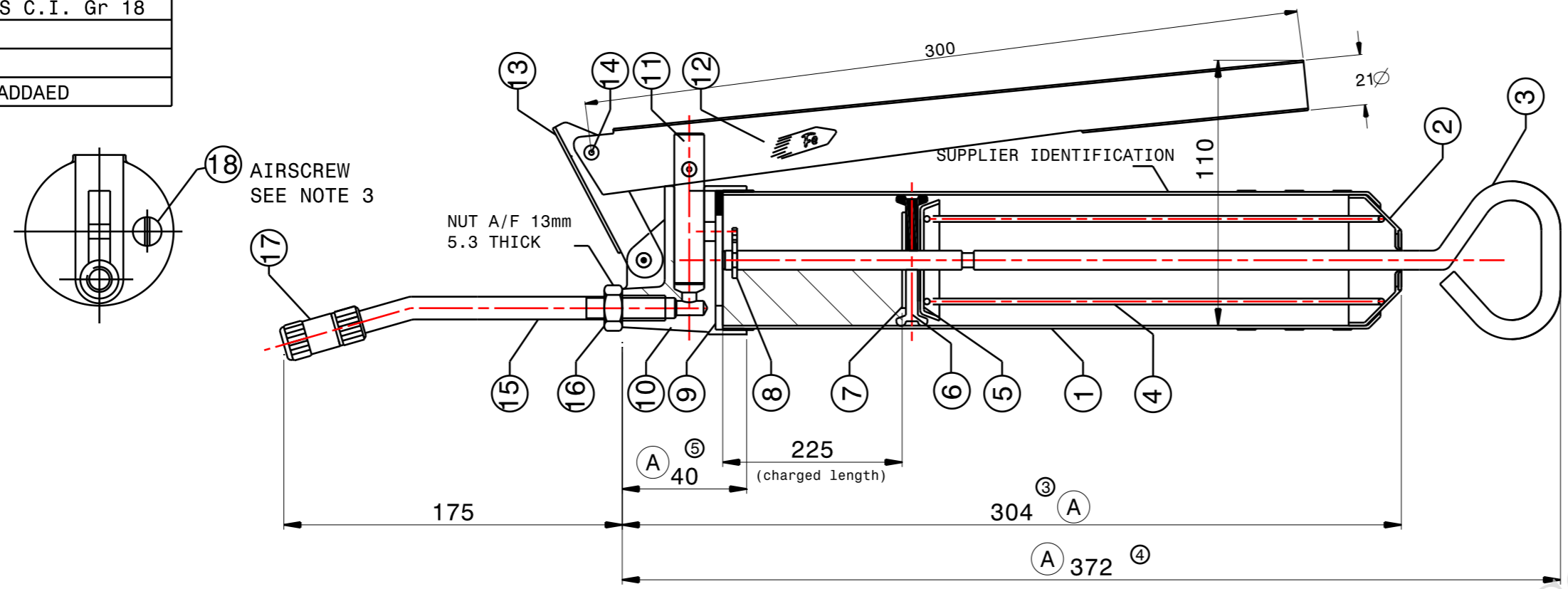
ASHOK LEYLAND LTD. TECHNICAL CENTRE VELLIVOLCHAVADI



LELAND

ALTERATIONS A	
①	MATL WAS NITRILE CD
②	MATL WAS C.I. Gr 18
③	WAS 324
④	WAS 392
⑤	DIM 40 ADDAED

al.pt.no:  
**F4735900 A**



**NOTE:**

1. THE GREASE GUN IS TESTED AS PER IS: 7794
2. FOR PERFORMANCE AND ENDURANCE, THE VOLUME OF GREASE EXTRUDED PER STROKE AT AN OPERATING PRESSURE OF 300 kgf/sq.cm IS 0.63 cc
3. UNSCREW AIRSCREW TO RELEASE BEFORE PUMPING
4. LUBRICATE PLUNGER AND INSIDE BARREL WITH OIL BEFORE USE.
5. KEEP PULLROD ALWAYS INSIDE THE BARREL. IT IS TO BE PULLED OUT ONLY DURING FILLING OF GREASE.

**IDENTIFICATION:**

1. SUPPLIER IDENTIFICATION MARK ON HANDLE - LOGO 'FE'.
2. SUPPLIER IDENTIFICATION MARK AND CODE NO. ON BARREL NEAR KNURLING.
3. AL PART NO ON BARREL NEAR KNURLING.
4. MONTH AND YEAR OF MANUFACTURE ON BARREL NEAR KNURLING.

OPERATING PRESSURE kgf/sq.cm	DISCHARGE PER STROKE cc
0	1.00
100	0.97
200	0.87
300	0.64

ALL DIMENSIONS ARE IN MM

S. NO	ITEM	DESCRIPTION	MATERIAL	QTY	REMARKS
18	V3030123	AIRSCREW	M.S	1	FIXED TO THE PUMP
17	V3030124	ADAPTOR	ASSY	1	FOR STD GREASE NIPPLE
16	V3030117	NUT 3/8"UNF	M.S	1	ZINC PLATED
15	V3030116	NOZZLE 3/8"UNF	3/8" F.B.W TUBE	1	ZINC PLATED
14	V3030115	RIVET	M.S	3	ZINC PLATED
13	V3030114	SMALL LEVER	1.22 CRCA	1	ZINC PLATED
12	V3030113	HANDLE	1.22 CRCA	1	ZINC PLATED
11	V3030112	PLUNGER	12.57 M.S	1	GROUND & POLISHED
10	V3030111	PUMP	AL M24	1	PAINTED GREY H.T
9	V3030110	SEAL INGRING	P.P	1	
8	V3030109	COTTER PIN	M.S	1	ZINC PLATED
7	V3030108	WASHER	M.S	1	ZINC PLATED
6	V3030107	CUP RUBBER	SOFT P.V.C.	1	GREASE OIL RESISTANT
5	V3030106	CUP WASHER	1.22mm CRCA SHEET	1	ZINC PLATED
4	V3030105	SPRING	CL II STEEL	1	OILED
3	V3030104	PULLROD	M.S 8mm	1	ZINC PLATED
2	V3030103	CUP	1.22mm CRCA SHEET	1	ZINC PLATED
1	V3030102	BARREL	57 X 1.25	1	ERW TUBE ZINC PLATED

DRN: ARVIND  
CHD: NIVAS  
APPD: S.R.S  
MATERIAL: -  
PART NO: **F4735900 A**

**LEVER TYPE GREASEGUN**  
CAPACITY 500cc  
FERN EQUIP (P) LTD.  
K-10 IND.ESTATE, CHENNAI-600 058.

SUPPLIER PART NO.	AL PART NO	SAMPLE	TRIAL	PRODUCTION	SAMPLE	TRIAL	SAMPLE	TRIAL	PRODUCTION
V3030101A	F4735900		T02385 06.04.06	ER-DIN:3905 08.10.09	1000 Nos		V.MURUGAN 06.04.06	V.MURUGAN 08.10.09	
		ASHOK LEYLAND APPROVAL NO. AND DATE			QUANTITY		APPROVED BY / DATE		

NOTE : SUPPLIER DRG THIRD ANGLE PROJECTION

<p>Ⓢ - CRITICAL Ⓢ - SAFETY Ⓢ - IMPORTANT. THIS DRAWING CONTAINS SAFETY CHARACTERISTICS</p> <p>UNLESS OTHERWISE SPECIFIED</p> <p>TOLERANCES REFER IS:2102; MEDIUM FOR MACHINING AND COARSE FOR FABRICATION</p> <p>SURFACE PROTECTION FABRICATED COMPONENTS TO BE DEGREASED, DESCALED. APPLY ZINC PHOSPHATE, APPLY EPOXY PRIMER AND APPLY BLACK ENAMEL TO MEET 300 HRS OF SALT SPRAY LIFE WHEN TESTED AS PER ASTM B117 (UNDER PELLICULAR CORROSION &lt;= 2mm. NO BLISTERING IS ALLOWED.) MACHINED SURFACE TO BE APPLIED WITH RUST PREVENTIVE OIL TO IS:1154</p> <p>SURFACE FINISH AS PER IS:3073(CLA VALUE)</p>	<p>METRIC SCREW THREADS SHALL CONFORM TO THE LIMITS AND TOLERANCES SPECIFIED IN THE CURRENT IS:4218 CLASS 6g EXTERNAL OR 5H INTERNAL</p> <p>SHARP EDGES TO BE REMOVED DIMENSIONS ARE IN MM DO NOT SCALE DRAWING</p>
---	---

SPECIAL INSTRUCTIONS/NOTE:

SL No	PART NO:	DESCRIPTION	SIZE	MATERIAL	QTY
<b>BILL OF MATERIALS</b>					
APPEARANCE ITEM		ER-DIN	DATE		
FINISHED WEIGHT (APPROX)		REF PART NO:	---		
SCALE		SUPERSEDES	---		
NTS		SPEC NO:	---		

ALTERATIONS	ER-DIN DATE	GRADE	SUFFIX
MATL WAS NITRILE CD, MATL WAS C.I. GR 18, DIMNS 304 WAS 324, DIMNS 372 WAS 392, DIMS 40 ADDAED. TABLE ADDED INLINE WITH TRIAL APPROVAL DETAILS. RVK/VMG	ER-DIN:3905		A

AL PLM VAULT  
REVISION:A | DATE:9-10-2009 | STATUS:RELEASE  
STAGE:III | ER-DIN NO/DATE: ER-DIN-0003905 / 9-10-2009  
ALTERED BY:rsvijay.aie | CHECKED:vmg.aie  
MED APPROVAL:-NA- | APPROVED:vmg.aie  
DIGITALLY SIGNED. PHYSICAL SIGNATURE NOT REQUIRED

DRAWN/ DATE	CHECKED/ DATE	MED APPROVAL/ DATE	APPROVED/ DATE	STDS APP/ DATE
RVK 03.10.09	VMG 06.10.09	---	VMG	---
MATERIAL				
HEAT TREATMENT				
REMARKS				
FOR ALL TRUCKS AND BUS MODELS				
DESCRIPTION				
LEVER TYPE GREASE GUN (500 CC)				
PART NO.	<b>F 4 7 3 5 9 0 0</b>			<b>A</b>
SHEET No .....1..... OF .....1.....				<b>A2</b>