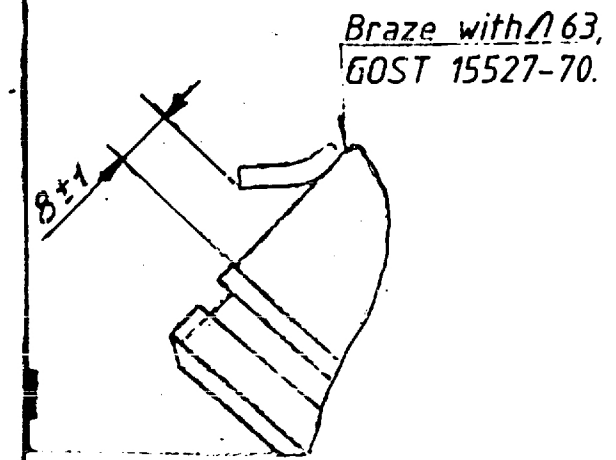
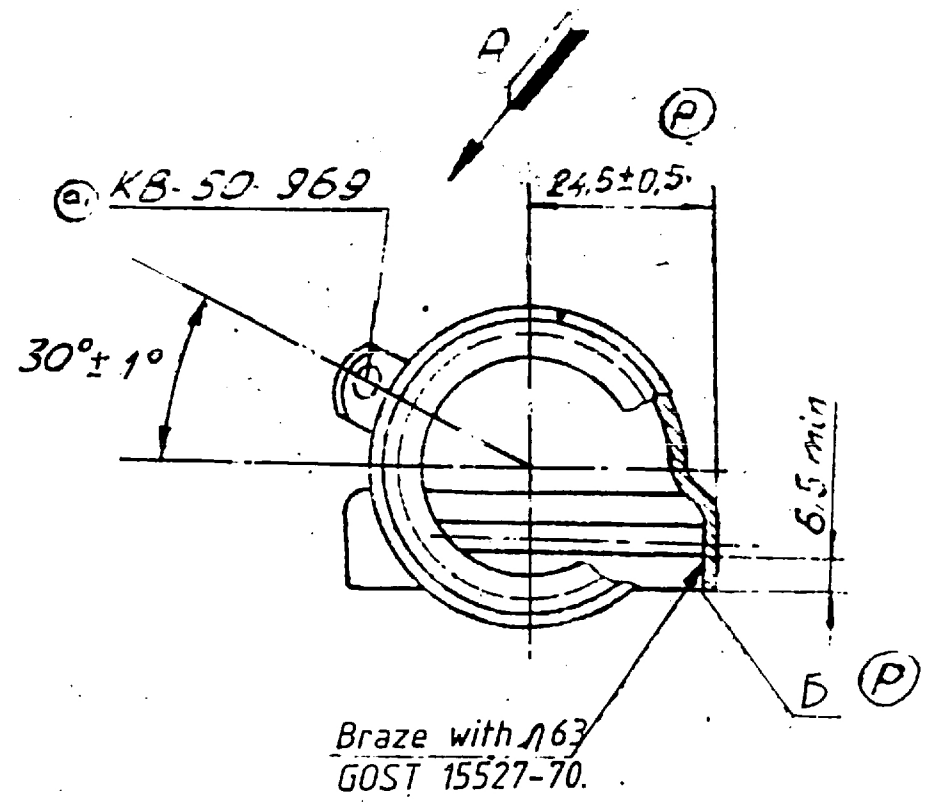
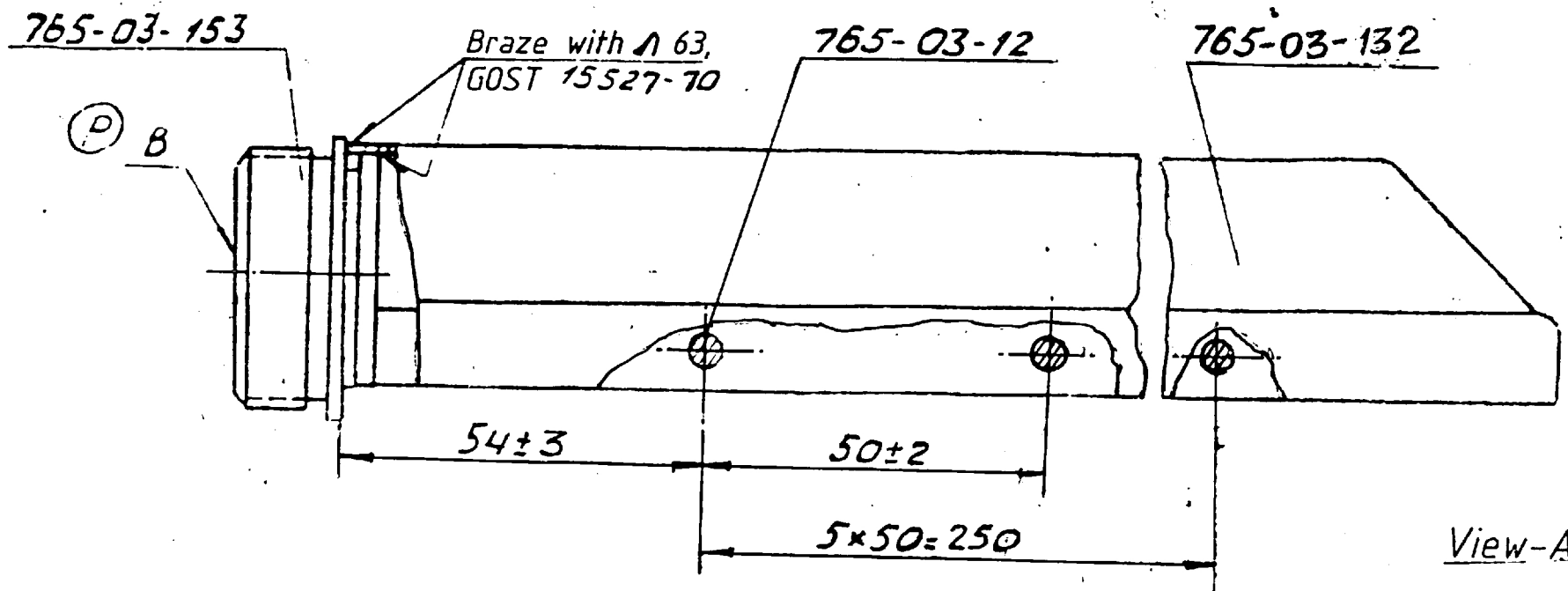


765-03-08177



- 1). Warpage ^{of} walls should not exceed 2mm.
- 2). Test header for leak proofness with water at a pressure of 1 kg/cm², leakage and sweating are not allowed. It is allowed to carryout test by supplying air in water bath at a pressure of 0.3kg/cm² or pouring kerosene.
Air leakage or appearance of traces of kerosene on chalk coated seams under test is not allowed.
- 4). Coating: ГОП, 4ноццы 18-2, ГОП. 4ноц-40 or ГОП. 4ноццы 30-2, GOST 21930-76.
- 5). Non-squareness of surface B to surface B̄ should not exceed 1 mm over the length of 36mm.

		Solder А 63		
4	765-03-153	Flange	1	
3	KB-50-969	Lug for sealing	1	
2	765-03-132	Header	1	
1	765-03-12	Spacer	6	
REF.	Description	Designation	Qty	Remarks

USED ON: 765-03-08161

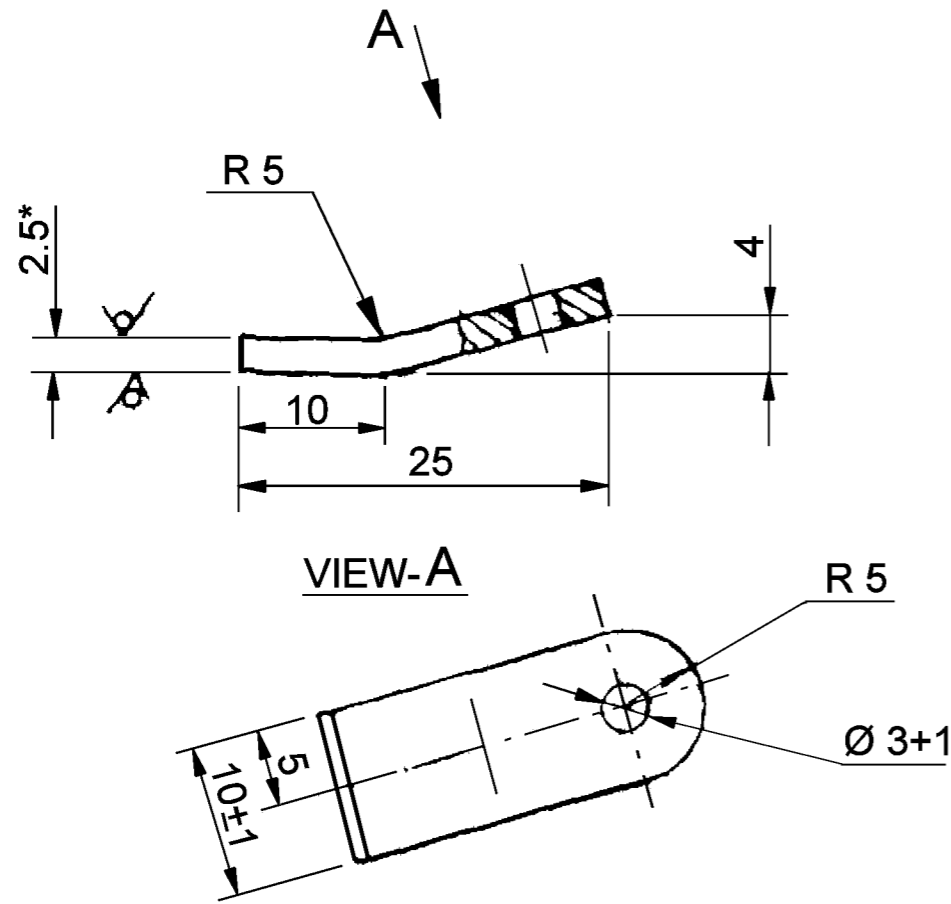
APPROVED	<i>[Signature]</i> M VASU	765-03-08177	
CHECKED	<i>[Signature]</i>	HEADER	WEIGHT SCALE
CONTROLLERATE OF INSPECTION (ICV)			0.467 1:1
		SHT SHTS	
		27 of 92	

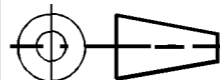
TECHNICAL CONDITIONS

1. ALTERNATE MATERIAL IS Cm2cn, Cm5cn GOST 380-71. AND STEEL 08nc, 10kn, 15, 20, 25 AND 30 GOST 1050-74.
2. UNSPECIFIED LIMIT DEVIATIONS OF DIMENSIONS ARE $\pm 0.5\text{mm}$.
3. * DIMENSION IS GIVEN FOR REFERENCE.

EQ. MATERIAL:- 1) GRADE Fe330 TO IS 1079-88 OR
 2) COLD ROLLED STEEL STRIP GRADE-D(1/2H) TO IS: 4030-73
 OR 3) GRADE Fe330 TO IS:5986-92

Ⓐ EQ. MATERIAL: CRS TO IS: 513-86 GRADE 'D'.



NEAREST EQ. MATERIAL		00849-ICV 16-01-2001	Ⓐ	EQ. MATERIAL ADDED.
SHEET 25, GOST 19903-74 4-n-10, GSOT16523-70		00825-ICV 31-10-2000		DRAWING REVISED AND RETRACED.
ORGL MATERIAL:-		DC(I)No. & DATE	ISSUE	AMENDMENTS
ALL SHARF EDGES & CORNERS TO BE ROUNDED OFF	ALL THREADS TO CONFORM TO SPECIFICATION	STAMP OR ETCH, PART No. MANUFACTURER's NAME & YEAR OF MFR.		
DRG. NOT TO BE SCALED	TOLERANCE ON DIMENSIONS UNLESS OTHERWISE SPECIFIED	USED ON: 765-03-Sb154		
SCALE: 2:1	DATE : 30-10-2000			
DRN. [Signature]	WT :- (Kg) 0.006	KB-50-969		
TCD. [Signature]				
CHD [Signature]		LUG FOR SEALING		DS CAT No.
APPD [Signature]				

**CONTROLLERATE OF QUALITY ASSURANCE
(INFANTRY COMBAT VEHICLES)**

ALL DIMENSIONS ARE IN mm.