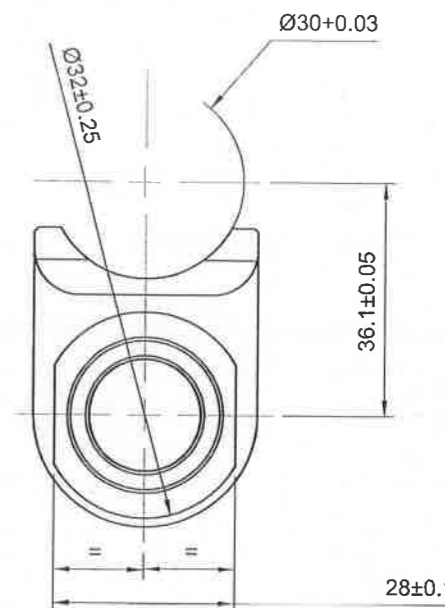
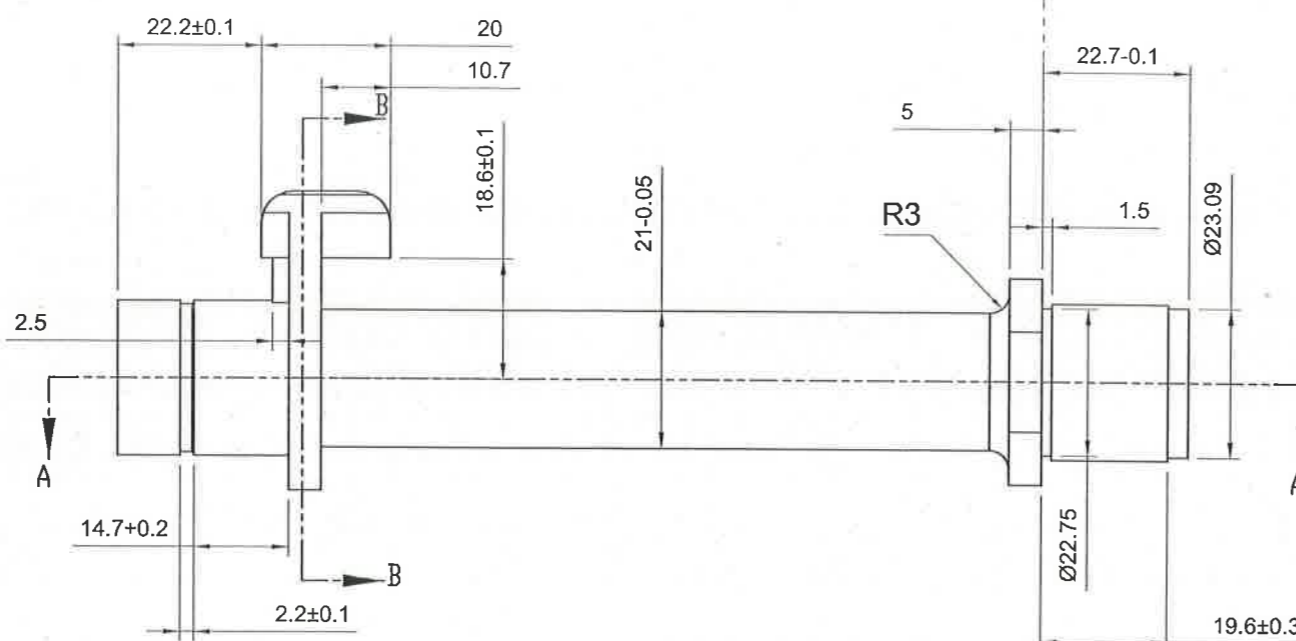
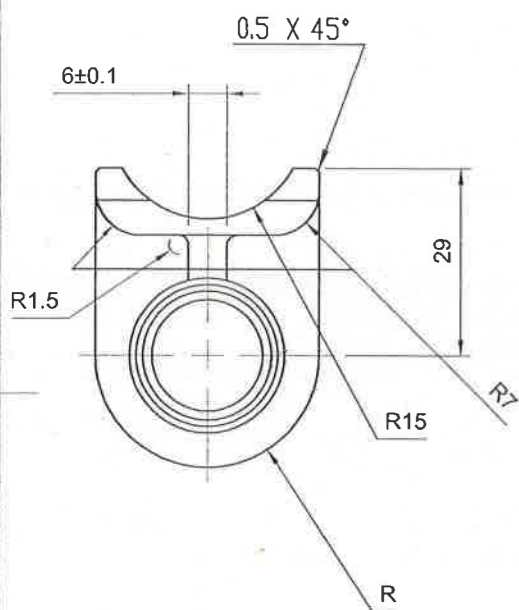
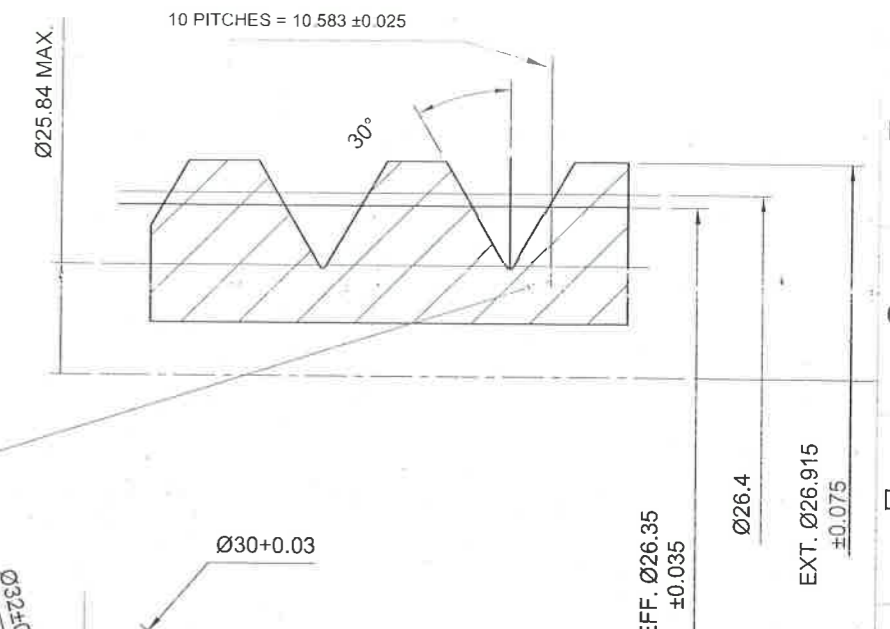
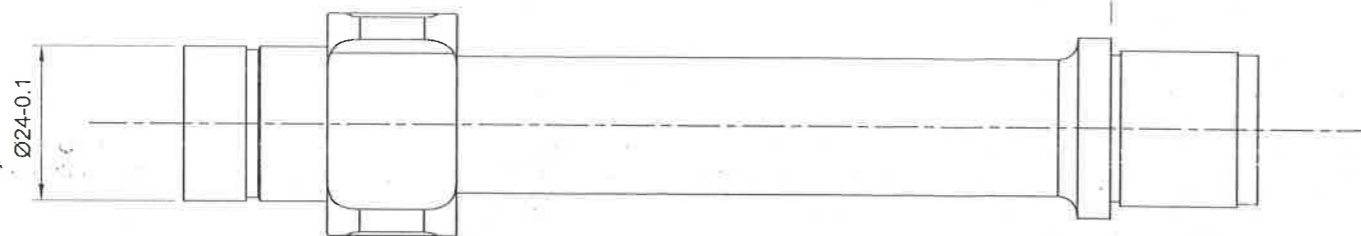
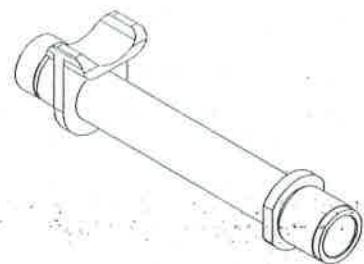
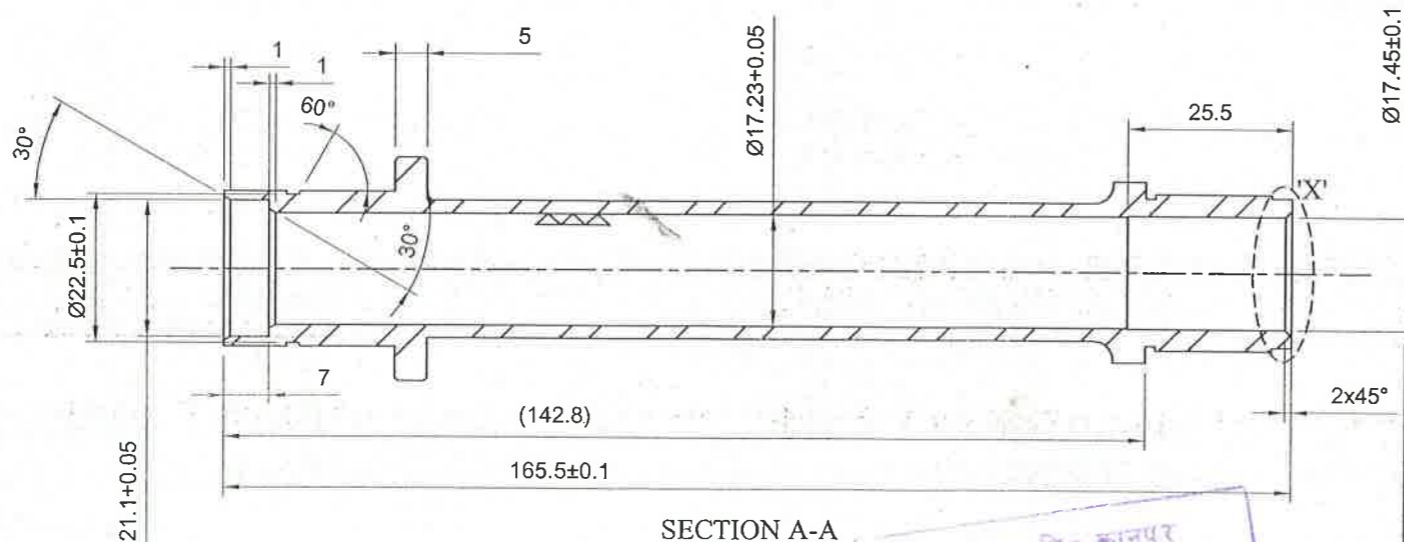
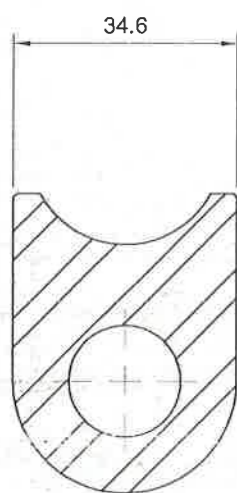


(PROVISIONAL)



For General Manager
Date: 11/12/18
VETTED BY
S.A.F., Kanpur
कृते महाप्रबन्धक



MATERIAL :- BS 970 PT.1 : 1993 Gr. 060 A 62 OR 080 A 62 OR 060 A67 OR 080 A 67 OR 817 M40 'T' CONDITION

HEAT TREATMENT :-

NORMALIZED LOCAL INDUCTION HEATING AT 'X' OR QUENCHED AND TEMPERED AT 250-300°C

PROTECTIVE FINISH :- PHOSPHATE TO SPECN. JSS. 0465 :01-1994 CLASS-II (ACCELERATED), OIL FINISH.

ALL DIMENSIONS ARE IN mm.
IMPORTANT DIMNS ARE MARKED THUS ⊕ (±0.003)
INFORMATION MARKED THUS † TO BE MARKED ON
SURFACE MARKED 'G' TO BE GROUND

LMG 7.62X51mm BELT FED
CYLINDER GAS

SCALE
1:1

SMALL ARMS FACTORY
KANPUR

DRAWN TRACED CHKD.

DATE 19-07-2018

APPROVED

WM/DDO

DRG. NO. SK-5809

Ref. Drg. No.-ARDE/SK/108/010

SHEET NO. 1-1

कृते महाप्रबन्धक
S.A.F., Kanpur
द्वारा विधिभित
VETTED BY
For General Manager
Date: 11/12/18