

DRAWING CONVERSIONS CONFORM TO ANSI/AIAA-5-D17-1991

GEN TOL: REFER SHEET No-1

DRG No. 1320

ADDRDE/1142 (a)

SHEET 2 OF 18

PACK COVER(BODY)
1-OFF

DRG No. CHD 88
TRD COMP

O/C DRG. 9/30
PASSED

PRO OFFR
DH

APPROVED

DESIGN AUTHORITY

DIRECTOR

SCALE - 1:5
DIM'S ARE IN mm

R. DATE AUTHORITY

BRIEF RECORD

ZONE CD

PACK COVER
(PARACHUTE TACTICAL ASSAULT-MAIN)

ADDRDE/AGRA
DRG No. ADDRDE/1142 (a)
SHEET 2 OF 18

DRD/150/93

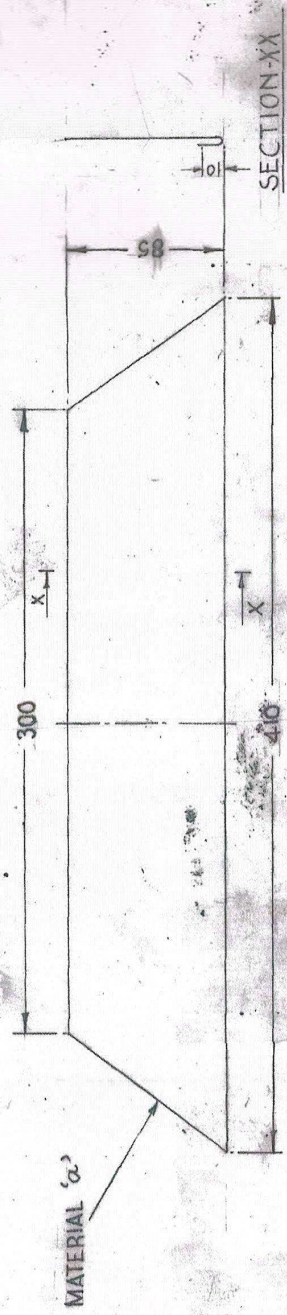
2

6 5 4 3 2 1

DRG. No. 1142 (a)
 ADDRDE/1142 (a)
 SHEET 3 OF 18

GEN. TOL. - REFER SHEET No-1.

DRAWING CONVENTIONS CONFORM TO ANSI/ASME Y14.1-1975



STRENGTHENING PIECE
 2-OFF

| | | | |
|-------------------|-----------------|-------------------|-----------------|
| DRG. No. 1142 (a) | ADDRDE/1142 (a) | DRG. No. 1142 (a) | ADDRDE/1142 (a) |
| SHEET 3 OF 18 | | SHEET 3 OF 18 | |
| DRG. No. 1142 (a) | ADDRDE/1142 (a) | DRG. No. 1142 (a) | ADDRDE/1142 (a) |
| SHEET 3 OF 18 | | SHEET 3 OF 18 | |

| | | | |
|-------------------|-----------------|-------------------|-----------------|
| DRG. No. 1142 (a) | ADDRDE/1142 (a) | DRG. No. 1142 (a) | ADDRDE/1142 (a) |
| SHEET 3 OF 18 | | SHEET 3 OF 18 | |
| DRG. No. 1142 (a) | ADDRDE/1142 (a) | DRG. No. 1142 (a) | ADDRDE/1142 (a) |
| SHEET 3 OF 18 | | SHEET 3 OF 18 | |

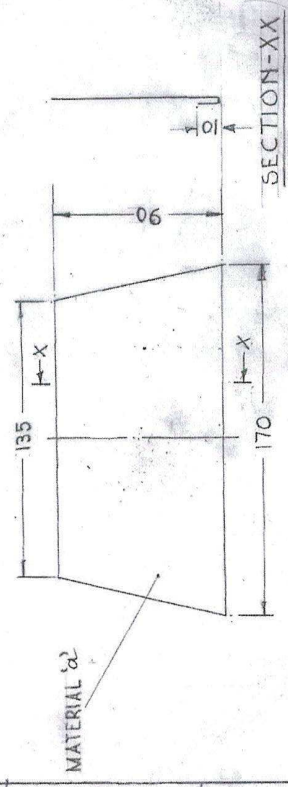
| | | | |
|-------------------|-----------------|-------------------|-----------------|
| DRG. No. 1142 (a) | ADDRDE/1142 (a) | DRG. No. 1142 (a) | ADDRDE/1142 (a) |
| SHEET 3 OF 18 | | SHEET 3 OF 18 | |
| DRG. No. 1142 (a) | ADDRDE/1142 (a) | DRG. No. 1142 (a) | ADDRDE/1142 (a) |
| SHEET 3 OF 18 | | SHEET 3 OF 18 | |

PACK COVER
 (PARACHUTE TACTICAL ASSAULT-MAIN)

DRD/150/93

1
2
3
4
DRAWING CONVEKSIONS CONFORM TO ANSI/MMA-5017-1991
GEN TDL. REFER SHEET No-1
DRG No.
ADDRDE/1142 (a)
SHEET 4 OF 18

③



STRENGTHENING PIECE
1-OFF

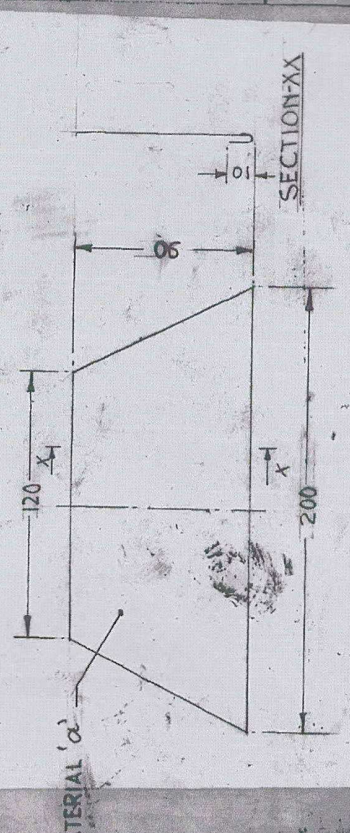
| | | | | | |
|-------|---------|---------------------------------|---------------------|------------------------|------------------------|
| 1 | 24-5-96 | ADDRDE/PAS/204/4 D.T. 8.5-96 | MATERIAL 'a' TURNED | ZONE (D) | DRG. 0.1% O.V.C |
| R No. | DATE | AUTHORITY | BRIEF RECORD | DRG. 0.1% PRO. OFF. | DRG. 0.1% PRO. OFF. |
| | | | DRN DCOMP TBD | PASSED | DH |
| | | | SCALE: 1: 1.2 | APPROVED | DIRECTOR |
| | | | DIMENSIONS: IN. mm | DESIGN AUTHORITY | ADDRDE, AGRA |
| | | | | DRG No. (a) | 10119 |
| | | | | ADDRDE/1142 (a) | 10119 |
| | | | | SHEET 4 OF 18 | |

PACK COVER
(PARACHUTE TACTICAL ASSAULT-MIN)

4 3 2
DRD/150/93

4 3 2 1
 DRAWING CONVERSIONS CONFORM TO ANSI/AIAA-5-017-1997
 GEN TOL. - REFER SHEET No-1

DRG. No.
 ADDRDE/1142 (9)



STRENGTHENING PIECE
 1-OFF

| | | | | | |
|---|---------|-------------------|--------------------------------------|-----------|-------------|
| 1 | 24-5-96 | ADDRDE/PA-5/224/4 | MATERIAL 'a' TURNED | ZONE CD | 107 |
| R | No. | DT: 8-5-96 | BRIEF RECORD | DRG 0 1/2 | DRG 0 1/2 B |
| | | | DRN APR CHD SR | PRO. OFF | PRO. OFF |
| | | | TRD | PASSED | |
| | | | SCALE: 1:2 | | |
| | | | DIMENSIONS IN mm | | |

APPROVED *[Signature]*
 DIRECTOR

DESIGN AUTHORITY
 ADDRDE, AGRA

DRG. No.
 ADDRDE/1142 (9)

SHEET 5 OF 18

PACK COVER
 (PARACHUTE TACTICAL ASSAULT-MAIN)

4 3 2 1
 DRD/150/93

DRAWING CONVERSIONS CONFORM TO ANSI/ASME Y14.1-1974

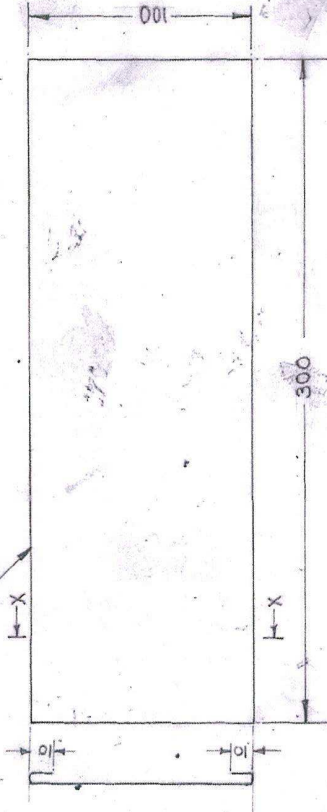
GEN TOL - REFER SHEET No - 1

SHEET 6 OF 18

DRG. No.
ADRDE/1142(a)

5

MATERIAL 'cc'



SECTION XX

STRENGTHENING PIECE

1-OFF

| | | | | | | | |
|-------|---------|-----------------|----------------------|----------|-----------|----------|-----------|
| 1 | 24-5-96 | ADRDE/PAS/224/4 | MATERIAL 'cc' TURNED | DRG. No. | DRG. 01/2 | PRO. OFF | DRG. 01/2 |
| R No. | DATE | AUTHORITY | BRIEF RECORD | ZONE CD | PASSED | APPROVED | DIRECTOR |
| | | | | | CHD SR | COMP | DH |
| | | | | | TRD | | |

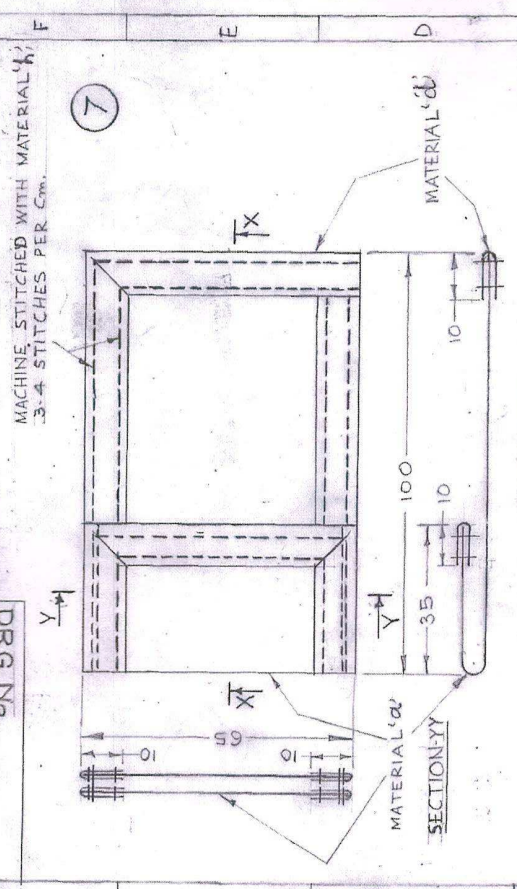
SCALE: 1:2
DIMENSIONS IN mm

DESIGN AUTHORITY
ADRDE, AGRA

PACK COVER
(PARACHUTE TACTICAL ASSAULT - MAIN)

DRG. No.
ADRDE/1142 (a) (91)
SHEET 6 OF 18

4 3 2 1
 DRAWING CONVENTIONS CONFORM TO AINS/AIAA 5-97
 1997
 SHEET 8 OF 18
 TOL: NEN
 DRG No
 ADDRDE/1142(a)

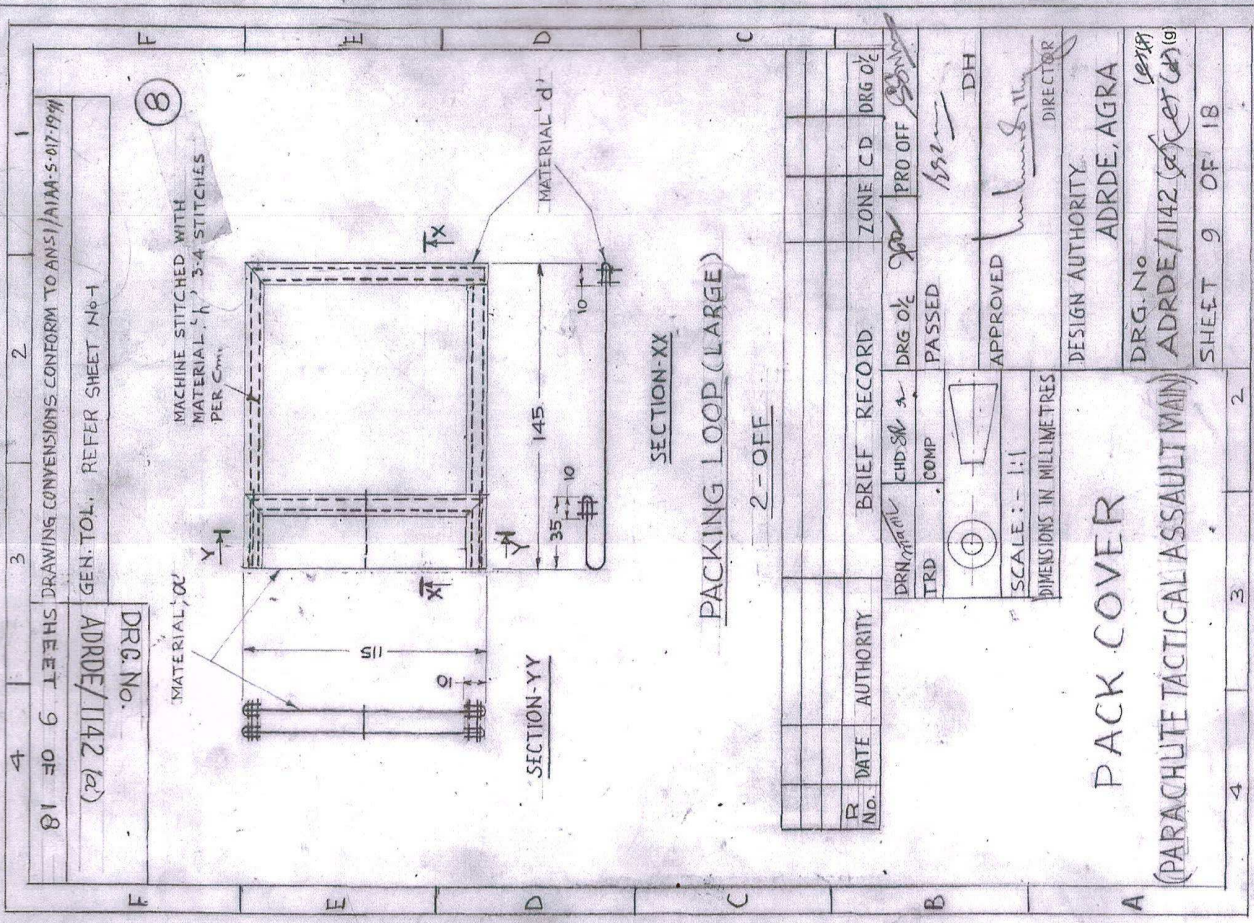


SECTION-XX
 PACKING LOOP (SMALL)
 2-OFF

| R No. | DATE | AUTHORITY | BRIEF RECORD | ZONE | CD | DRG OF |
|-------|------|-----------|----------------|----------------|------------------|---------------------------|
| | | | DRN <i>DRN</i> | CHKD <i>DR</i> | DRG OK <i>DR</i> | PRO OFF <i>DR</i> |
| | | | TRD | COMP | PASSED | |
| | | | | | APPROVED | DH |
| | | | | | | DIRECTOR |
| | | | | | | DESIGN AUTHORITY |
| | | | | | | ADRDE, AGRA |
| | | | | | | DRG. No. |
| | | | | | | ADDRDE/1142 (a) <i>DR</i> |
| | | | | | | SHEET 8 OF 18 |

PACK COVER
 (PARACHUTE TACTICAL ASSAULT MAIN)

4 3 2 1
 DRD/150/93



4 3 2 1

DRAWING CONVERSIONS CONFORM TO ANSI/AIAA-5-07-1994

SHEET 9 OF 18

GEN. TOL. REFER SHEET No 1

DRG. No. ADDRDE/1142 (2)

(8)

PACKING LOOP (LARGE)

2-OFF

| DRG. No. | DATE | AUTHORITY | BRIEF RECORD | ZONE CD | DRG. No. |
|----------|------|-----------|------------------|---------|----------|
| | | | CHKD BY a | | |
| | | | COMP | | |
| | | | TRD | | |
| | | | PASSED | | |
| | | | APPROVED | | |
| | | | DIRECTOR | | |
| | | | DESIGN AUTHORITY | | |
| | | | ADDRDE, AGRA | | |
| | | | DRG. No. | | |
| | | | ADDRDE/1142 (2) | | |
| | | | SHEET 9 OF 18 | | |

PACK COVER

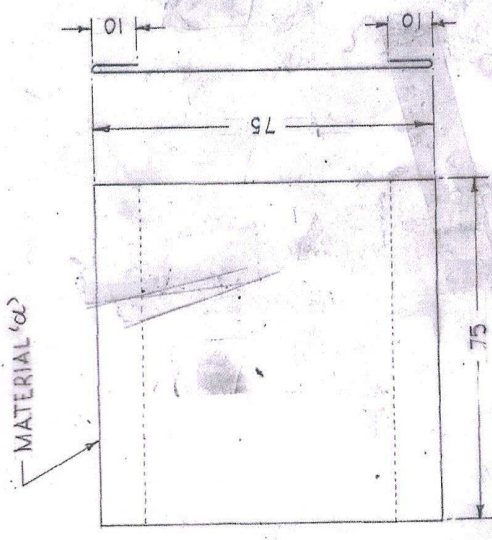
(PARACHUTE TACTICAL ASSAULT MAIN)

DRD/150/93

3 2 1
DRAWING CONVE NSIONS CONFORM TO ANSI/AIAA-5017-1991
GEN TOL. REFER SHEET No-1

SHEET 7 OF 18
DRG No. ADRDE/1142 (A)

6



STRENGTHENING PIECE

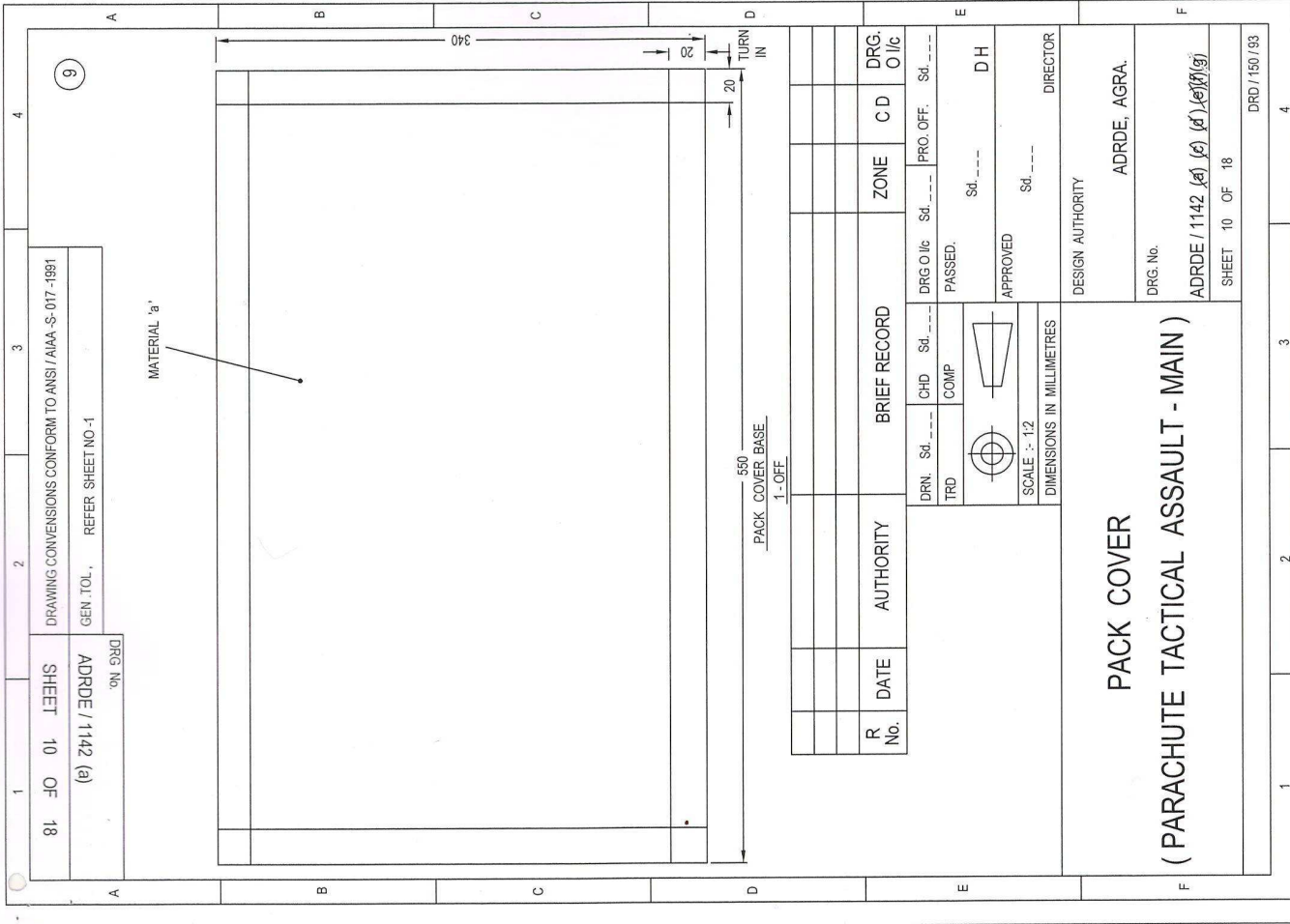
2-OFF

| | | |
|----------------|--------|----------|
| DRG No. | DRG CD | DRG B |
| ADRDE/1142 (A) | 0% | 0% |
| DRG No. | ZONE | PRO. OFF |
| ADRDE/1142 (A) | | DRD |
| SHEET 7 OF 18 | | |

| | | | |
|------------|------------------|----------|----------|
| DRG. 0% | PASSED | APPROVED | DIRECTOR |
| TRD | COMP | | |
| SCALE: 1:1 | DIMENSIONS IN mm | | |

PACK COVER
(PARACHUTE TACTICAL ASSAULT-MAIN)

DRD/150/93



18 OF 18 SHEETS
 (e) 2142 / EDRDE / 1142
 GEN. TOL., REFER SHEET NO-1
 DRAWING NO. 9
 DRAWING CONVERSIONS CONFORM TO ANSI / AIAA - S-017 - 1991

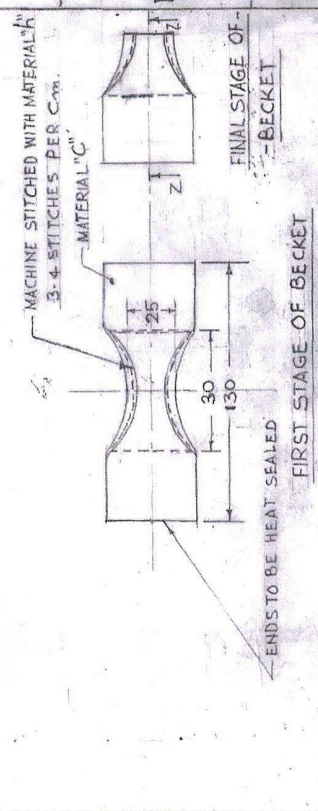
| R No. | DATE | AUTHORITY | BRIEF RECORD | ZONE | C D | DRG. O /c |
|-------|------|-----------|--------------|------|-----|-----------|
| | | | | | | |
| | | | | | | |
| | | | | | | |
| | | | | | | |

| | | | |
|--------------------------------------|-------------|------------------|-------------------|
| DRN. Sd. --- | CHD Sd. --- | DRG O /c Sd. --- | PRO. OFF. Sd. --- |
| TRD | COMP | PASSED. | |
| | | Sd. --- | DH |
| | | APPROVED | |
| | | Sd. --- | |
| SCALE :- 1:2 | | | |
| DIMENSIONS IN MILLIMETRES | | | |
| DESIGN AUTHORITY | | | |
| ADRDE, AGRA. | | | |
| DRG. No. | | | |
| ADRDE / 1142 (a) (c) (d) (e) (f) (g) | | | |
| SHEET 10 OF 18 | | | |
| DRD / 150 / 93 | | | |

PACK COVER
(PARACHUTE TACTICAL ASSAULT - MAIN)

4 3 2 1
DRAWING CONVENTIONS CONFORM TO ANSI/AIAA-5-017-1971
GEN TDL, REFER SHEET No. 1

DRG No. 10
ADDRDE/1142 (a)



| | |
|-----------------|----|
| DRG No. | 10 |
| ADDRDE/1142 (a) | |
| DRG No. | 10 |
| ADDRDE/1142 (a) | |
| SHEET 11 OF 18 | |

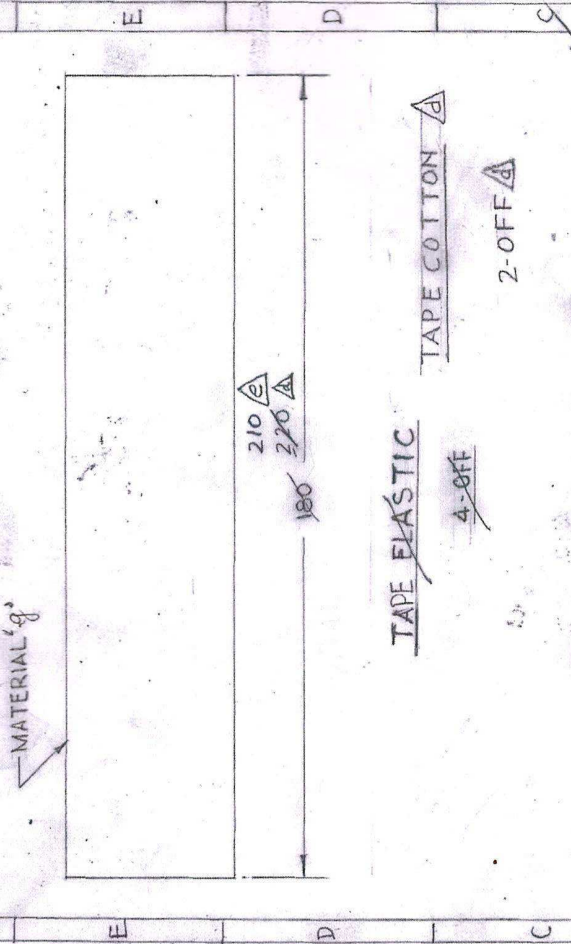
| | | | | |
|---|----------|------------------|--------------|--------------------|
| DRN/1142 | CHD SK 2 | BRIEF RECORD | ZONE CD | DRG |
| TRD | COMP | PASSED | DRG 0 1/2 | PRO. OFF. 11/18/93 |
| | | APPROVED | DH | |
| SCALE: 1:1.2 DIMENSIONS IN MM | | DESIGN AUTHORITY | ADDRDE, AGRA | |
| PACK COVER (PARACHUTE TACTICAL ASSAULT MAIN) | | DRG No. | 10 | |
| | | ADDRDE/1142 (a) | 11/18/93 | |
| | | SHEET 11 OF 18 | | |

4 3 2
DRD/150/93

4 3 2 1
DRAWING CONVERSIONS CONFORM TO ANSI/AIAA-S-017-1991

GEN TOL. REFER SHEET NO-1
DRG. No. **ADRDE/1142 (a)**

SHEET 12 OF 18
(11)

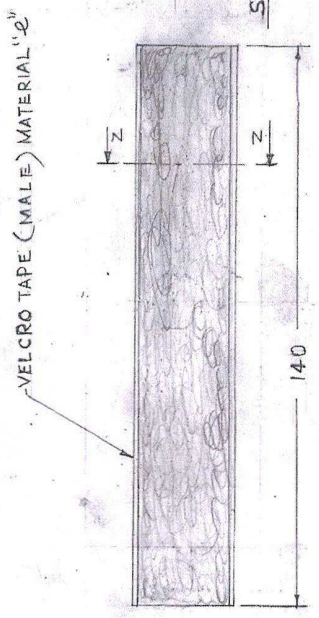


| | | | | | |
|------|----------|------------|---|----------------|----------------------|
| (d) | 28-12-07 | C/SHEET-53 | 3- INSTEAD 4-OFF 2-OFF 2- MTL CHANGED 1- DIM CHANGED 180 TO 220 | 3-C 3-D | DRG 0% |
| R No | DATE | AUTHORITY | BRIEF-RECORD | ZONE (D) | DRG |
| DRN | CHKD | IRD | COMP | DRG 0% PRO-OFF | APPROVED |
| | | | | PASSED | DH |
| | | | | | DIRECTOR |
| | | | | | DESIGN AUTHORITY |
| | | | | | ADDRDE, AGRA |
| | | | | | DRG. No. 1018 |
| | | | | | ADDRDE/1142 (a) (11) |
| | | | | | SHEET 12 OF 18 |

PACK COVER
(PARACHUTE TACTICAL ASSAULT MAIN)

DRG. No. 13 OF 18
 SHEET 13 OF 18
 DRAWING CONVENTIONS CONFORM TO ANS/AIAA-5-017-1991

GEN TOL REFER SHEET No-1
 DRG. No. 12
 ADDRDE/1142 (A)



TAPE FASTENER (HOOK)
 4-OFF

| | | | | | |
|-------------------|------|------------------|--------------|-------------------------|----------|
| DR. No. | DATE | AUTHORITY | BRIEF RECORD | ZONE CD | DRG. No. |
| | | | | | 012 |
| DRN. No. 13 OF 18 | | TAD. COMP | | DRG. 012 PRO. OFF. 1991 | |
| SCALE: 1:1 | | APPROVED | | PASS | |
| DIMENSIONS IN mm | | | | | |
| | | DIRECTOR | | | |
| | | DESIGN AUTHORITY | | ADDRDE, AGRA | |
| | | DRG. No. | | ADDRDE/1142 (A) | |
| | | SHEET 13 OF 18 | | | |
| | | DRD/150/93 | | | |

PACK COVER
 (PARACHUTE TACTICAL ASSAULT-MIN)

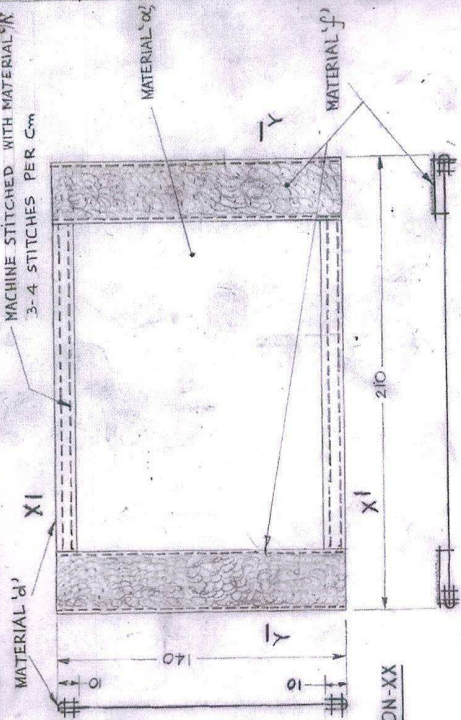
18
DRAWING CONVERSIONS CONFORM TO ANSI/ASME-Y-107-1997/
SHEET 14 OF 18

GEN. TOL. REFER SHEET No-1

DRG No.

ADRDE/1142 (2)

13



SECTION-XX

SECTION:YY

COVER FOR STORAGE LOOP

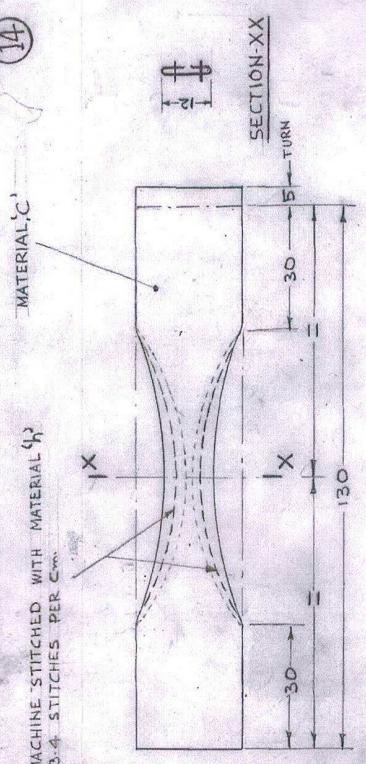
2-0FE

| | | | | | | |
|--|------|-----------|---------------------------|----------|----|---------|
| R No. | DATE | AUTHORITY | BRIEF RECORD | ZONE | CD | DRG D/C |
| | | | | | | |
| | | | DRG D/C | PRO OFF | | |
| | | | TRD | COMP | | |
| | | | APPROVED | DH | | |
| | | | | DIRECTOR | | |
| SCALE: 1:2 | | | DIMENSIONS IN MILLIMETRES | | | |
| <p>PACK COVER</p> <p>(PARACHUTE TACTICAL ASSAULT MAIN)</p> | | | | | | |
| DESIGN AUTHORITY | | | ADRDE, AGRA | | | |
| DRG No. | | | ADRDE/1142 (2) | | | |
| SHEET 14 OF 18 | | | | | | |

DRD/150/93

6 5 4 3 2 1
 H G F E D
 DRAWING CONVENTIONS CONFORMS TO AISI/AIAA-5-017-1997
 GEN. TOL. REFER SHEET No-1
 DRG. No. 14

8 7 6 5 4 3 2 1
 H G F E D
 SHEET 15 OF 18
 ADDRDE/1142 (2)

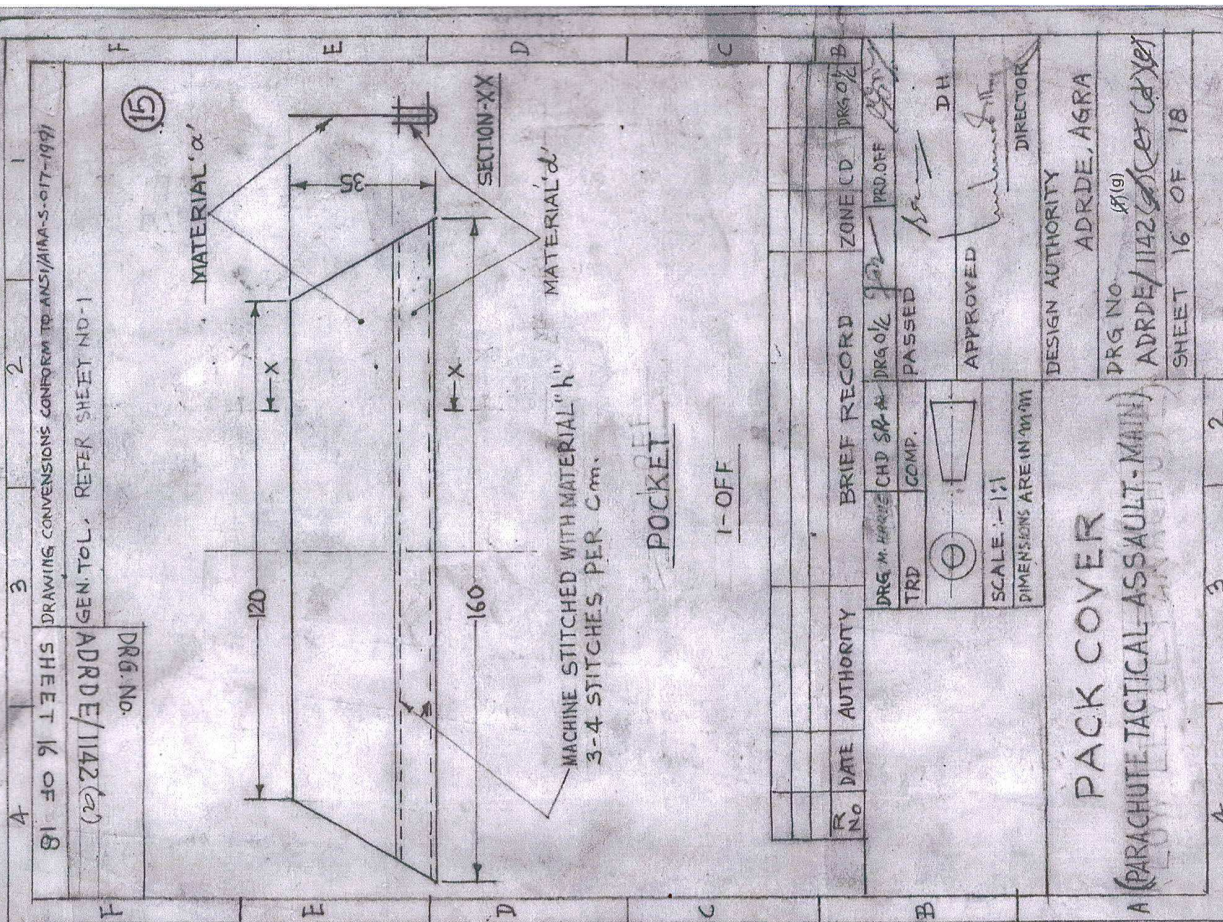


DETAILS LOOP, FOR PACK CLOSING

7-OFF

| | | | | | |
|-----------------------------------|------|-----------|---------------------------|---------|----------|
| R. No. | DATE | AUTHORITY | BRIEF RECORD | ZONE CD | DRG. O/C |
| | | | CHKD SK/ dt PASSSED | PRO OFF | |
| | | | TRD COMP. | | |
| | | | APPROVED | | |
| | | | SCALE: 1:1 | | |
| | | | DIMENSIONS IN MILLIMETRES | | |
| PACK COVER | | | DESIGN AUTHORITY | | |
| (PARACHUTE TACTICAL ASSAULT MAIN) | | | ADDRDE, AGRA | | |
| | | | DRG. No. 14(9) | | |
| | | | ADDRDE/1142 (2) | | |
| | | | SHEET 15 OF 18 | | |

DRD/150193



15

DRAWING CONVENTIONS CONFORM TO: ANSI/AIAA-S-017-1997

GEN. TOL. REFER SHEET NO-1

DRG. No. ADDRDE/1142 (2)

DRG. No. ADDRDE/1142 (2)

SHEET 16 OF 18

PACK COVER

(PARACHUTE TACTICAL ASSAULT-MAIN)

DRG. M. APPROV. CHD SR. DRG. OLC. PASSED

TRD. COMP.

APPROVED

SCALE: 1:1

DIMENSIONS ARE IN MM

DATE AUTHORITY

BRIEF RECORD

ZONE CD DRG. OLC. B

DRG. OLC. PASSED

PROD. OFF. DH

APPROVED

DIRECTOR

DESIGN AUTHORITY

ADDRDE, AGRA

DRG. No. 1519

ADDRDE/1142 (2)

SHEET 16 OF 18

POCKET

1-OFF

DRG. M. APPROV. CHD SR. DRG. OLC. PASSED

TRD. COMP.

APPROVED

SCALE: 1:1

DIMENSIONS ARE IN MM

DATE AUTHORITY

BRIEF RECORD

ZONE CD DRG. OLC. B

DRG. OLC. PASSED

PROD. OFF. DH

APPROVED

DIRECTOR

DESIGN AUTHORITY

ADDRDE, AGRA

DRG. No. 1519

ADDRDE/1142 (2)

SHEET 16 OF 18

PACK COVER

(PARACHUTE TACTICAL ASSAULT-MAIN)

DRG. M. APPROV. CHD SR. DRG. OLC. PASSED

TRD. COMP.

APPROVED

SCALE: 1:1

DIMENSIONS ARE IN MM

DATE AUTHORITY

BRIEF RECORD

ZONE CD DRG. OLC. B

DRG. OLC. PASSED

PROD. OFF. DH

APPROVED

DIRECTOR

DESIGN AUTHORITY

ADDRDE, AGRA

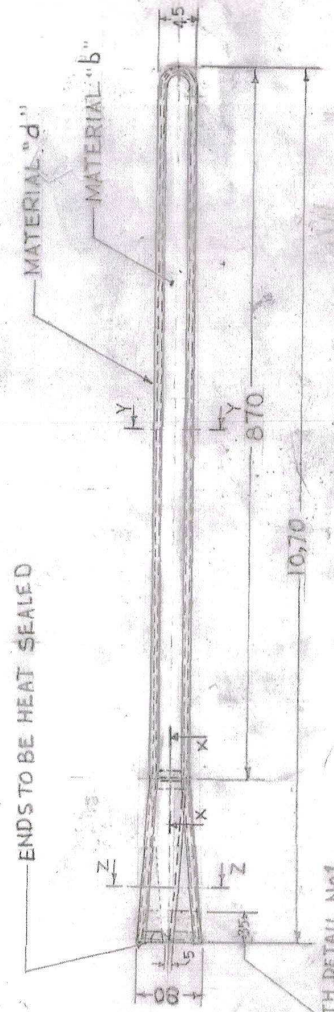
DRG. No. 1519

ADDRDE/1142 (2)

SHEET 16 OF 18

DRD/150/93

DRAWING CONVENTIONS CONFORM TO ANSI/AIAA-5-017-1991
 GEN. TOL. REFER SHEET No-1
 DRG No
 ADRDE/1142 (g)
 SHEET 17 OF 18



WAIST BELT
 1-OFF
 MATERIAL "d"
 SECTION: XX

NOTE:-
 ALL MACHINE STITCHED WITH MATERIAL "d"
 3-4 STITCHES PER CM.

| | | |
|------------------|------|----------|
| DRN 82 | CHD | PRD OFF |
| TRD | COMP | PASSED |
| APPROVED | | DH |
| DESIGN AUTHORITY | | DIRECTOR |
| ADRDE, AGRA | | |
| DRG No | | (g) |
| ADRDE/1142 | | (g) |
| SHEET 17 OF 18 | | |

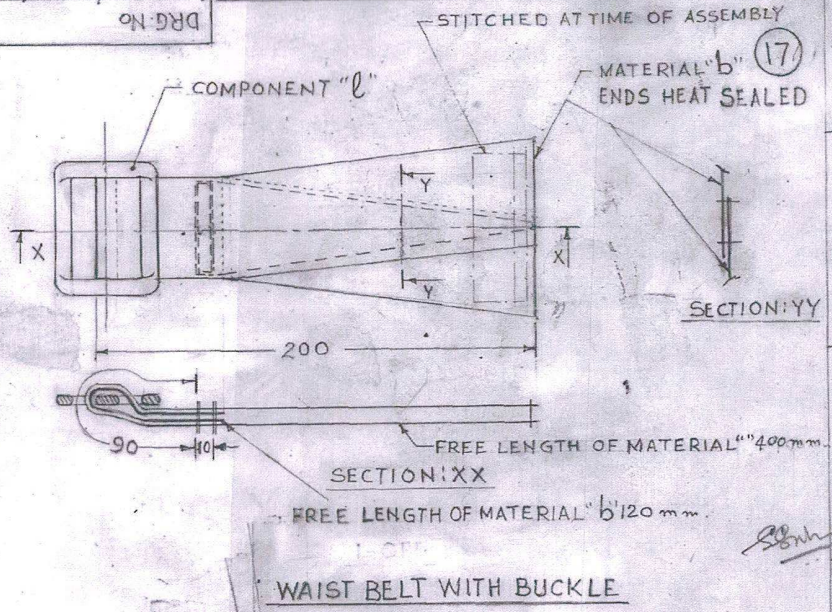
| R No | DATE | AUTHORITY | BRIEF RECORD | ZONE | CD | DRG No | DIMENSIONS IN mm |
|------|------|-----------|--------------|------|----|--------|------------------|
| | | | | | | | |
| | | | | | | | |
| | | | | | | | |
| | | | | | | | |

PACK COVER
 (PARACHUTE TACTICAL ASSAULT-MAIN)

1991-107-S-1111/ANSI CONFORM TO DRAWING CONVENTIONS SHEET 18 OF 18

GEN TOL. REFER SHEET No-1

DRG No. ADRDE/1142 (g)



| | | | | | |
|------|------|-----------|--------------|---------|---------|
| R No | DATE | AUTHORITY | BRIEF RECORD | ZONE CD | DRG O/C |
|------|------|-----------|--------------|---------|---------|

| | | | |
|------------------|------|----------|---------|
| DRN | CHD | DRG O/C | PRO OFF |
| TRD | COMP | PASSED | |
| | | APPROVED | |
| SCALE 1:2 | | DIRECTOR | |
| DIMENSIONS IN mm | | | |

PACK COVER
(PARACHUTE TACTICAL ASSAULT-MAIN)

DESIGN AUTHORITY
ADRDE, AGRA

DRG No (g) ADRDE/1142 (g)

SHEET 18 OF 18