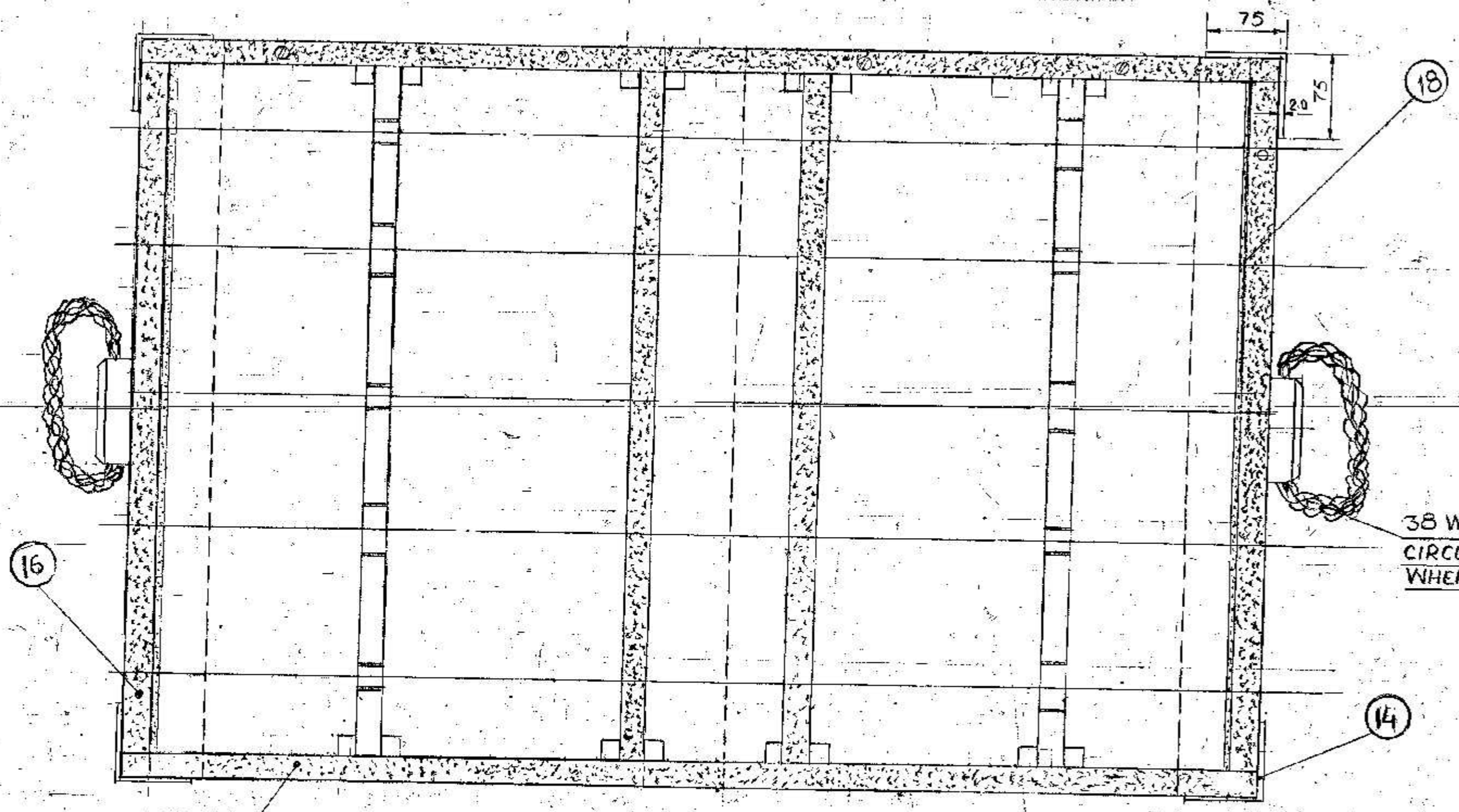
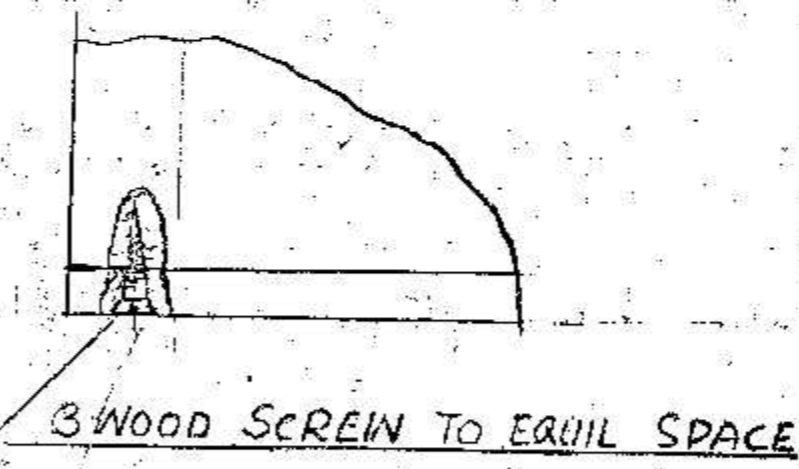


SK-5026

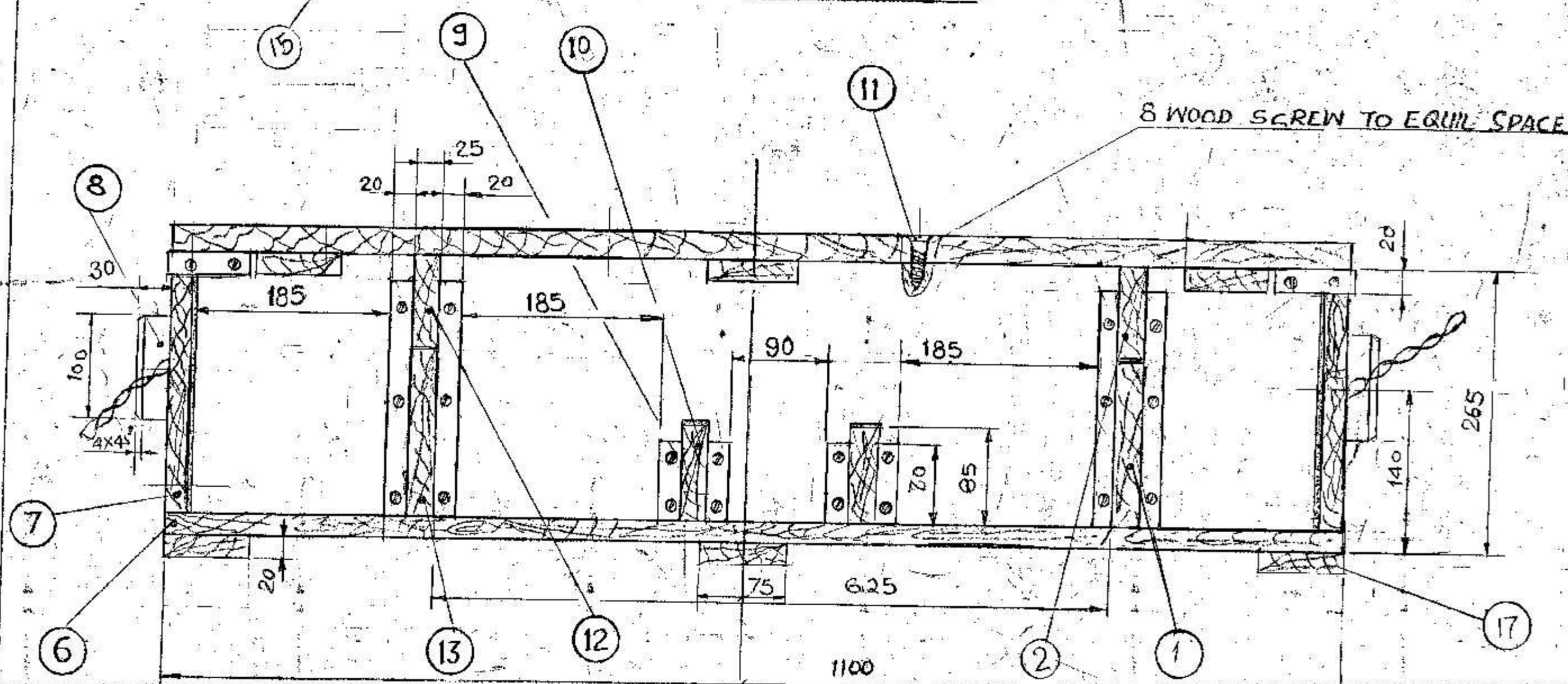


VIEW WITHOUT LID

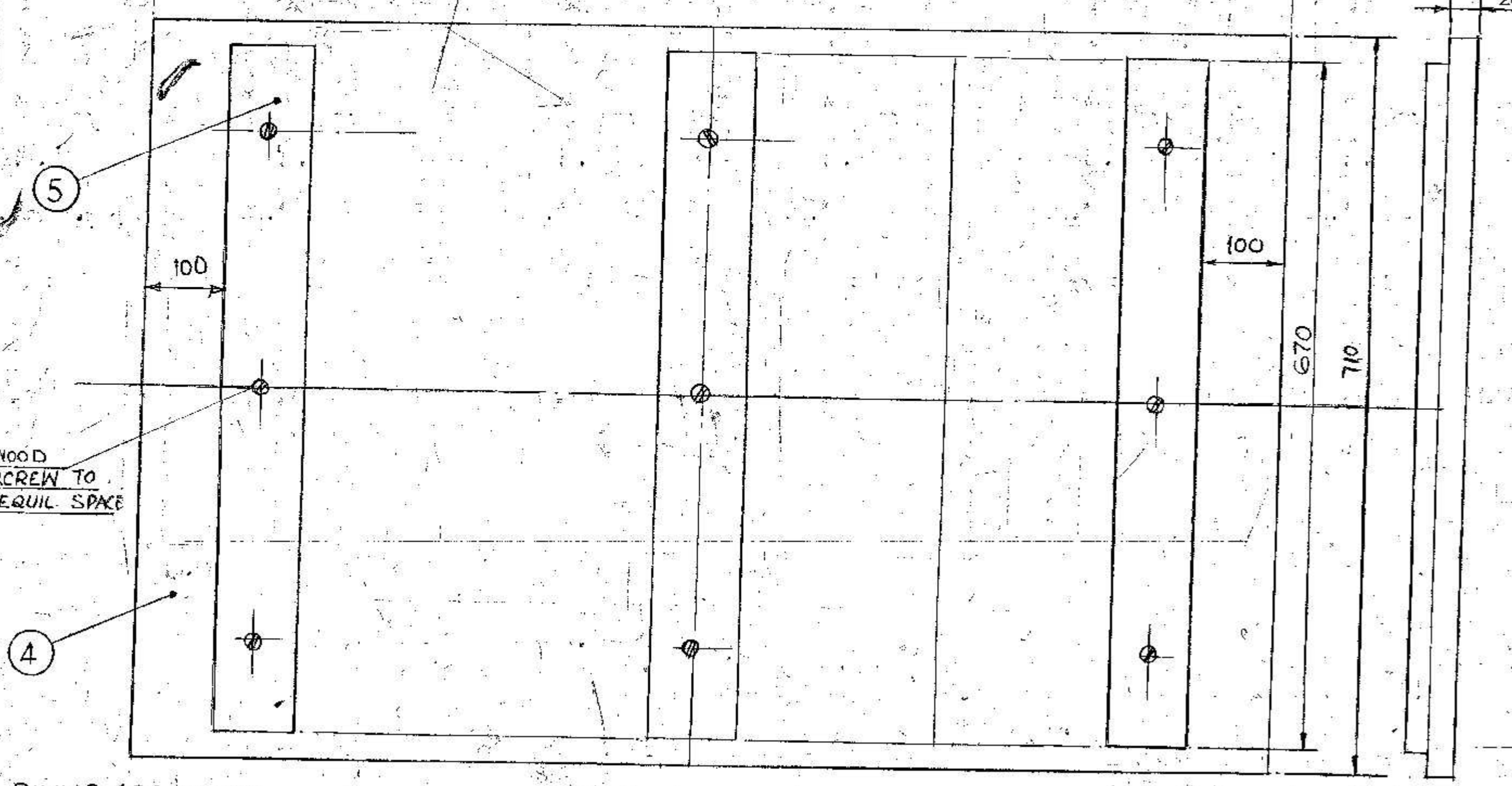
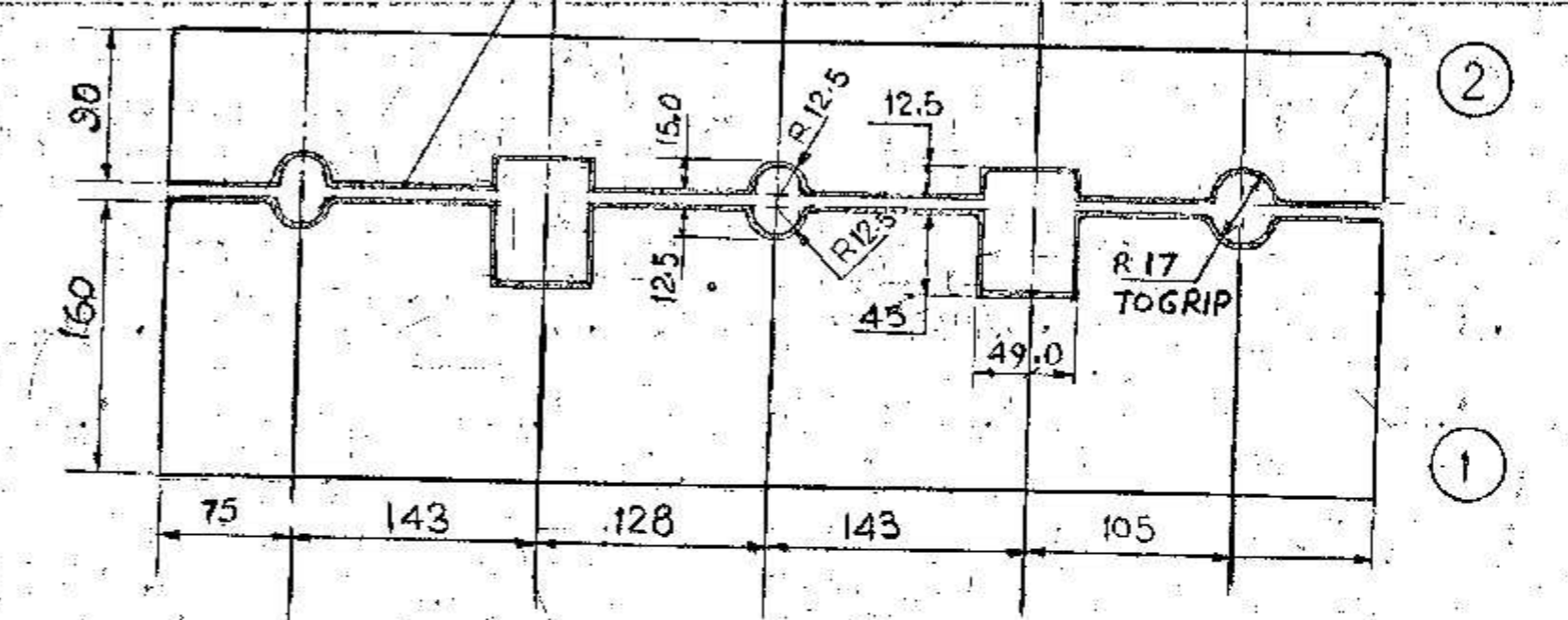
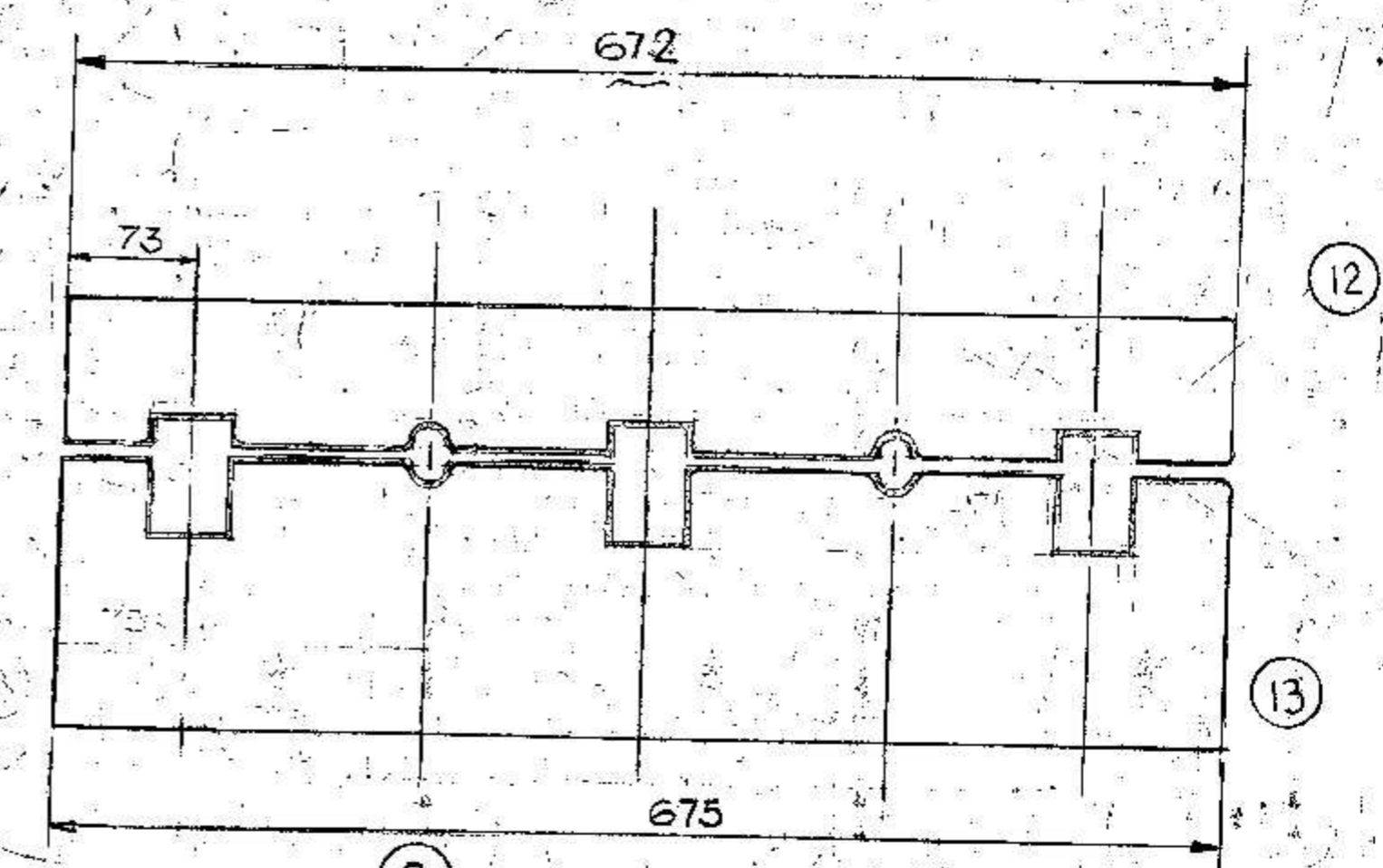
38 WHITE ROPE 559
CIRCUMFERENCE
WHEN SPLICED



3 WOOD SCREW TO EQUIL SPACE



8 WOOD SCREW TO EQUIL SPACE



DIMNS ARE IN MM

LID

MATL :- DEODAR, CHIR, PLANKS OR ANY OTHER APPROVED TIMBER
PRESERVATION :- DIPPED IN COPPER NEPHENATE SOLUTION.
NOTE :- 1. PROCESSED FELT JOIT WITH HESSIAN REINFORCEMENT
ON BOTH SIDE TO SPECN. IND/ME/889C/PROY IN LIEU OF
FELT WOOLLEN TO SPECN. IS 1719 MAY ALSO BE USED
2 FELT TO BE FIXED WITH GLUE/PEVICOL
PAINTING :- OLIVE GREEN OUT SIDE & RED OXIDE IN SIDE

18	FELT 675X245X3	2	AS STATED
17	BATON PLANK 1100X75X20	3	AS STATED
16	FELT LINING 670X20X3 THICK	2	" "
15	FELT LINING 1100X20X3 THICK	2	" "
14	SIDE CLAMP	4	MS
13	FIXED PIECE 675X155X20	1	AS STATED
12	SLIDING PIECE 672X85X20	1	" "
11	WOOD SCREW NO 10X50 LONG	112	MS
10	RIB 675X85X25	2	AS STATED
9	RIB 70X20X15	8	" "
8	HANDLE	2	" "
7	SIDE PLANK 675X265X20	2	" "
6	BOTTOM PLANK 1100X710X20	1	" "
5	BATON 670X75X20	3	" "
4	LID 1100X710X20	1	" "
3	FELT LINING 745X20X3 THICK	4	" "
2	SLIDING PIECE 670X85X20	1	" "
1	FIXED PIECE 675X155X20	1	" "
SL. NO	DESCRIPTION	NO. OF	MAT. TREAT. REMK.

SCHEDULE OF PARTS

LMG. 5.56 mm D.P.
DRG. NO. SK 4958

WOODEN CHEST TO ACCOMODATE
5 NOS. D.P. LMG.

SCALE 1:4

SMALL ARMS FACTORY
KANPUR

DRN. CHD. APPROVED

J.W.MIDOL

DRG. NO. SK 5026
SHT. 1 OF 1