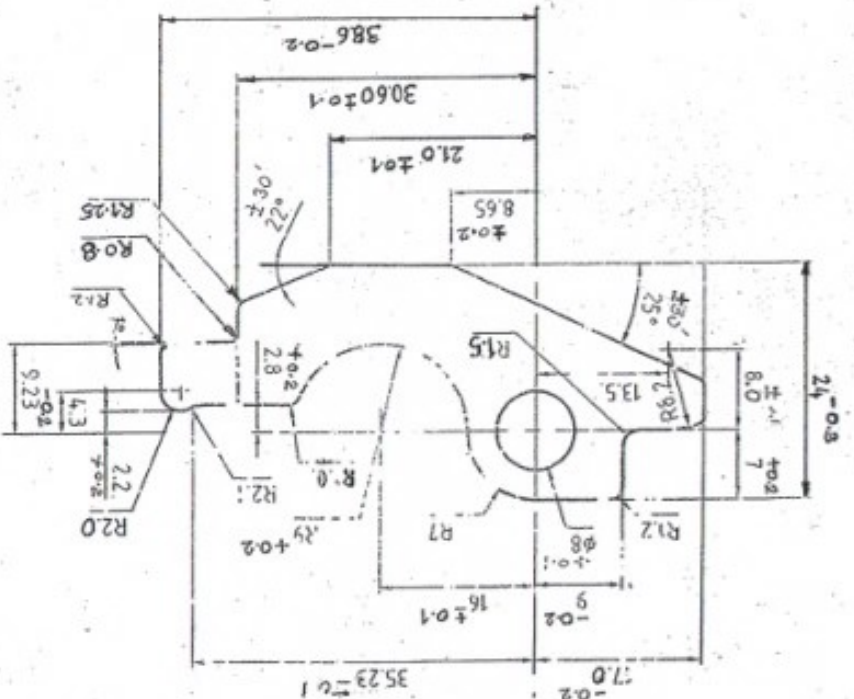


1109

DRG PROVISIONAL



DIMENSIONS ARE IN MM.
 UNACCELERATED DIMS. AS PER IS : 2102 (MED)
 MARK DRAWING NO.
 SHARP CORNER TO BLUNT TO R0.2

PROTECTIVE FINISH:

PHOSPHATED TO SPEC. 395 : 0465-01-1988
 CLASS - I (ACCELERATED) OIL FINISH

ALT. MATL. - BS. 970 PTL-1983 GR.709 M40

MATERIAL: EN19
 HARDNESS : RC 32 - 36

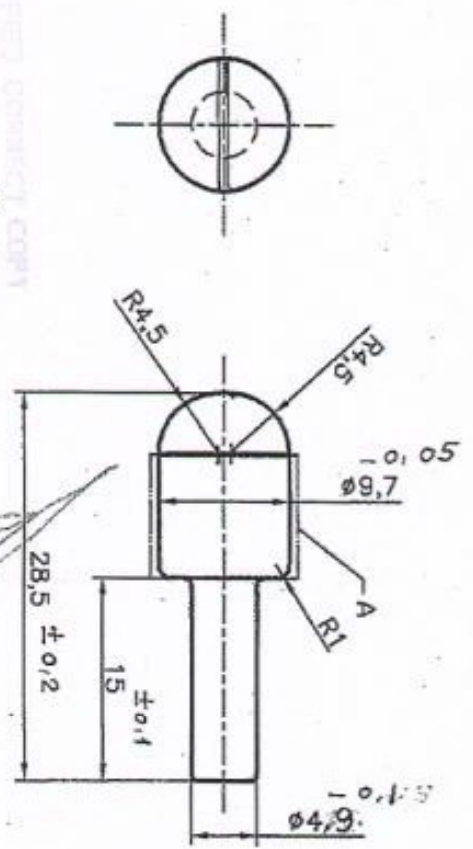
PART NO		DESCRIPTIONS		SIGNATURE & DATE		TRACED		DRAWN		CHECKED		QC/INOC		OFFER. PRODN.		Sg	
SCALE		SUB 15mm PRIMARY EXTRACTION LEVEL		FOR 145mm BOLT ASSY		DR: 145 / 20mm AIR		DESIGN NO.		DRC: 44P 14011		ORDNANCE FACTORY		TRUCHIRAPPALLU-16		APPROVED ON 08/4/07	
STORE CRG NO		MATERIAL		TREATMENT		REMARKS		NO		OFF		MATERIAL		TREATMENT		REMARKS	
MATERIAL		TREATMENT		REMARKS		NO		OFF		MATERIAL		TREATMENT		REMARKS		NO	
MATERIAL		TREATMENT		REMARKS		NO		OFF		MATERIAL		TREATMENT		REMARKS		NO	

UN CONTROLLED COPY

DRG. NO. **44P 14012***

DIMENSIONS ARE IN mm.
 UNTOLERATED DIMS. AS PER IS : 2102 (MED)
 MARK DRAWING No.

SHARP CORNERS TO BE BLUNT.
 SURFACE 'A' TO BE CHROME PLATED
 TO A DEPTH OF 0.01mm



IDENTIFIED CONTACT COPY
 OF APPROVED DRAWINGS
 AT THIS DRAWING OFFICE
 Design & Drawing Office
 Ordnance Factory,
 Tiruchirappalli-606

UN CONTROLLED COPY

PROVISIONAL DRG.

MATERIAL:- 30 X H2 M ϕ A GOST 4543-71 HARDNESS: 260-300
 SURFACE FINISH:- PHOSPHATED TO SPECIFICATION. JSS : 0465-01-1988
 CLASS-1 (ACCELERATED) OIL FINISH.

ALT.MATL: BS: 970 PT.1-1983 GR. B26 M31 (COR) EN. 25
 FINAL HARDNESS: RC. 42-48
 ALT.MATL:(OR) IS: 5517-1993, DESIGN. 31 NI 10 Cr3 Mo6

PART NO.	DESCRIPTIONS	SIGNATURE & DATE	NO OFF	MATERIAL	TREATMENT	REMARKS
	TRACED					SCALE NTS
	DRAWN	R. N. [Signature]				STORE DRG. NO.
	CHECKED	[Signature]				OPERATION NO.
	OIC/D&DO					
	OFFICER/PRODN.					
	OFFICER/D&DO					
	APPROVED ON. 07/05					

DR. NO. 006/07
 4/10/07
 S/No 35
 DA.No. 02/19
 30-3/19

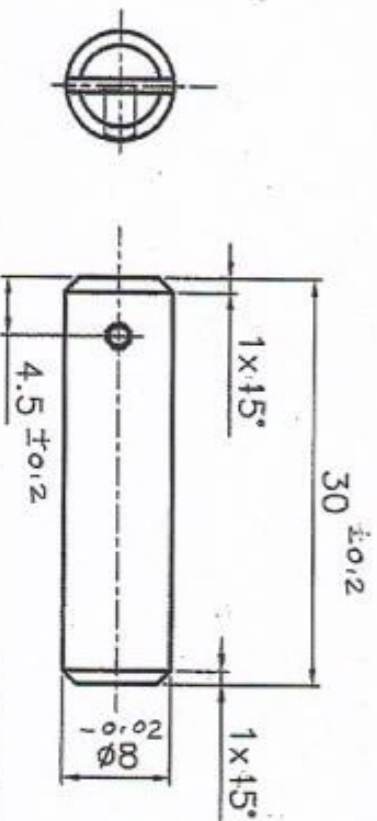
ORDNANCE FACTORY
 TIRUCHIRAPPALLI-16.

SHEETS: 1
 SHEET No.: 1

DRG. NO. 44P 14013*

DIMENSIONS ARE IN mm.
 UNTOLERATED DIMS. AS PER IS : 2102 (MED)
 MARK DRAWING No.

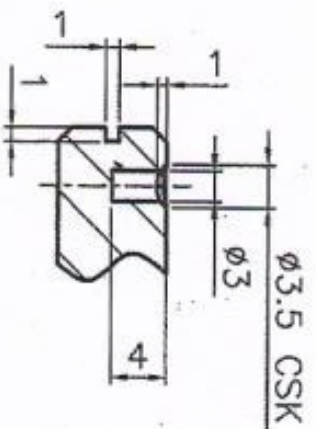
PROVISIONAL DRG.



QIN CONTROLLED COPY

CERTIFIED CORRECT COPY
 OF APPROVED DRAWINGS
 AT THE

Design & Drawing Office,
 Ordnance Factory,
 Tiruchirappalli-630016



MATERIAL: ~~FT4~~ PH SS 15: 6527-1995 DESIGN. X04C18 Ni10
 +0.005

ALT. MATL: EN19 CHROME PLATING THICKNESS 0.010 0.4

HARDNESS: 390-450 HV-D

PART NO.	DESCRIPTIONS	SIGNATURE & DATE	NO OFF	MATERIAL	TREATMENT	REMARKS
	TRACED					SCALE NTS
	DRAWN	<i>E. Vive</i>				STORE DRG. NO.
	CHECKED	<i>Madhavan</i>				OPERATION NO.
	OFFICER/PRODN.					SHEETS: 1
	OFFICER/D&DO					SHEET No.: 1
	OFFICER/D&DO					
	AMENDMENTS					

DR. NO. 006/07

4/10/07

36-8-19

DRG. No.: 44P 14013*

ORDNANCE FACTORY
 TRUCHIRAPPALLI-16.

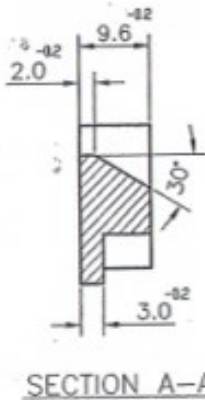
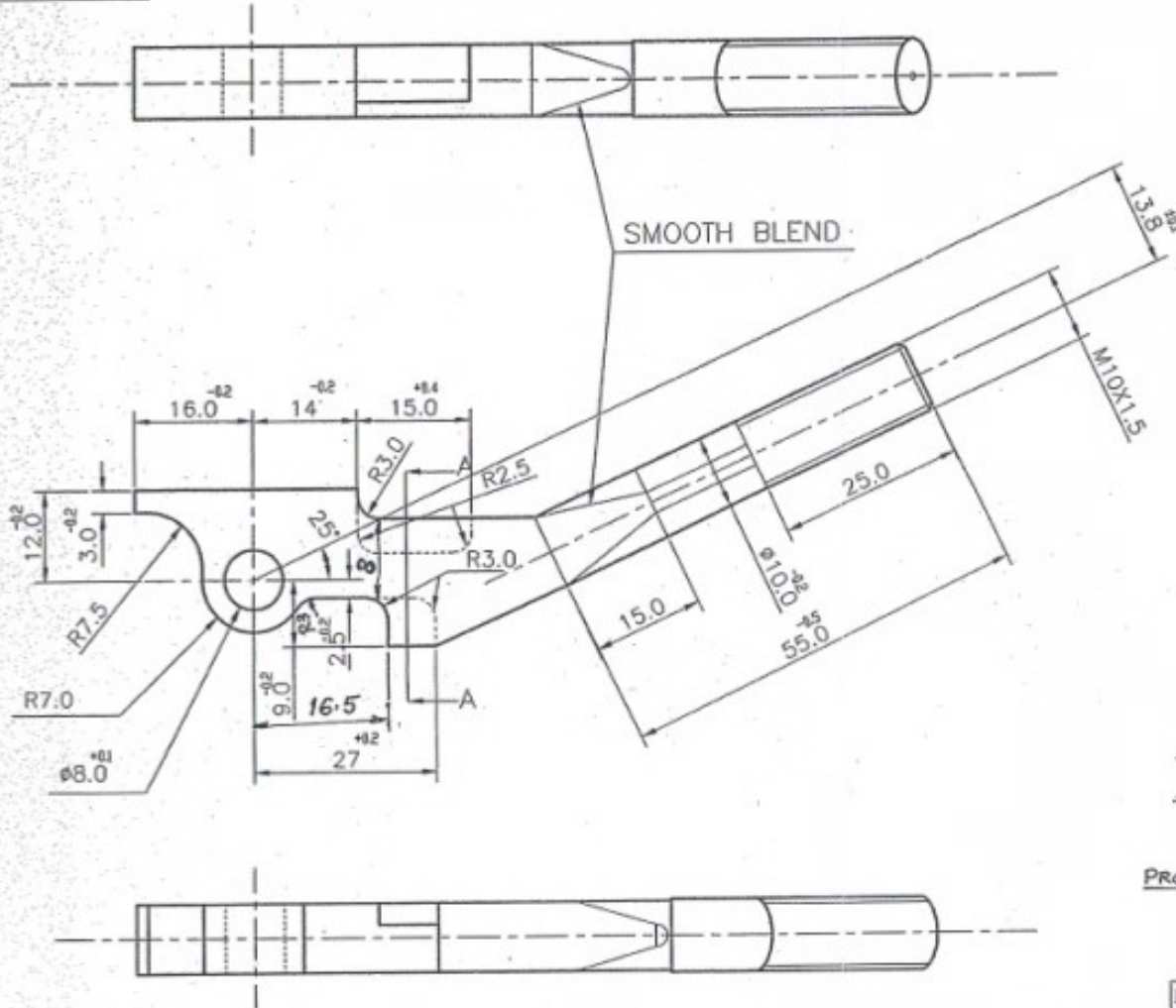
OPERATION NO.

AMENDMENTS

APPROVED ON 07/05

ORDNANCE FACTORY
 TRUCHIRAPPALLI-16.

SHEETS: 1
 SHEET No.: 1



MATL: EN 19

ALT. MATERIAL:- BS.970 GR.709 M40

HARDNESS:- RC 32 - 38

PROTECTIVE FINISH:-

PHOSPHATED TO SPECN. JSS : 0465 - 01 - 1988
CLASS - I (ACCELERATED) OIL FINISH.

DRG. PROVISIONAL

UN CONTROLLED COPY

CERTIFIED CORRECT COPY
OF APPROVED DIMENSIONS
AT THE
22/05/07

DIMENSIONS ARE IN mm.
INFORMATION MARKED THUS ' + ' TO BE MARKED ON
UNTOLERATED DIMENSIONS AS PER IS. 2102 (MEDIUM)

PART NO.	DESCRIPTIONS	NO OFF	MATERIAL	TREATMENT	REMARKS
⊕	SIGNATURE & DATE		SUB: 14.5mm BOLT LEVER		SCALE NTS
TRACED			FOR: 14.5mm BOLT ASSEMBLY		STORE DRG. NO.
DRAWN			OF: 14.5mm/20mm AMB		OPERATION NO.
CHECKED			DES. REF. NO: O.F.T		
OIC/DDO			DRG. NO: 44P 14014		
PROD. OFFICER					
DIV. OFFICER					
DDO					
AMENDMENTS	SIG. & DATE	APPROVED ON: 04/05/07	ORDNANCE FACTORY TIRUCHIRAPALLI-16.		SHEETS: 1 SHEET NO: 1

cad t/ Muthu gndale / 14.5mm Bolt lever-