

27P 6502

27P 6503

HOLE DRILLED & TAPPED
M4X0.7 THREAD 17.5 DEEP
ON ASSEMBLY WITH PLATE
PISTOL GRIP ASSY.

27P 6504

27P 6501

HOLE DRILLED & TAPPED NO.3 BA
THREAD 12.7 DEEP ON ASSY.
WITH GUARD TRIGGER ASSEMBLY

27P 6520*

27P 6510*

UN CONTROLLED COPY
CERTIFIED CORRECT COPY OF APPROVED
DRAWINGS AT THIS DATE... 10/5/22.....
DESIGN & DRAWING OFFICE,
ORDNANCE FACTORY, TIRUCHIRAPPALLI-620 016.

FOR EXPLANATION OF DIMENSIONING ETC. SEE ARDE NOTE SHEET 1 (LATEST ISSUE)

Material:		DWG Details		sub: GRIP, PISTOL ASSY.		Do not scale Excluding	
All. Material:		3rd Angle	DATE:	FOR:		All Dimensions are in mm.	
Hardness:		DRAWN	11-3-22	MODEL: 7.62 mm 1A1		QPG -	
Finish:		CHECKED		Design Ref: 1005-004030		WT.	
PREPARED		DESIGNED		DWG. NO.:		27P 6500*	
DATE		DATE		NO.:		A3	
10/02/2022				ORDNANCE FACTORY		TIRUCHIRAPPALLI-16.	
10/22/22				TIRUCHIRAPPALLI-16.		SHEET: 1 OF 1	



FOR EXPLANATION OF DETAILS WHEREVER NOT SPECIFIED,
REFER D.D. NOTE SHEET No.3 (LATEST ISSUE)

STD. FROM TRADE MAY ALTERNATIVELY BE USED

NOTE:

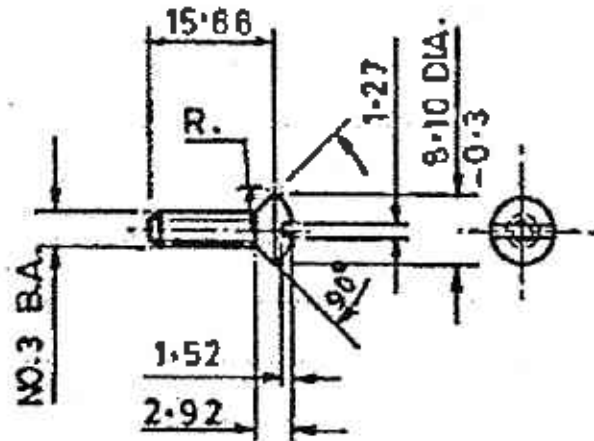
WHERE TOLERANCES ARE NOT SHOWN,

DIMENSIONS IN WHOLE NUMBER ± 1.27 mm

DIMENSIONS IN ONE DECIMAL PLACES ± 0.4 mm

DIMENSIONS IN TWO DECIMAL PLACES ± 0.13 mm

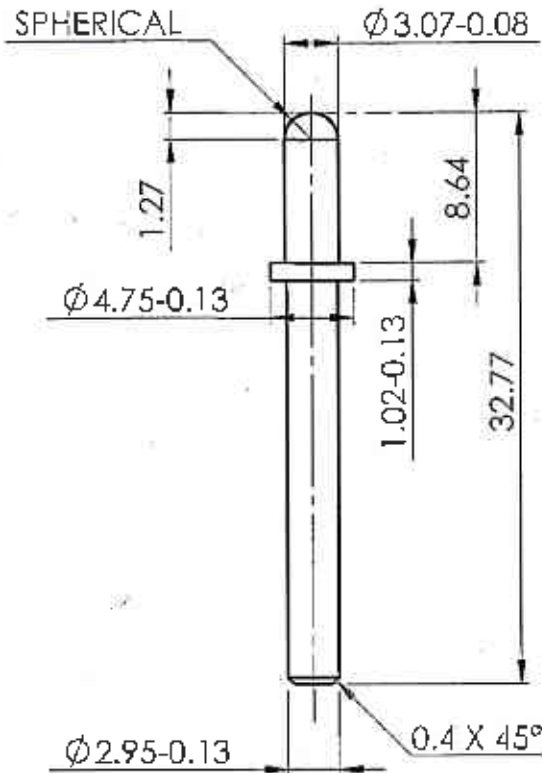
FOR SPECIFICATION LATEST ISSUE SHOULD BE FOLLOWED



UN CONTROLLED COPY
CERTIFIED CORRECT COPY OF APPROVED
DRAWINGS AT THIS DATE... 10/5/32
DESIGN & DRAWING OFFICE,
ORDNANCE FACTORY, TIRUCHIRAPPALI-620 016

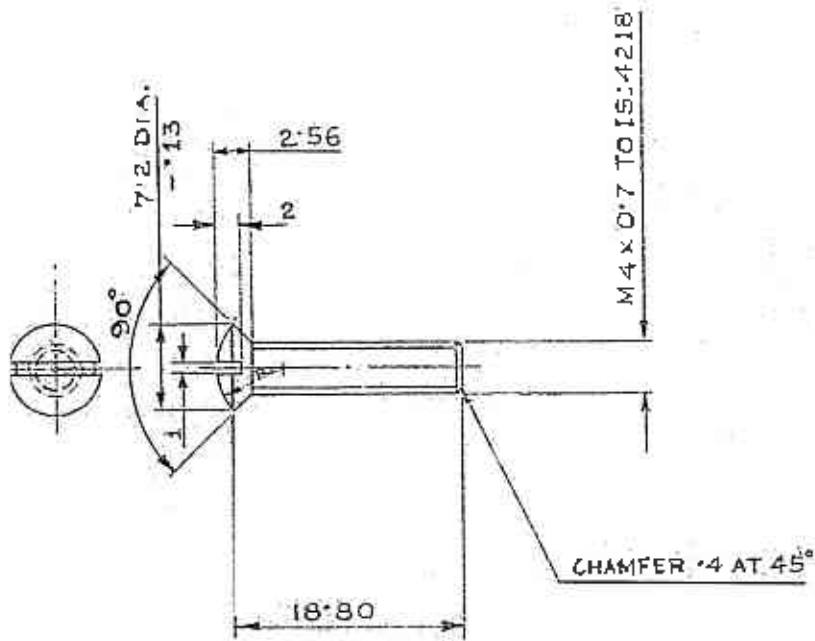
Material: IS:1673-1984 Gr.2		DWG Details		SUB: SCREW, PISTOL GRIP COVER	
		3rd Angle	SIGN	DATE	
All. Material:	DRAWN	<i>[Signature]</i>	17-3-22	FOR: GRIP, PISTOL ASSY.	Do not scale Drawing
	CHECKED	<i>[Signature]</i>		PROJ.: 7.62 mm 1A1	
Hardness	HOS/D&DO	<i>[Signature]</i>		Design Ref 5305-005001 (ICR 1377)	All Dimensions are in mm
	Div. Officer Prodn			DWG. No.: 27P 6501	
Finish PHOSPHATE TO SPECN. ISS-0465-01 1983 CLASS L OIL FINISH	Div. Officer QC			A4	QPG -
	Div. Officer DDO	<i>[Signature]</i>			ORDNANCE FACTORY TIRUCHIRAPPALI-16.
					Wt. (Approx) gm SHEET: 1 OF 1

NOTE:
 DIMENSIONS IN ONE DECIMAL PLACES ±0.4 mm
 FOR EXPLANATION OF DETAILS WHEREVER NOT SPECIFIED,
 REFER D.D.NOTE SHEET No.3 (LATEST ISSUE)



UN CONTROLLED COPY
 CERTIFIED CORRECT COPY OF APPROVED
 DRAWINGS AT THIS DATE 10/5/22
 DESIGN & DRAWING OFFICE,
 ORDNANCE FACTORY, TIRUCHIRAPPALI - 620 016.

Material: IS:5517-1993 DESIGN, 55C9		DWG Details		SUB: PLUNGER, TRIGGER SPRING	
Alt. Material:	DRAWN	SIGN	DATE	FOR: GRIP, PISTOL ASSY.	Do not scale Drawing
Hardness 425 TO 500 HV	CHECKED		12.3.22	PROJ.: 7.62 mm 1A1	
Finish PHOSPHATE TO SPECN L55-0465-01 1706 CLASS L OIL FINISH	HOS/D&DO			Design Ref 1005-001627 (ICR 1225)	All Dimensions are in mm
	Div. Officer Progn			DWG. No.: 27P 6502	A4 QPG -
	Div. Officer QC			ORDNANCE FACTORY TIRUCHIRAPPALI-16.	Wt. (Aopx) gm
	Div. Officer CDO				SHEET: 1 OF 1



UN CONTROLLED COPY
 CERTIFIED CORRECT COPY OF APPROVED
 DRAWINGS AT THIS DATE. 10/05/22

DESIGN & DRAWING OFFICE,
 ORDNANCE FACTORY, TIRUCHIRAPPALI - 620 016.

NOTE:
 GENERAL TOLERANCE ± 0.13 mm EXCEPT OTHERWISE STATED

Material: STEEL 070 M20 TO BS-970 P1, 1 1983 NORMALISED		DWG Details:		SUB: SCREW, PISTOL GRIP PLATE	
		Grd angle	SIGN	DATE	
All. Material:	DRAWN	<i>A. Ash</i>	17-3-22	FOR: GRIP, PISTOL ASSY.	Do not scale Drawing
	CHECKED	<i>P. Ash</i>		PROJ.: 7.62 mm 1A1	
Hardness:	HOS/D&DO	<i>P. Ash</i>		Design Ref 5305-005176 (ICR 1379)	All Dimensions are in mm
	Div. Officer Prodn			DWG. No.: 27P 6503	A4 QPG -
Finish PHOSPHATE TO SPEC LSS 245-01: *1968 CLASS II (ACCELERATED). OIL FINISH	Div. Officer QC				ORDNANCE FACTORY TIRUCHIRAPPALLI-16.
	Div. Officer DDO	<i>G. K. K</i>			
					SHEET: 1 OF 1

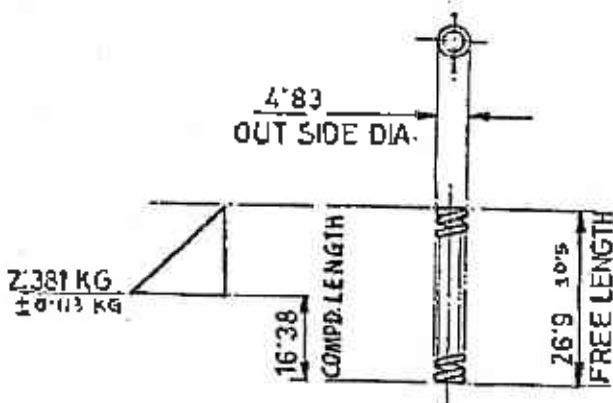
FOR EXPLANATION REFER D.D.NOTE SHEET No.3 (LATEST ISSUE)

NOTE:
 WHERE TOLERANCES ARE NOT SHOWN,
 DIMENSIONS IN WHOLE NUMBER +1.27 mm
 DIMENSIONS IN ONE DECIMAL PLACES +0.4 mm
 DIMENSIONS IN TWO DECIMAL PLACES +0.13 mm

DIA. OF WIRE 0.710
NO. OF COILS 16
ONE COIL AT EACH END TO BE CLOSED
IN GROUND SQUARE TO THE AXIS OF
THE SPRING. WOUND R.H.

NOTE :
THE SPRING TO WORK FREELY IN ITS
LOADED & UNLOADED CONDITION IN A
HOLE OF 6.35 DIA. & OVER A ROD OF
2.95 DIA.

CRAMP TEST :
THE SPRING TO BE COMPRESSED TO
A LENGTH OF 16.38 FOR A PERIOD OF
12 HOUR BEFORE GAUGING.



UN CONTROLLED COPY
 CERTIFIED CORRECT COPY OF APPROVED
 DRAWINGS AT THIS DATE. 10/5/20

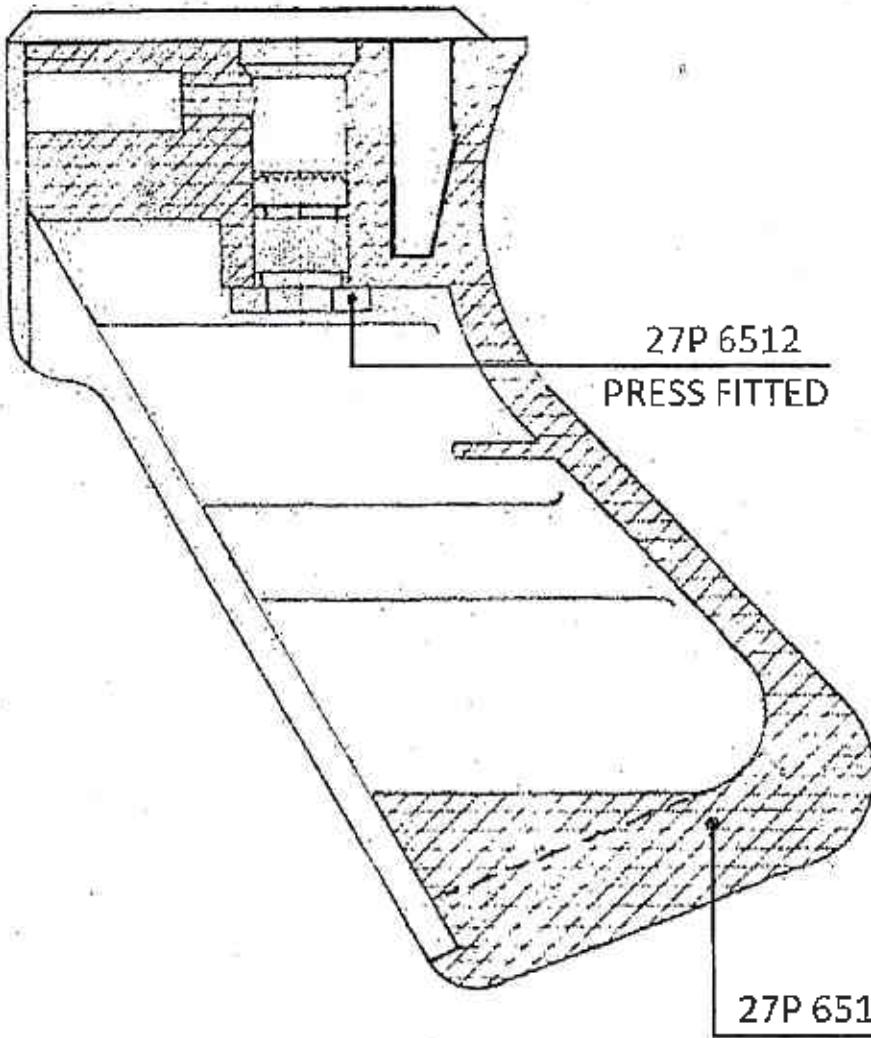
DESIGN & DRAWING OFFICE,
 ORDNANCE FACTORY, TIRUCHIRAPPALLI - 620 016.

Material: IS:4454 PART-1 2001, GRADE-DH	DWG Details		SUB: SPRING TRIGGER	
	3rd Angle	SIGN	DATE	
Alt. Material:	DRAWN	<i>A. Noda</i>	17-3-22	FOR: GRIP, PISTOL ASSY.
	CHECKED	<i>[Signature]</i>		PROJ.: 7.62 mm 1A1
Hardness	HOS/D&DO	<i>P. [Signature]</i>		Design Ref 5360-000739 (ICR 1232)
	Div. Officer Prodn			DWG. No.: 27P 6504
Finish PROSPINAL TO SPECN J580465-01: INR CLASS (ACCELERATED) OIL FINISH	Div. Officer QC			A4 QPG -
	Div. Officer DDO	<i>S. K. [Signature]</i>		WT. (Aprox) gm
				SHEET: 1 OF 1



ORDNANCE FACTORY
 TIRUCHIRAPPALLI - 16.

FOR EXPLANATION OF DIMENSIONING ETC. SEE ARDE NOTE SHEET-1 (LATEST ISSUE)



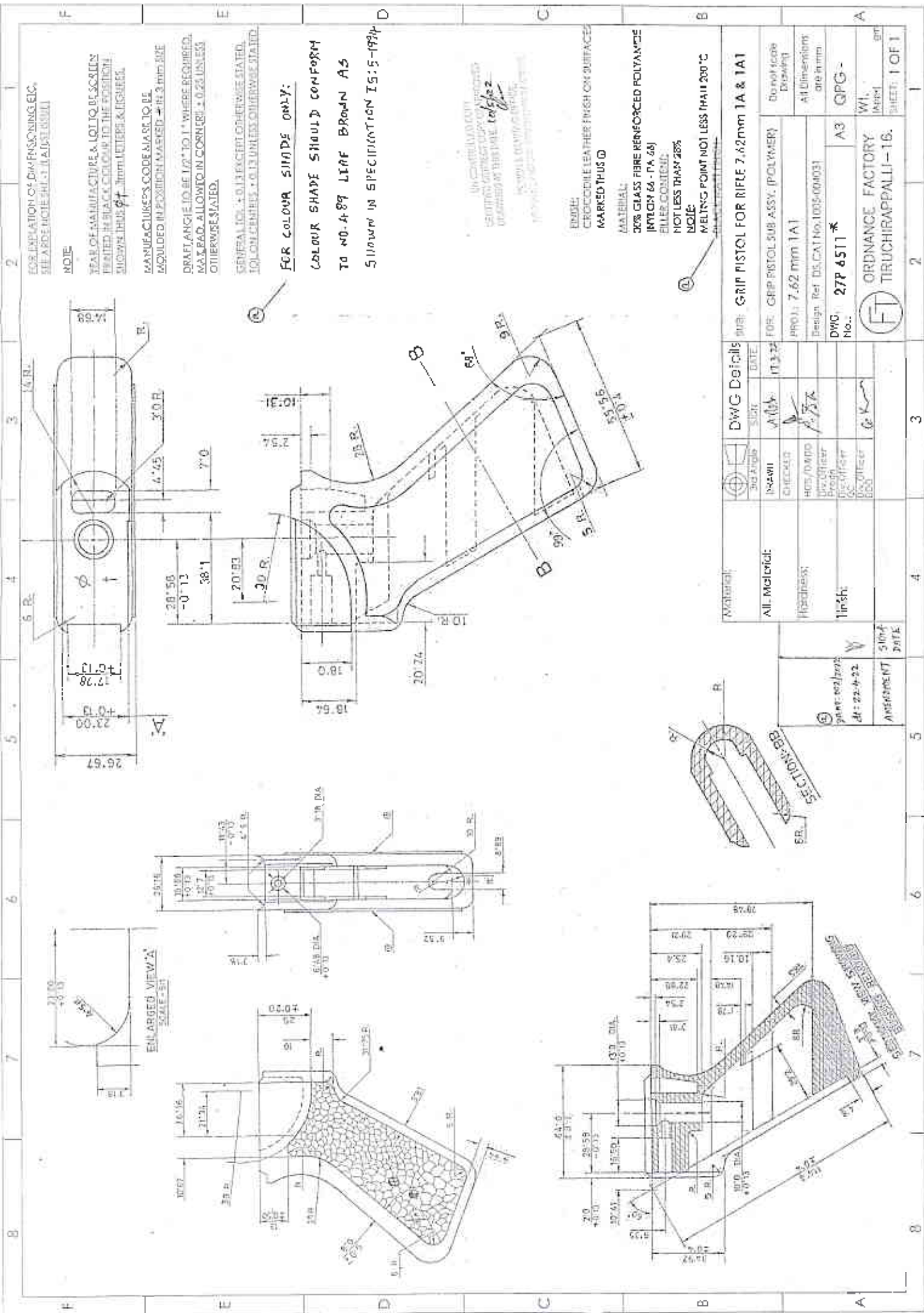
UN CONTROLLED COPY
 CERTIFIED CORRECT COPY OF APPROVED
 DRAWINGS AT THIS DATE... 10/05/22

DESIGN & DRAWING OFFICE,
 ORDNANCE FACTORY, TIRUCHIRAPPALI-620 016.

②	
DR: 002/2022	
AI: 22-4-2022	10/05/22
AMENDMENT	SIGN & DATE

Material:		DWG Details		SUB: GRIP PISTOL SUB-ASSY.(POLYMER)	
	3rd Angle	SIGN	DATE		
Alt. Material:	DRAWN	A. P. S.	17-3-22	FDR: GRIP, PISTOL ASSY.	Do not scale Drawing
Hardness	CHECKED			PROJ.: 7.62 mm 1A1	
Finish	HOS/D&DO	P. S. S.		Design Ref 1005-005452	All Dimensions are in mm
	Div. Officer Prodn			DWG. No.: 27P6510*	A4 QPG -
	Div. Officer OC			ORDNANCE FACTORY TIRUCHIRAPPALLI-16.	Wt. (Appx) gm
	Div. Officer BDO	G. K. S.			SHEET: 1 OF 1





FOR COLOUR SHIIDS ONLY:
 COLOUR SHADE SHOULD CONFORM
 TO NO.489 LIFF BROWN A5
 SHOWN IN SPECIFICATION IS:5-1994

30% GLASS FIBRE REINFORCED POLYANIDE
 (MAYCHE 66 - 1A 2A)
 NOT LESS THAN 40%
 MELTING POINT NOT LESS THAN 200 °C

CROCODILE LEATHER FINISH ON SURFACES
 MARKED THUS ⓐ

UNCONFORMING SURFACES TO BE FINISHED BY GRINDING OR SANDBLASTING TO REMOVE ALL BURRS AND TO PROVIDE A FINISH AS SPECIFIED IN THE DRAWING.
 ALL DIMENSIONS ARE IN MM.

Material	DWG Details	DATE	DATE	DATE	DATE	DATE	DATE
All-Material	DATE: 11-3-22	DATE: 11-3-22	DATE: 11-3-22	DATE: 11-3-22	DATE: 11-3-22	DATE: 11-3-22	DATE: 11-3-22
Headings	DESIGN: GRIP PISTOL SUB ASSY. (POLYMER)	DESIGN: GRIP PISTOL SUB ASSY. (POLYMER)	DESIGN: GRIP PISTOL SUB ASSY. (POLYMER)	DESIGN: GRIP PISTOL SUB ASSY. (POLYMER)	DESIGN: GRIP PISTOL SUB ASSY. (POLYMER)	DESIGN: GRIP PISTOL SUB ASSY. (POLYMER)	DESIGN: GRIP PISTOL SUB ASSY. (POLYMER)
Finish	PROJ: 7.62 mm 1A1	PROJ: 7.62 mm 1A1	PROJ: 7.62 mm 1A1	PROJ: 7.62 mm 1A1	PROJ: 7.62 mm 1A1	PROJ: 7.62 mm 1A1	PROJ: 7.62 mm 1A1
Sign-off	Design Ref: DS,CAT No:1005-004031	Design Ref: DS,CAT No:1005-004031	Design Ref: DS,CAT No:1005-004031	Design Ref: DS,CAT No:1005-004031	Design Ref: DS,CAT No:1005-004031	Design Ref: DS,CAT No:1005-004031	Design Ref: DS,CAT No:1005-004031
Assessment	DWG. No.: 27P 4511	DWG. No.: 27P 4511	DWG. No.: 27P 4511	DWG. No.: 27P 4511	DWG. No.: 27P 4511	DWG. No.: 27P 4511	DWG. No.: 27P 4511
Sign-off	QPG	QPG	QPG	QPG	QPG	QPG	QPG
Material	ORDNANCE FACTORY TIRUCHIRAPPALLI-16.	ORDNANCE FACTORY TIRUCHIRAPPALLI-16.	ORDNANCE FACTORY TIRUCHIRAPPALLI-16.	ORDNANCE FACTORY TIRUCHIRAPPALLI-16.	ORDNANCE FACTORY TIRUCHIRAPPALLI-16.	ORDNANCE FACTORY TIRUCHIRAPPALLI-16.	ORDNANCE FACTORY TIRUCHIRAPPALLI-16.
Sign-off	WT.	WT.	WT.	WT.	WT.	WT.	WT.
Assessment	SHEET: 1 OF 1	SHEET: 1 OF 1	SHEET: 1 OF 1	SHEET: 1 OF 1	SHEET: 1 OF 1	SHEET: 1 OF 1	SHEET: 1 OF 1

ENLARGED VIEW 'A'
 SCALE: 5:1

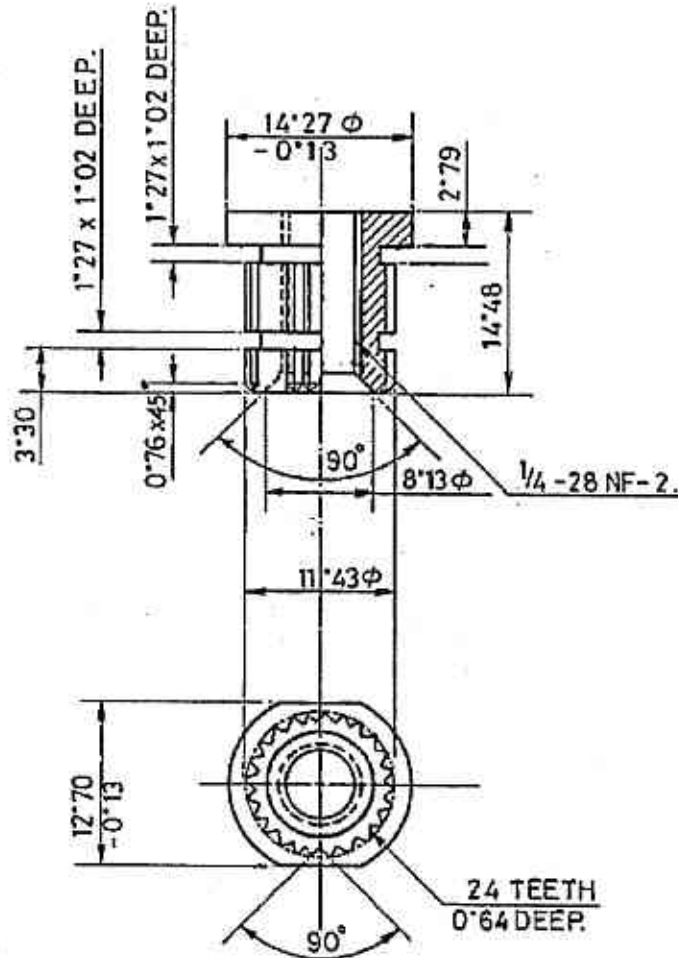
SECTION-BB

DATE: 22-4-22

ASSESSMENT

FOR EXPLANATION OF DETAILS WHEREVER NOT SPECIFIED,
REFER D.D. NOTE SHEET No.3 (LATEST ISSUE)

DIMENSIONS IN ONE DECIMAL PLACES ±0.4 mm



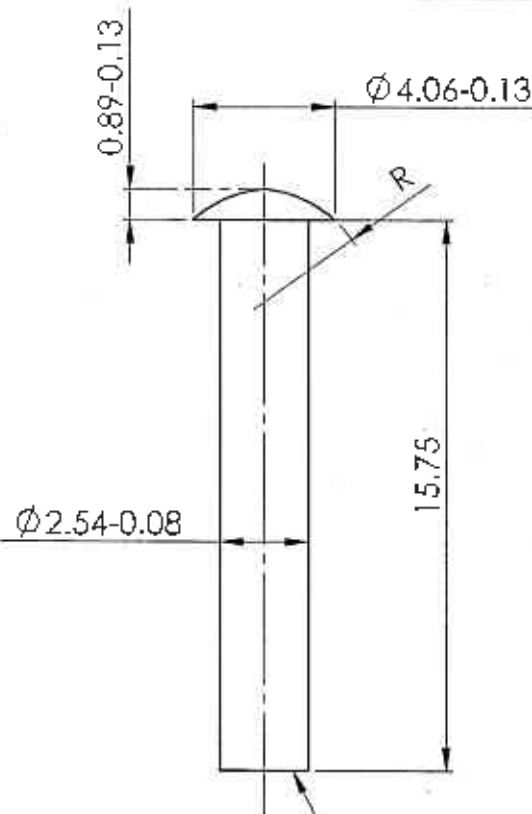
UN CONTROLLED COPY
CERTIFIED CORRECT COPY OF APPROVED
DRAWINGS AT THIS DATE. 10/5/22
DESIGN & DRAWING OFFICE,
ORDNANCE FACTORY, TIRUCHIRAPPALLI -620 016

Material: IS:5517-1993 DESIGN. 30C8		DWG Details		SUB: BUSHING PISTOL GRIP SCREW	
Alt. Material:	DRAWN CHECKED	SIGN <i>Amr</i>	DATE 17-3-22	FOR: GRIP PISTOL SUB-ASSY.(POLYMER)	Do not scale Drawing
Hardness:	HOS/D&DO Div. Officer Prodn	<i>P. Kish</i>		PROJ.: 7.62 mm 1A1	
Finish: PHOSPHATE TO SPECN. ISS:0445-01- 1988 CLASS L OIL FINISH	Div. Officer QC Div. Officer DDO		<i>S. K</i>	Design Ref 1005-001616 (ICR 1304)	QPG -
				DWG. No.: 27P 6512	
				ORDNANCE FACTORY TIRUCHIRAPPALLI-16.	
				Wt. (Appx)	gm
				SHEET: 1 OF 1	

FOR EXPLANATION REFER D.D.NOTE SHEET No.3 (LATEST ISSUE)

NOTE:

WHERE TOLERANCES ARE NOT SHOWN,
 DIMENSIONS IN WHOLE NUMBER ± 1.27 mm
 DIMENSIONS IN ONE DECIMAL PLACES ± 0.4 mm
 DIMENSIONS IN TWO DECIMAL PLACES ± 0.13 mm



THIS END TO BE RIVETED ON ASSY.

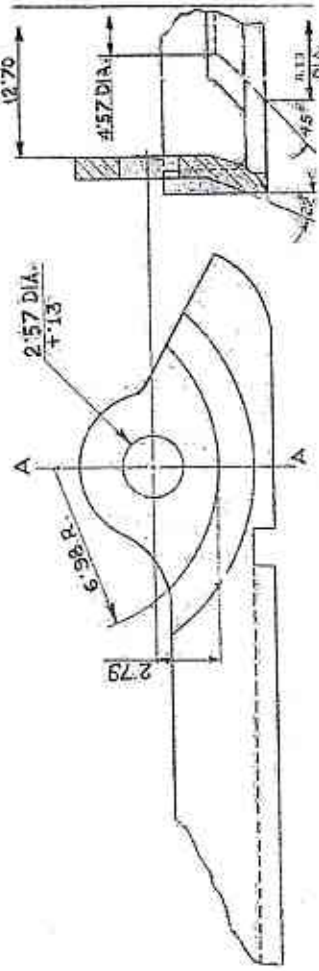
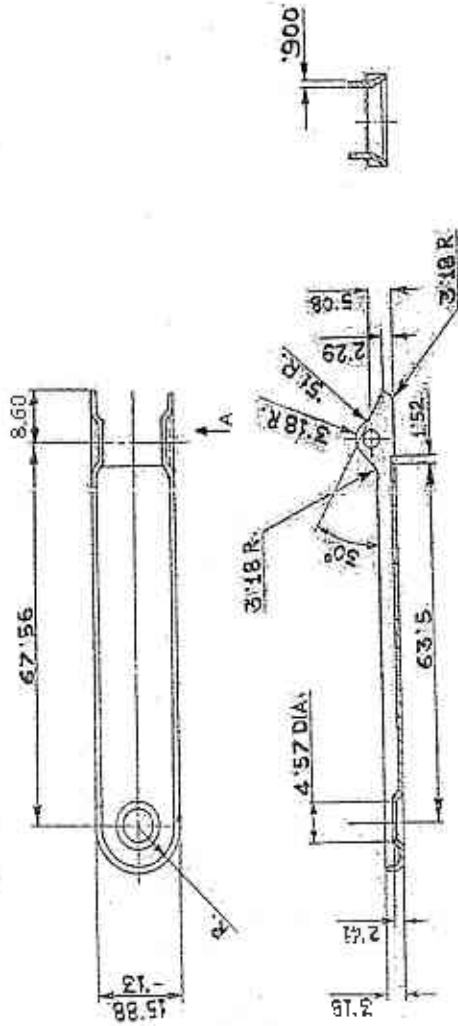
UN CONTROLLED COPY
 CERTIFIED CORRECT COPY OF APPROVED
 DRAWINGS AT THIS DATE 10/5/22

DESIGN & DRAWING OFFICE,
 ORDNANCE FACTORY, TIRUCHIRAPPALI - 620 016.

Material: IS:1673-1984 GRADE-2		DWG Details		SUB: PIN HINGE GUARD TRIGGER	
		3rd Angle	SIGN	DATE	
All. Material:	DRAWN	<i>APR</i>	17-3-22	FOR: GUARD, TRIGGER ASSY. (POLYMER)	
	CHECKED	<i>[Signature]</i>		PROJ.: 7.62 mm 1A1	Do not scale Drawing
Hardness:	MOS/D&DO	<i>[Signature]</i>		Design Ref 5315-001768 [ICR 1374]	
	Div. Officer Prod'n			DWG. No.: 27P 6521	A4 QPG -
Finish: PHOSPHATE TO SPECN. JSSD465-01: 1988 CLASS L OIL FINISH	Div. Officer OC			ORDNANCE FACTORY TIRUCHIRAPPALI-16.	
	Div. Officer DDO	<i>[Signature]</i>		Wt. (Appx) gm	SHEET: 1 OF 1

FOR EXPLANATION REFER D.D. NOTE SHEET No.3. (LATEST ISSUE)

6 5 4 3 2 1



UN CONTROLLED COPY
 CERTIFIED CORRECT COPY OF APPROVED
 DRAWINGS AT THIS DATE. 10/5/82
 DESIGN & DRAWING OFFICE,
 ORDNANCE FACTORY, TIRUCHIRAPPALLI-620 016

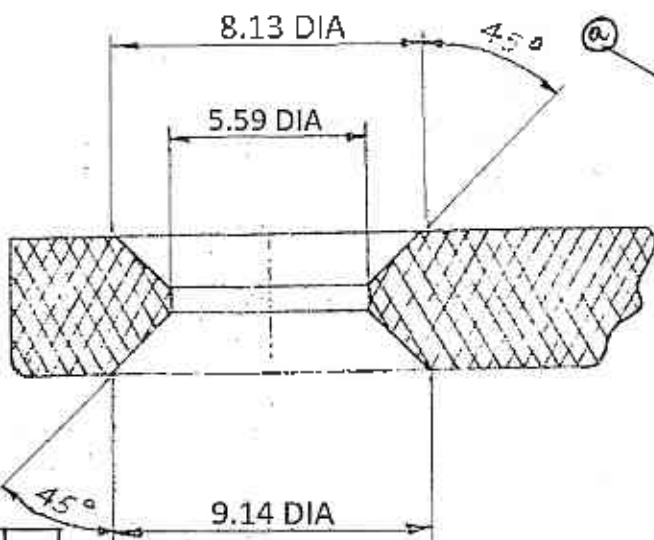
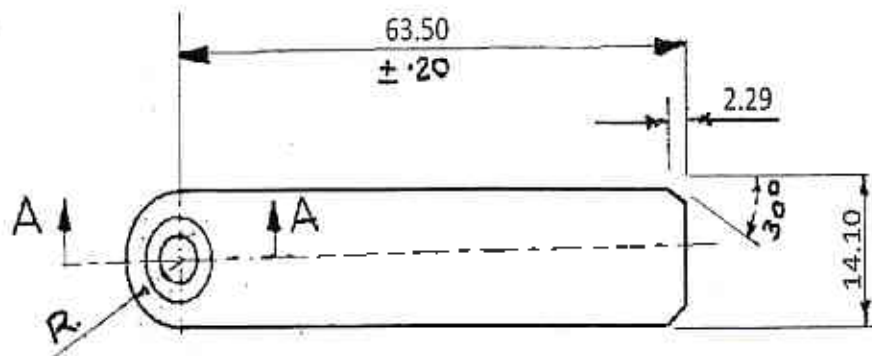
ALT. MATERIAL:
 IS:513-1986 TEMPER DESIGN SKIN PASSES OR ANNEALED GRADE 'DD'

SECTION A-A

ENLARGED VIEW IN DIRECTION OF ARROW 'A'

Material: IS:1449 PT.1 1983 CS-3 SEC-2	DRAWN CHECKED	SIGN <i>[Signature]</i>	DATE 17/3/20	SUB: COVER PISTOL GRIP		Do not scale Drawing
				FOR: GUARD, TRIGGER ASSY (POLYMER)		All Dimensions are in mm
Alt. Material:	HOS/D&DO	<i>[Signature]</i>		PROJ.: 7.62 mm 1A1	Design Ref 1005-001620 (ICR 1375)	
Hardness:	Div. Officer	<i>[Signature]</i>		DWG. No.: 27P 6522	A4	QPG -
Finish PHOSPHATE TO SPECN ASS.046501: 1988 CLASS L OIL FINISH	QC	<i>[Signature]</i>		ORDNANCE FACTORY TIRUCHIRAPPALLI-16.		Wt. (A.P.P.M.) SHEET: 1 OF 1
	DDC	<i>[Signature]</i>				gm

6 5 4 3 2 1



UN CONTROLLED COPY
 CERTIFIED CORRECT COPY OF APPROVED
 DRAWINGS AT THIS DATE: 10/15/22
 DESIGN & DRAWING OFFICE
 ORDNANCE FACTORY, TIRUCHIRAPPALLI-16

FOR COLOUR SHADE ONLY:
 COLOUR SHADE SHOULD CONFORM
 TO NO.489 LEAF BROWN AS SHOWN
 IN SPECIFICATION IS:5-1994

GENERAL TOLERANCE-0.13 WHERE NOT SHOWN
FOR EXPLANATION REFER D.D.NOTE SHEET
No.3 (LATEST ISSUE)

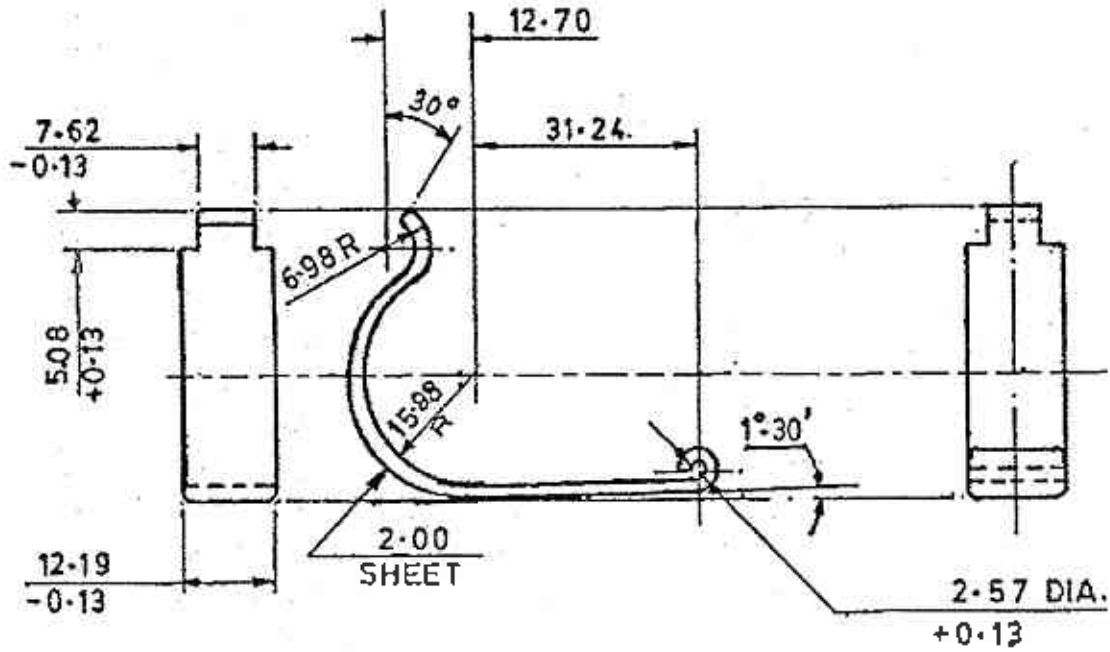
MATERIAL:
 30% GLASS FIBRE REINFORCED POLYAMIDE
 (NYLON 66 - PA 66)
FILLER CONTENT:
 NOT LESS THAN 28%
NOTE:
 MELTING POINT NOT LESS THAN 200°C
 BLACK MATT FINISH

ENLARGED PART SECTION AT "AA"

21/002/2022
 dt: 22-4-22
 AMEN DATE
 SIGN DATE

Material:			DWG Details		SUB: FILLER PIECE (POLYMER)	
	3rd Angle		SIGN	DATE	FOR: GUARD, TRIGGER ASSY. (POLYMER)	
Alt. Material:	DRAWN		A. K. S.	17/22	PROJ.: 7.62 mm 1A1	
	CHECKED				Design Ref 1005-006563	
Hardness:	HOS/D&DO		P. J. S.		All Dimensions are in mm	
	Div. Officer Prodn				DWG. No.: 27P 6523*	
Finish	Div. Officer QC				A4 QPG -	
	Div. Officer DDO		G. K. S.		ORDNANCE FACTORY TIRUCHIRAPPALLI-16.	
					Wt. (approx) gm SHEET: 1 OF 1	

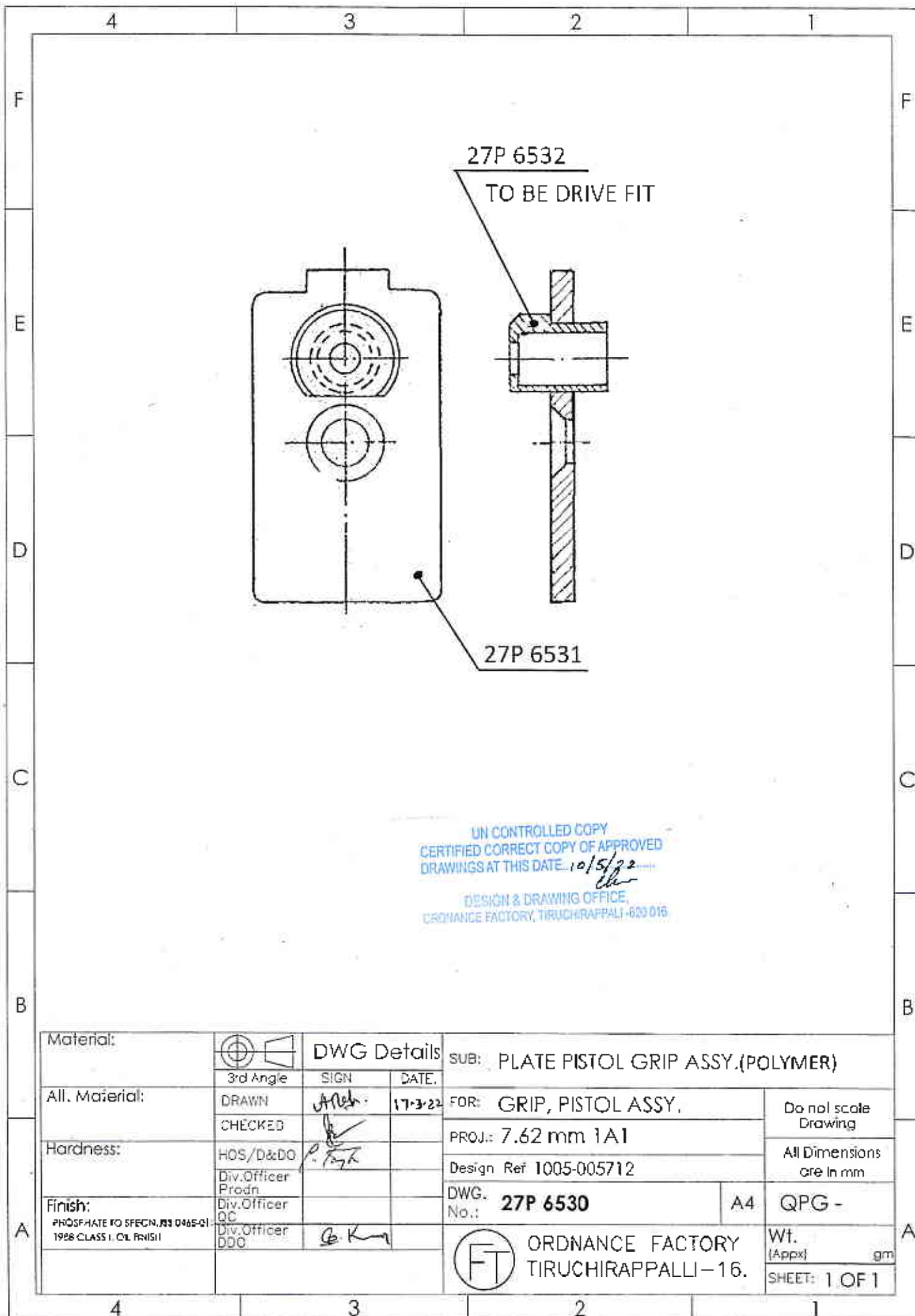
NOTE:
 FOR SPECIFICATION LATEST ISSUE SHOULD BE FOLLOWED
 FOR EXPLANATION OF DETAILS WHEREVER NOT SPECIFIED
 REFER D.D.NOTE SHEET No.3 (LATEST ISSUE)



UN CONTROLLED COPY
 CERTIFIED CORRECT COPY OF APPROVED
 DRAWINGS AT THIS DATE. 10/5/22
 DESIGN & DRAWING OFFICE,
 ORDNANCE FACTORY, TIRUCHIRAPPALLI-620 016

FINISH: PHOSPHATE TO SPECN.JSS:0465-01:1988 CLASS I,
 OIL FINISH PAINT RFU FINISHING AMMUNITION STOVING
 BLACK SPRING FOR SMALL ARMS TO SPECN.JSS-8010-37

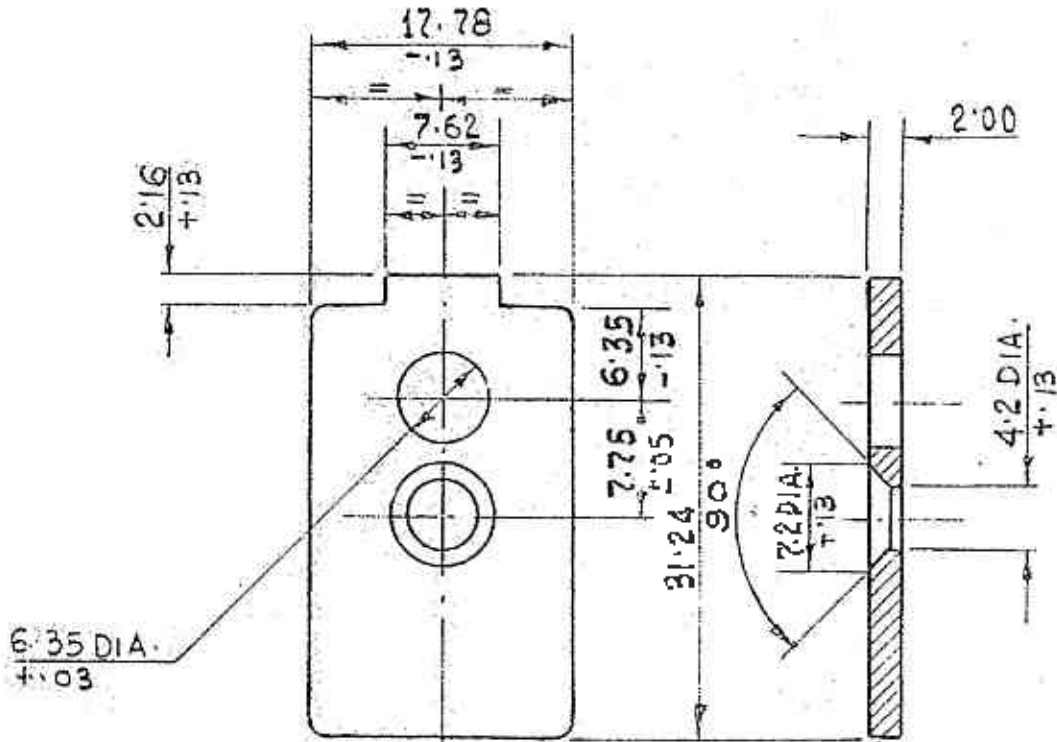
Material: S:513-2008 DESIGN.CR3	 3rd Angle	DWG Details		SUB: GUARD,TRIGGER	
		SIGN	DATE		
All. Material:	DRAWN	<i>A. K.</i>	17-3-22	FOR: GUARD,TRIGGER ASSY. (POLYMER)	
	CHECKED	<i>[Signature]</i>		Do not scale Drawing	
Hardness:	HOS/D&DO	<i>P. Singh</i>		PROJ.: 7.62 mm 1A1	
	Div. Officer Prasn			Design Ref 1005-001622 (ICR 1218)	
Finish:	Div. Officer QC			DWG. No.: 27P 6524	A4
	Div. Officer DDO	<i>G. K.</i>		QPG -	
				ORDNANCE FACTORY TIRUCHIRAPPALLI-16.	
				Wt. (Appx) gm SHEET: 1 OF 1	



UN CONTROLLED COPY
 CERTIFIED CORRECT COPY OF APPROVED
 DRAWINGS AT THIS DATE. 10/5/22
 DESIGN & DRAWING OFFICE,
 ORDNANCE FACTORY, TIRUCHIRAPPALI - 620 016

Material:		DWG Details		SUB: PLATE PISTOL GRIP ASSY.(POLYMER)	
	3rd Angle	SIGN	DATE		
All. Material:	DRAWN	<i>Arish</i>	17-3-22	FOR: GRIP, PISTOL ASSY.	Do not scale Drawing
	CHECKED	<i>[Signature]</i>		PROJ.: 7.62 mm 1A1	
Hardness:	HOS/D&DO	<i>P. Singh</i>		Design Ref 1005-005712	All Dimensions are in mm
	Div. Officer Prodn			DWG. No.: 27P 6530	A4 QPG -
Finish: PHOSPHATE TO SPECN. 93 0465-01 1926 CLASS I, CL FINISH	Div. Officer QC			ORDNANCE FACTORY TIRUCHIRAPPALI-16.	Wt. (Appx) gm
	Div. Officer DDO	<i>G. K</i>			SHEET: 1 OF 1

NOTE:
 WHERE TOLERANCES ARE NOT SHOWN,
 DIMENSIONS IN WHOLE NUMBER ± 1.27 mm
 DIMENSIONS IN ONE DECIMAL PLACES ± 0.4 mm
 DIMENSIONS IN TWO DECIMAL PLACES ± 0.13 mm



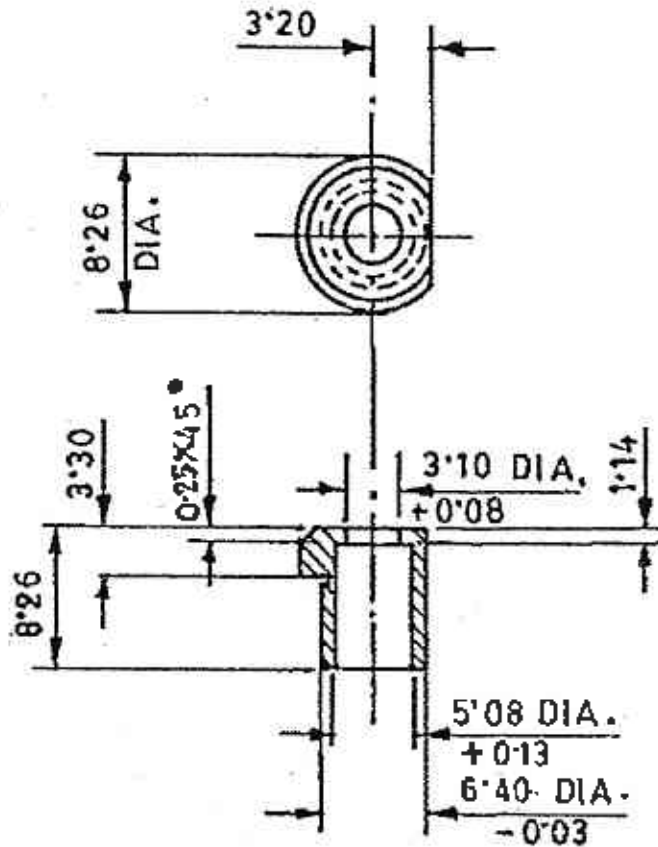
UN CONTROLLED COPY
 CERTIFIED CORRECT COPY OF APPROVED
 DRAWINGS AT THIS DATE. *10/5/20*
 DESIGN & DRAWING OFFICE,
 ORDNANCE FACTORY, TIRUCHIRAPPALI - 620 016.

Material: IS:513-2008 DESIGN,CR2	 3rd Angle	DWG Details		SUB: PLATE PISTOL GRIP (POLYMER)	
		SIGN	DATE	FOR: PLATE, PISTOL GRIP ASSY.(POLYMER)	Do not scale Drawing
Alt. Material:	DRAWN	<i>ADK</i>	17-3-21	PROJ.: 7.62 mm 1A1	
	CHECKED	<i>[Signature]</i>		Design Ref 1005-005713	
Hardness:	HOS/D&DO	<i>P. [Signature]</i>		DWG. No.: 27P 6531	A4 QPG -
	Div. Officer Prodn			ORDNANCE FACTORY TIRUCHIRAPPALLI-16.	Wt. (Appx) gm
Finish:	Div. Officer QC				SHEET: 1 OF 1
	Div. Officer DWO	<i>[Signature]</i>			

FOR EXPLANATION OF DETAILS WHEREVER NOT SPECIFIED,
REFER D.D. NOTE SHEET No.3 (LATEST ISSUE)

DIMENSIONS IN ONE DECIMAL PLACES ± 0.4 mm

ACTUAL SIZE

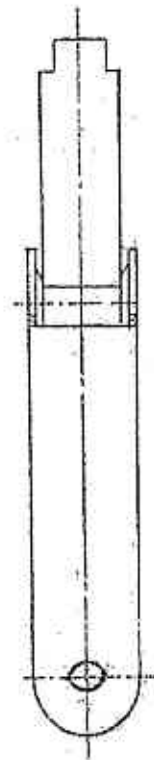
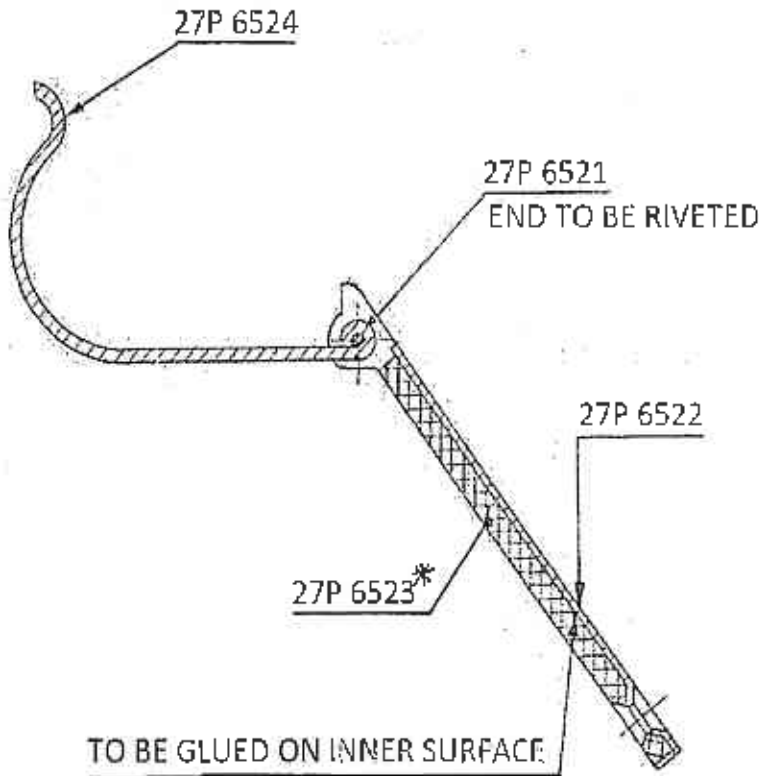


UN CONTROLLED COPY
CERTIFIED CORRECT COPY OF APPROVED
DRAWINGS AT THIS DATE 10/5/22

DESIGN & DRAWING OFFICE,
ORDNANCE FACTORY, TIRUCHIRAPPALLI - 620 016.

Material: IS:1673-1984 Gr.2		DWG Details		SUB: BUSHING TRIGGER SPRING PLUNGER		
		3rd Angle	SIGN	DATE	FOR: PLATE PISTOL GRIP ASSY.	Do not scale Drawing
Alt. Material:	DRAWN	<i>ATU</i>	17-3-22	PROJ.: 7.62 mm 1A1	All Dimensions are in mm	
	CHECKED	<i>[Signature]</i>		Design Ref 1005-001625 (ICR 1372)		
Hardness	HOS/D&DO	<i>P. [Signature]</i>		DWG. No.: 27P 6532	A4	QPG -
Finish ON ASSY.	Div. Officer Prodn				ORDNANCE FACTORY TIRUCHIRAPPALLI-16.	Wt. (Appx) gm
	Div. Officer QC					
	Div. Officer DDO	<i>[Signature]</i>				

FOR EXPLANATION OF DETAILS WHEREVER NOT SPECIFIED,
REFER D.D. NOTE SHEET No.3 (LATEST ISSUE)



UN CONTROLLED COPY
CERTIFIED CORRECT COPY OF APPROVED
DRAWINGS AT THIS DATE 30/4/22
DESIGN & DRAWING OFFICE,
ORDNANCE FACTORY, TIRUCHIRAPPALLI-620 016.

© DAI 002/2022 dt: 22.4.22	MDA -
AMENDMENT	SIGN & DATE

FILLER PIECE TO 27P 6523 EITHER TO BE MANUFACTURED OR PROCURED FROM TRADE ALONG WITH GRIP PISTOL SUB-ASSY. 27P 6510 OR SEPERATELY

Material:		DWG Details	sub: GUARD, TRIGGER ASSY. (POLYMER)	
All. Material:	DRAWN	SIGN	DATE	Do not scale Drawing
	CHECKED	<i>A. Sub.</i>	17-3-22	
Hardness	HCS/D&DO	<i>P. Sub.</i>		All Dimensions are in mm
	Div. Officer Prodn			
Finish	Div. Officer CC			A4 QPG -
	Div. Officer BDO	<i>A. Kumar</i>		
				WT. (Approx) gm
				SHEET: 1 OF 1



ORDNANCE FACTORY
TIRUCHIRAPPALLI-16.