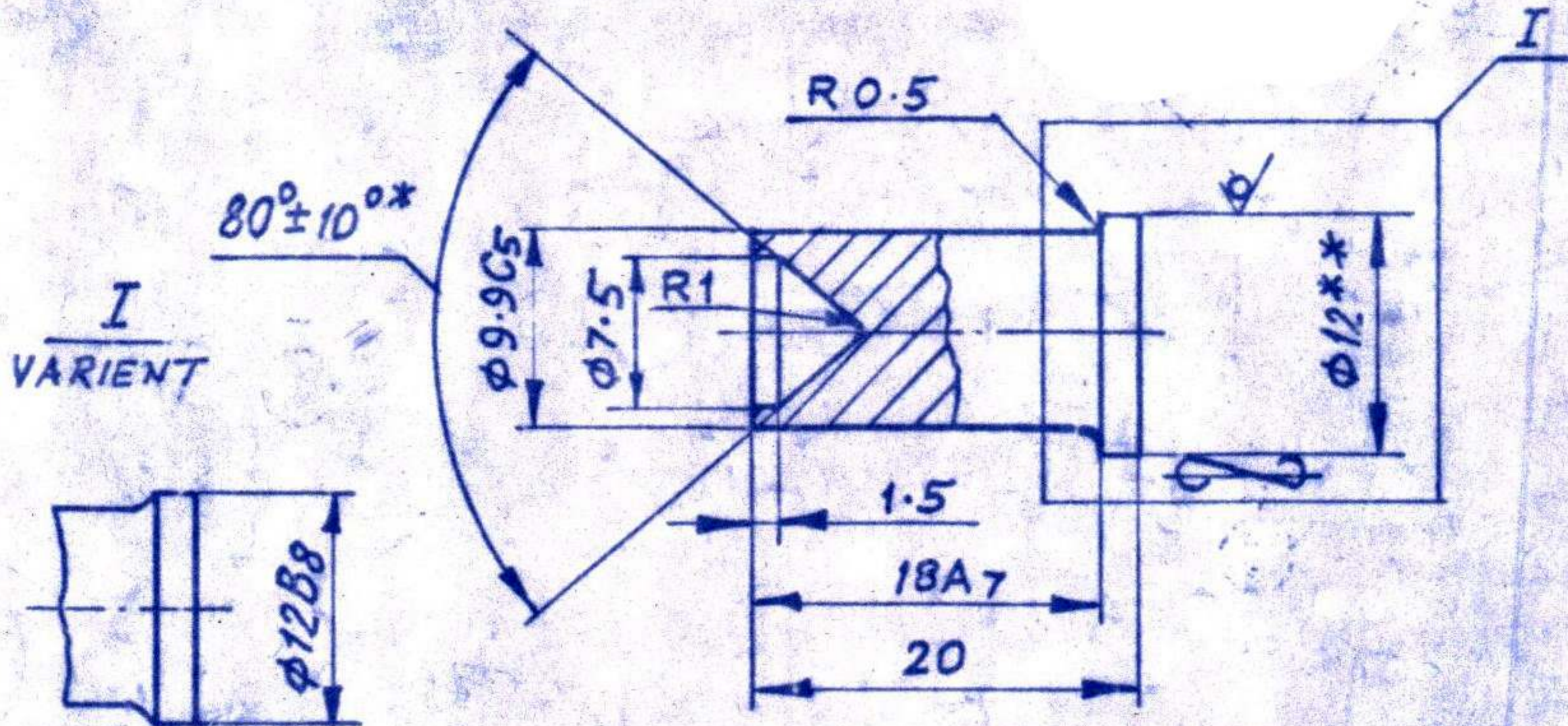


025

4-025998

ECHA

Rz80  
✓(✓)



1. Steel round 35 x and 45 x as per GOST 4543-71 is permitted.
- 2.\* Dimensions are ensured by tooling.
- 3.\*\* Dimensions are for reference.
4. Coating Chemical phosphating chromatizing  
Varnish MA-592<sup>(3)</sup> asper OST B-84-1384-76.  
Varnish MA-592 asper Ty 6-10-846-75.  
Varnish  $\phi A$ -582 asper Ty 6-10-1236-77 is permitted.  
ALTERNATIVELY VARNISH TO SPECN. JSS 1-63-15 OR  
JSS 8010-28 CAN BE USED.
5. Remaining technical requirements are asper OST B-84-485-71.

16.2.95	DC. 35913-A	ALT. MATERIAL UP DATED.	ZONE	SIG.
30.7.92	D.C. 35357-A.	IN NOTE NO. 4 ALT. <del>MATER.</del> VARNISH SPECN. & IN MAT. COL. ALT. MATL. ADDED.	RHSP	D.O
2-7-90	D.C. 34909-A	MASS ADDED.	REVISION.	
28.10.05	D.C.I. 33853-A.	DWG. SEALED PROJ.		
R NO.	DATE	AUTHORITY.		

ALT. MATL.: TO SPECN BS 970 PART I, 1991 708 M40, IN COLD DRAWN & SOFTENED CONDITION WITH HARDNESS 250 HV MAX.

APPD. *[Signature]*  
FOR C.I. (A)

AHSP.  
C.I. (A) KIRKEE.

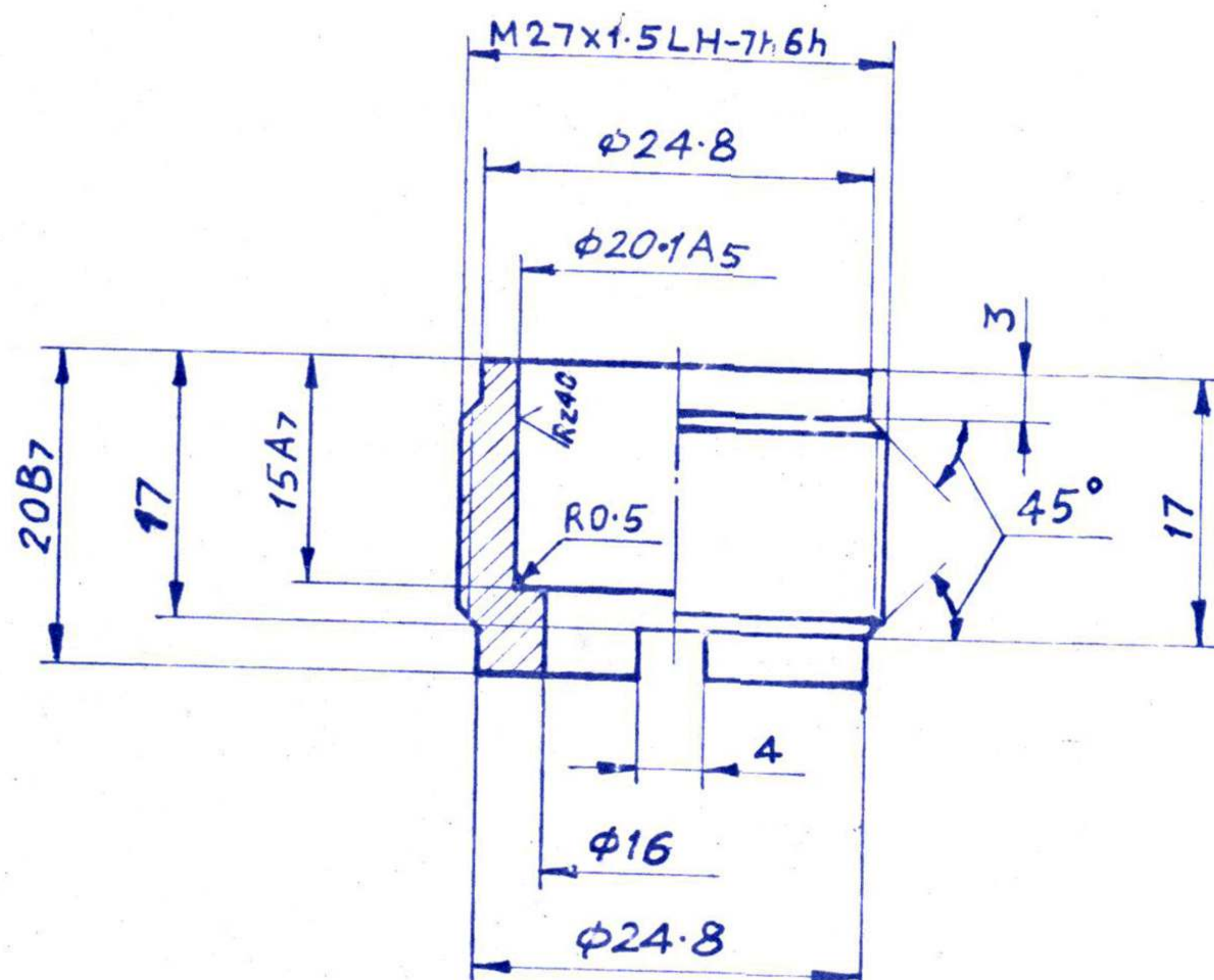
MASS: 0.01 kg	35M14M
4-025998	025
AXLE PIN	
12-5 ROUND GOST 7417-75	
40X GOST 4543-71.	
SCALE: 2:1	

036

4-025998

ЕЧКА

Rz80/√(✓)



1. Steels 30,40 asper GOST 1050-74.
2. Coating Chemical phosphating chromating  
Varnish MA-592(3) OST B-84-1384-76.  
  
Varnish MA-592 Ty 6-10-846-75.  
  
Varnish M-582 as per Ty 6-10-1236-77 is permitted.  
ALTERNATIVELY VARNISH TO SPECN. JSS8010-28 OR  
JSS.1-63-15 MAY BE USED.
3. Remaining technical requirements are asper OST B-84-485-71.

R NO	DATE	AUTHORITY	REVISION	ZONE	RHSP.	D.O	SIG.
11-8-05	DC 37003-A	UNDER MATERIAL SPECN AMENDED					
30-7-92	D.C. 35357-A	IN NOTE NO 2 ALT. VARNISH SPECN. & IN MATL. COL. ALT. MATL. ADDED.					
2-7-90	DC 34909-A	MASS ADDED.					
28-10-85	D.C.I. 33853-A	DRG. SEALED PROV.					

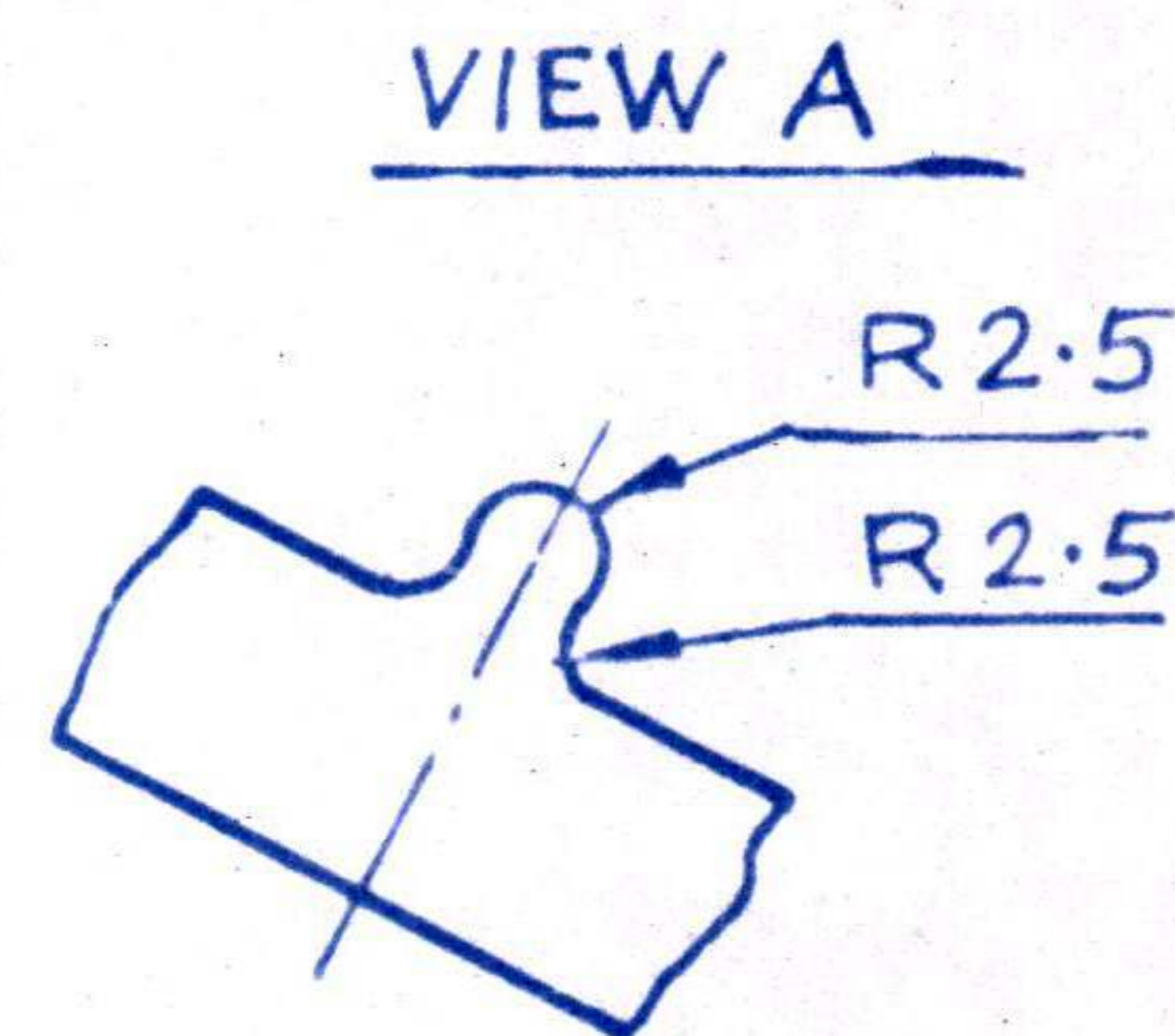
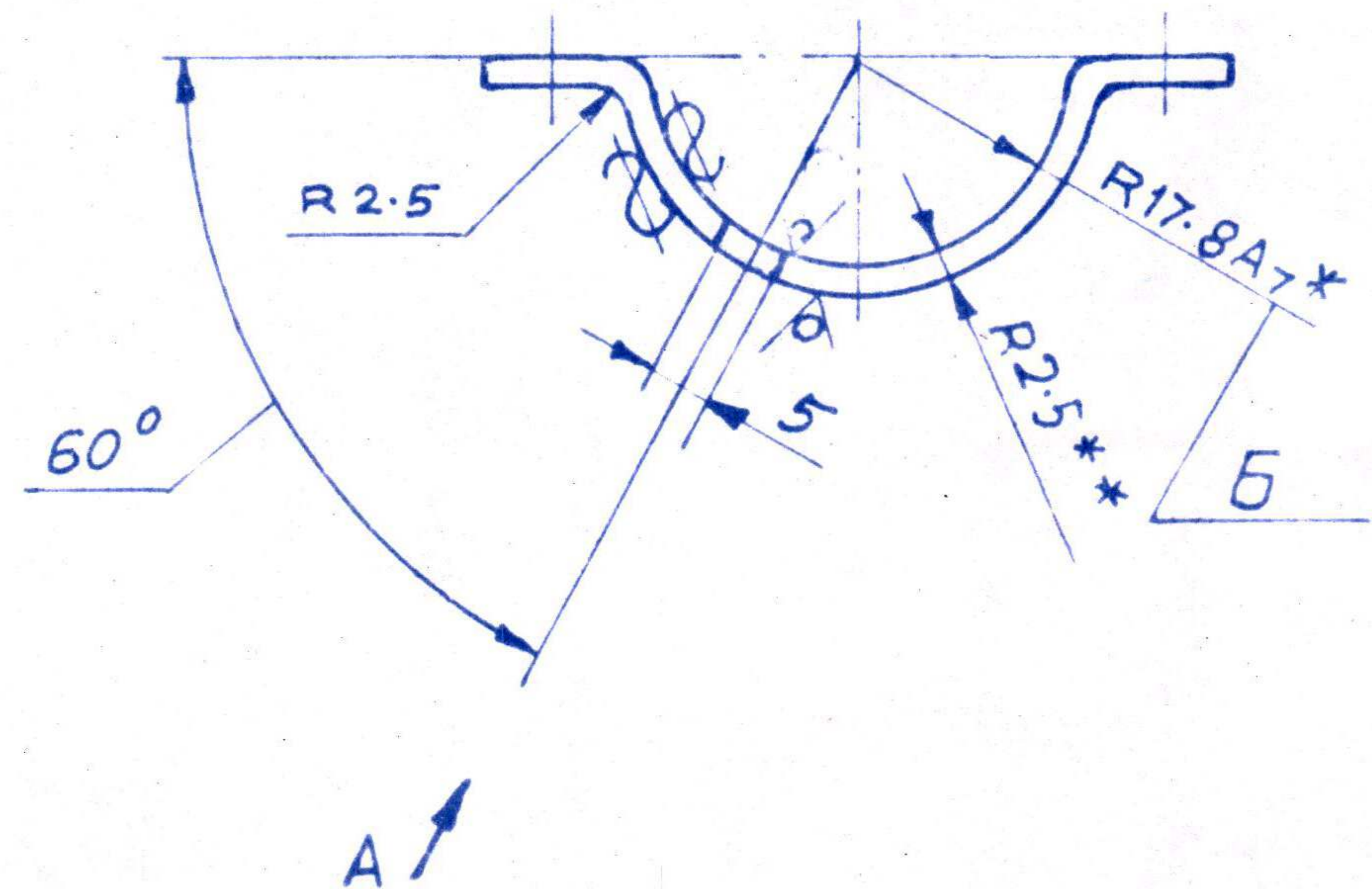
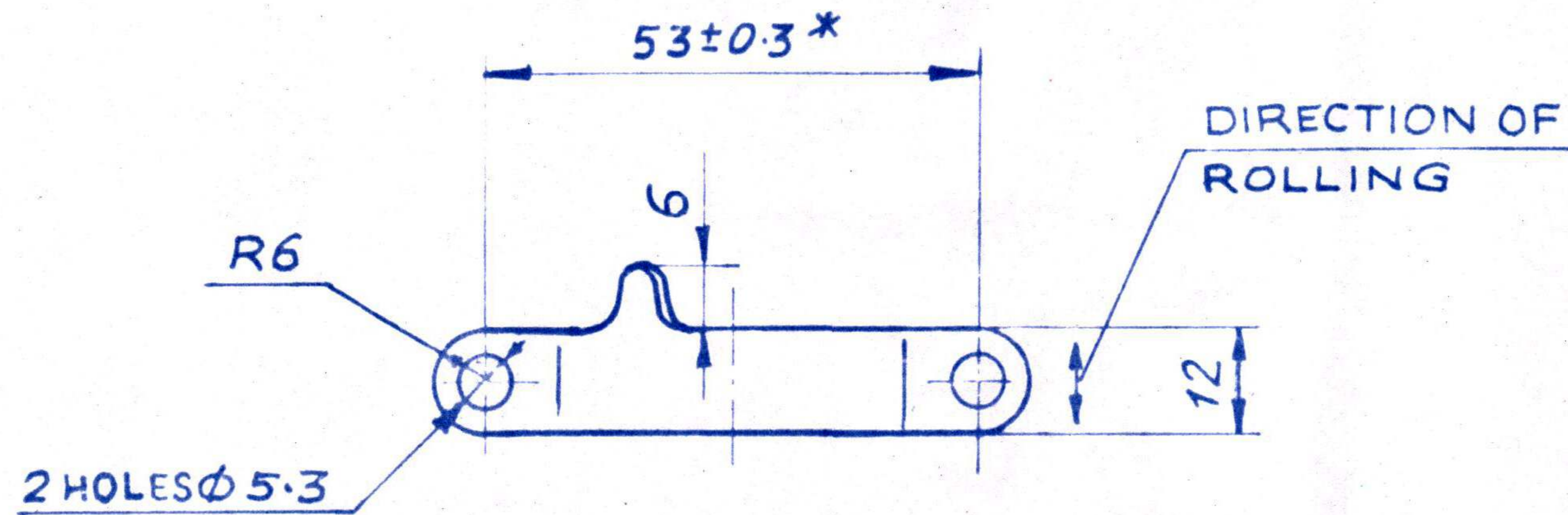
MASS: 0.036 kg	35K14M
4-025998	036
TRACER NUT	APPD.: Kool FOR C.I. (A)
STEEL 20 GOST 1050-74	RHSP. C.I. (A) KIRKEE
ALT. MATL.: - B5970-PT-3 1991 OTOM20, OTOM30, OTOM40.	SCALE - 2:1

076

866970-4

Rz 80/  
√(✓)

ECKD



1. Sheets of steel 08; 08KП; 10KП asper GOST 16523-70; strip 08, 08KП, 10KП-2.5 asper GOST 503-71; smooth or extra smooth.
2. ANNEAL
- 3.\* Dimensions are ensured by tooling.
- 4.\*\* Dimensions are for reference.
5. Bend the semiring asper the dimension 6 in the direction opposite to the cut of development of semiring.
6. Coating Chemical phosphating, chromating  
Varnish MA-592 (3) asper OST B-84-1384-76.  
  
Varnish MA-592 asper Ty 6-10-846-75.  
Varnish П-582 asper Ty 6-10-1236-77 is permitted.  
VARNISH TO SPECN. JSS 8010-28 PERMITTED.
7. Remaining technical requirements are asper OST B-84-485-71.

ALTERNATIVE MATERIAL:-  
STEEL TO SPECN. IS 1079-73D OR IS 513D.

MASS: 0.018 kg	35 K14M
4-025998	076
SEMI RING	
SHEET 5-ПН-25 GOST 199 03-74 ТУ 10 GOST 16523-70	
SCALE-1:1	

R NO	DATE	AUTHORITY	REVISION	ZONE	AHSP, D.O	SIG.	APPD.
	30-7-92	DC 35357-A	ALT. MATERIAL & ALT. VARNISH SPECN. IN NOTE NO 6 ADDED.				
	2-7-90	DC 34909-A	MASS ADDED.				
	28-10-85	DC 133853-A	DRG. SEALED PROV.				
DRG. SEALED:- 28-10-85 (PROV)							
AHSP :- C.I.(A) KIRKEE							