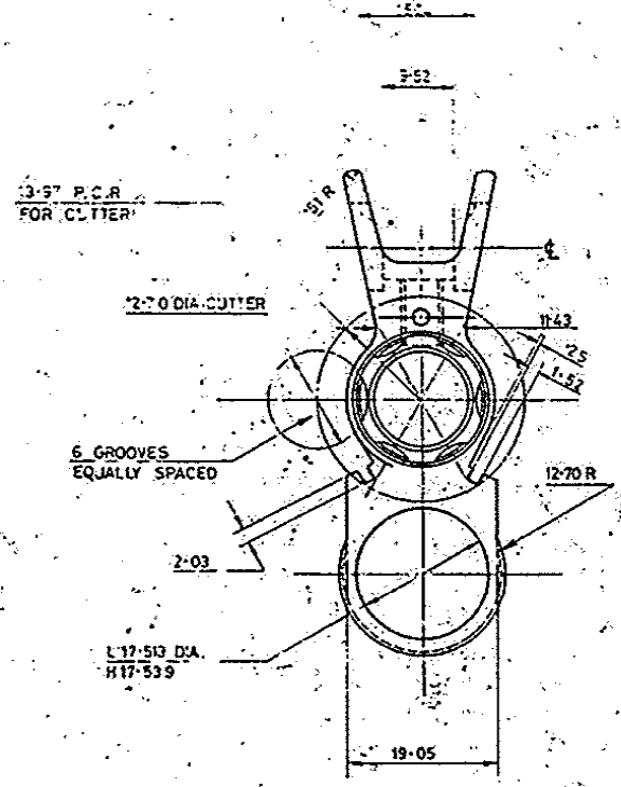
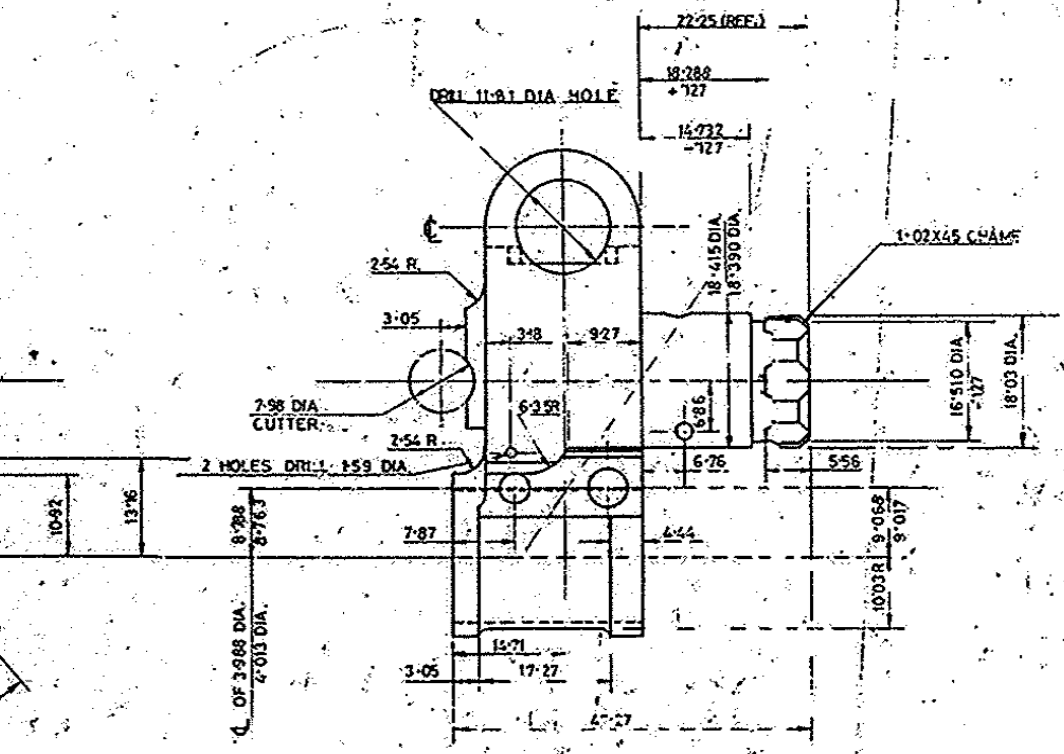
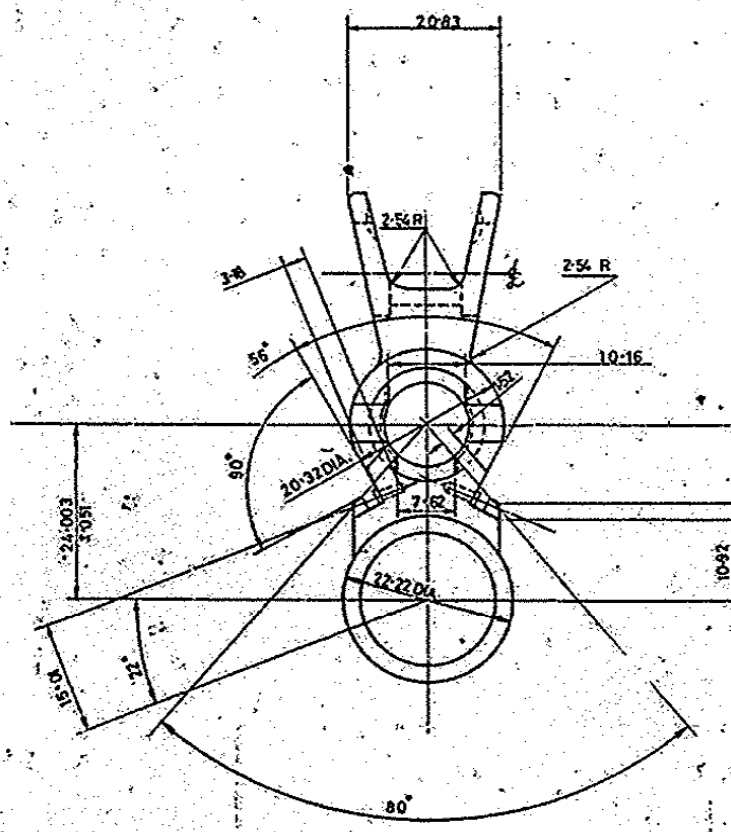
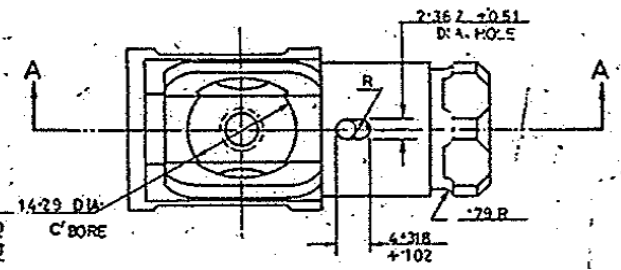


C/BORE OPERATION NECESSARY TO  
ENABLE LOCK NUT TO BE FITTED  
IN CONJUNCTION WITH FORE SIGHT

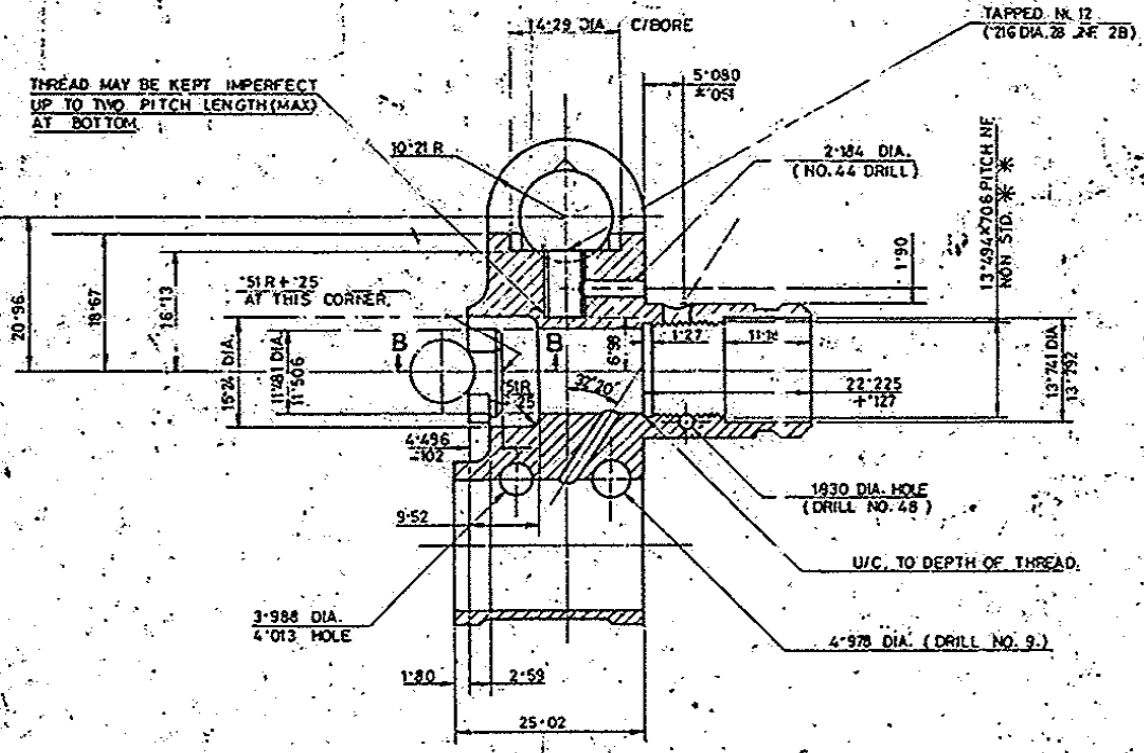


**NOTE:-**  
WHERE TOLERANCES ARE NOT SHOWN  
DIMENSIONS IN WHOLE NUMBERS OR WITH  
ONE DECIMAL PLACE ± 0.27mm  
DIMENSIONS WITH TWO DECIMAL PLACES ± 0.13mm  
FOR EXPLANATION SEE D.D. NOTE SHEET NO.3  
FOR SPECN LATEST ISSUE SHOULD BE FOLLOWED

**MATERIAL**  
S.S. 370 PT.1:1983 SEC.3 G709 M40 S CONDITION  
ALT. MATL.  
BS 370 PT.1:83 SEC.3 G709 M40 S CONDITION.

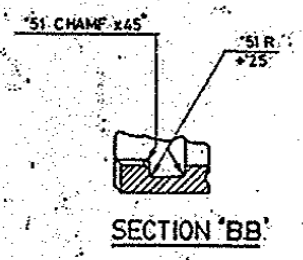
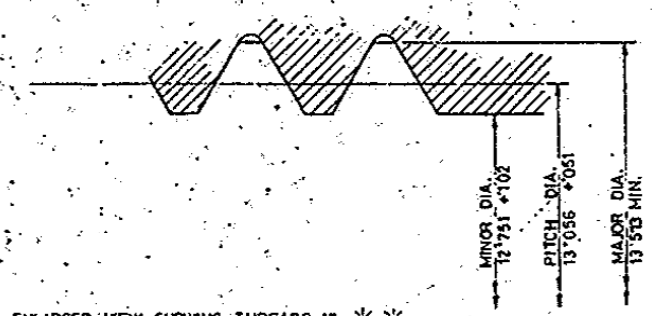
HARDNESS: 240-300 HV(41-47.5HRD)

**MATERIAL:**  
IS: 5517-1993, DESIGN A2GrA  
M02



THREAD MAY BE KEPT IMPERFECT  
UP TO TWO PITCH LENGTH (MAX)  
AT BOTTOM

ENLARGED VIEW SHOWING THREADS AT \*\*



TEND 1878 MAY BE USED  
ICR.1322

26759-SA D6.29.05.15 MATL. AMENDED		AmEND. No. 004/15 dt. 23.8.15		METRIC	
24419-SA	1-7-99	ALT. MATL. AMENDED	DRG. NO.	ASSY. DRG. NO.	1005-00509
24342-SA	22-4-99	MATERIAL AMENDED	DRG. NO.	MATERIAL	AS STATED
22932-SA	5-4-95	MATERIAL AMENDED	DRG. NO.	DIMENSIONS ARE IN MILLIMETRES	
22347-SA	5-11-93	NEGATIVE RE-TRACED AND DRAWING RE-SEALED	DRG. NO.	APPROVED BY 1966	
		PREVIOUS D.C.(I) 14975-SA, 15013-SA, 16217-SA, 17996-SA, 19624-SA, 19839-SA, 21303-SA	DRG. NO.	NEG. RETRACED	
			SCALE	DESIGNER'S MARK	
			SCALE 2:1	ARDE 057/239	
			COPY SEALED D.C.(I)	1005-001510	
			S.G. 1975-SA, CT. 11.1	SCAN	