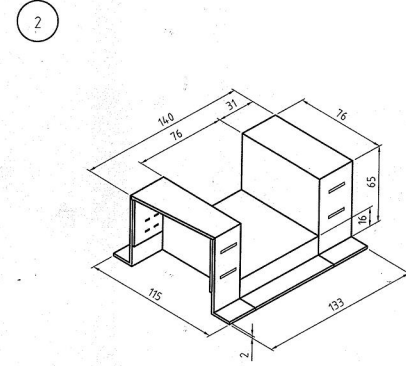
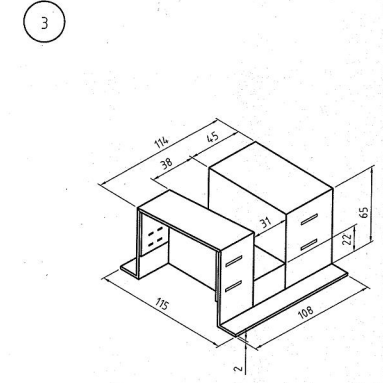


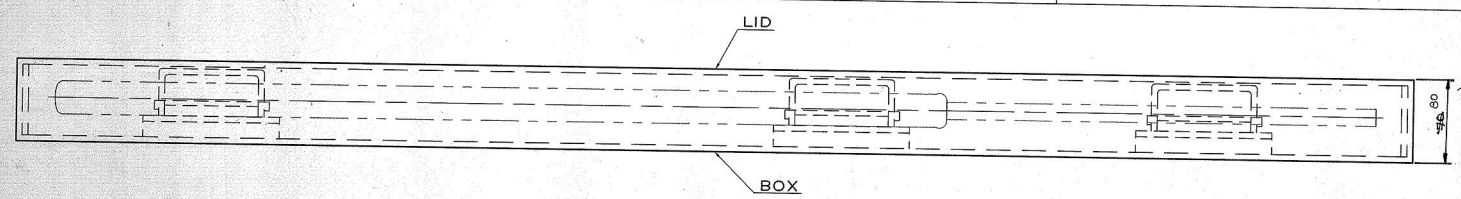
REST FOR STOCK
MADE WITH PAPER CORRUGATED
DOUBLE FACES 2mm. THICK (APPX.)



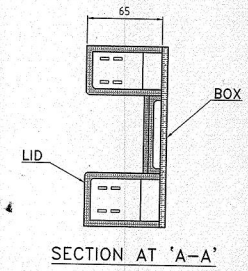
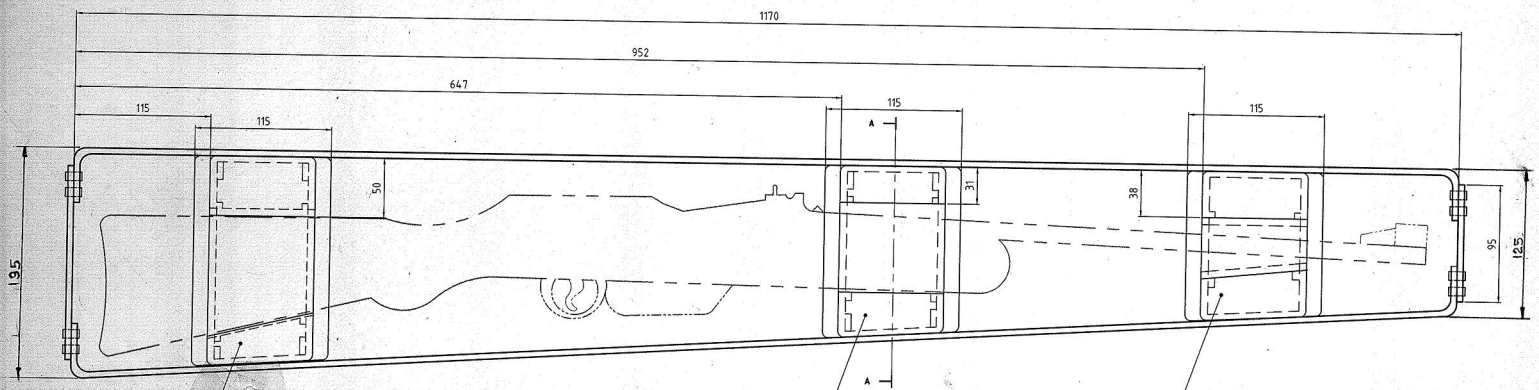
REST FOR FORE-END
MADE WITH PAPER CORRUGATED
DOUBLE FACES 2mm. THICK (APPX.)



REST FOR BARREL
MADE WITH PAPER CORRUGATED
DOUBLE FACES 2mm. THICK (APPX.)



BOX & LID
MADE WITH 5mm. THICK (APPROX) 3 FACES
DOUBLE CORRUGATED PAPER (TOTAL 5 PLY.)



NOTE:-
TO BE CHECKED AFTER ASSEMBLY
USE TEMPLATE

DIMENSIONS ARE IN mm.
IMPORTANT DIMS. MARKED THUS: ϕ
INFORMATION MARKED THUS: \square TO BE MARKED ON
UN TOLERATED DIMS. ASPER IS: 2102(MEDIUM)

PART NO.	DESCRIPTIONS	AS ABOVE			REMARKS
		NO. OFF.	MATERIAL	TREATMENT	
1834	SIGNATURE & DATE				SCALE 1:2
	TRACED	SUB: CARD BOARD PACKING CASE			STORE DRG. NO. 29P 0170
	DRAWN	FOR: .315" SPORTING RIFLE			OPERATION NO. ---
	CHECKED	DRG. NO. BELSKETCH NO. 324			
	CHK/DADD	DRG. NO. TEND. NO. 1834			
	FORSEER / PRODR	DRG. NO. 1834			
	OFFSEER / DADD	ORDNANCE FACTORY THIRUCHIRAPPALLI-16			SHEETS: 1
	AMENDMENTS & DATE	NO. 1	DATE 1/2006		SHEET NO.: 1