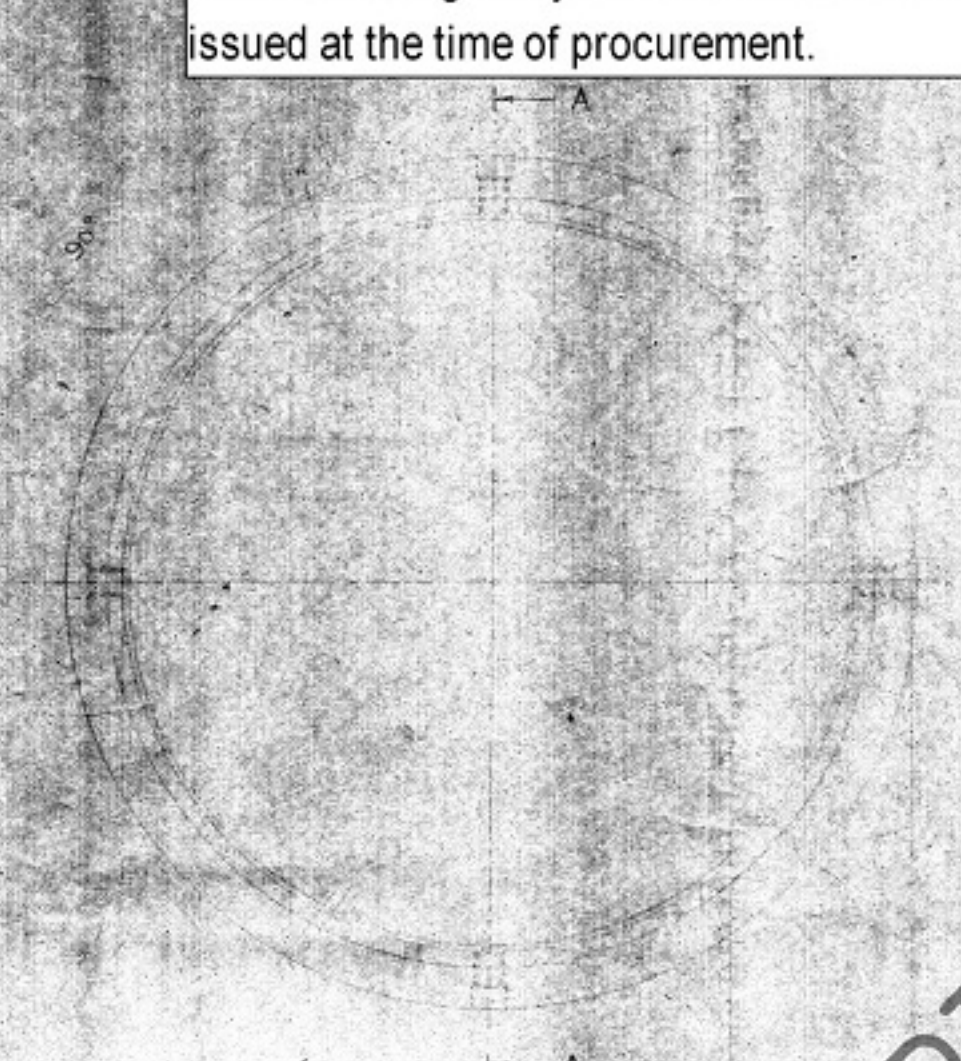


DRAWING CONVENTIONS CONFORM TO IS: 1996
 UNLESS OTHERWISE STATED
 UNITS ARE IN MM
 CLASS TO IS: 1502
 ARDE 2122

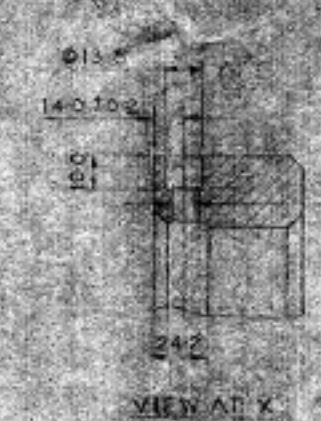
Note:-These Drawings are only for reference.
 Actual drawings may be different and shall be
 issued at the time of procurement.

No part of these drawings may be
 reproduced in any form without
 prior permission in writing of OFM.

INDICATIVE DRAWINGS



- NOTES
1. ALL SHARP EDGES AND BURRS ARE TO BE REMOVED.
 2. SCREW THREADS TO CONFORM TO SPEC IS 4218 UNLESS OTHERWISE STATED.
 3. TOLERANCES GIVEN IN DEGREES ± 0.30°
 4. RADIUS UNLESS STATED OTHERWISE 1.5 MATCHES AT 1
 5. AFTER PHOSPHATING APPLY TWO COATS OF PAINT FINISHING (AIR DRYING) TO BE THE DEEP BRIGHT GREEN TINT NO 242 TO CONFORM TO IS: 5. ALL SCREW THREADS AND MATING SURFACES MARKED THIS WAY ARE TO BE FREE FROM PAINT.



Received note P. H. ...
 No. 1018, P.P. Dt. 25/6/19

DATE	AUTHORITY	SPEC. BY	CHKD. BY	TRD.	COMP.	ASST. DRG. AUTH.
			CD	SCALE		DESIGN AUTHORITY
			APPROVED	PST. MASS		ARDE PUNE - 413 021
				DATE		

BASE TRANSIT

ARDE 2122
 GET No. 15 15/11/19
 PART No.
 D.S. CAT No.
 A.H.S.F.