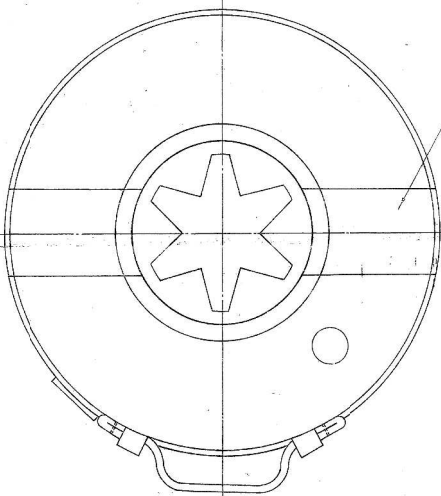
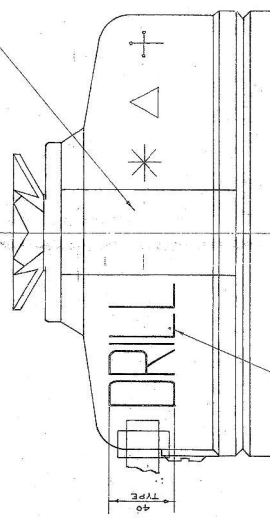


**EMPTY MARKING ON BODY IN WHITE IN 13 TYPE**

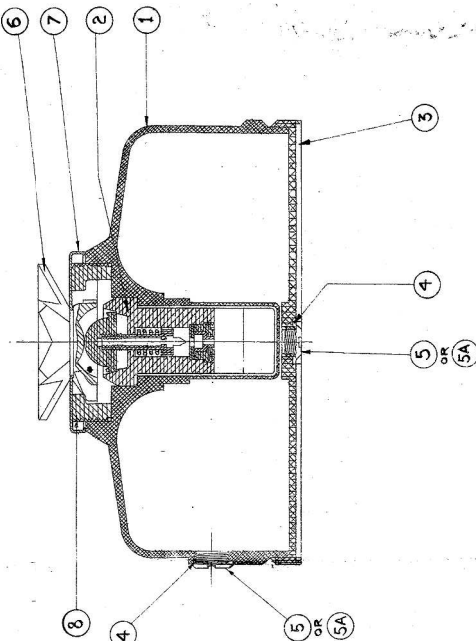
- \* CONTRACTOR'S INITIALS OR RECOGNISED TRADE MARK
- + DATE OF MANUFACTURE
- △ LOT NO.



ONE BAND 40 WIDE AS SHOWN  
 TO BE PAINTED IN WHITE  
 CROWN IN WHITE ENTIRE TOP SURFACE  
 OF CROWN TO BE PAINTED WHITE.



TO BE STENCILLED IN WHITE



ITEM NO.	DESCRIPTION	DESIGNER'S REF.	PART NO.	PER
1	BODY	CIA/AMN/1933 DET.1	ITX 475A	1
2	FUZE DRILL MINE A/T 16 ND	CIA/AMN/1984	IQX 65A	1
3	LID	CIA/AMN/1333 DET.2	ITX 248	1
4	WASHER RUBBER	ARDE 742 DET.8	ITX 67	2
5	PLUG	CIA/AMN/1933 DET.3	ITX 249	2
5A	PLUG (ALTERNATIVE)	CIA/AMN/1973	ITX 257	2
6	CROWN	CIA/AMN/1933 DET.4	ITX 250	1
7	CUP	ARDE 742 DET.16	ITX 71	1
8	RING	CIA/AMN/1933 DET.5	ITX 251	1
9	WELDING ROD, 3-2 P.03mm DIA. X 1/8" LONG.			1

**\* NOTES:-**

- 1) CONTRACTOR TO SUPPLY THE WELDING RODS REQUIRED FOR WELDING THE MINE BODY AND LID AFTER FILLING.
- 2) THE WELDING ROD SHOULD BE MANUFACTURED FROM THE SAME ACCEPTED RAW MATERIAL AS USED FOR MINE BODY AND LID.
- 3) 1 METRE LENGTH OF WELDING ROD TO BE SUPPLIED PER MINE; ALTERNATIVELY MAY BE SUPPLIED IN RUNNING LENGTH, MAINTAINING SAME RATIO.

19-4-06	DC 37050-A	FORMAT BOX ENTRIES ADDED	SCALE: 1:1	COMP: 2/8	ITX 17 GA
18-11-51	P.C. 3215-A	SUBS. LIST OF CHANGES	EST. MARKS: -		
14-9-52		TARGET WITHOUT CHANGE			
21-1-57	D.C. 33550-A	PURE, SEALED			
R.N. DATE	AUTHORITY	REVISION	ZONE	AUSE	
DRG SEALED: 27-1-82					

**MINE, DRILL, A.T. 1A.**  
**NON DETECTABLE - EMPTY**

DESIGNER'S REF.  
**CIA/AMN/2255**  
 PART NO.  
**ITX 11 GE**  
 D.S. CAT. NO.  
 ANSP: C.I.(A)KIRKKEE