

2

DWG NO Y25683A-00

SH 1

1

SHEET REV RECORD

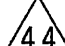
ALL SHEETS ARE THE SAME REVISION

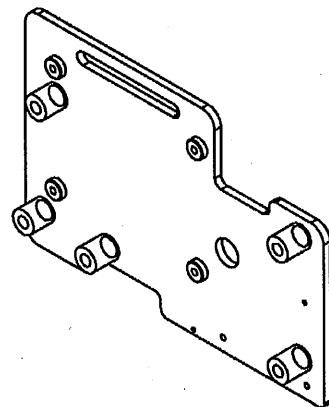
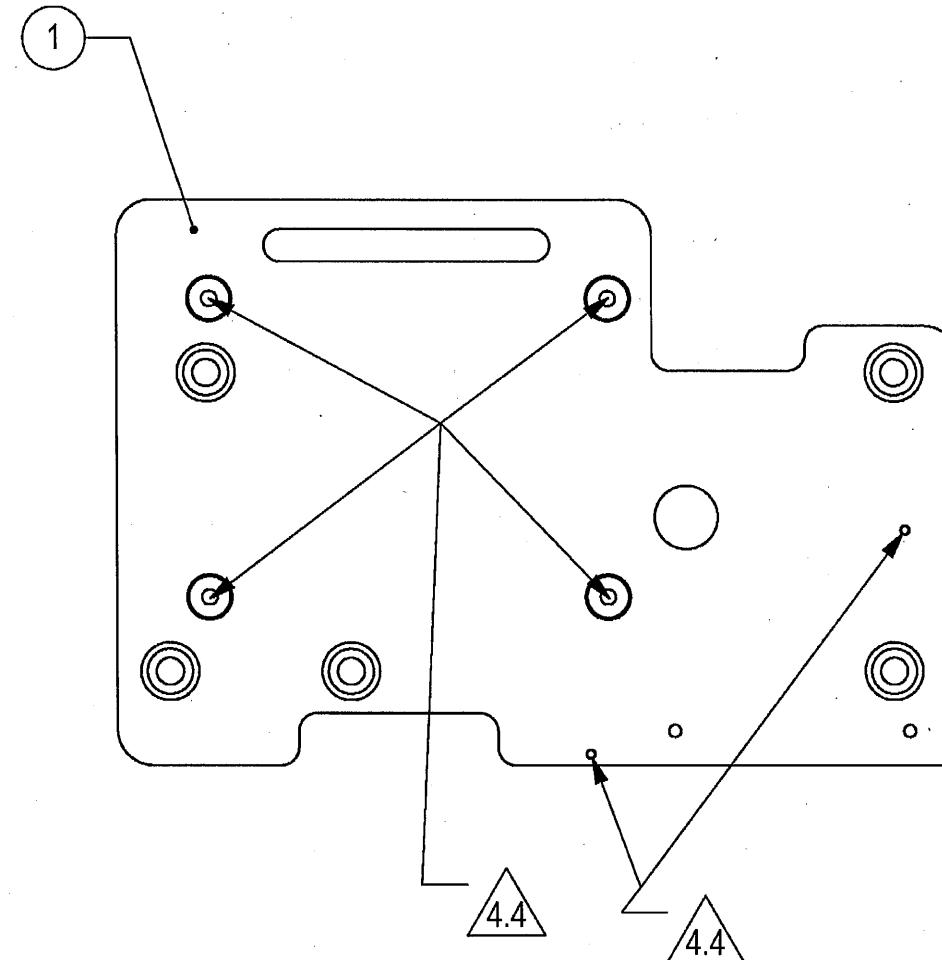
REVISION RECORD

REV	ECO	DESCRIPTION	DATE	APVD
--		Released	08-Oct-18	L. Goldshtein

THIS DOCUMENT AND THE INFORMATION CONTAINED IN IT ARE PROPRIETARY AND CONFIDENTIAL TO OFT. NO PERSON OR ENTITY IS ALLOWED TO COPY, REPRINT, REPRODUCE OR PUBLISH ANY PART OF THIS DOCUMENT, NOR DISCLOSE ITS CONTENTS TO OTHERS, NOR MAKE ANY USE OF IT, NOR ALLOW OR ASSIST OTHERS TO MAKE ANY USE OF IT UNLESS BY THE PRIOR WRITTEN EXPRESS AUTHORIZATION OF OFT AND THEN ONLY TO THE EXTENT AUTHORIZED.  
COPYRIGHT-OFT.



NOTES:

1. INTERPRET THIS DRAWING IAW ASME Y14.100M.
2. MATERIAL: STAINLESS STEEL F/N 1 (FOR REFERENCE ONLY)
3. FINISH:
  - 3.1 PASSIVATION TREATMENT per AMS-2700 METHOD 1 TYPE 7.
4. PAINT:
  - 4.1 PRIMER: LEAD AND CHROMATE FREE EPOXY PRIMER PER MIL-DTL-53022 THICKNESS: 25-40 MICRONS. OR EQUIVALENT APPROVED BY ELBIT.
  - 4.2 INTERMEDIATE: APPLY TWO LAYERS OF HIGH SOLID EPOXY POLYAMIDE PER MIL-PRF-22750 TYPE II CLASS H. EACH LAYER 30-50 MICRONS. SEAL WELDED AREA WITH MS SOUDAL 250 OR SIKAFLEX 529.
  - 4.3 TOP COAT - APPLY TWO LAYER OF ALIPHATIC POLYURETHANE PER MIL-PRF-85285 OR MIL-C-83286 RAL 9016 MATT. EACH LAYER 30-50 MICRONS.
  - 4.4  PROTECT THREADS BEFORE PAINT.
5. QUALITY ASSURANCE PROVISIONS:
  - 5.1 QUALITY ASSURANCE PROVISIONS FOR THIS ITEM PER RDMQD00012P.
6. PACKAGING AND PACKING: THE FINISHED PART SHALL BE PRESERVED AND PACKAGED IN ACCORDANCE WITH MANUFACTURER'S BEST COMMERCIAL PRACTICE.
7. IDENTIFY PER MIL-STD-130 PARA 4.1.B, BY LABELING ITS CONTAINER WITH THE PART NUMBER. CHARACTERS MINIMUM TEXT HEIGHT 1.25 MM.



(WEIGHT APPROX. : 10.7 Kg)

SEE SEPARATE PARTS LIST

UNLESS OTHERWISE SPECIFIED		SIGNATURE	DATE	 <b>ORDNANCE FACTORY</b> TIRUCHIRAPPALLI	
DIMENSIONS ARE IN MM PER ASME Y14.5 - 2009		DRAWN	21/12/20		
TOLERANCES		CHECKED		TITLE	
LINEAR	ANGULAR	HOS/DDO	21/12	ADAPTOR MAGAZINE	
1st. ANGLE PROJECTION		OFFICER/PRODN		SIZE	CAGE CODE
		OFFICER/QC		B	2291A
SURFACE TEXTURE IN MicroMeter		OFFICER/DDO	21/12/20	DWG NO	Y25683A-00
PROJECT OFFICER				SCALE	1:4
				AUTOMATED DRAWING (SW)	SHEET 1 OF 1
PLM Control A		EPDM DRAWING REV.	EPDM MODEL REV.	EPDM MODEL STATUS	EPDM MODEL NAME
					Y25683A-00

2

OFT

**ASSEMBLY PARTS LIST**

Assembly Parts List For: Y25683A-00

Rev: -

Status: Released

Description: ADAPTOR MAGAZINE

FN	CMD	PART NUM	ECO	DESCRIPTION	MB	QTY	U/M	REF. DES./REMARKS	MFG. PN / CUSTOMER	LA	LI
1	AM	Y18768A-00		ADAPTOR, PLATE, WELD	M	1	Each				

2

DWG NO Y18768A-00

SH 1

1

SHEET REV RECORD

ALL SHEETS ARE THE SAME REVISION

REVISION RECORD

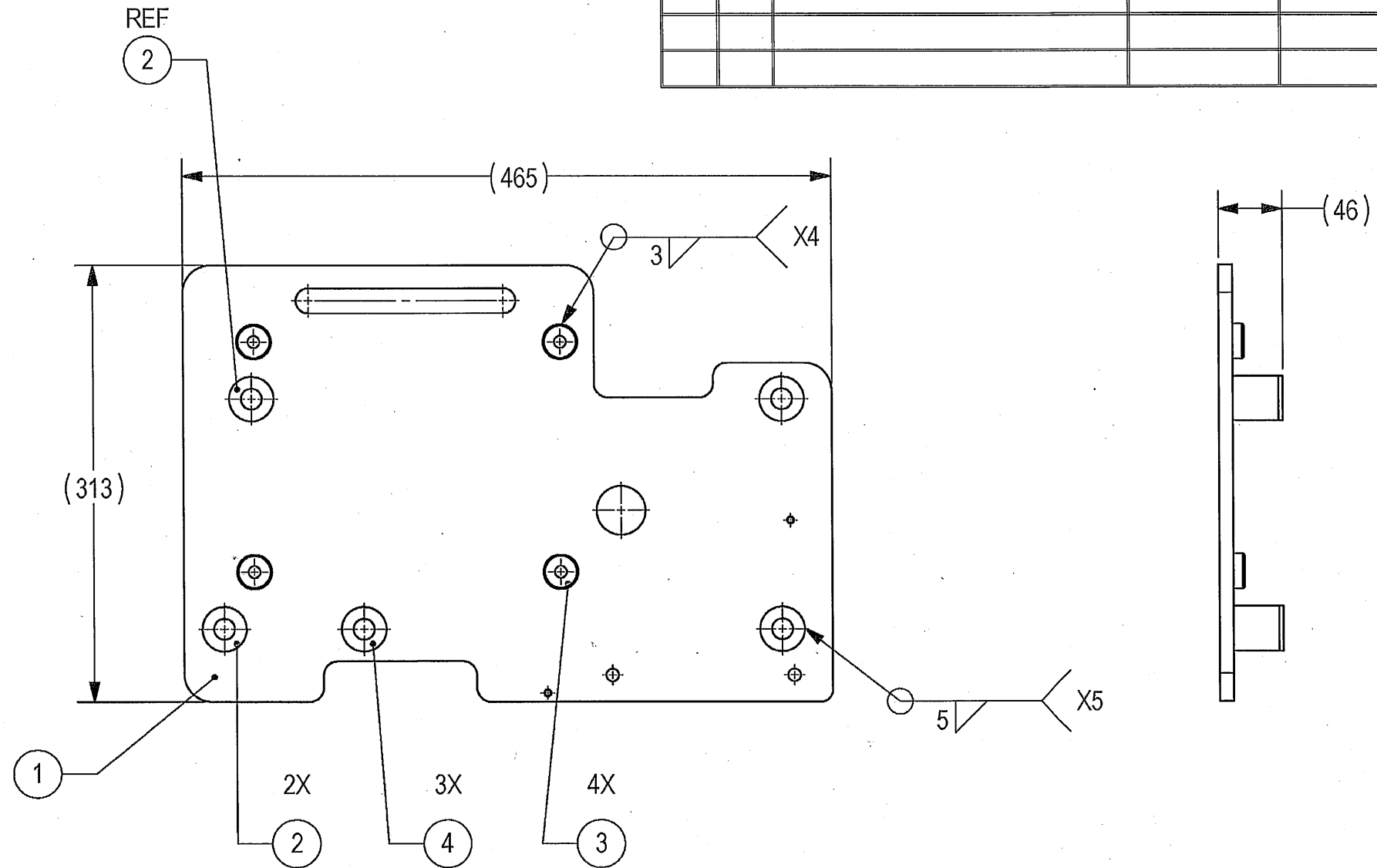
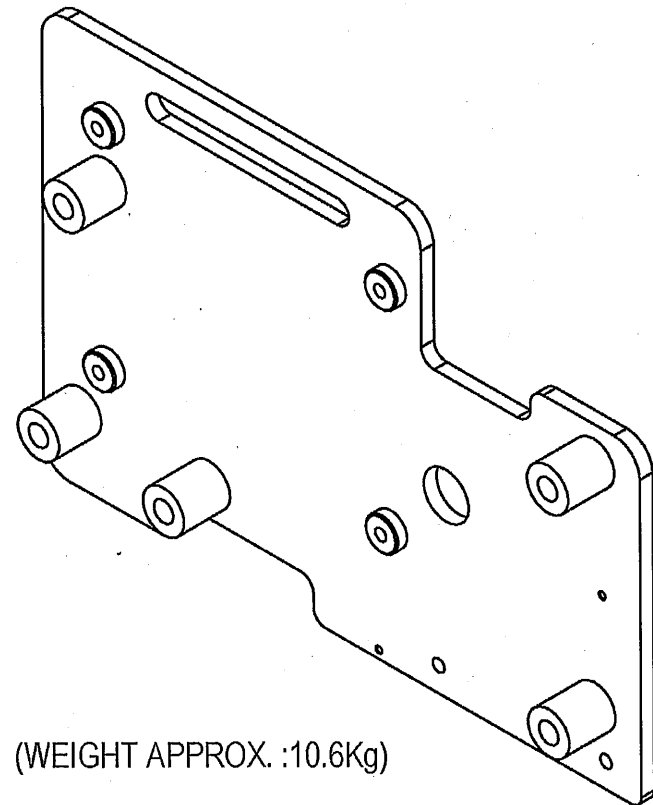
REV	ECO	DESCRIPTION	DATE	APVD
01		Freeze	03-Oct-17	Y. Shapira
--	T00119	Identical To Previous Released	20-Sep-18	L. Goldshtein

THIS DOCUMENT AND THE INFORMATION CONTAINED IN IT ARE PROPRIETARY AND CONFIDENTIAL TO OFT. NO PERSON OR ENTITY IS ALLOWED TO COPY, REPRINT, REPRODUCE OR PUBLISH ANY PART OF THIS DOCUMENT, NOR DISCLOSE ITS CONTENTS TO OTHERS, NOR MAKE ANY USE OF IT, NOR ALLOW OR ASSIST OTHERS TO MAKE ANY USE OF IT UNLESS BY THE PRIOR WRITTEN EXPRESS AUTHORIZATION OF OFT AND THEN ONLY TO THE EXTENT AUTHORIZED.  
COPYRIGHT-OFT.

NOTES

1. INTERPRET THIS DRAWING IAW ASME Y14.100M.
2. MATERIAL: STAINLESS STEEL - (FOR REFERENCE ONLY)
3. WELDING:
  - 3.1 WELDING PER AWS D1.1 GTAW OR GMAW CLASS C USING ELECTRODE ER308L PER AWS A5.9 OR EQUIVALENT.
  - 3.2 AFTER WELDING APPLY VISUAL INSPECTION PER ASTM E 1417 TYPE I LEVEL 3.
4. DEBURR AND REMOVE SHARP EDGES, APPROX. 0.2X45 Deg.
5. QUALITY ASSURANCE PROVISIONS:
  - 5.1 QUALITY ASSURANCE PROVISIONS FOR THIS ITEM PER RDMQD00012P.
6. GENERAL TOLERANCES ACCORDING TO TO ISO 13920-A.
7. PARENTHETICAL FIGURES ARE FOR REFERENCE ONLY.
8. PACKAGING AND PACKING:
 

THE FINISHED PART SHALL BE PRESERVED AND PACKAGED IN ACCORDANCE WITH MANUFACTURER'S BEST COMMERCIAL PRACTICE.
9. IDENTIFY PER MIL-STD-130 PARA 4.1.B, BY LABELING ITS CONTAINER WITH THE PART NUMBER. CHARACTERS MINIMUM TEXT HEIGHT 1.25 MM.



SEE ATTACHED MEDIA  
SEE SEPARATE PARTS LIST

UNLESS OTHERWISE SPECIFIED		SIGNATURE	DATE	<b>ORDNANCE FACTORY</b> TIRUCHIRAPPALLI	
DIMENSIONS ARE IN MM PER ASME Y14.5 - 2009		DRAWN	21/12/20		
TOLERANCES		CHECKED		TITLE	
LINEAR	ANGULAR	HOS/DDO	21/12/20	FOR: ADAPTOR MAGAZINE	
SEE NOTE 6.	SEE NOTE 6.	OFFICER/PRODN		ADAPTOR, PLATE, WELD	
1st. ANGLE PROJECTION		OFFICER/QC		SIZE	CAGE CODE
		OFFICER/DDO		B	2291A
SURFACE TEXTURE IN MicroMeter		PROJECT OFFICER		DWG NO	Y18768A-00
				SCALE	1:4
				AUTOMATED DRAWING (SW)	SHEET 1 OF 1
				PLM Control	06 05 Freeze Y18768A-00

OFT

ASSEMBLY PARTS LIST

Assembly Parts List For: Y18768A-00

Rev: -

Status: Released

Description: ADAPTOR, PLATE, WELD

FN	CMD	PART NUM	ECO	DESCRIPTION	MB	QTY	U/M	REF. DES./REMARKS	MFG. PN / CUSTOMER	LA	LI
1	MP	Y18769A-00		PLATE, MAGAZINE	M	1	Each				
2	MP	Y18882A-00		SPACER, PLATE, SHORT	M	2	Each				
3	MP	Y18935A-00		BOSS, M10, PLATE	M	4	Each				
4	MP	Y18885A-00		SPACER, PLATE, LONG	M	3	Each				

2

DWG NO Y18769A-00

SH 1

1

SHEET REV RECORD

ALL SHEETS ARE THE SAME REVISION

REVISION RECORD

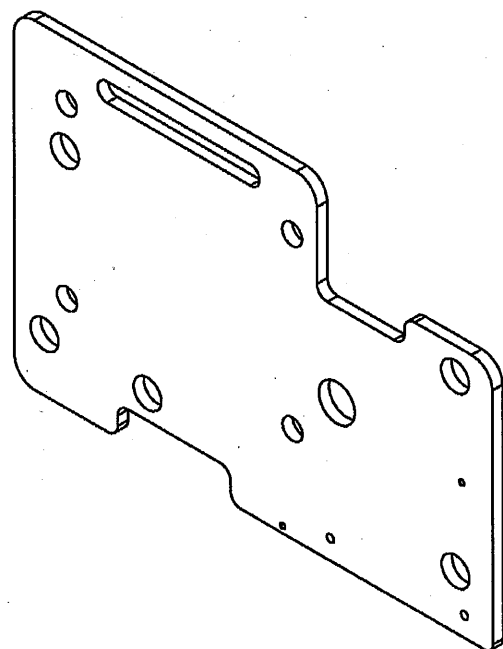
REV	ECO	DESCRIPTION	DATE	APVD
01		Freeze	03-Oct-17	Y. Shapira
--	T00063	Identical To Previous Released	08-Apr-18	L. Goldshtein

THIS DOCUMENT AND THE INFORMATION CONTAINED IN IT ARE PROPRIETARY AND CONFIDENTIAL TO OFT. NO PERSON OR ENTITY IS ALLOWED TO COPY, REPRINT, REPRODUCE OR PUBLISH ANY PART OF THIS DOCUMENT, NOR DISCLOSE ITS CONTENTS TO OTHERS, NOR MAKE ANY USE OF IT, NOR ALLOW OR ASSIST OTHERS TO MAKE ANY USE OF IT UNLESS BY THE PRIOR WRITTEN EXPRESS AUTHORIZATION OF OFT AND THEN ONLY TO THE EXTENT AUTHORIZED. COPYRIGHT-OFT.

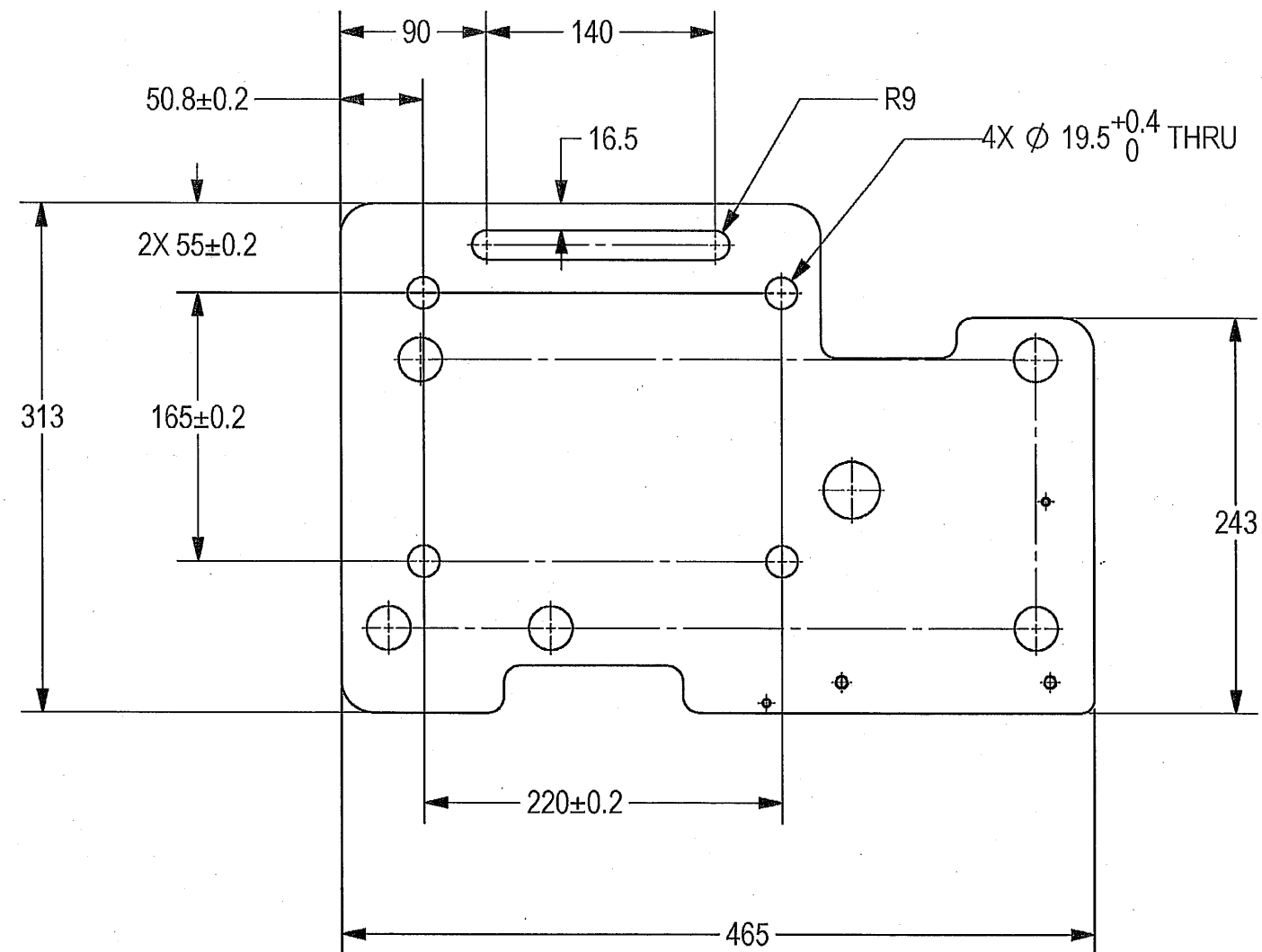
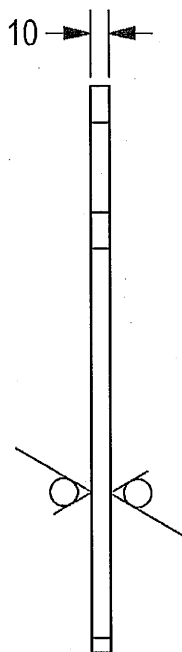
NOTES

- INTERPRET THIS DRAWING IAW ASME Y14.100M.
- MATERIAL: CRES SHEET THICK 10 MM TYPE 316L per ASTM-A-240 (EQUIVALENT STEEL IS PERMITTED AFTER ELBIT APPROVAL).
- GENERAL TOLERANCES ACCORDING TO ISO 2768-m.
- QUALITY ASSURANCE PROVISIONS:
  - 4.1 QUALITY ASSURANCE PROVISIONS FOR THIS ITEM PER RDMQD00012P.
- DEBURR AND REMOVE SHARP EDGES, APPROX. 0.2X45 Deg.
- PARENTHETICAL FIGURES ARE FOR REFERENCE ONLY.
- PACKAGING AND PACKING:
 

THE FINISHED PART SHALL BE PRESERVED AND PACKAGED IN ACCORDANCE WITH MANUFACTURER'S BEST COMMERCIAL PRACTICE.
- IDENTIFY PER MIL-STD-130 PARA 4.1.B, BY LABELING ITS CONTAINER WITH THE PART NUMBER. CHARACTERS MINIMUM TEXT HEIGHT 1.25 MM.



(WEIGHT APPROX. :9.6Kg)



UNLESS OTHERWISE SPECIFIED		SIGNATURE	DATE	 <b>ORDNANCE FACTORY</b> <b>TIRUCHIRAPPALLI</b>	
DIMENSIONS ARE IN MM PER ASME Y14.5 - 2009		DRAWN	21/12/20		
TOLERANCES		CHECKED		TITLE	
LINEAR	ANGULAR	HOS/DDO	21/12/20	FOR: ADAPTOR MAGAZINE	
SEE NOTE 3.	SEE NOTE 3.	OFFICER/PRODN		OF: 12.7MM SRCG	
1st ANGLE PROJECTION		OFFICER/QC		SIZE	CAGE CODE
		OFFICER/DDO	21/12/20	B	2291A
SURFACE TEXTURE IN MicroMeter				DWG NO	Y18769A-00
				SCALE	1:5
PROJECT OFFICER				AUTOMATED DRAWING (SW)	SHEET 1 OF 2
PLM Control 04		EPDM DRAWING REV	02	EPDM MODEL REV	Freeze
		EPDM MODEL STATUS	Freeze	EPDM MODEL NAME	Y18769A-00

2

2



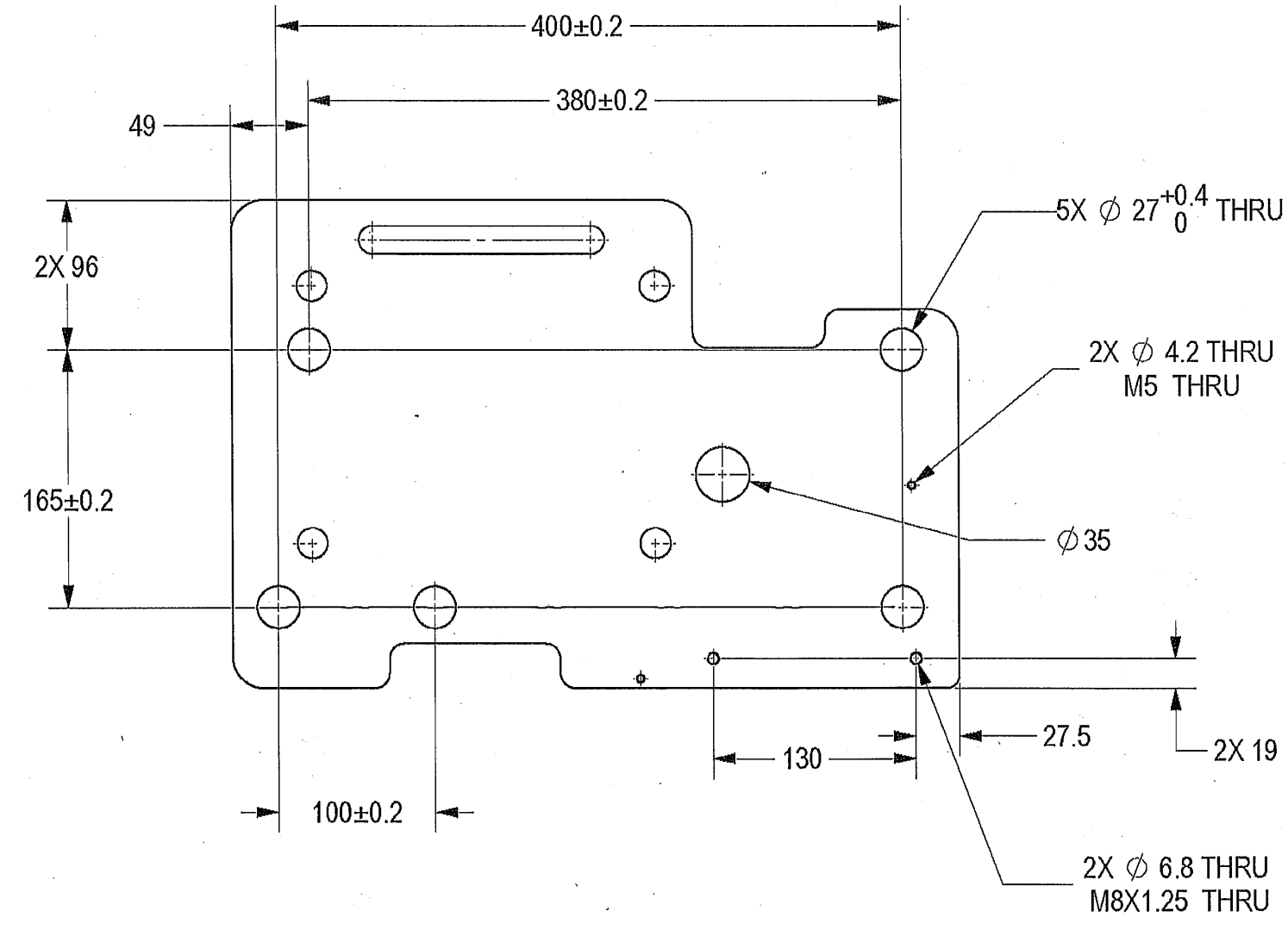
DWGNO Y18769A-00

SH 2

1

B

B



A

A

SIZE <b>B</b>	CAGE CODE 2291A	DWGNO Y18769A-00	-
SCALE 1:5	AUTOMATED DRAWING (SW)		SHEET 2 OF 2

2



PLM Control

1

2

DWG NO Y18882A-00

SH 1

1

SHEET REV RECORD

ALL SHEETS ARE THE SAME REVISION

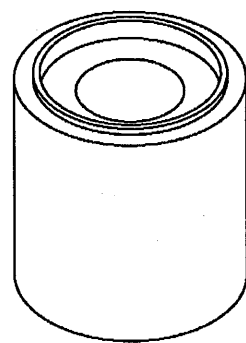
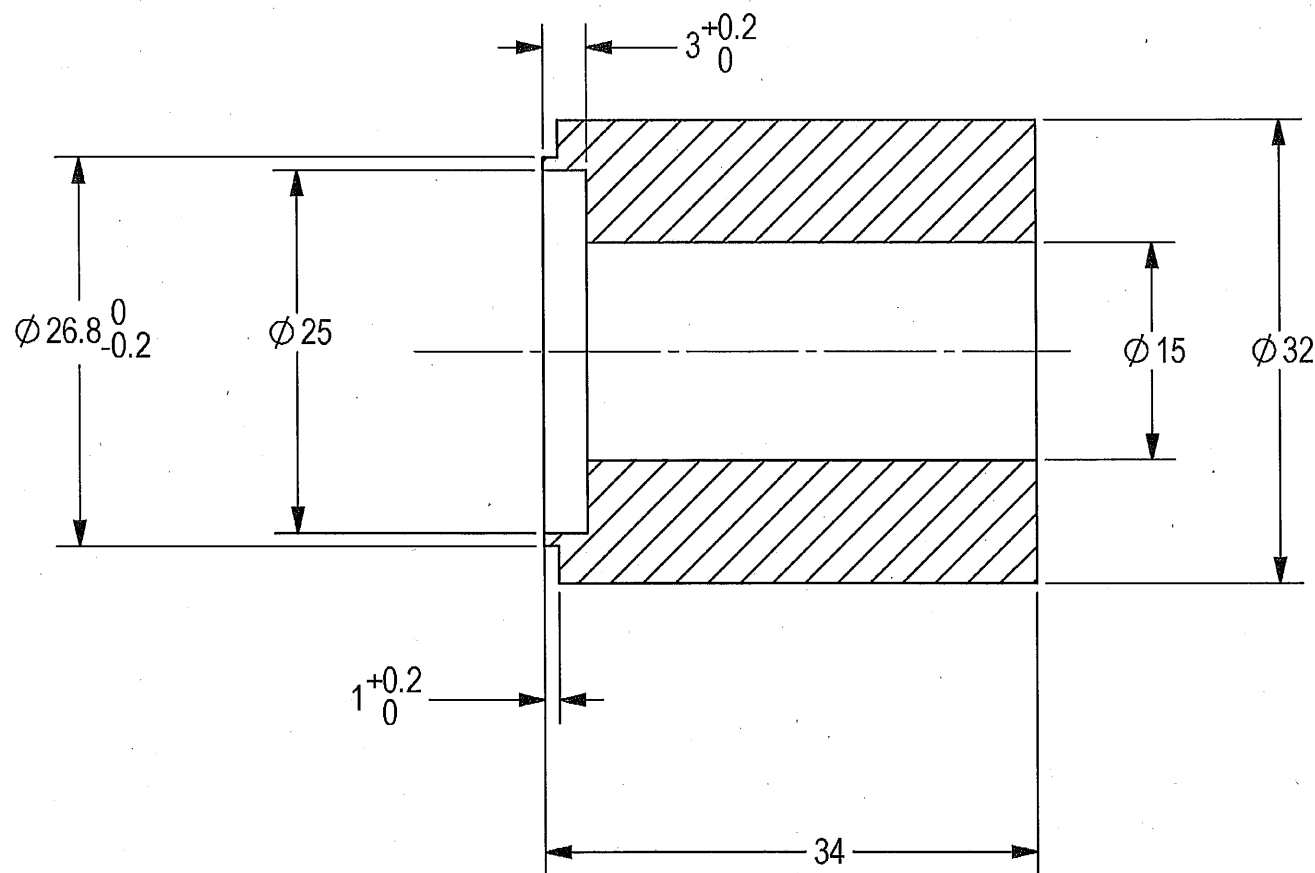
REVISION RECORD

REV	ECO	DESCRIPTION	DATE	APVD
01		Freeze	03-Oct-17	Y. Shapira
--	T00119	Identical To Previous Released	20-Sep-18	L. Goldshtein

THIS DOCUMENT AND THE INFORMATION CONTAINED IN IT ARE PROPRIETARY AND CONFIDENTIAL TO OFT. NO PERSON OR ENTITY IS ALLOWED TO COPY, REPRINT, REPRODUCE OR PUBLISH ANY PART OF THIS DOCUMENT, NOR DISCLOSE ITS CONTENTS TO OTHERS, NOR MAKE ANY USE OF IT, NOR ALLOW OR ASSIST OTHERS TO MAKE ANY USE OF IT UNLESS BY THE PRIOR WRITTEN EXPRESS AUTHORIZATION OF OFT AND THEN ONLY TO THE EXTENT AUTHORIZED. COPYRIGHT-OFT.

NOTES:

1. INTERPRET THIS DRAWING IAW ASME Y14.100M.
2. MATERIAL: CRES BAR TYPE 316L PER ASTM-A-276. (EQUIVALENT MATERIAL IS PERMITTED AFTER ELBIT APPROVAL)
3. UNLESS OTHERWISE SPECIFIED, UNDEFINED MACHINED FILLET MAX RADII SHALL BE 0.3.
4. DEBURR AND REMOVE SHARP EDGES, APPROX. 0.2X45 Deg.
5. GENERAL TOLERANCES ACCORDING TO ISO 2768-m.
6. PACKAGING AND PACKING: THE FINISHED PART SHALL BE PRESERVED AND PACKAGED IN ACCORDANCE WITH MANUFACTURER'S BEST COMMERCIAL PRACTICE.
7. IDENTIFY PER MIL-STD-130 PARA 4.1.B, BY LABELING ITS CONTAINER WITH THE PART NUMBER. CHARACTERS MINIMUM TEXT HEIGHT 1.25 MM.



(WEIGHT APPROX. :0.2Kg)

SEE ATTACHED MEDIA

UNLESS OTHERWISE SPECIFIED		SIGNATURE	DATE	<b>ORDNANCE FACTORY</b> TIRUCHIRAPPALLI	
DIMENSIONS ARE IN MM PER ASME Y14.5 - 2009		DRAWN	21.12.20		
TOLERANCES		CHECKED		TITLE	
LINEAR	ANGULAR	HOS/DDO	21/12/20	SPACER, PLATE, SHORT	
SEE NOTE 5.	SEE NOTE 5.	OFFICER/PRODN		FOR: ADAPTOR, PLATE, WELD	
1st. ANGLE PROJECTION		OFFICER/QC		OF: 12.7MM SRCG	
		OFFICER/DDO	21/12/20	SIZE	CAGE CODE
SURFACE TEXTURE IN MicroMeter				B	2291A
PROJECT OFFICER				DWG NO	Y18882A-00
				SCALE	2:1
				AUTOMATED DRAWING (SW)	SHEET 1 OF 1
				PLM Control	05 05 Freeze Y18882A-00

2

2

DWG NO Y18935A-00

SH 1

1

SHEET REV RECORD

ALL SHEETS ARE THE SAME REVISION

REVISION RECORD

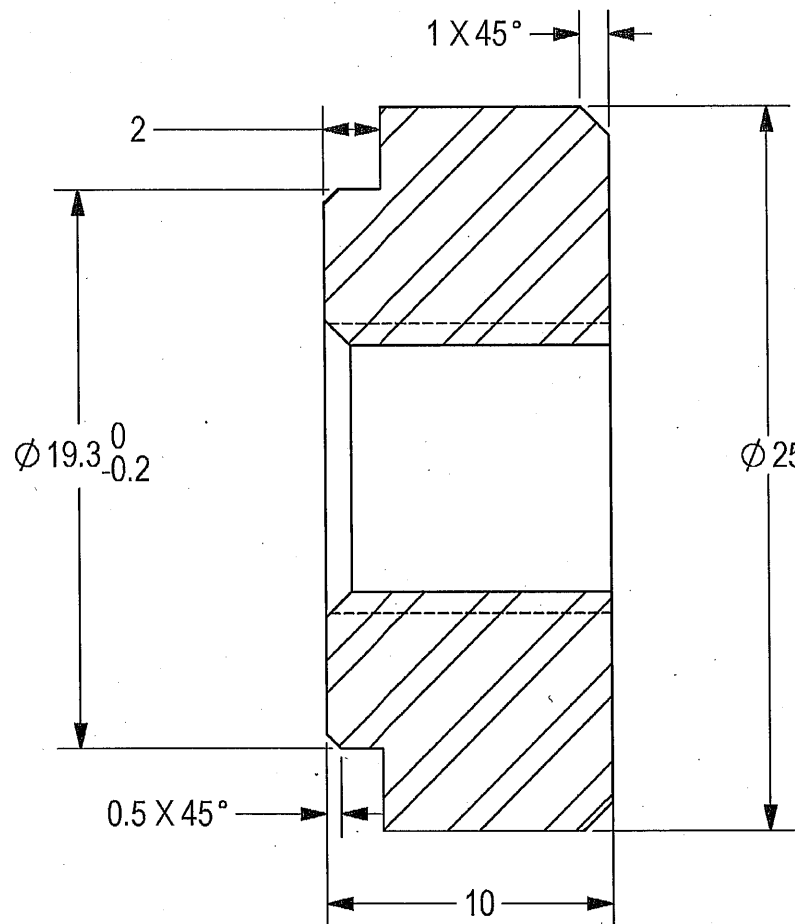
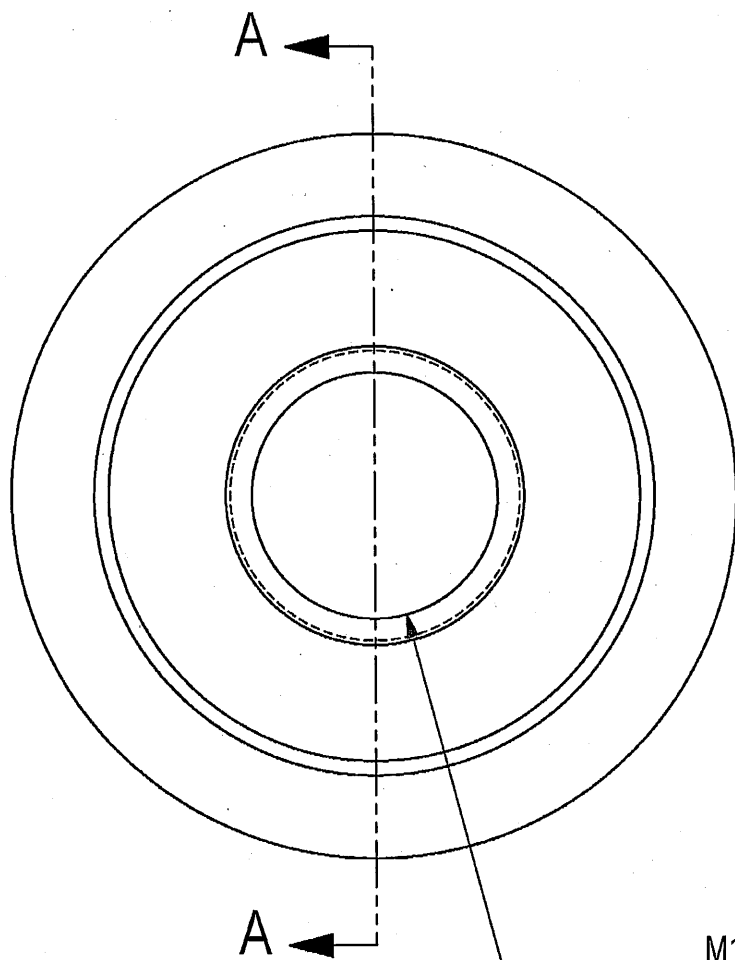
REV	ECO	DESCRIPTION	DATE	APVD
01		Freeze	02-Oct-17	E. Reshef
--	T00063	Identical To Previous Released	08-Apr-18	L. Goldshtein

THIS DOCUMENT AND THE INFORMATION CONTAINED IN IT ARE PROPRIETARY AND CONFIDENTIAL TO OFT. NO PERSON OR ENTITY IS ALLOWED TO COPY, REPRINT, REPRODUCE OR PUBLISH ANY PART OF THIS DOCUMENT, NOR DISCLOSE ITS CONTENTS TO OTHERS, NOR MAKE ANY USE OF IT, NOR ALLOW OR ASSIST OTHERS TO MAKE ANY USE OF IT UNLESS BY THE PRIOR WRITTEN EXPRESS AUTHORIZATION OF OFT AND THEN ONLY TO THE EXTENT AUTHORIZED. COPYRIGHT-OFT.

NOTES:

1. INTERPRET THIS DRAWING IAW ASME Y14.100M.
2. MATERIAL: CRÉS BAR TYPE 316L PER ASTM-A-276. (EQUIVALENT MATERIAL IS PERMITTED AFTER ELBIT APPROVAL)
3. UNLESS OTHERWISE SPECIFIED, UNDEFINED MACHINED FILLET MAX RADII SHALL BE 0.3.
4. DEBURR AND REMOVE SHARP EDGES, APPROX. 0.2X45 Deg.
5. GENERAL TOLERANCES ACCORDING TO ISO 2768-m.
6. PACKAGING AND PACKING: THE FINISHED PART SHALL BE PRESERVED AND PACKAGED IN ACCORDANCE WITH MANUFACTURER'S BEST COMMERCIAL PRACTICE.
7. IDENTIFY PER MIL-STD-130 PARA 4.1.B, BY LABELING ITS CONTAINER WITH THE PART NUMBER. CHARACTERS MINIMUM TEXT HEIGHT 1.25 MM.

B



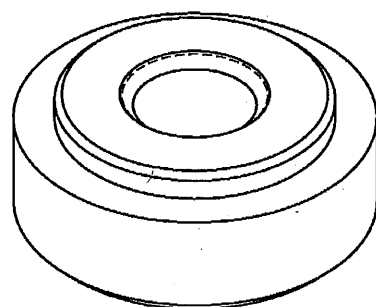
B

M10X1.5 THRU  
 $\checkmark$   $\phi$  10.3 X 90°, NEAR SIDE

SECTION A-A

SEE ATTACHED MEDIA

A



(WEIGHT APPROX. :31g)

A

UNLESS OTHERWISE SPECIFIED		SIGNATURE	DATE		
DIMENSIONS ARE IN MM PER ASME Y14.5 - 2009		DRAWN	21/12/20		
TOLERANCES		CHECKED		TITLE	
LINEAR	ANGULAR	HOS/DDO	21/12/20	BOSS, M10, PLATE	
SEE NOTE 5.	SEE NOTE 5.	OFFICER/PRODN		FOR: ADAPTOR, PLATE, WELD	
1st. ANGLE PROJECTION		OFFICER/OC		OF: 12.7MM SRCG	
		OFFICER/DDO	21/12/20	SIZE	CAGE CODE
SURFACE TEXTURE IN MicroMeter				B	2291A
				DWG NO	Y18935A-00
				SCALE	4:1
				AUTOMATED DRAWING (SW)	SHEET 1 OF 1

*Imme*

2

PLM Control 01 01 Freeze Y18935A-00



2

DWG NO Y18885A-00

SH 1

1

SHEET REV RECORD

ALL SHEETS ARE THE SAME REVISION

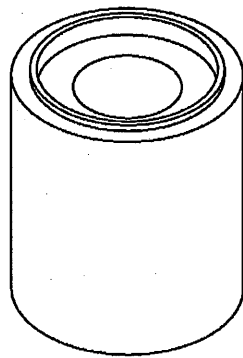
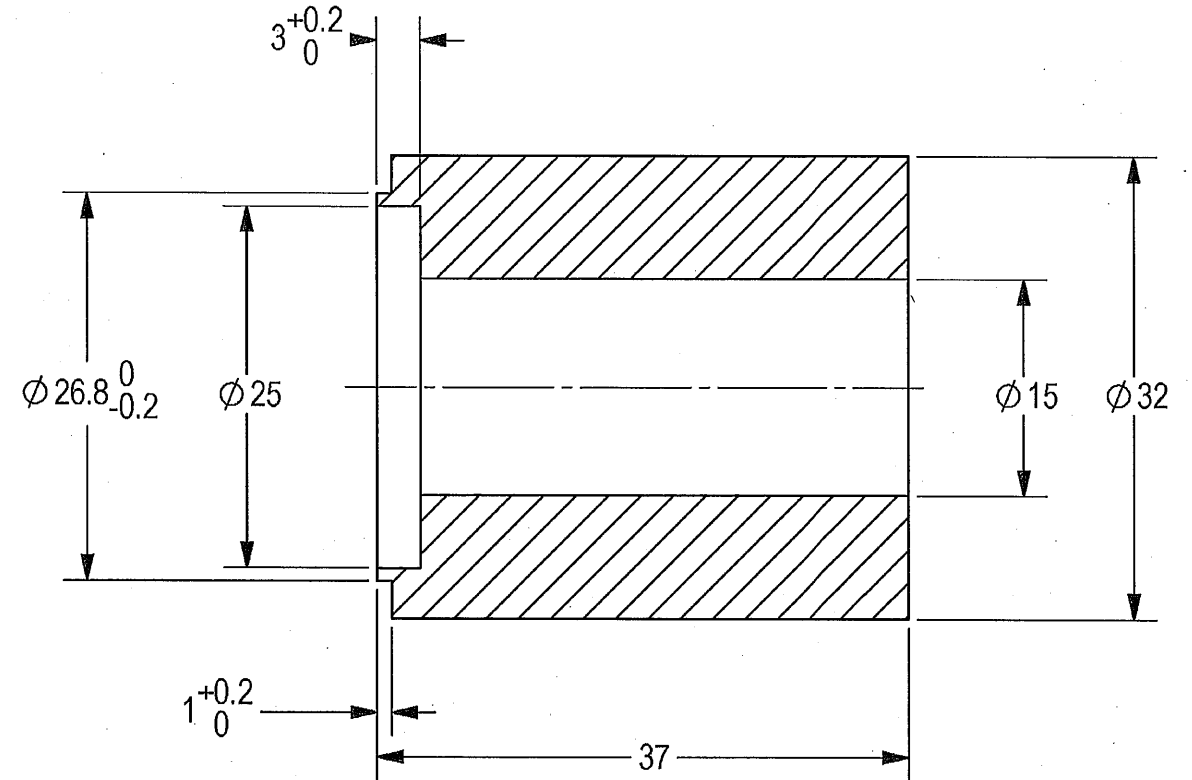
REVISION RECORD

REV	ECO	DESCRIPTION	DATE	APVD
01		Freeze	03-Oct-17	Y. Shapira
--	T00063	Identical To Previous Released	08-Apr-18	L. Goldshtein

THIS DOCUMENT AND THE INFORMATION CONTAINED IN IT ARE PROPRIETARY AND CONFIDENTIAL TO OFT. NO PERSON OR ENTITY IS ALLOWED TO COPY, REPRINT, REPRODUCE OR PUBLISH ANY PART OF THIS DOCUMENT, NOR DISCLOSE ITS CONTENTS TO OTHERS, NOR MAKE ANY USE OF IT, NOR ALLOW OR ASSIST OTHERS TO MAKE ANY USE OF IT UNLESS BY THE PRIOR WRITTEN EXPRESS AUTHORIZATION OF OFT AND THEN ONLY TO THE EXTENT AUTHORIZED. COPYRIGHT-OFT.


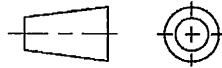
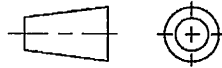
NOTES:

1. INTERPRET THIS DRAWING IAW ASME Y14.100M.
2. MATERIAL: CRES BAR TYPE 316L PER ASTM-A-276. (EQUIVALENT MATERIAL IS PERMITTED AFTER ELBIT APPROVAL)
3. UNLESS OTHERWISE SPECIFIED, UNDEFINED MACHINED FILLET MAX RADII SHALL BE 0.3.
4. DEBURR AND REMOVE SHARP EDGES, APPROX. 0.2X45 Deg.
5. GENERAL TOLERANCES ACCORDING TO ISO 2768-m.
6. PACKAGING AND PACKING: THE FINISHED PART SHALL BE PRESERVED AND PACKAGED IN ACCORDANCE WITH MANUFACTURER'S BEST COMMERCIAL PRACTICE.
7. IDENTIFY PER MIL-STD-130 PARA 4.1.B, BY LABELING ITS CONTAINER WITH THE PART NUMBER. CHARACTERS MINIMUM TEXT HEIGHT 1.25 MM.



(WEIGHT APPROX. :0.2Kg)

SEE ATTACHED MEDIA

UNLESS OTHERWISE SPECIFIED		SIGNATURE	DATE	 <b>ORDNANCE FACTORY</b> TIRUCHIRAPPALLI	
DIMENSIONS ARE IN MM PER ASME Y14.5 - 2009		DRAWN	2/1/21		
TOLERANCES		CHECKED		TITLE	
LINEAR	ANGULAR	HOS/DDO	2/1/21	SPACER, PLATE, LONG	
SEE NOTE 5.	SEE NOTE 5.	OFFICER/PRODN		FOR: ADAPTOR, PLATE, WELD	OF: 12.7MM SRCG
1st ANGLE PROJECTION		OFFICER/QC		SIZE	CAGE CODE
		OFFICER/DDO	4/1/21	B	2291A
SURFACE TEXTURE IN MicroMeter				DWG NO	Y18885A-00
				SCALE	2:1
PROJECT OFFICER				AUTOMATED DRAWING (SW)	
				SHEET 1 OF 1	
PLM Control 04		EPDM DRAWING REV	04	EPDM MODEL REV	04
				EPDM MODEL STATUS	Freeze
				EPDM MODEL NAME	Y18885A-00