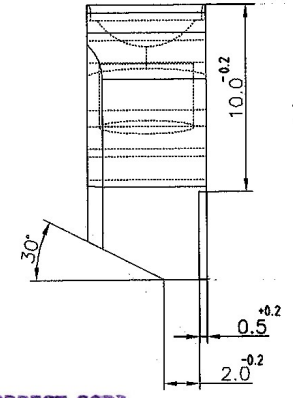
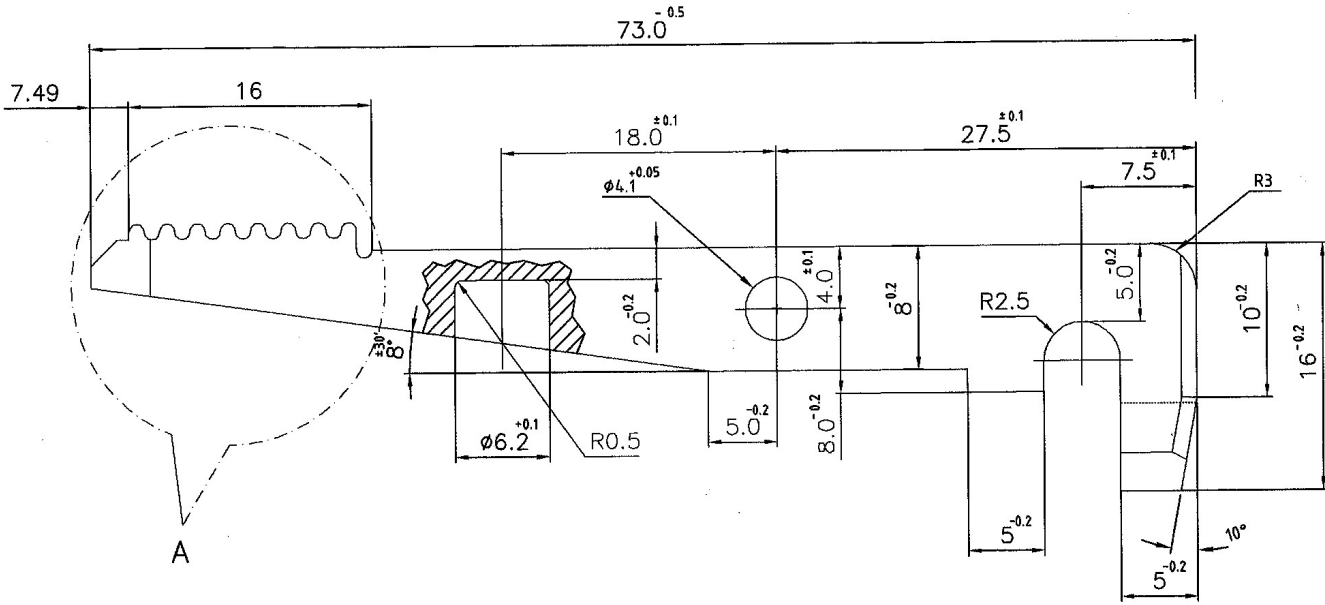


DIMENSIONS ARE IN mm.  
 UNTOLERATED DIMNS. AS PER IS : 2102 (MED)  
 SHARP CORNERS SHOULD BE BLUNT TO R 0.2  
 PROTECTIVE FINISH : PHOSPATED TO SPECIFICATION.  
 JSS : 0465-01-1988, CLASS-I (ACCELERATED) OIL FINISH.



CERTIFIED CORRECT COPY  
 OF APPROVED DRAWINGS  
 AT THIS DATE.....

30.11.2020

Design & Drawing Office  
 Ordnance Factory,  
 Tiruchirappalli-620016

UN CONTROLLED COPY

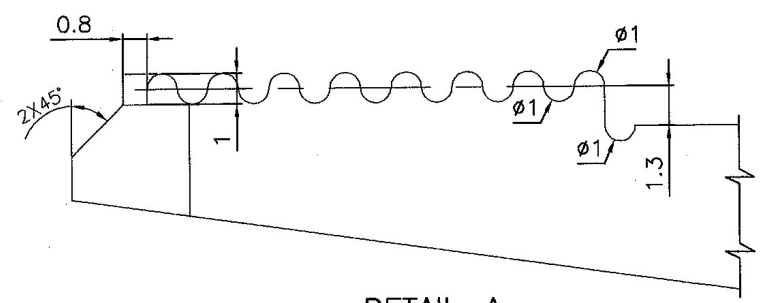
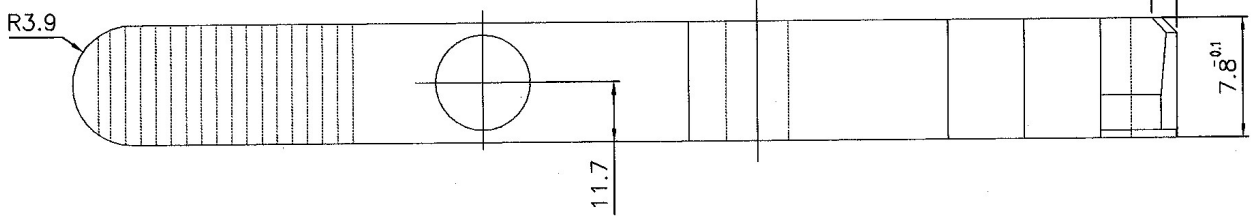
MATL : EN19, HARDNESS: 260-300 HB.

ALT. MATERIAL : BS 970 Gr. 709  
 M 40.

HARDNESS: RC 32 - 38

DRG. PROVISIONAL

⊕ (OR) ALT. MATL : IS: 5517-1993 DESIGN. 42 Cr 4 Mo 2-LRS-30



DETAIL-A

NOTE:-

RELATIVE POSITIONS OF GROOVES ARE OPTIONAL, AS THERE IS NO FUNCTIONAL RELATION BETWEEN THEM.

PART NO.	DESCRIPTIONS	NO OFF	MATERIAL	TREATMENT	REMARKS
	SIGNATURE & DATE.				SCALE N.T.S
TRACED	<i>[Signature]</i>				STORE DRG.NO.
DRAWN	<i>[Signature]</i>				OPERATION NO.
CHECKED	<i>[Signature]</i>				
OIC/D&DO	<i>[Signature]</i>				
OFFICER/PRD.N.					
OFFICER/D&DO					
AMENDMENTS	SIG. & DATE	APPROVED ON.	SUB: MAGAZINE CATCH FOR: RECEIVER ASSY OF: 14.5/20 mm AMR		
DA-NO 006/07	4/10/07	23/11/07	DES. REF. NO.		
DA-NO-07/19	28-5-19		DRG. No.: 44P 04004*		
SI. No-2			ORDNANCE FACTORY TIRUCHIRAPPALLI-16.		
			SHEETS: 1		
			SHEET No.: 1		