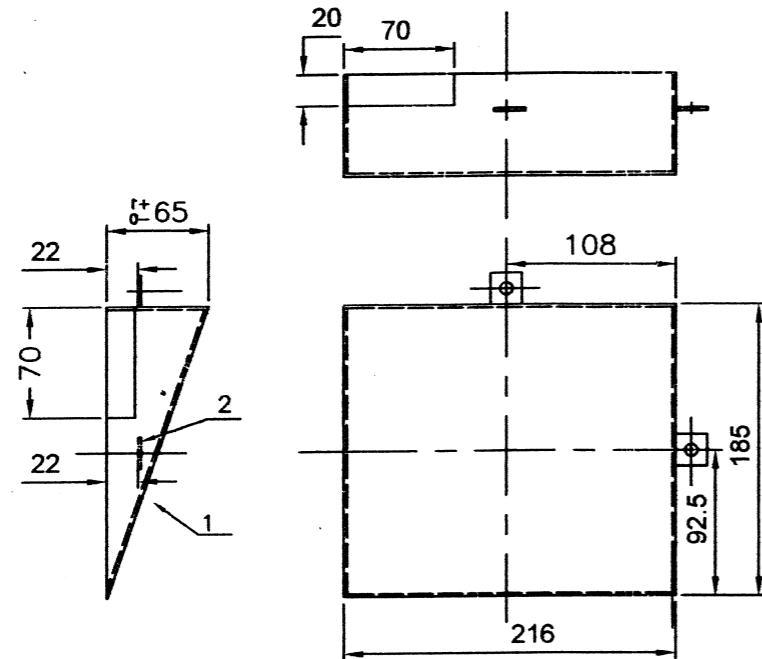


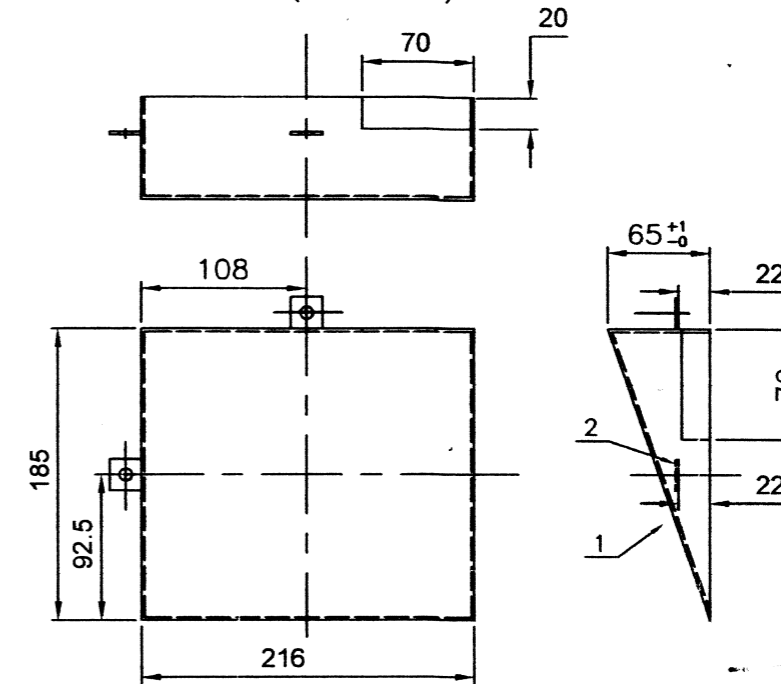
COVER ASSY.-R.H.S

QTY/VEH : 1 No.
 MATERIAL:
 ST34-IS:1079 (2mm THICK)

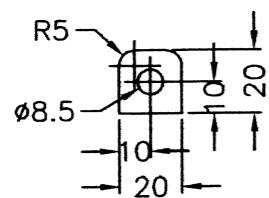


COVER ASSY.- L.H.S.

QTY/VEH : 1 No.
 MATERIAL:
 ST34-IS:1079 (2mm THICK)



STRIP DETAILS



②

QTY/ASSY: 2 NOS.
 MATERIAL:
 ST34-IS:1079 (3mm THICK)

NOTE:

1. ALL DIMENSIONS ARE IN MM.
2. UNSPECIFIED LIMIT DEVIATIONS ARE ± 1 mm.
3. ALL CORNERS RADIUS IS R2.
4. BEND THE PART NO. 1. AS SHOWN IN THE SKETCH.
5. WELD THE PART NO.2 ON ASSY. AS SHOWN IN THE SKETCH.
6. WELD THE ASSY AFTER BENDING AND GROUND PROPERLY.
7. TO BE CLEANED PRIMER COATING & FINALLY O.G. PAINT
8. BENDING OF THE PLATE IS TO BE MADE 50% OF THE PLATES OT SUIT FOR L.H.S. COMPONENT AND 50% OF THE PLATES TO SUIT FOR R.H.S. COMPONENT BY CHANGE ITS BENDING DIRECTION

ITEM	DESCRIPTION	NO.OFF	MAT.	STD.	SIZE/WT	REMARKS
						JWM/VDO WM/PS
						U.K.KHARE DRN. CKD APPD.
INDEX	ALTERATION	DATE	SIGN.			
DIM.	TOL.					
0-30	± 0.1					
30-250	± 0.2					
250-800	± 0.3					
800-2000	± 0.5					
>2000	± 0.8					
	GEN.TOL.					
	VDO					

APPROVED BY	
JWM/S.A.	DGMVA

**COVER ASSY
 (HEAD LAMP COVER
 REAR SIDE) LHS/RHS
 ASSY- MPV /ARMY**

REF.DRG.NO.	SCALE
M/C	DATE
REF.DEMAND NO.	1/1 SHTS
HULL/MPV/113	DRG.NO.

Superseded by no. E10-06-2018-1/c.
 vide